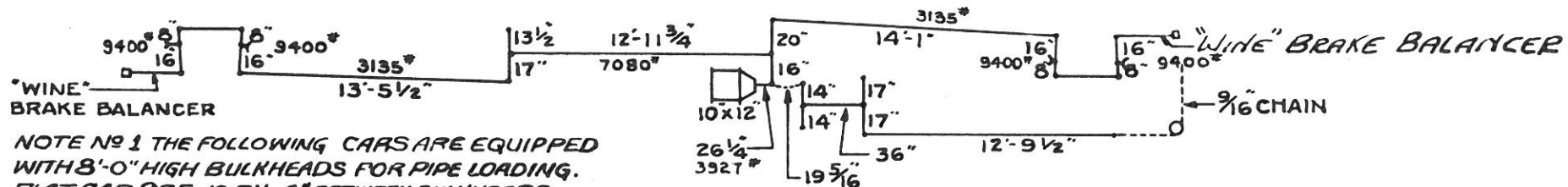
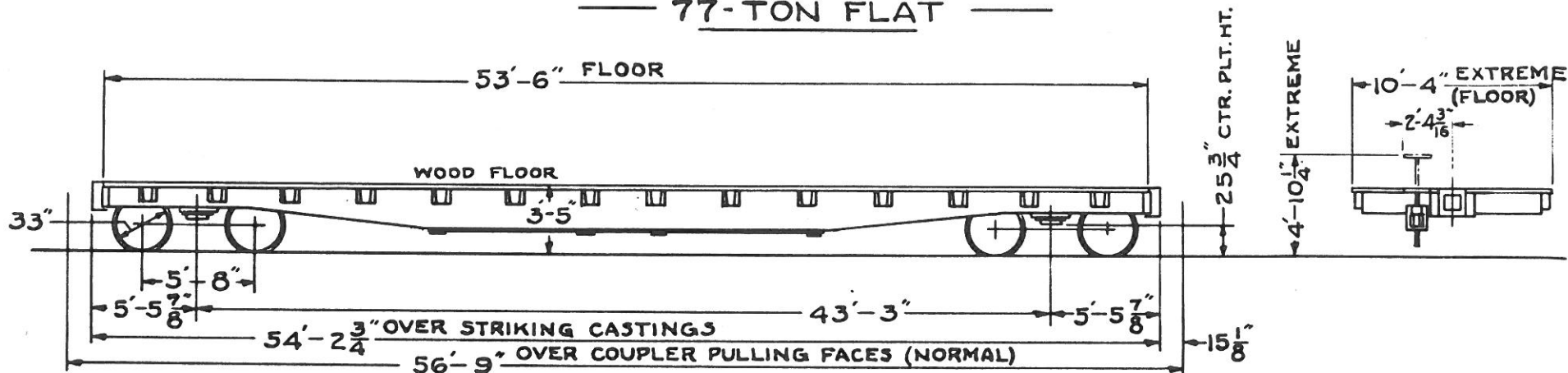


— 77-TON FLAT —



NOTE NO 1 THE FOLLOWING CARS ARE EQUIPPED WITH 8'-0" HIGH BULKHEADS FOR PIPE LOADING.
 FLAT CAR 905 IS 51'-4" BETWEEN BULKHEADS
 " " 928 IS 50'-6" " "
 " " 940 IS 50'-6" " "
 " " 946 IS 50'-6" " "

BRAKE DIAGRAM

GENERAL
 BUILDER:- GREENVILLE STEEL CAR CO.
 YEAR BUILT:- 1942
 BUILDER'S REF:- 00-362.
 A.A.R. CLASS:- FM. OR FMS
 NO. BUILT :- 50
 R.R. SPEC. NO. III
 AVERAGE LT. WT. - 60400
 " LOAD LIMIT :- 159600

END SILL:- 12" 20.7 LBS. L
 FLOORING:- 2 3/8"
 GENERAL DRAWING:- 18254 DT&I V-1875
 HAND BRAKE:- "EQUIPCO" DROP SHAFT
 SIDE SILL:- BUILT-UP.
 SIDE BEARING CENTERS:- 4'-2"

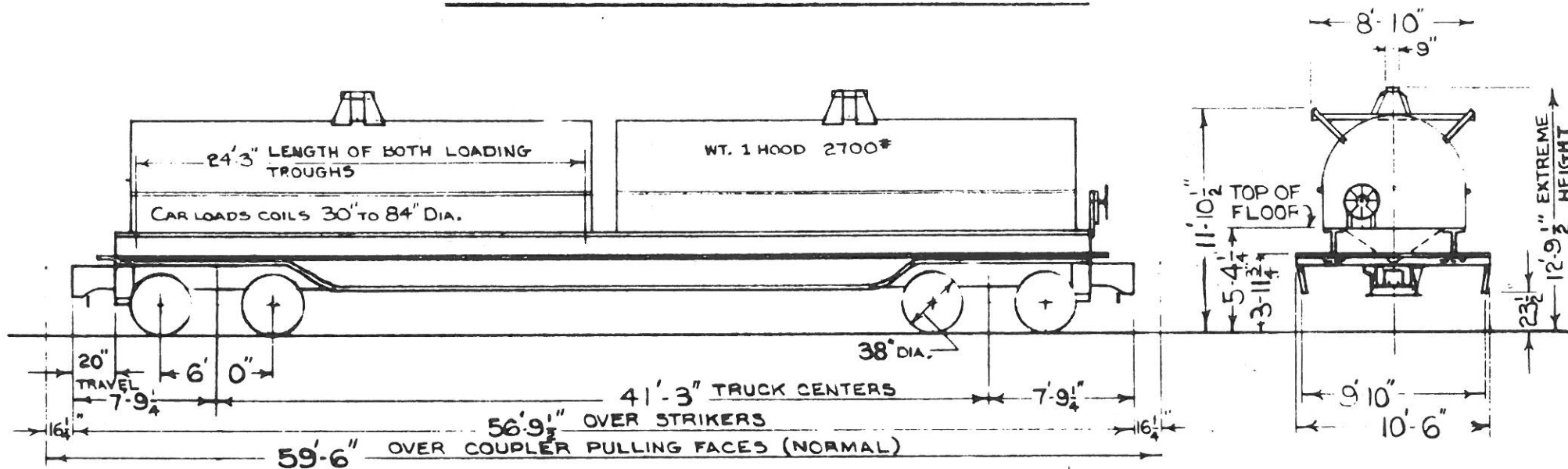
WHEELS:- ONE WEAR WROT STEEL.
 WEIGHT OF BOLSTER:-
 " " SIDE FRAME:-
 " " ONE TRUCK:-

BODY
 AIR BRAKE MFG. - N.Y.A.B. Co.
 " SCHEDULE:- AB.
 BODY CENTER PLATE:- 13 3/4" FORGED STEEL.
 " SIDE BEARING:- HARDENED AXLE STEEL.
 CENTER SILL:- BUILT-UP.
 " COVER PLT. - 1/2" x 28"
 " AREA:- (FISH BELLY)
 COUPLER:- "E" 6 1/2 x 8" SLOTTED. BOTTOM OP.
 " RELEASE RIG:- "IMPERIAL" ROTARY.
 DRAFT GEAR:- "MINER" A-22-XB. 2 1/2" TRAVEL.
 " ATTACHMENT:- C.S. YOKE-BUCKEYE

TRUCK
 BOLSTER:- B.S.C. PATT. No. B-741.
 BRAKE BEAM:- "UNIT" 20000 LBS. CAPY. (NO.3)
 " SAFETY:- NONE.
 CENTER PLATE:- CAST INTEGRAL WITH BOLSTER
 GENERAL DRAWING:-
 JOURNAL:- 6" x 11"
 " BOX:- INTEGRAL.
 R.R. SPEC. NO.- 112
 SIDE BEARING:- "STUCKI" SPRING STEEL.
 " FRAME:- B.S.C. PATT. NO. F-740
 WITH WASTE RETAINER RIBS -
 SPRINGS; A.A.R. "H-2" - 1 5/8" TRAVEL
 AND "SIMPLEX" SNUBBERS
 TRUCK; DOUBLE TRUSS - "UNIT"

CARS:- 900-949
 D. T. & I.
 MOTIVE POWER DEPT. 9-1-42
 REVISION
 9-572-60 5/62 1/65 5/
 R.L. RN. FAM FR 70

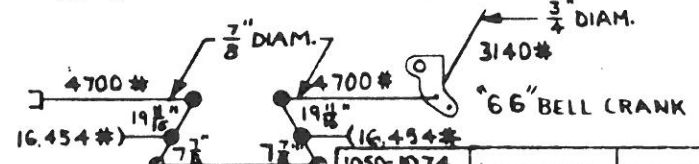
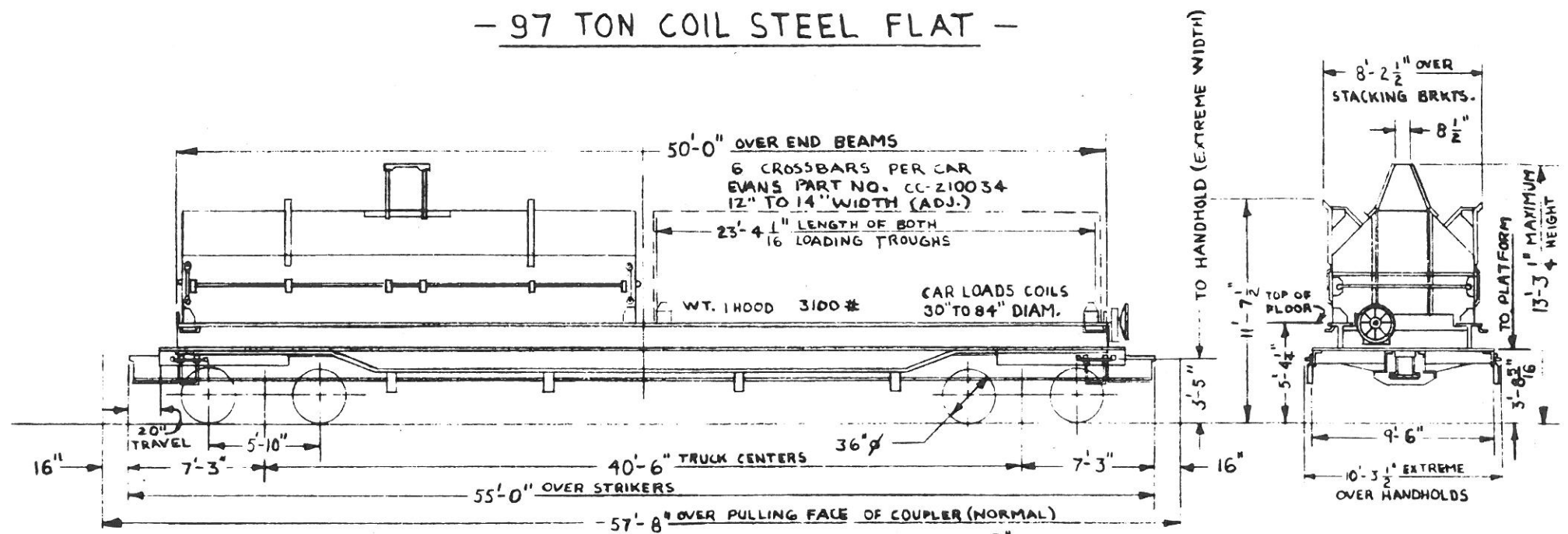
- 114 TON COIL STEEL FLAT -



HAND BRAKE DIAGRAM

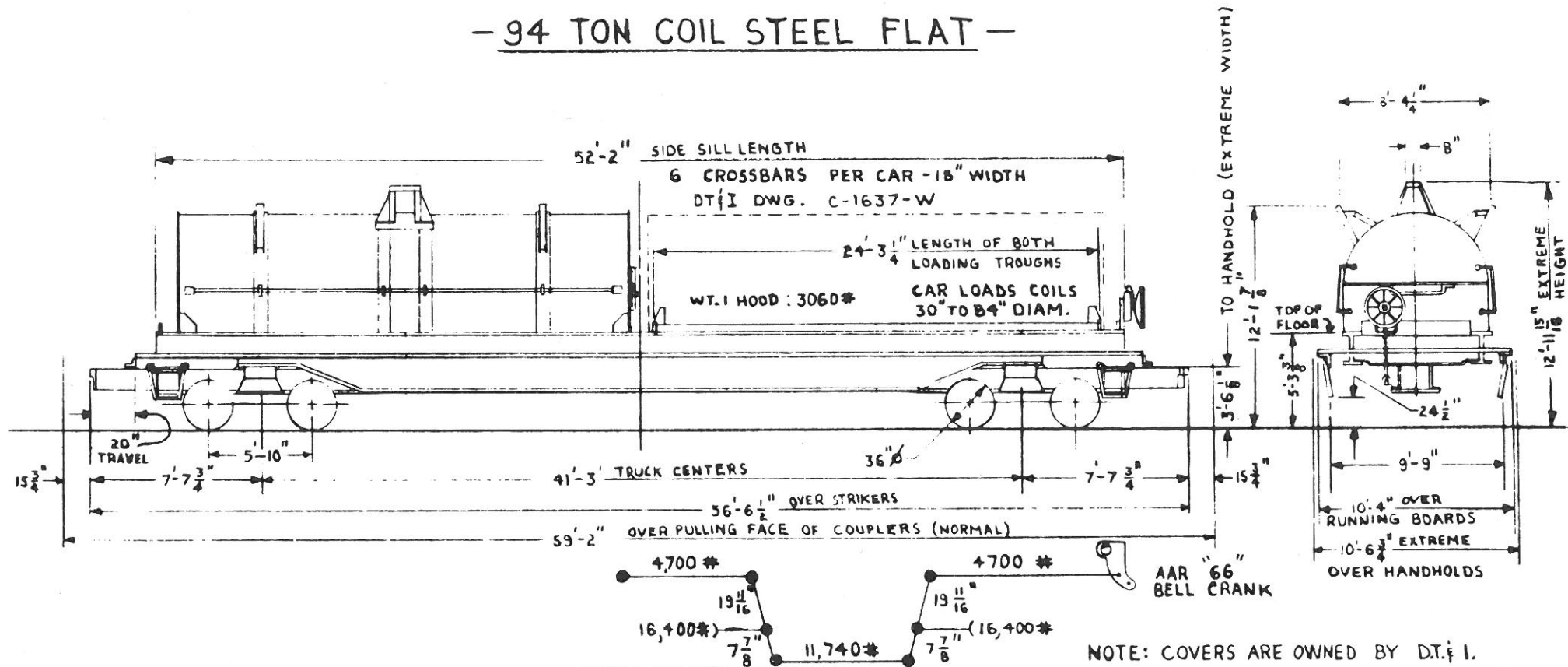
| | | |
|---|--|--|
| - GENERAL - | DRAFT GEAR: MINER RF-333 (HIGH CAPACITY) | GENERAL DWG: NAT'L CAST. 45894 |
| BUILDER: WHITEHEAD & KALES | DRAFT GEAR ATTACHMENT: GRADE "B" C.S. YOKE (B-Y45) | JOURNALS: 7" x 12" ROLLER BEARING |
| YEAR BUILT: 1965 | END SILL: 12" WF 45# FT BEAM & 1/4" PLT'S. | JOURNAL BEARINGS: TIMKEN 7" x 12" AP |
| A.A.R. CLASS: FMS | FLOOR: 3" OAK - 30° SLOPE | JOURNAL BEARING RETAINER: NAT'L CASTING 43135 |
| NO. BUILT: 1 | GENERAL DWG: AA229-370- (DT&I V-8190) | SIDE BEARINGS: STUCKI DOUBLE ROLLER (DT&I DWG. 7-5817) |
| AVE. LT. WT: 85,200 LBS. | HAND BRAKE: UNIVERSAL 7400 | SIDE FRAME: NAT'L CASTINGS PATT NO. 45677-1 |
| AVE. LOAD LIMIT: 229,800 LBS. | RUNNING BOARD: BLAW-KNOX NX-16 GRATING | NARROW PEDESTAL JAW AAR IDENT NO. 983 |
| MIN. RADIUS CURVE: 195 FT. | SIDE BEARING CENTERS: 4'-2" | SPRINGS: 2 1/2" TRAVEL AAR D-3 |
| | SIDE SILL: 36" WF @ 182# FT. BEAM (MODIFIED) | 16 OUTER 216 INNER COILS PER TRUCK |
| - BODY - | | TYPE OF TRUCK: 7 x 12 NATIONAL SUPER C-1 |
| AIR BRAKE MFG.: WESTINGHOUSE | | EQUIPPED FOR ROLLER BEARINGS AND |
| AIR BRAKE SCHEDULE: ABD-1 VALVE WABCO PAC | | TRUCK MOUNTED BRAKES |
| B-4, 9 UNITS, WITH J-1 RELAY VALVE | | WHEELS: 38" ONE WEAR WROT STEEL B-38 |
| BODY CENTER PLATE: 15 3/4" FABRICATED | | |
| BODY SIDE BEARING: C-1043 STEEL - HEAT TREATED | | |
| TO 260-350 BHN. 4" x 2" x 1/8" | | |
| CENTER SILL: SLIDING: 2 L.A.H.T. 412# ZEE | | |
| STATIONARY: NONE | | |
| CENTER SILL AREA: SLIDING - 24.24 SQ. IN. | - TRUCK - | |
| COUPLER: B-E4942 B-HT TYPE 'E' HEAD TYPE 'F' | BOLSTER: NATIONAL CASTINGS PATT # 44490-6 | |
| SHANK: 43" PULLING FACE TO PIN | DT&I DWG. AAR IDENT NO. 1984 | |
| COUPLER RELEASE RIGGING: STD. RY. EQUIP. 4U-19239 | BRAKE BEAM: WAB. UNIT # 570256 (INCL. PISTON) | |
| CUSHIONING DEVICE: KEYSTONE - 20" TRAVEL | BRAKE SHOES: RAIL ROAD FRICTION PRODUCTS | |
| | V-141 (COMPOSITION) | |
| | | CAR : 1000 |
| | | DT & I |
| | | MECHANICAL ENGINEERING DEPT 6-21-65 |
| | | - REVISIONS - |
| | | 7/65 5/70 |

- 97 TON COIL STEEL FLAT -



| | | | | |
|--|--|--|--|---------------------------------------|
| <p>HAND BRAKE DIAGRAM</p> <p>1050-1074 1075-1084</p> | | <p>LESSOR</p> <p>U.S. RAILWAY LEASING CO.</p> | <p>LEASE 4026 LEASE 4026-1</p> | <p>TERM 9-30-77 TERM 12-11-77</p> |
| <p>- GENERAL -</p> <p>BUILDERS: EVANS PRODUCTS CO. YEAR BUILT: 1967 BUILDERS REFERENCE: 1050-1074 1-6011 1075-1084 1-6014</p> <p>NO. BUILT: 35 (TOTAL) A.A.R. CLASS: FMS AVE. LT. WT.: 67,700 LBS. AVE. LOAD LIMIT: 195,300 LBS.</p> | | <p>CUSHIONING DEVICE: "HYDRA-CUSHION" CG-4046 20" TRAVEL DRAFT GEAR: WAUGH 700 (M-90) DRAFT GEAR ATTACHMENT: GRADE "B" BY 40 YOKE ENDSILL: 12" WF @ 40#/FT. & 3/8" WEB PLATES FLOOR: 2 3/8" BRUCE "DURAWOOD" GENERAL DWG.: EVANS PRODUCTS EC-201028-E HAND BRAKE: AJAX 14665-B RUNNING BOARD: MORTON MFG. CO. SIDE SILL: 30" WF @ 108#/FT. (MODIFIED) A-36 STEEL</p> | <p>BUCKEYE PATT. NO. F-1064 (DT&I DWG.) A.A.R. IDENT. NO. B-986 - NARROW PEDESTAL SPRINGS: AAR D-3 14 OUT, 8 INNER PER TRUCK TYPE OF TRUCK: BARBER S-2-A 6 1/2" X 12" STABILIZED, SPRING PLANKLESS WHEELS: 36" 1 WEAR CAST STEEL CU-36</p> | |
| <p>- BODY -</p> <p>AIR BRAKE MFG: WESTINGHOUSE AIR BRAKE AIR BRAKE SCHEDULE: ABD, WABCO PAC B3-8 1/2 UNITS BODY CENTER PLATE: 13 3/4" CAST STEEL "A" END - EVANS EC-1797 "B" END - EVANS EC-1795</p> <p>BODY SIDE BEARING: CENTER SILL: SLIDING: 2 Z-26 @ 4.2#/FT. A-36 STEEL STATIONARY: 2 Z-26 @ 31.3#/FT. A-36 STEEL CENTER SILL AREA: SLIDING: 24.24 SQ. IN. STATIONARY: 18.40 SQ. IN.</p> <p>COUPLER: BE-67-HT 25" SHANK BOT. OPER. COUPLER RELEASE RIGGING: STANRAY</p> | | <p>- TRUCK -</p> <p>BOLSTER: AAR CODE B95-OIHN-BN BUCKEYE PATT. NO. B-1088 (DT&I DWG. W-7890, AAR. IDENT. NO. B-1921)</p> <p>BRAKE BEAM: WESTINGHOUSE UNIT NO. 566247 (INCL. PISTON) BRAKE SHOES: COMPOSITION R.F.R. V-141 GENERAL DWG.: JOURNALS: 6 1/2" X 12" ROLLER BEARINGS JOURNAL BEARINGS: SIDE BEARINGS: STUCKI 688-B (Z-5817) SIDE FRAME: AAR CODE F93-OIHN-UA</p> | | |
| | | <p>CARS: 1050-1084</p> <p>D.T. & I. RAILROAD</p> <p>MECHANICAL ENGINEERING DEPT. 12-17-69 - REVISIONS -</p> | | |

- 94 TON COIL STEEL FLAT -

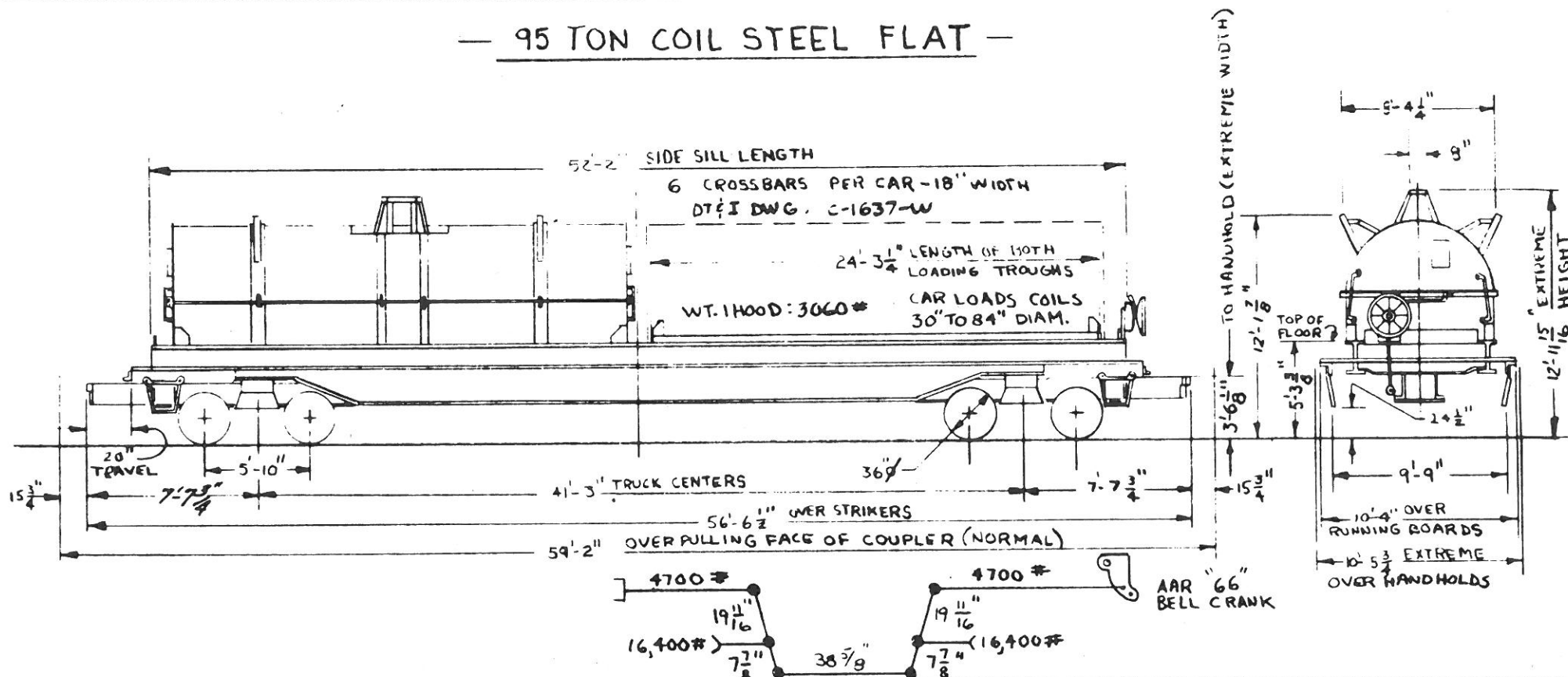


HAND BRAKE DIAGRAM

NOTE: COVERS ARE OWNED BY DT. & I.

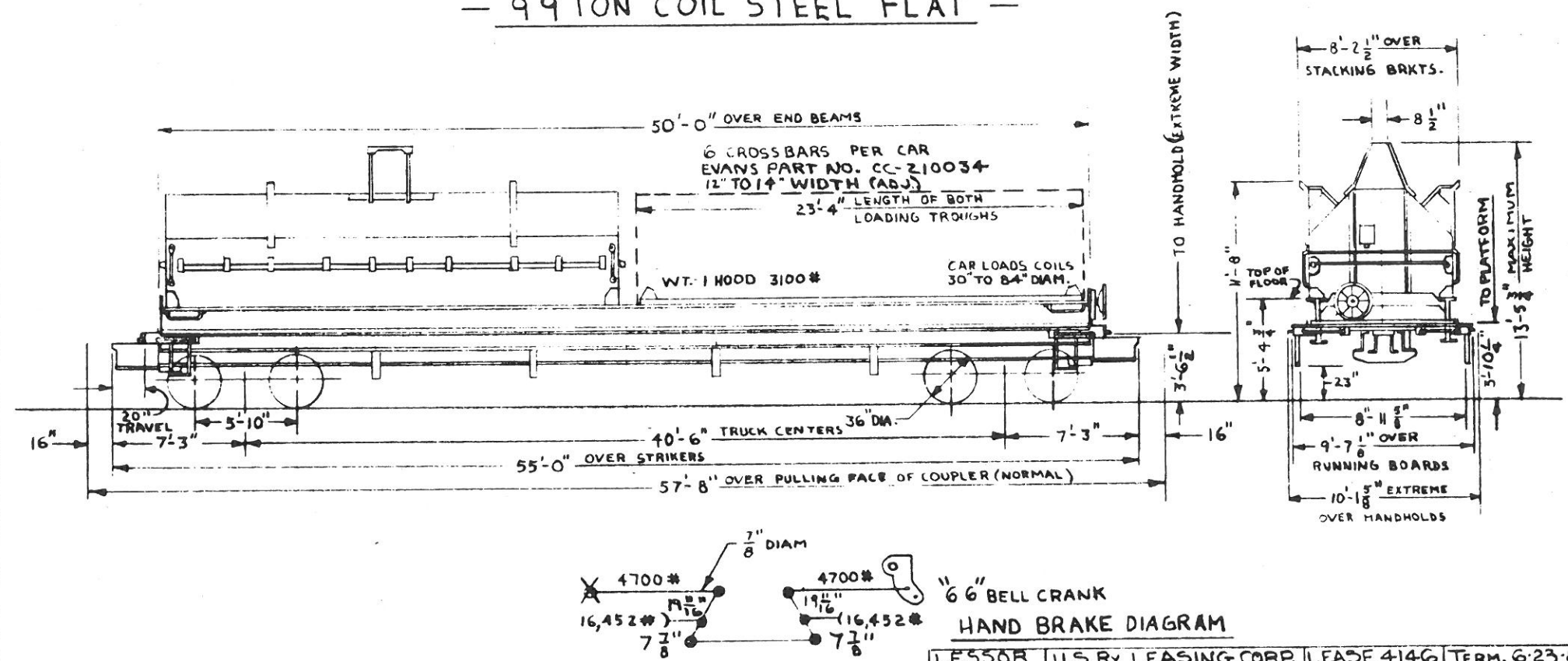
| | | LESSOR | WOLVERINE LEASING | LEASE 4043 | TERM 11-14-77 |
|---|--|--|-------------------|------------|---------------|
| -GENERAL- | | | | | |
| BUILDER: WHITEHEAD & KALES | FLOOR: 3" OAK SHIPPED LAPPED | NO. 948 GRADE "C" STEEL NARROW PEDESTAL | | | |
| YEAR BUILT: 1967 | GENERAL DWG. W. & K. R232-510-7 (DWG. V-8700) | SPRINGS: AAR D-3 14 OUTER AND 10 INNER PER TRUCK | | | |
| BUILDERS REF. RF-18025 | HAND BRAKE: UNIVERSAL 7400-3-1966 | TYPE OF TRUCK: ASF RIDE CONTROL 6 1/2" X 12" | | | |
| AAR CLASS: FMS | RUNNING BOARD: U.S. GYPSUM 62280 (DWG. W-8695) | STABILIZED, EQUIPPED FOR ROLLER | | | |
| NO. BUILT: 100 | SIDE SILL: 36" WF @ 135#/FT. (MODIFIED) A-36 | BEARINGS AND TRUCK MOUNTED | | | |
| AVE. LT. WT. 73,600 LBS. | | BRAKES. LIGHT WEIGHT, GRADE "C" STEEL DESIGN | | | |
| AVE LOAD LIMIT 189,400 LBS. | | WHEELS: 36" 2 WEAR WROT. STEEL H-36 | | | |
| -BODY- | | | | | |
| AIR BRAKE MFG: WESTINGHOUSE AIR BRAKE | | | | | |
| AIR BRAKE SCHEDULE: ABD, WABCO PAC 83-8 1/2" UNITS | | | | | |
| BODY CENTER PLATE: 13 3/4" FABRICATED (DWG. Y-8800) | -TRUCK- | | | | |
| BODY SIDE BEARING: WEDGE SECTION C-1045 (DWG. Y-8130) | BOLSTER: AAR CODE B9A-IITN-FX ASF PATT. NO. 22160-X (DWG. W-8702) AAR IDENT. NO. 2044 GRADE "C" STEEL ROLLER BEARING | | | | |
| CENTER SILL: SLIDING 2, 2-26 @ 41.2#/FT. A-441 STEEL | BOLSTER WEAR PLATE: HORIZONTAL DWG. Z-8692 | | | | |
| CENTER SILL AREA: 24.24 SQ. IN. | VERTICAL DWG. Y-8097 | | | | |
| COUPLER: BE-60 AHT 2 1/2" SHANK BOTT. OPER. | BRAKE BEAM: WEST. UNIT NO. 566247 (INCLUDE PISTON) | | | | |
| COUPLER RELEASE RIGGING: STANRAY 4U-20882-B (DWG. V-8798) | BRAKE SHOES: COMPOSITION R.F.P. V-141 | | | | |
| CUSHIONING DEVICE: KEYSTONE 20" TRAVEL | GENERAL DWG. ASF. 73805- (DWG. W-8706) | | | | |
| DRAFT GEAR: MINER RF 333 | JOURNALS: 6 1/2" X 12" ROLLER BEARINGS | | | | |
| DRAFT GEAR ATTACHMENT: GRADE "B" CAST STEEL YOKE B-Y40 | JOURNAL BEARINGS: TIMKEN 6 1/2" X 12" 1-A | | | | |
| END SILL: 12" WF @ 45#/FT. & 1/4" WEB PLATES | SIDE BEARINGS: STUCKI 688-B (DWG. Z-5817) | | | | |
| | SIDE FRAME: AAR CODE F9C-OZ DN-UA ASF PAR. NO. 22088-A (DWG. W-8704) AAR IDENT. | | | | |
| | | CARS: 1100-1199 | | | |
| | | D.T. & I RAILROAD | | | |
| | | MECHANICAL ENGINEERING DEPT. 10-10-69 | | | |
| | | -REVISIONS- | | | |

— 95 TON COIL STEEL FLAT —



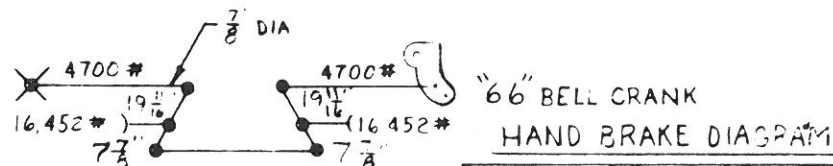
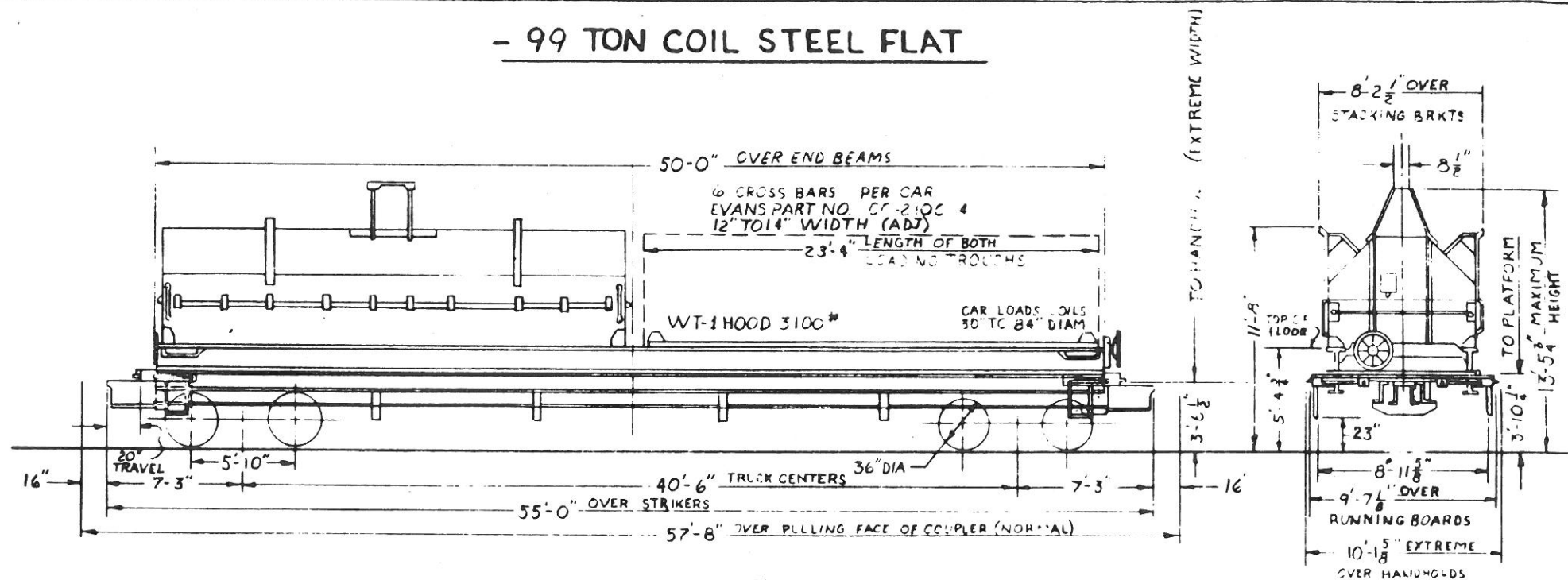
| | | | | | |
|---|--|---|--|---|--|
| - GENERAL - | | YOKO B Y-40 | | TYPE OF TRUCK ASF RIDE CONTROL 6 1/2" X 12" | |
| BUILDER: WHITEHEAD AND KALES | | END SILL: 12" WF @ 45#/FT. 1/4" WEB PLATES | | STABILIZED, EQUIPPED FOR ROLLER | |
| YEAR BUILT: 1968 | | FLOOR: 3" OAK SHIPPED LAPPED | | BEARINGS AND TRUCK MOUNTED BRAKES. | |
| BUILDERS REF.: RF-76035 | | GENERAL DWG. W&K R232-790- (DT&I DWG.) | | LIGHT WEIGHT, GRADE "C" STEEL DESIGN | |
| AAR CLASS: FMS | | HAND BRAKE: UNIVERSAL 7400-3-1966 | | WHEELS: 36" ZWEAR CAST STEEL CU-36 | |
| NO. BUILT: 100 | | RUNNING BOARD: U.S. GYPSUM 62280 (DWG. W-8693) | | | |
| AVE. LT. WT.: 72,700 LBS. | | SIDE SILL: 36" WF @ 135#/FT. (MODIFIED) A-36 | | | |
| AVE. LOAD LIMIT: 190,300 LBS. | | | | | |
| - BODY - | | - TRUCK - | | | |
| AIR BRAKE MFG: WESTINGHOUSE AIR BRAKE | | BOLSTER: AAR CODE B9A-IITN-FX ASF PATT. NO. 22160-X (DWG. W-8702) AAR IDENT. NO. 2044 GRADE "C" STEEL ROLLER BEARING | | | |
| AIR BRAKE SCHEDULE: ABD, WABCO PAC B3-8 1/2" | | BOLSTER WEAR PLATE: HORIZONTAL DWG. Z-869Z VERTICAL DWG. Y-8097 | | | |
| UNITS | | BRAKE BEAM: WEST. UNIT NO. 566247 (INCLUDE PISTON) | | | |
| BODY CENTER PLATE: 13 3/4" FABRICATED (DWG. Y-8000) | | BRAKE SHOES: COMPOSITION R.F.R V-141 | | | |
| BODY SIDE BEARING: WEDGE SECTION C-1045 (DWG. Y-8130) | | GENERAL DWG. ASF 74177 (DWG. W-8706) | | | |
| CENTER SILL: SLIDING 2-Z-26 @ 41.2#/FT. A-441 STEEL | | JOURNALS: 6 1/2" X 12" ROLLER BEARINGS | | | |
| CENTER SILL AREA: 24.24 SQ. IN. | | JOURNAL BEARINGS: HYATT 6 Y 2" X 12" GA | | | |
| COUPLER: BE-60 ANT, 21 1/2" SHANK BOTT. OPER. | | SIDE BEARINGS: STUCKI 688-B (DWG. Z-5817) | | | |
| COUPLER RELEASE RIGGING: STANRAY 4U-20882-B (DWG. V-8798) | | SIDE FRAME: AAR CODE F9C-02DN-UA ASF PAT. NO. 22088-A (DWG. W-8704) AAR IDENT. NO. 948 GRADE "C" STEEL, NARROW PEDESTAL | | | |
| CUSHIONING DEVICE: KEYSTONE - 20" TRAVEL | | SPRINGS: AAR D-3 14 OUTER, 10 INNER PER TRUCK | | | |
| DRAFT GEAR: MINER RF 353 | | | | | |
| DRAFT GEAR ATTACHMENT: GRADE "B" CAST STEEL | | | | | |
| | | | | CARS: 1200-1299 | |
| | | | | D.T. & I. RAILROAD | |
| | | | | MECHANICAL ENGINEERING DEPT. 1-9-70 | |
| | | | | - REVISIONS - | |

- 99 TON COIL STEEL FLAT -



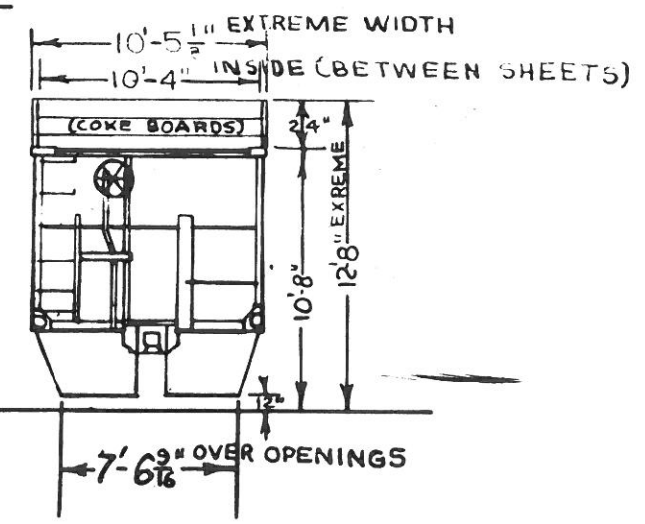
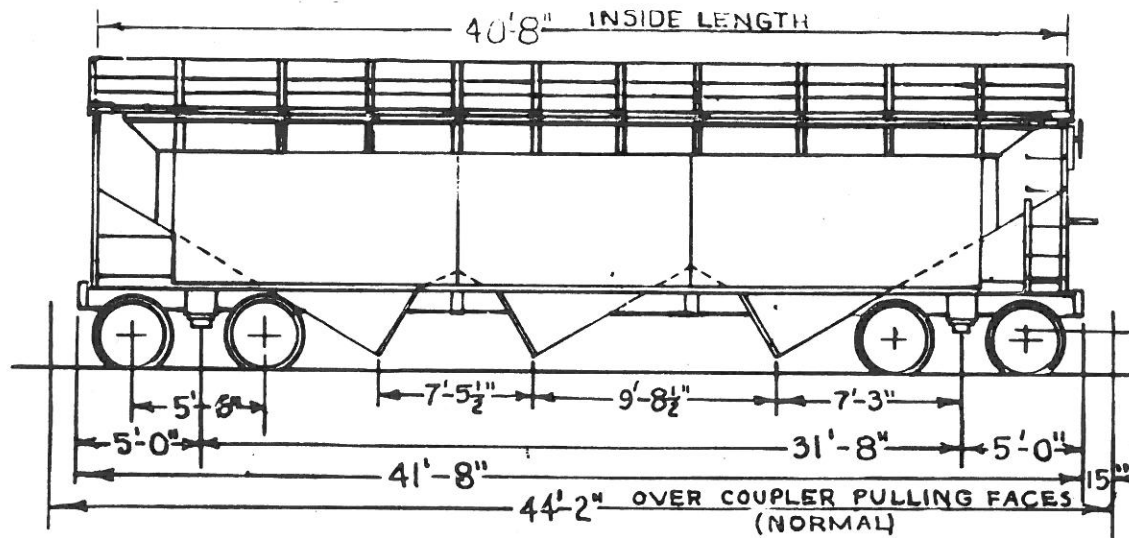
| | | | | | |
|--|--|--|--|--|--|
| <p align="center">- GENERAL -</p> <p>BUILDER: EVANS PRODUCTS CO. YEAR BUILT: 1968 BUILDERS REF.: 1-6019 A.A.R. CLASS: FMS AVE. LT. WT.: 63,100 LBS. AVE. LOAD LIMIT: 199,900 LBS.</p> | | <p>DRAFT GEAR ATTACHMENT: GRADE "B" C.S. B-Y40 YOKE END SILL: 10" WF @ 29#/FT. A-572-50-T2 FLOOR: 2 3/4" BRUCE "DURAWOOD" GENERAL DWG.: EVANS PRODUCTS IE-27020-G HAND BRAKE: AJAX 14665-B (1966) RUNNING BOARD MORTON MFG. CO. DWG. D100-003 SIDE SILL: FABRICATED WEB A-572-55-T2 STEEL FLANGE A-572-60-T2 STEEL</p> | | <p>LESSOR U.S. RY LEASING CORP. LEASE 4146 TERM. 6-23-83</p> <p>SPRINGS: AAR D-3 14 OUTER, 8 INNER COILS PER TRUCK TYPE OF TRUCK: BARBER S-2-A 6 1/2" X 12" STABILIZED, EQUIPPED FOR UNIT BRAKE BEAMS. WHEELS: 36" 1 WEAR CAST STEEL CH-36</p> | |
| <p align="center">- BODY -</p> <p>AIR BRAKE MFG.: WESTINGHOUSE AIR BRAKE AIR BRAKE SCHEDULE: ABD, WABCO PAC B-3 8 1/2" UNITS BODY CENTER PLATES: 1 3/4" CAST STEEL "A" END WAUGH CG-3881 "B" END WAUGH CG-3882 BODY SIDE BEARING: STUCKI 794 CENTER SILL: SLIDING: 2, 2-26 @ 41.2#/FT. A-572-50-T2 STATIONARY: 2, 2-26 @ 31.3#/FT. A-36 CENTER SILL AREA: SLIDING: 24.24 SQ. IN. STATIONARY: 18.40 SQ. IN. COUPLER: BE-67-HT 25" SHANK BOTT. OPER. COUPLER RELEASE RIGGING: STANRAY 4U-21080 CUSHIONING DEVICE: HYDRA-CUSHION TYPE 13 20" TRAVEL CG-4046 DRAFT GEAR: WAUGH 700 (M-901)</p> | | <p align="center">- TRUCK -</p> <p>BOLSTER: AAR CODE: B7S-OBUN-BN SYM. WAYNE PAT. NO. 80-9211 (PT. W-10082) AAR IDENT. NO. B-2064 ROLLER BEARING BRAKE BEAM: WESTINGHOUSE 566247 (INCLUDING PISTON) BRAE SHOES: REP. V-141 GENERAL DWG.: EVANS PRODUCTS IX-26741-B JOURNALS: 6 1/2" X 12" ROLLER BEARINGS JOURNAL BEARINGS: TIMKEN 6 1/2" X 12" 1-A SIDE BEARINGS: STUCKI 688-B (DWG. C-5817) SIDE FRAME: AAR CODE: F9S-OIBN-UA SYM. WAYNE PAT. NO. TF-9057-PAT. NO. 2,888,888 AAR IDENT. NO.</p> | | <p align="center">CARS: 1300 - 1349</p> <p align="center">D.T. & I RAILROAD</p> <p align="center">MECHANICAL ENGINEERING DEPT. 12-3-69</p> <p align="center">- REVISIONS -</p> | |

- 99 TON COIL STEEL FLAT



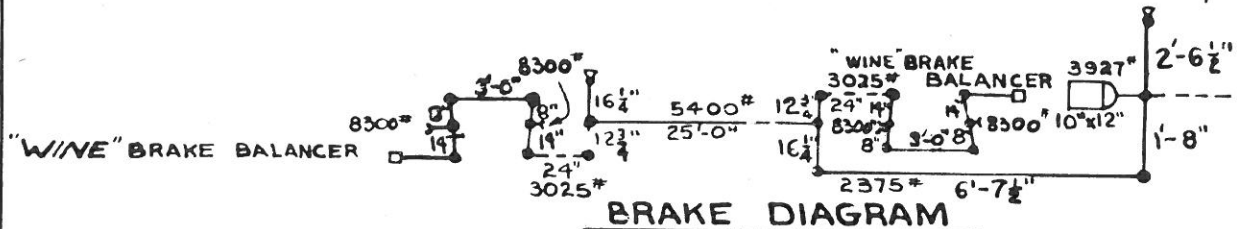
| | | | |
|---|--|---|---|
| - GENERAL - | | DRAFT GEAR ATTACHMENT: <i>BY-40 YOKE</i> | LESSOR U.S. RY LEASING CORP. LEASE 4299 TERM. 6-28-85 |
| BUILDER: U.S. RAILWAY EQUIPMENT CO. | | END SILL: 10" WF @ 29.6#/FT. ASTM A-572-50-T2 | AAR IDENT. NO. NARROW PEDESTAL |
| YEAR BUILT: 1970 | | FLOOR: 2 3/4" BRUCE DURA-WOOD | SPRINGS: AAR D-3 14 OUTER 6 INNER COILS |
| BUILDERS REF.: 982 | | GENERAL DWG: EVANS 1E-27020-6 | PER TRUCK |
| A.A.R. CLASS: FMS | | HAND BRAKE: AJAX #14665-B (1966) | TYPE OF TRUCK: BARBER S-2-A |
| AVE. LT. WT.: 64200 LBS. | | RUNNING BOARD: MORTON D-100-003 | |
| AVE. LOAD LIMIT: 198,800 LBS. | | SIDE SILL: FABRICATED BEAM, INLAND STEEL | WHEELS: 36"-1 WEAR CAST STEEL CH-36 |
| | | FLANGE ASTM A-572-60-T2 | |
| | | WEB ASTM A-572-55-T2 | |
| - BODY - | | - TRUCK - | |
| AIR BRAKE MFG.: WESTINGHOUSE AIR BRAKE CO. | | BOLSTER: A.A.R. CODE B95-08UN BN DRESSER | |
| AIR BRAKE SCHEDULE: ABD VALVE, WABCO PAC | | PATT NO. 80-9211 (QWB.14.W-10082) | |
| 8-3 8 1/2" UNIT | | ROLLER BEARING | |
| BODY CENTER PLATES: 13 3/4" CAST STEEL | | BRAKE BEAM: WABCO. 566297 | |
| "A" END WEAUGH (G 3882) | | | |
| "B" END WEAUGH (G 3881) | | | |
| BODY SIDE BEARING: STUCCI "794 | | | |
| CENTER SILL: SLIDING: 2- B 26 @ 41.5#/FT. ASTM A-572-50 | | | |
| STATIONARY: 2- B 26 @ 31.5#/FT. ASTM A-36 | | | |
| CENTER SILL AREA: 29.24" IN. ² | | BRAKE SHOES: RFP V-AI COMPOSITION | |
| STATIONARY: 18.40 IN. ² | | GENERAL DWG. DT. II. W-10318 | |
| COUPLER: BEGT-HI (ASTM A-572-50) REF. Q12720-5 | | JOURNALS: 6 1/2" x 12" ROLLER BEARINGS | |
| COUPLER RELEASE RIGGING: STANBAY 4U-2080 | | JOURNAL BEARINGS: HYATT OR SKF | |
| CUSHIONING DEVICE: HYDRO-CUSHION TYPE 13 | | SIDE BEARINGS: STUCCI "688-B (DWA. 15817) | |
| 20 IN. TRAVEL CG 4046 | | SIDE FRAME: A.A.R. CODE F95-01BN-UA DRESSER | |
| DRAFT GEAR: WEAUGH TYPE 700 (DWA. 48-7330) | | PATT NO. B-TF-9057P (DT. II. DWA. V-10083) | |
| | | CARS: 1350-1355 | |
| | | DT & I RAILROAD | |
| | | MECHANICAL ENGINEERING DEPT. - 7-22-70 | |
| | | - REVISIONS - | |

55 TON HOPPER



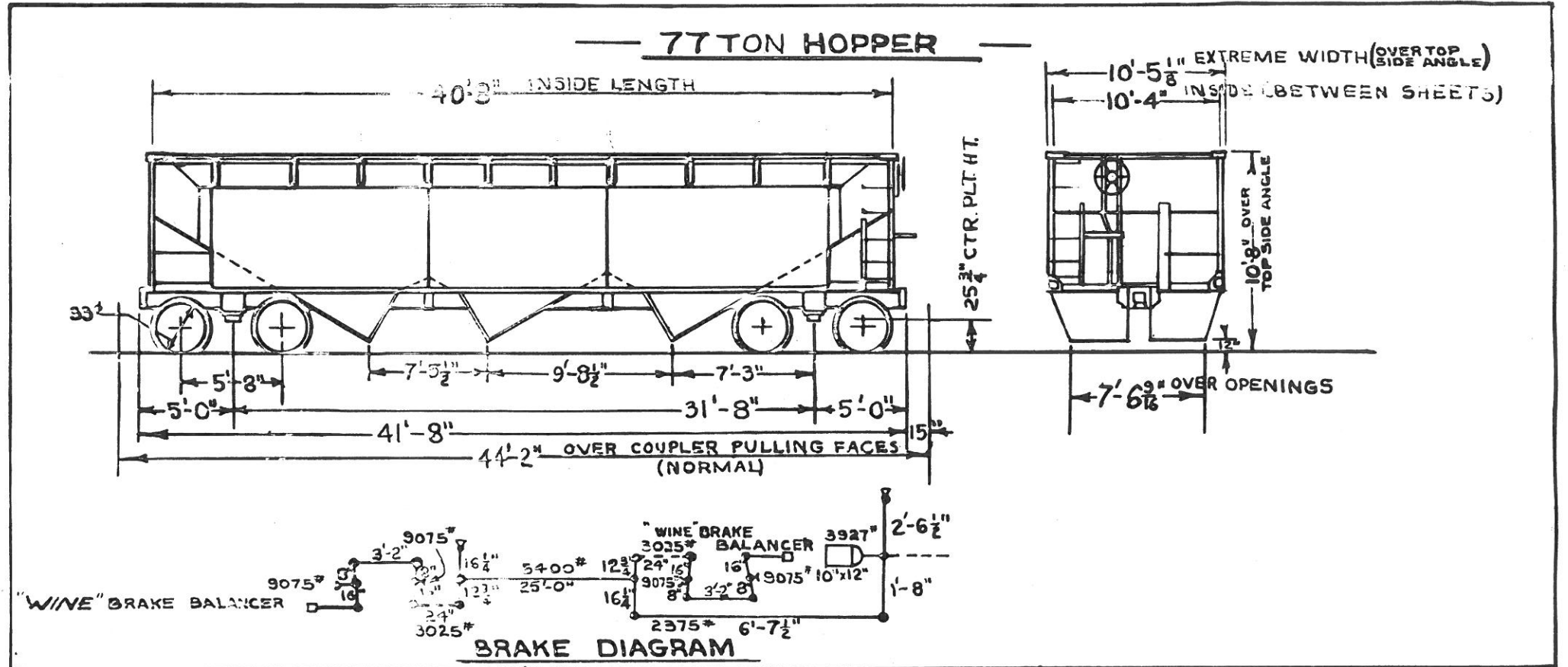
NOTE: FOLLOWING ARE INDIVIDUAL CAR NOS FOR CARS EQUIPPED WITH 55 TON TRUCKS 1964;

1622 1623 1636*

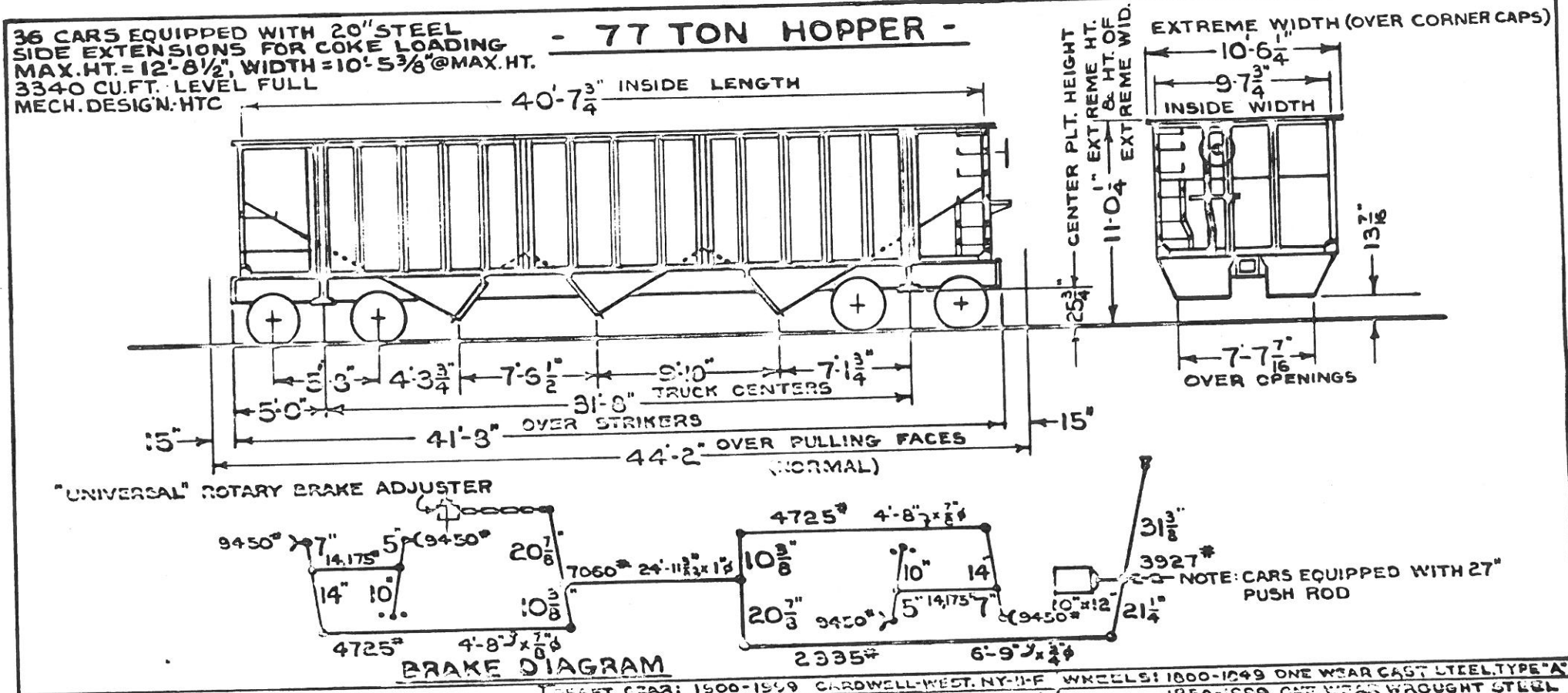


BRAKE DIAGRAM

| | | | | | | | | | | | | |
|---|--|--|-----|------|------|-----|--|--|--|--|--|--|
| — GENERAL — | | | | | | | | | | | | |
| BUILT BY: GREENVILLE STEEL CAR CO. | DRAFT GEAR: MINER & WESTINGHOUSE | WHEELS: 1 WEAR WROT STEEL, 33" DIA. | | | | | | | | | | |
| YEAR BUILT: 1948 | " ATTACHMENT: C.S. YOKE NAT'L | WT. OF BOLSTER: | | | | | | | | | | |
| BUILDERS REF.: 506 | END SILL: 6" x 3 1/2" x 5 1/8" L | " " SIDE FRAME: | | | | | | | | | | |
| RR. SPEC. NO. - 123 | FLOORING: 1/4" PLT. | " " ONE TRUCK: | | | | | | | | | | |
| AAR CLASS: HTC | GEN. DRAWING: 20342-A D.T. & I. - V-1231 | | | | | | | | | | | |
| NO. BUILT: 37 (CONVERTED FROM 77 TON) | HAND BRAKE: "AJAX" | | | | | | | | | | | |
| CAPY.: 2773 CU. FT.; WITH COKE BOARDS: 3552 CU. FT. | SIDE SILL: 5" x 3 1/2" x 3 1/8" L | | | | | | | | | | | |
| AVERAGE LT. WT.: 46900 LBS | " BRG. CENTERS: 4'-2" | | | | | | | | | | | |
| " LOAD LIMIT: 190,100 LBS | | NOTE: CARS MARKED * HAVE COKE BOARDS REMOVED, ACCOUNT LURMET SCRAP LOADING | | | | | | | | | | |
| — BODY — | | | | | | | | | | | | |
| AIR BRAKE MFR. - N.Y.A.B. | BOLSTER: BSC PAT. 5-5321 WITH DL. FULCRUM BKT. | | | | | | | | | | | |
| " " SCHEDULE: A9. | BRAKE BEAMS: UNIT TYPE - NO 18 | | | | | | | | | | | |
| BODY CTR. PLT.: 13 3/4" FORGED STEEL | CENTER PLATE: INTEGRAL | | | | | | | | | | | |
| " SIDE BRG.: HARDENED STEEL PLT. | GEN. DRAWING: DT. & I. W-3138 | | | | | | | | | | | |
| CENTER SILL: 12 3/4" x 36.2" | JOURNAL: 8 1/2" x 10" BOX: INTEGRAL | | | | | | | | | | | |
| " " COVER PLATE: NONE | SIDE BRG.: "STUCKI" ROLLER TYPE | | | | | | | | | | | |
| " " AREA: 21.3 SQ. IN. | " FRAME: AAR IDENT NO. 289 | | | | | | | | | | | |
| COUPLER: "E" 6 1/4" x 8" - SLOTTED BOTTOM OR | SPRINGS: 3 1/2" TRAVEL - ASF | | | | | | | | | | | |
| " RELEASE RIG: "IMPERIAL" ROTARY | | | | | | | | | | | | |
| DOOR FIXTURES: WINE | TYPE OF TRUCK: "UNIT" A-3 RIDE CONTROL | | | | | | | | | | | |
| | SPRING PLANKLESS | | | | | | | | | | | |
| | | CARS: 1600-1649 | | | | | | | | | | |
| | | D.T. & I. | | | | | | | | | | |
| | | MOTIVE POWER DEPT. 5-23-62 | | | | | | | | | | |
| | | REVISION | | | | | | | | | | |
| | | <table border="1"> <tr> <td>3/4</td> <td>1/63</td> <td>7/10</td> <td>1/2</td> <td></td> <td></td> <td></td> <td></td> <td></td> <td></td> </tr> </table> | 3/4 | 1/63 | 7/10 | 1/2 | | | | | | |
| 3/4 | 1/63 | 7/10 | 1/2 | | | | | | | | | |

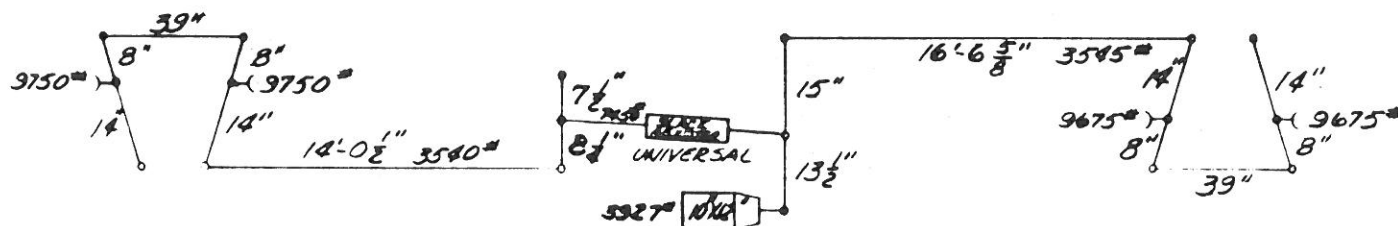
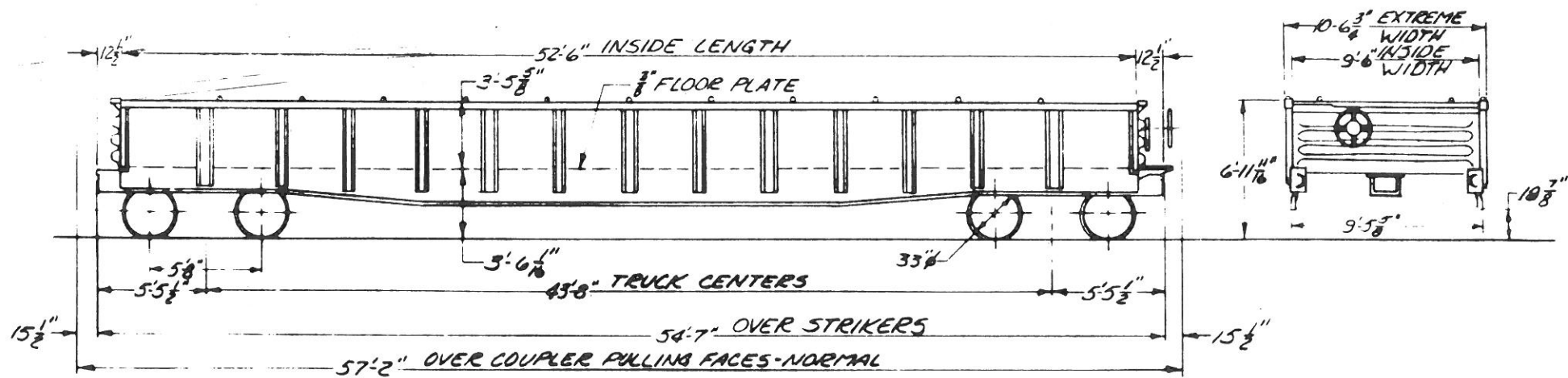


| | | | |
|---|--|--|--|
| — GENERAL — | | — TRUCK — | |
| BUILT BY: GREENVILLE STEEL CAR CO. | DRAFT GEAR: MINER & WESTINGHOUSE | WHEELS: 1 WEAR WROT STEEL, 25 1/2 WERE CAST IRON | |
| YEAR BUILT: 1948 | " " ATTACHMENT: C.S. YOKE NAT'L | WT. OF BOLSTER: | |
| BUILDERS REF: 506 | END SILL: 6" x 3 1/2" x 5/16" L | " " SIDE FRAMES: | |
| R.R. SPEC. NO: 123 | FLOORING: 1/4" PLT. | " " ONE TRUCK: 9400 LBS. | |
| AAR CLASS: HT | GEN. DRAWING: 20042-A D.T. & I.-V-1231 | | |
| NO. BUILT: 50 | HAND BRAKE: "AJAX" | | |
| CAPY: 2773 CU FT; WITH COKE BOARDS 55352028 | SIDE SILL: 5" x 3 1/2" x 3/8" L | | |
| AVERAGE LT. WT.: 48,900 LBS. | " DRG. CENTERS: 4'-2" | | |
| " LOAD LIMIT: 171,100 LBS. | | | |
| — BODY — | | — TRUCK — | |
| AIR BRAKE OPER. - W.C.A.B. | BOLSTER: D-5834A D.T. & I.-W-2456 | | |
| " " B.MEDULLAR. | BRAKE BEAMS: UNIT TYPE - NO 15 | | |
| BODY CON. PLT: 13 3/4" FORGED STEEL | " " SAFETY: "CRECO" | | |
| " SIDE SILL: HARDENED STEEL PLT. | CENTER PLATE: INTEGRAL | | |
| CENTER SILL: 12 1/2" x 3 1/2" | GEN. DRAWING: DT. & I. V-1231 | CARS: 1600-1649 | |
| " " COVER PLATE: NONE | JOURNAL: 6" x 11" BOX: INTEGRAL | D.T. & I. | |
| " " AREA: 21.9 SQ. IN. | R.R. SPEC: NO. 117 | MOTIVE POWER DEPT. | |
| COUPLER: 3" 6 1/2" x 8" - FLOTTED BOTTOM OR | SIDE BRG: "STUCKI" | 4-8-48 | |
| " " BASE RIG: "IMPERIAL" ROTARY | " FRAME: F-769 D.T. & I.-W-2817 | REVISION | |
| DOOR FIXTURES: WINE | SPRINGS: UNION SPRING & MFR CO. | | |
| | (COIL-ELLIPTIC - HYD-GOULD R-5035-A) | | |
| | TYPE OF TRUCK: "UNIT" SPRING PLANKLESS | | |
| | | | |



| | | | | | |
|---|--|---|--|---|--|
| - GENERAL - | | DRAFT CAR: 1500-1999 CARDWELL-WEST, NY-NJ | | WHEELS: 1800-1049 ONE WEAR CAST STEEL TYPE "A" | |
| BUILT BY: GREENVILLE STEEL CAR CO. | | DRAFT GEAR ATTACHMENT: C.C. YORK, Y.4.C.(S.G.) | | 1850-1999 ONE WEAR WROUGHT STEEL | |
| YEAR BUILT: 1950 | | END SILL: C'K 3/2" ANGLE | | WEIGHT OF ONE COLSTER: | |
| LOADERS REF: O.O.-729 | | FLOOR: 5/16" C.D.S. PLY. | | WEIGHT OF ONE SIDE FRAME: | |
| AAR CLASS: HT | | GENERAL DWG: G.S.C. 20557-3, DTCL V-4000 | | WEIGHT OF ONE TRUCK: 8250 LBS. | |
| NO. BUILT: 200 | | HAND BRAKE: VERTICAL WHEEL | | SPRINGS: 2AR "D-3", 2 1/2" TRAVEL 14 OUTER, 2 INNER | |
| CAPY.: 2700 CU. FT. - LEVEL FULL | | 1500-1050 - MINER C-2050-XL | | COILS PER TRUCK | |
| 3350 CU. FT. 10" AVE. HEAP | | 1900-1999 - MAX 1437T-J | | CARS EQUIPPED WITH SIDE EXTENSIONS: | |
| AVE. LT. WT: 51,700 LBS. | | SIDE SILL: 5" x 3 1/2" x 9/8" ANGLE | | 1804, 09, 12, 21, 33, 37, 38, 51, 59, 64, 65, 72, 76, 78, | |
| AVE. LOAD LIMIT: 169,700 LBS. | | SIDE BEARING CENTERS: 4'-2" | | 1879, 87, 92, 99, | |
| | | TOP SIDE ANGLE: 5" x 3 1/2" x 9/8" AT 13.07" FT. D.A. | | 1910, 11, 13, 19, 35, 40, 50, 58, 71, 73, 74, 76, 77, 79 | |
| | | | | 1981, 85, 91, 92. | |
| - BODY - | | - TRUCK - | | CARS: 1800-1999 | |
| AIR BRAKE MFG: SECOND HAND | | COLSTER: AAR CODE B7A-DIER-FY BUCKEYE PAT. | | D.T.&I. | |
| AIR BRAKE SCHEDULE: A3 1012 | | B-7034 (D.T.&I. W-4253) AAR INDENT. NO. 1245 | | MOTIVE POWER DEPT 3-11-59 | |
| BODY CENTER PLATE: 1 1/2" FORGED STEEL | | BRAKE BEAM: NO. 10 INT. CREGG OF BUFFALO | | - REVISIONS - | |
| BODY SIDE BEARING: 4" x 5" PLT. HARSPEC. MISC. | | CENTER PLATE: 1" THICK | | 1/65 3/70 | |
| CENTER SILL: 2, 12-SS AT DIA. (4) ROLLED SECTIONS | | GENERAL DWG: AAR 1005- DWG W-4001 | | | |
| CENTER SILL AREA: 5076 SQ. IN. | | JOURNAL: C#11" INTEGRAL BOX | | | |
| COUPLER: TYPE "E" 5 1/2" x 5" SLOTTED, LONG END | | SIDE BEARINGS: STUCKI CEG-C | | | |
| COUPLER RELEASE K13. STD. KY. EQUIP. 10-10-50 | | SIDE FRAME: AAR CODE: F7A-DIER-UA ACE | | | |
| DOORS: GREENVILLE | | CLEARANCE DIMENSIONS: 15" PAR. 15" HT. NO. 016 | | | |
| DOOR FITURES: WIRE BY APPLIANCE | | TYPE OF TRUCK: 77 TON 12-5 RISE CONTROL | | | |
| DRAFT GEAR: 1500-1059 - MINER A-22-XL | | SPRING PLANKERS: EQUIP FOR UNIT BRAKE TEAM | | | |

77 TON GONDOLA

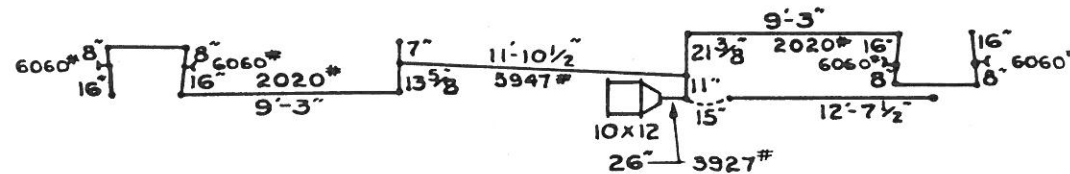
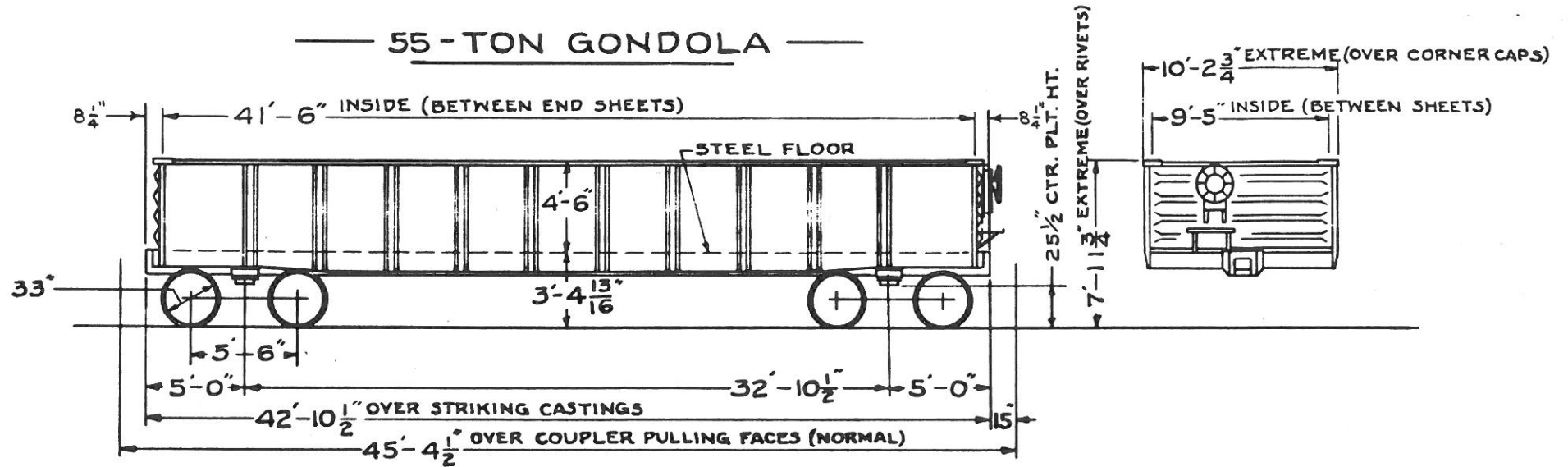


BRAKE DIAGRAM

LESSOR: CHICAGO FREIGHT CAR CO. LEASE: 4377-1 TERM: 4-16-83

| - GENERAL - | | - TRUCKS - | |
|--|---|--|---|
| BUILDER: AMERICAN CAR & FOUNDRY | GENERAL DWG: ACF 620-5806 (D.T. & I. V-1646) | BOLSTER: AAR CODE: B7A-0311-BN REF. PART. 212324 | TYPE OF TRUCK: 6"X11" A-3 RIDE CONTROL |
| YEAR BUILT: 352 YEAR REBUILT: 1973 | HANDBRAKE: MINER D-3290-XL | DI. FT. DWG. W-1760 AAR IDENT NO. 1242 | STABILIZED, EQUIPPED FOR UNIT BRAKE |
| BUILDERS REF.: LOT 3607 | LADING STRAPANCHORS: ILL. RY. CORP. 7428 (DWG. W-10554) | DI. FT. DWG. W-1760 AAR IDENT NO. 1242 | BEAM, INTEGRAL BOX SIDE FRAMES |
| AAR CLASS: 6B | SIDE SILL: ANGLE 6"X8"X3/4" QHS. | DI. FT. DWG. W-1760 AAR IDENT NO. 1242 | MODIFIED FOR ROLLER BEARINGS |
| NO. REBUILT: 188 (CHICAGO FREIGHT CAR) | SLACK ADJUSTER: UNIVERSAL 1900-DJ | DI. FT. DWG. W-1760 AAR IDENT NO. 1242 | WHEELS: 1 WEAR CAST STEEL CJ-33 |
| CAPACITY: 1730 CU. FT. | TOP END ANGLE: BULB ANGLE 5'X4 1/2" @ 19.1°/FT. | DI. FT. DWG. W-1760 AAR IDENT NO. 1242 | |
| AVE. LIGHT WT.: 59900 | TOP SIDE ANGLE: 2 1/2" @ 29.28°/FT. | DI. FT. DWG. W-1760 AAR IDENT NO. 1242 | |
| AVE. LOAD LIMIT: 160,100 | TOP SIDE ANGLE REINFORCEMENT: ANGLE 6'X3 1/2" X 3/4" | DI. FT. DWG. W-1760 AAR IDENT NO. 1242 | |
| | | | |
| | | | |
| - BODY - | | - TRUCKS - | |
| AIR BRAKE MFG.: NEW YORK AIR BRAKE | BOLSTER: AAR CODE: B7A-0311-BN REF. PART. 212324 | DI. FT. DWG. W-1760 AAR IDENT NO. 1242 | CARS: 2100-2287 D.T. & I. 3-7-73 MECHANICAL ENGINEERING DEP'T. - REVISIONS - |
| AIR BRAKE SCHEDULE: AB 10/2, Q57-PADN TR1230 VALVE | DI. FT. DWG. W-1760 AAR IDENT NO. 1242 | DI. FT. DWG. W-1760 AAR IDENT NO. 1242 | |
| BODY CENTER PLATE: 13 3/4" DROP FORGED (W-1685) | BRAKE BEAM: UNIT #18 | DI. FT. DWG. W-1760 AAR IDENT NO. 1242 | |
| BODY SIDE BEARING: ACF 220-6085 (QHS. Y-1713) | GENERAL DRAWING: DI. FT. DWG. W-2335 | DI. FT. DWG. W-1760 AAR IDENT NO. 1242 | |
| CENTER SILL: 2-B 26 @ 41.2°/FT. | JOURNALS: 6"X11" ROLLER BEARING | DI. FT. DWG. W-1760 AAR IDENT NO. 1242 | |
| CENTER SILL AREA: 24.24 SQ. IN. | JOURNAL BEARINGS: HYATT 6A OR BREMO 5A | DI. FT. DWG. W-1760 AAR IDENT NO. 1242 | |
| COUPLER: TYPE E B-6608-NI (AUTOM OPERATED) | SIDE BEARINGS: STUCKI 636-C DI. FT. DWG. Y-1710 | DI. FT. DWG. W-1760 AAR IDENT NO. 1242 | |
| COUPLER RELEASE RIGGING: STANBAY 10-W-2 (1457) | SIDE FRAME: AAR CODE: FM ORAN-UR (MODIFIED) | DI. FT. DWG. W-1760 AAR IDENT NO. 1242 | |
| DRAFT GEAR: MINER A-22-XL | FOR ROLLER BEARINGS ACF PART. NO. 21633-8 | DI. FT. DWG. W-1760 AAR IDENT NO. 1242 | |
| DRAFT GEAR ATTACHMENT: B-Y40 CS YORE | DI. FT. DWG. W-1859 AAR IDENT. NO. 304 | DI. FT. DWG. W-1760 AAR IDENT NO. 1242 | |
| ENDS: STANBAY 3E-9321-B (3/4") DWG. W-1577 | SPRINGS: AAR D-5 ROUTER, MINNER | DI. FT. DWG. W-1760 AAR IDENT NO. 1242 | |
| END SILL: ANGLE 5'X3" X 3/4" QHS. | CONS PER TRUCK | DI. FT. DWG. W-1760 AAR IDENT NO. 1242 | |
| FLOOR: 3/8" STEEL ASTM A-36 | | DI. FT. DWG. W-1760 AAR IDENT NO. 1242 | |

— 55-TON GONDOLA —



BRAKE DIAGRAM

GENERAL
 BUILDER :- SEE NOTE NO.1.
 YEAR BUILT :- 1925. REPAIRED :- 1940.
 BUILDER'S REF. - O.O.E-9905. SEE NOTE NO.1.
 R.R. SPEC. NO. - NONE.
 A.A.R. CLASS :- GB.
 NO. BUILT :- 199
 CAPY. - 1758 CU. FT.
 AVERAGE LT. WT. - 46000 LBS.
 " LOAD LIMIT :- 13,000 LBS.

BODY
 AIR BRAKE MFG. - N.Y.A.B. CO.
 " SCHEDULE :- AB.
 BODY CTR. PLT. - 11 3/4" FORGED STEEL.
 " SIDE BRG. - 3/8" HARDENED STEEL PLT.
 CENTER SILL :- C.B. 12" 40.3 LBS. B-112.
 " COVER PLT. - 21" x 5 1/16"
 " AREA :- (1172 x 2) = 23.44 SQ. IN.
 COUPLER :- E 6 3/4" SLOTTED. BOTTOM ROT. OP.
 " RELEASE DIG. - IMPERIAL ROTARY.
 DRAFT GEAR - MAINER A-105 2 1/2" TRAVEL.
 " ATTACHMENT - FARLOW 2-KEY.

ENDS :- "DREADNAUGHT"
 END SILL :- 9" 17.5 LBS. L
 FLOORING :- 5/16" PLT.
 GENERAL DRAWING :- SEE NOTE NO.1, DT&T V-2444
 HAND BRAKE :- "AJAX"
 SIDE SILL :- 4" x 3 1/2" x 9 1/16" L.
 " BRG. CENTERS :- 4'-2"

TRUCK
 BOLSTER :- A.S.F. PATT. NO. 7107.
 BRAKE BEAM :- A.A.A. NO. 2+ OR A.A.R. NO. 15.
 " SAFETY :- SEE NOTE NO. 2.
 CENTER PLATE :- INTEGRAL.
 GENERAL DRAWING :- 50007-B
 JOURNAL :- 5 1/2" x 10"
 " BOX :- INTEGRAL.
 SIDE BEARING :- "STUCKI" MALL. IRON.
 " FRAME :- A.S.F. PATT. NO. 7273-A.
 SPRINGS :- DRAWING 42691-A. COIL.
 TYPE OF TRUCK :- PRESSED SPRING PLANK.
 WHEELS :- 750 LB. CAST IRON.

WEIGHT OF BOLSTER :- 780 LBS.
 " " SIDE FRAME :- 630 LBS.
 " " ONE TRUCK :-

NOTE NO. 1 :- BUILT BY STANDARD STEEL CAR CO.
 REPAIRED BY D.T.&I. USING SIDES AND FLOOR
 TO GREENVILLE STEEL CAR COMPANY'S
 DRAWING 15872-B, THEIR REF. 00-284.
 NOTE NO. 2 :- 2 1/2" x 2 1/2" x 1/4" L & "ECONOMY"
 SAFETY GUARD.

CARS :- 6050-6249

D.T.&I.

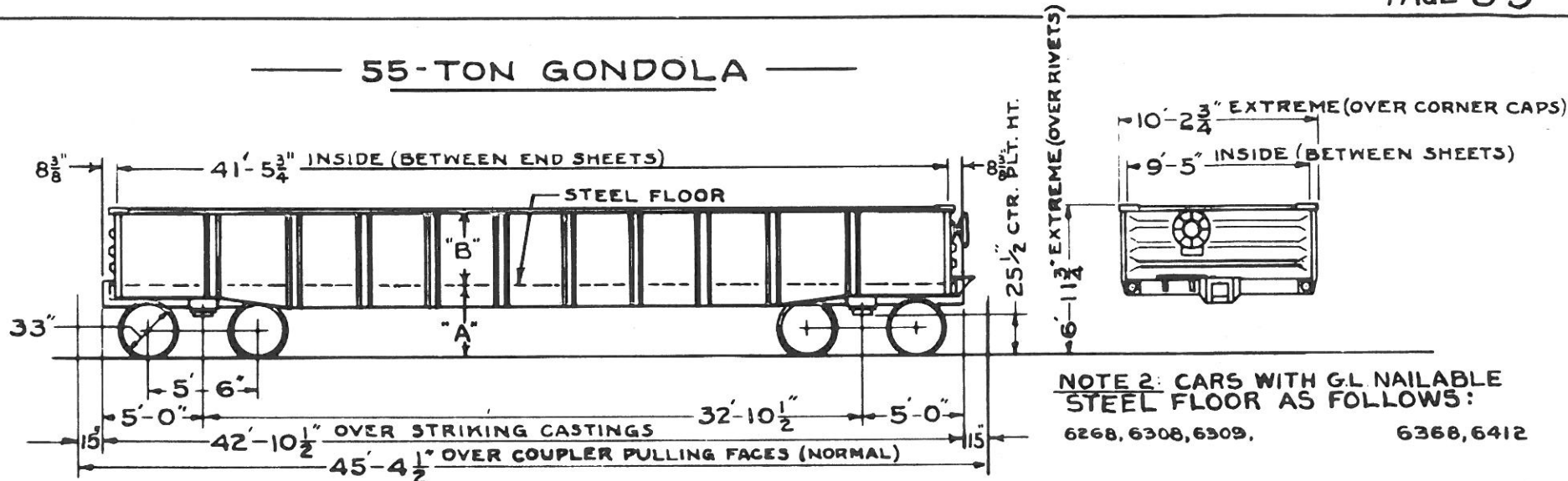
MOTIVE POWER DEPT.

9-1-42

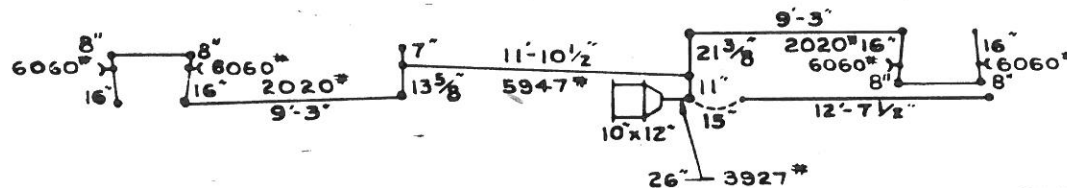
REVISION

8/53 2/57 1/61 1/63

55-TON GONDOLA



NOTE 2: CARS WITH G.L. NAILABLE STEEL FLOOR AS FOLLOWS:
6268, 6308, 6309, 6368, 6412

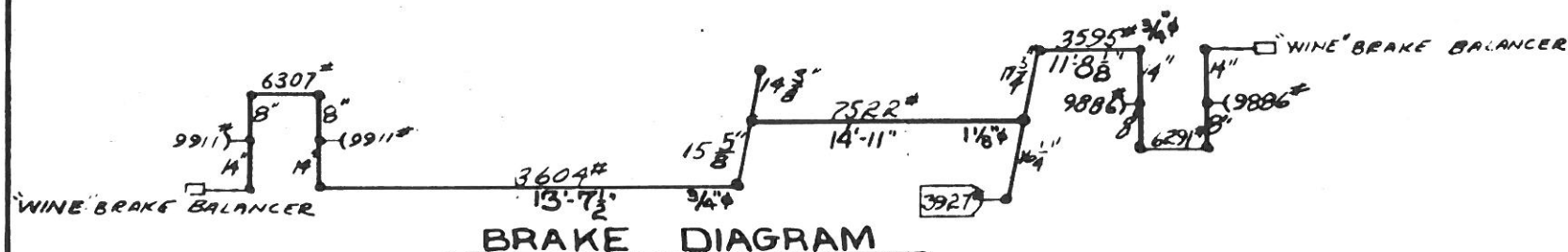
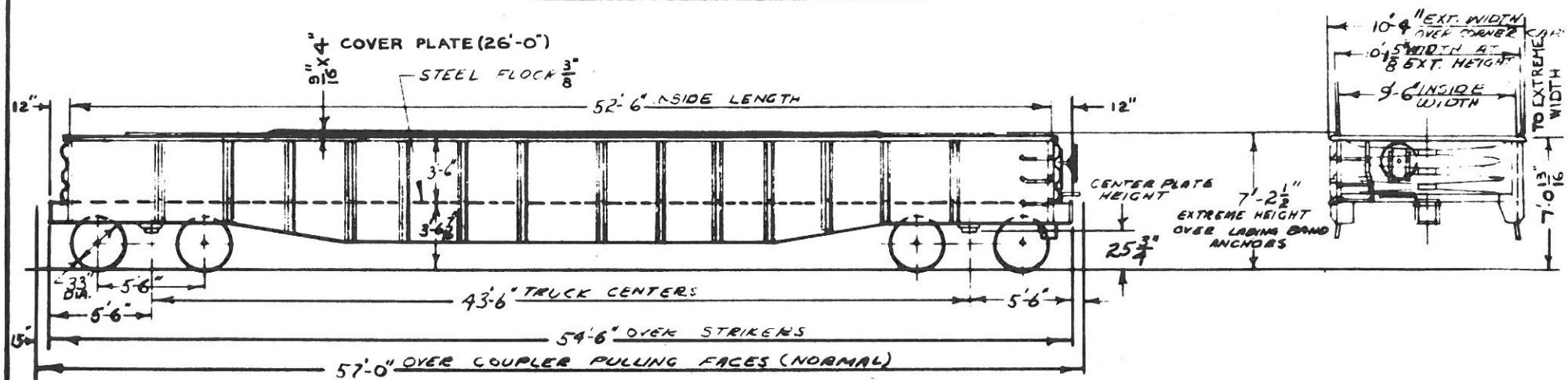


BRAKE DIAGRAM

| | "A" | "B" |
|--|--------------------------------------|--------------------------------------|
| NAILABLE STEEL FLR. CARS | 3'-8" | 3'-2 ¹³ / ₁₆ " |
| ⁵ / ₁₆ " STEEL PLATE FLR. CARS | 3'-4 ¹³ / ₁₆ " | 3'-6" |

| GENERAL | | TRUCK | |
|---|---|---|--|
| BUILDER:- STANDARD STEEL CAR CO. | ENDS:- "DREADNAUGHT." STD. RY. EQUIP. CO. | WEIGHT OF BOLSTER:- 780 LBS. | |
| YEAR BUILT:- 1925, HEAVY REPAIR 1946, 47, 48, 49 | END SILL:- 9"-17.5 LBS. LI | " " SIDE FRAME:- 630 LBS. | |
| BUILDER'S REF.- O.O. E-9905 | FLOORING:- N.S.F OR ⁵ / ₁₆ " STEEL PLATE, SEE NOTE 2: | " " ONE TRUCK:- | |
| R.R. SPEC. NO.- 116 | GENERAL DRAWING:- G.S.C. 19341, DT&I, V-2445 | NOTE NO. 1:- 2 1/2" x 2 1/2" x 1/4" L & "ECONOMY" SAFETY GUARD. | |
| A.A.R. CLASS:- GB. & GBS | HAND BRAKE:- EQUIPCO OR UNIVERSAL | | |
| NO. BUILT:- 201 | SIDE SILL:- 4" x 3 1/2" x 5/8" ANGLE | | |
| CAPY.- 1263 CU. FT. NSF CARS, - 1368 CU. FT. STL. PLT. F. CARS. | " BRG. CENTERS:- 4'-2" | | |
| AVERAGE LT. WT.- 46,300* NSF, - 43,700* ST. PLT. F. | | | |
| " LD. LMT.- 130,700* NSF, - 133,300* ST. PLT. F. | | | |
| BODY | | TRUCK | |
| AIR BRAKE MFG.- N.Y.A.B. CO. | BOLSTER:- A.S.F. PATT. NO. 7107. | CARS:- 6250-6450 | |
| " " SCHEDULE:- AB | BRAKE BEAM " SAFETY:- SEE NOTE NO. 1. | D.T. & I. | |
| BODY CTR. PLT.- 1 1/4" FORGED STEEL. | CENTER PLATE:- INTEGRAL. | MOTIVE POWER DEPT. 11-17-57 | |
| " " SIDE BRG.- 3/8" HARDENED STEEL PLT. | GENERAL DRAWING:- | REVISION | |
| CENTER SILL:- C.B. 12" 40.3 LBS. B-112 | JOURNAL:- 5 1/2" x 10" | RN 12/60 1/65 5/70 | |
| " " COVER PLT.- 21" x 5/16" | " " BOX:- INTEGRAL. | | |
| " " AREA:- (11.72 x 2) = 23.44 SQ. IN. | R.R. SPEC.- NONE | | |
| COUPLER:- "E" 6 1/2" x 8" SLOTTED. BOTTOM OP. | SIDE BRG.- "STUCKI" MALL. IRON. | | |
| " " RELEASE RIG.- IMPERIAL. ROTARY. | " " FRAME:- A.S.F. PATT. NO. 7273-A. | | |
| DRAFT GEAR:- WESTINGHOUSE NY-II-E OR NY-II-F | SPRINGS:- A.A.R. CLASS "D" 1 5/8" TRAVEL | | |
| " " ATTACHMENT:- "PARLOW" Z-KEY. | TYPE OF TRUCK:- DOUBLE TRUSS - SPRING PLANK | | |
| | WHEELS:- 750 LB. CAST IRON. | | |

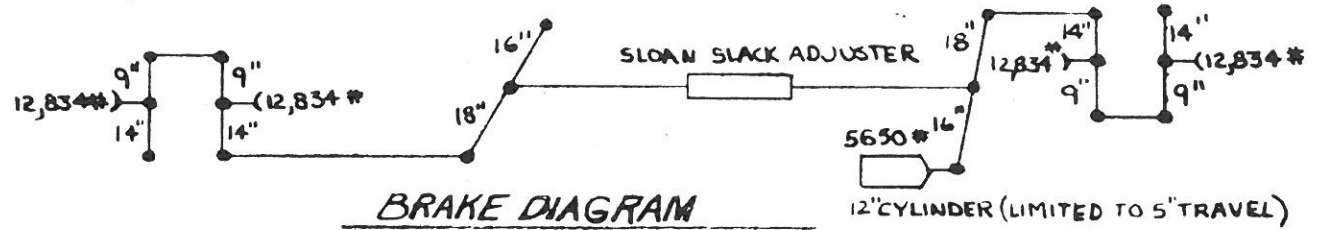
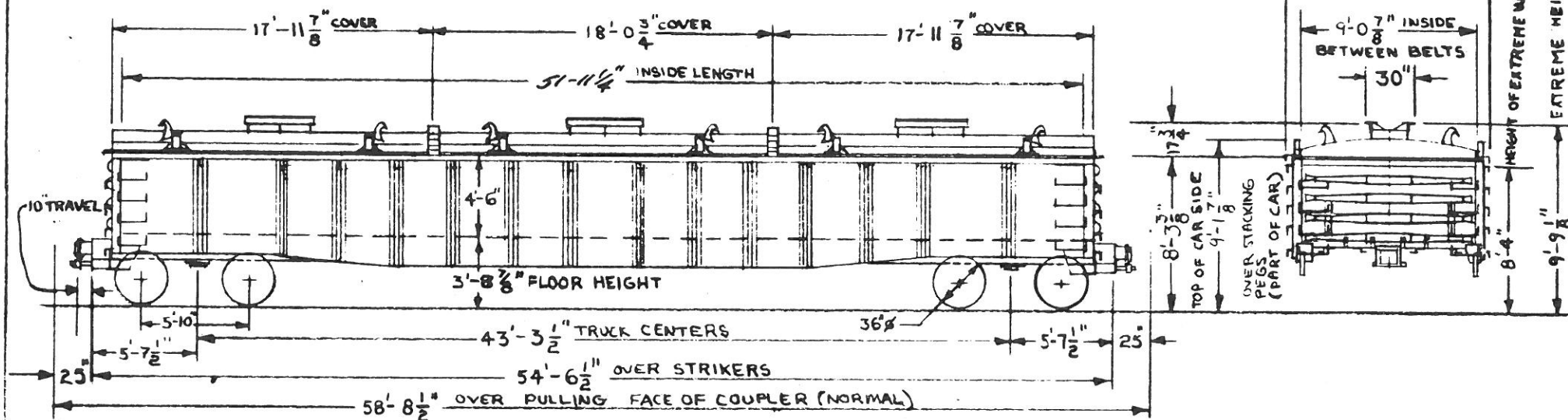
77-TON GONDOLA



BRAKE DIAGRAM

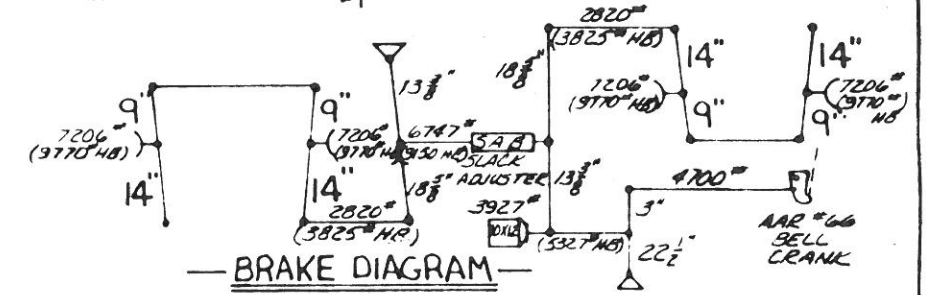
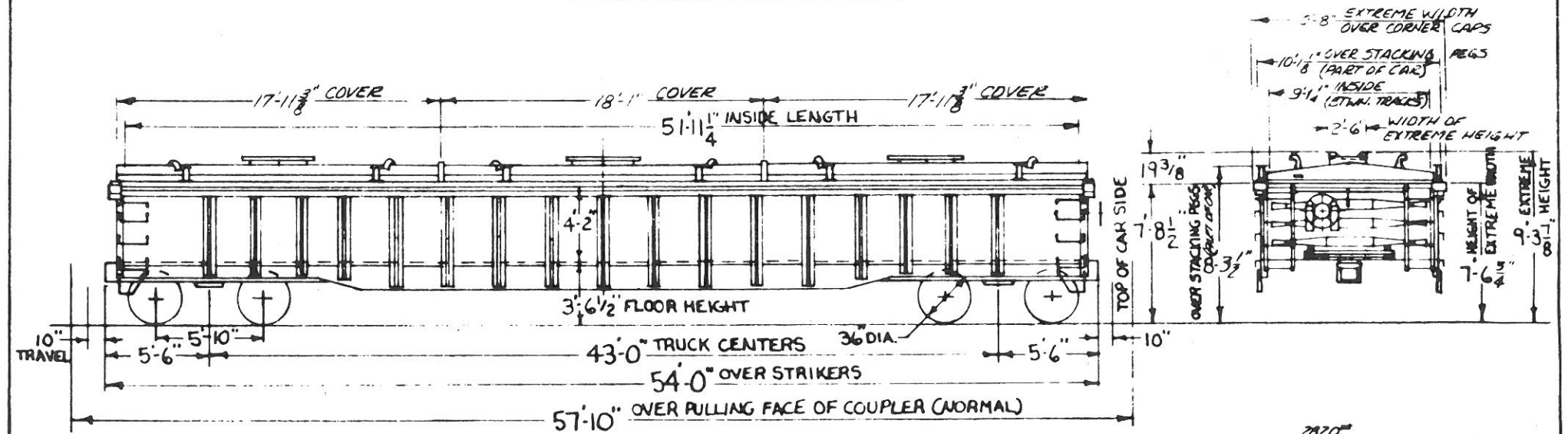
| GENERAL | | FLOORING R 3/8" FLANGED |
|---|--|---|
| BUILDER - PULLMAN STD CAR MFG CO. | GENERAL ARRGT. PULLMAN 523-F-4E DTIV-4198 | |
| YEAR BUILT - 1957 | HAND BRAKE VERTICAL-WHEEL TYPE-UNIVERSAL | |
| BUILDERS REF - A365 | LANDING BAND ANCHORS: WINE RY EQPT CO. | |
| AIR CLASS GB | SIDE SILL 6"x4"x3/8" L | |
| NO BUILT 100 | SIDE BEARING CENTERS 42" | |
| CAPACITY 1745 CUFT | TOP SIDE ANGLE 5"X4 1/2"X 1/16" BULB ANGLE | |
| AVG. LIGHT WT 55900# | | |
| AVG. LOAD LIMIT 16,4100# | | |
| BODY | | |
| AIR BRAKE MFG - WESTINGHOUSE | GENERAL DWG. AS 71407C DTH W-4071 | |
| AIR BRAKE SCHEDULE AB-1012 | JOURNAL 6"x11" BOX-INTEGRAL | |
| BODY CENTER PLATE - 13 3/4" DIA FORGED STL. | JOURNAL BEARING - 588 NOTE | |
| BODY SIDE BEARING HARD STL - WEDGE SHAPED | SIDE BEARING - SINGLE ROLLER-STUCKI | |
| CENTER SILL - 2-226 @ 42" ROLLED SECTS. | SIDE FRAME BAR CODE F7A-02ABUA REF. | |
| CENTER SILL AREA (TOTAL SECT) 24.29 SQ. IN. | PATT. NO. 21537 (DTH. W-5984) | |
| COUPLER TYPE - 6" DIA. 3/4" DIA. BOT. OPER. | SPRINGS 3 1/2" TRAIL MAG. 1010. FELT TRUCK | |
| COUPLER RELEASE RG. PULLMAN ROTARY | TYPE OF TRUCK TOT. ASIDE CONTROL | |
| DRAFT GEAR - CARONELL-WESTINGHOUSE PAT. F | SPRING PLANKLESS - EQPT FOR UNIT BRAKE BEAMS | |
| DRAFT GEAR ATTACH. EAST STL YARD | WHEELS 1 W. 1 W. 2 STL. | |
| ENDS - FIXED PULLMAN 312" R | HEIGHT OF ONE TANK 8280" | |
| END SILL 6 1/2" X 4" L | | |
| | | NOTE 2: CAR 9398 EQUIPPED WITH TIMKEN 6"x11" ROLLER BEARINGS, RAISED WHEEL SEAT AXLES, AND J-33. I-WEAR WROT STEEL WHEELS. ALL OTHER CARS EQUIPPED WITH PLAIN BEARINGS 6"x11" |
| | | CARS: 9300 - 9399 |
| | | DT & I |
| | | MOTIVE POWER DEPT. 1023-57 |
| | | REVISION |
| | | 1/60 1/65 1/66 5/70 8/71 |

90 TON GONDOLA



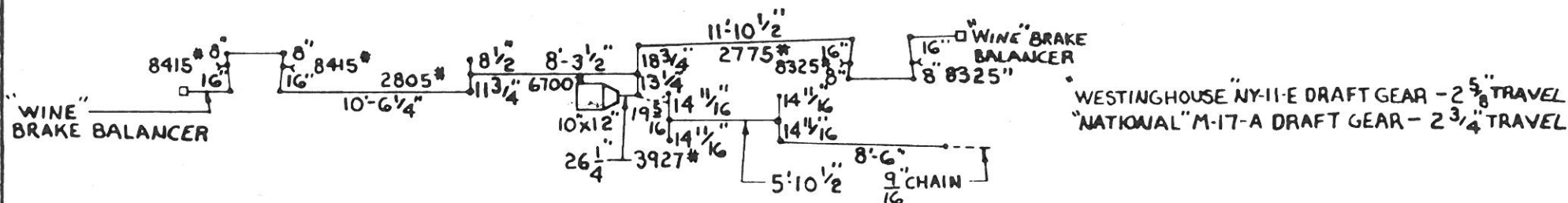
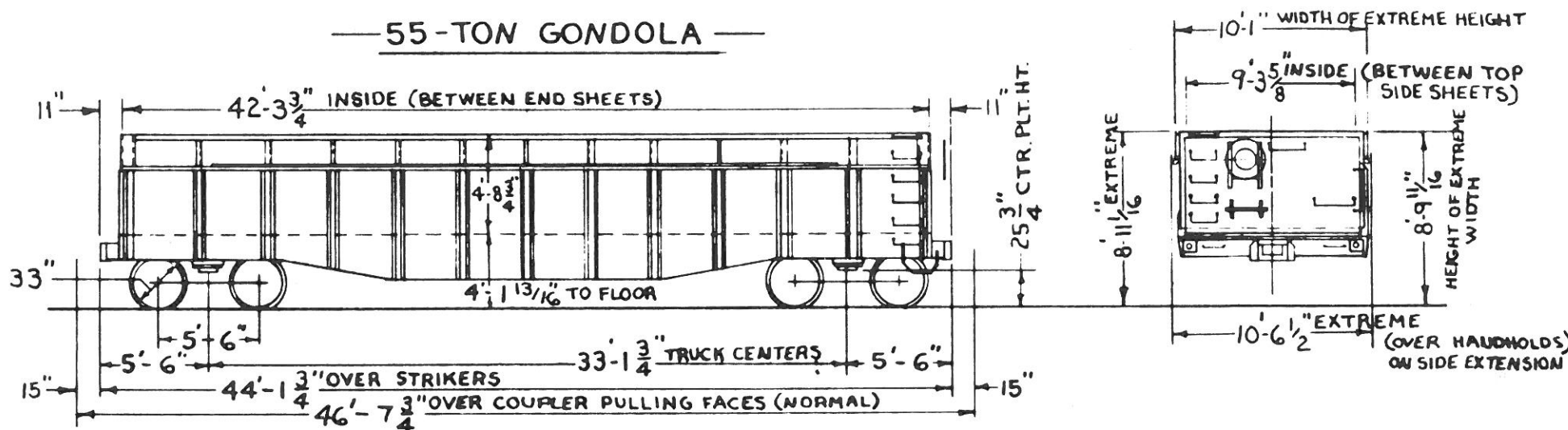
| | LESSOR | NAT'L. EQUIP LEASING LEASE 4213 TERM 9-14-64 |
|--|---|---|
| — GENERAL — | 4" TRAVEL IN BUFF, 1" TRAVEL IN DRAFT | JOURNAL BEARINGS: TIMKEN 6 1/2" X 12" 1-A |
| BUILDER: GREENVILLE STEEL CAR | ENDS: STANRAY 3E-22280-A (DWG. W-9629) A-572-50 | SIDE BEARINGS: STUCKI 6RS-B (DWG. 25817) |
| YEAR BUILT: 1969 | END BILL: 6" X 3 1/2" X 1/8" ANGLE | SIDE FRAMES: AARCODE F9C-038W-UA A6F |
| BUILDERS REF.: O. O. 969 | HORN: REPUBLIC-COMPOSITE-2 3/4" Y.P. WOOD (TREATED) | PAT. NO. 22052-AJ (DWG. W-9462) |
| AAR CLASS: GBSR | GENERAL ARRANGEMENT: GSC 33994-A | AAR IDENT. NO. 920 NARROW PEDESTAL |
| NO. BUILT: 10 | HAND BRAKE: AJAX 14665-B FGG | SIDE FRAME WEAR PLATES: BOLT ON TYPE (DWG. 2-9455) |
| CAPY.: 2228 CU. FT. | ROOF: SHUNK LL-5003 (REMOVABLE) 3 PIECE V-10891 | SPRINGS: AAR D-3 14 OUTER, 10 INNER COILS PER TRUCK |
| AVE. LT. WT.: 82,000 LBS. | SIDE SILL: 6" X 4" X 1/8" ANGLE A-572-50 | TYPE OF TRUCK: ASF RIDE CONTROL 6 1/2" X 12" STABILIZED, NARROW PEDESTAL ROLLER BEARING |
| AVE LOAD LIMIT: 181,000 LBS. | SIDE BEARING CENTERS: 4'-2" | WHEELS: 36" / WEAR WROUGHT STEEL H-36 |
| — BODY — | SLACK ADJUSTER: SLOAN | |
| AIR BRAKE MFG.: NEW YORK AIR BRAKE CO. | TOP END ANGLE: / | |
| AIR BRAKE SCHEDULE: ABD WITH 12 X 10 CYLINDER | TOP SIDE ANGLE: 5" X 4 1/2" X 1/16" BULL ANGLE A-36 WITH 5" X 5" X 1/2" ANGLE REINFORCEMENT | |
| BODY CENTER PLATE: 13 3/4" | — TRUCK — | |
| BODY SIDE BEARING: | BOLSTER: AARCODE 69A-1285-FN ASF PAT. NO. 22256-BR (DWG. W-9461) AAR IDENT. NO. 2117 ROLLER BEARING | CARS: 9500 - 9509 D.T. & I. |
| BULKHEADS: EVANS PRODUCTS (4 PER CAR) DB-208301 | BOLSTER WEAR PLATE: HORIZONTAL- VERTICAL - DWG. 2-9454 | MECHANICAL ENGINEERING DEPT 11-25-69 REVISION |
| CENTER SILL: 2, Z-26 @ 41.2# | BRAKE BEAM: #24 UNIT TYPE | |
| CENTER SILL AREA: 24.24 SQ. IN. | GENERAL DWG.: ASF 74441 - DT. W-9460 | |
| COUPLER: B-EG0A-HT 2 1/2" SHANK BOT. OPER. | JOURNALS: 6 1/2" X 12" ROLLER BEARING | |
| COUPLER RELEASE RIGGING: STANRAY 10-22293-A (DWG. X-9630) | | |
| CROSS OVER STEP: APEX 4530-A | | |
| CUSHIONING: FREIGHTMASTER END OF CAR | | |

88 TON GONDOLA



| | | | |
|---|--|---|--|
| - GENERAL - | | 10" TRAVEL IN BUFF, 7" TRAVEL IN DRAFT (DT#1 DWG. V-11083) | SIDE FRAMES: AAR CODE NONE B5C. PAT. NO. F-10021 (DWG. V-10949) AAR. IDENT. NO. B-5046 |
| BUILDER: GREENVILLE STEEL CAR | | ENDS: STANBAY 3E-23685-A, 1/4" A-44 (DT#1 DWG. W-10968) | NARROW PEDESTAL |
| YEAR BUILT: 1972 | | END SILL: 6" X 4" X 5/8" ANGLE ASTM A441 | |
| BUILDER'S REF.: 0.0.1055 | | FLOOR: PLATE 3/8" STEEL ASTM A-36 (.20% COPPER) | |
| AAR CLASS: GBSR | | GENERAL ARR'GT.: G5C 35680 - DT&I DWG. V-11064 | |
| NO. BUILT: 30 | | HANDBRAKE: MINER 24083-F-166 DT&I DWG. X-10934 | |
| CAPY.: 1973 CU. FT. | | ROOF: SHUNK LL-5006 (REMOVABLE) 3 PC. DT&I DWG. X-10941 | |
| AVE. LT. WT.: 85500 LBS. | | SIDE SILL: 18" @ 42.7#/FT. CHAN: DT# 283 DT&I DWG. A-441 | |
| AVE. LOAD LIMIT: 177,500 LBS. | | SLACK ADJUSTER: SAB 42512-B DT&I DWG. Y-10172 | |
| - BODY - | | TOP END ANGLE: T @ 17.63#/FT. CHANNEL ASTM A36-6" @ 15.3#/FT. CHANNEL | |
| AIR BRAKE MFG.: NEW YORK AIR BRAKE CO. | | TOP SIDE ANGLE: T @ 17.6#/FT. CHANNEL ASTM A36-6" @ 15.3#/FT. CHANNEL | |
| AIR BRAKE SCHEDULE: AAD 10 X 12 | | - TRUCK - | |
| BODY CENTER PLATE: 2 1/2" CAST INTEGRAL WITH 13" WEAR RING | | BOLSTER: AAR CODE: NONE, B5C PAT. NO. B-10182 | |
| BODY SIDE BEARING: PITT. FORGE SK-28154.001 DWG. X-9582 | | DWG. W-10948) AAR IDENT. NO. B-2040 BOLLER BEARING | |
| BULKHEADS: EVANS PRODUCTS DB-208301-C (4 PER CAR) | | BOLSTER WEAR PLATE: HORIZONTAL: E-8692 | |
| CENTER SILL: 2, C2-13 @ 41.2#/FT. ASTM A441 | | VERTICAL: Y-10326 | |
| CENTER SILL AREA: 24.24 SQ. IN. | | BRAKE BEAM: #18 UNIT (FOR COMP. SHDES) BB-252 | |
| COUPLER: EGOC-NI BOTT. OPER. DWG. X-10943 | | BRAKE SHDES: 2" HIGH FLEXION COMP. RFP V-174 | |
| COUPLER RELEASE RIGGING: STANBAY 10-23694-A (DT#1 DWG. Y-10967) | | GENERAL DWG. SCTS 4486 - DT&I DWG. W-10950 | |
| CROSSOVER STEP: MORTON C102-III - DWG. X-10951 | | JOURNALS: 6 V2" X 12" ROLLER BEARINGS | |
| CUSHIONING: KEYSTONE END OF CAR, DWG. T-D-1905-G | | JOURNAL BEARINGS: TIMKEN 6 1/2" X 12" - 1-A | |
| | | SIDE BEARINGS: STUCKI 688-B DWG. Y-5817 | |
| CARS: 9520-9549 | | | |
| D.T. & I. | | | |
| MECHANICAL ENGINEERING DEPT. 8-25-72 | | | |
| - REVISIONS - | | | |

— 55-TON GONDOLA —



BRAKE DIAGRAM

| | | | | | | | | | |
|---|---|---|--|--|--|--|--|--|--|
| — GENERAL — | | DRAFT GEAR ATTACHMENT: C.S. YOKE, B-Y40 | WHEELS: ONE WEAR WROT STEEL | | | | | | |
| BUILDER: GREENVILLE STEEL CAR CO. | YEAR BUILT: 1941 REWORKED - 1971 | ENDS: | WEIGHT OF BOLSTER: 900 LBS. | | | | | | |
| BUILDER'S REF.: 00-312 | A.A.R. CLASS: GB | END SILL: 12" @ 20.7 #/FT. CHANNEL | " " SIDE FRAME: 635 LBS. | | | | | | |
| NO. BUILT: ORIGINALLY GON. 7000-7299 | NO. BUILT: ORIGINALLY GON. 7000-7299 | FLOORING: 1/4" PLATE | " " ONE TRUCK: 7320 LBS. | | | | | | |
| CAPY: 1842 CU. FT. | AVERAGE LT. WT.: 66,600 LBS. | GENERAL DWG. DT&I V-8757 | NOTE NO. 1: WESTINGHOUSE "NY-11-E" ON 97103, "NATIONAL" M-17-A ON 97216 AND 97260. | | | | | | |
| " LOAD LIMIT: 110,400 LBS. | " | HAND BRAKE: "AJAX" | | | | | | | |
| | | SIDE SILL: FISH BELLY | | | | | | | |
| — BODY — | | — TRUCK — | | | | | | | |
| AIR BRAKE MFG. - N.Y.A.B. CO. | SCHEDULE - AB 1012 | BOLSTER: O.S.F. PATT. NO. 4957 (DT&I DWG. W-2828) | | | | | | | |
| BODY CTR PLATE: 1 1/4" FORGED STEEL | SIDE BRG.: 3/8" HARDENED STEEL PLT. | BRAKE BEAM: NO. 18 | | | | | | | |
| CENTER SILL: Z-26 @ 41.2 #/FT. | " AREA: 24.24 SQ. IN. | " SAFETY: "CRECO" FOUR POINT (DT&I DWG. X-2981) | | | | | | | |
| COUPLER: "E" 6 1/4" X 8" SLOTTED BOTTOM OP. | " RELEASE RIGGING: "IMPERIAL" ROTARY STANBAY DWG. 10-1571-B DT&I DWG. Y-10542 | GENERAL DWG. O.S.F. 204-LN-133 | CARS - 97103, 97216, 97260 | | | | | | |
| DRAFT GEAR: SEE NOTE 1 | | JOURNAL: 5 1/2" X 10" | | | | | | | |
| | | SIDE BEARING: "STUCKI" 656-C (DWG. Y-1470) | | | | | | | |
| | | SIDE FRAME: O.S.F. PATT. NO. 4417 (DT&I DWG. W-10416) | | | | | | | |
| | | SPRINGS: A.A.R. D-21518 TRAVEL BOUTER & BINNER COILS/TRUCK | | | | | | | |
| | | TYPE OF TRUCK: SPRING PLANKLESS WITH BRACKET FOR BRAKE BEAM SAFETY | | | | | | | |
| | | CAST INTEGRAL AND "MOBIL" RETAINER | | | | | | | |
| | | D.T.&I. MECHANICAL ENGINEERING DEPT. 9-23-71 | | | | | | | |
| | | — REVISION — | | | | | | | |
| | | <table border="1" style="width: 100%; height: 20px;"> <tr> <td></td> <td></td> <td></td> <td></td> <td></td> <td></td> </tr> </table> | | | | | | | |
| | | | | | | | | | |