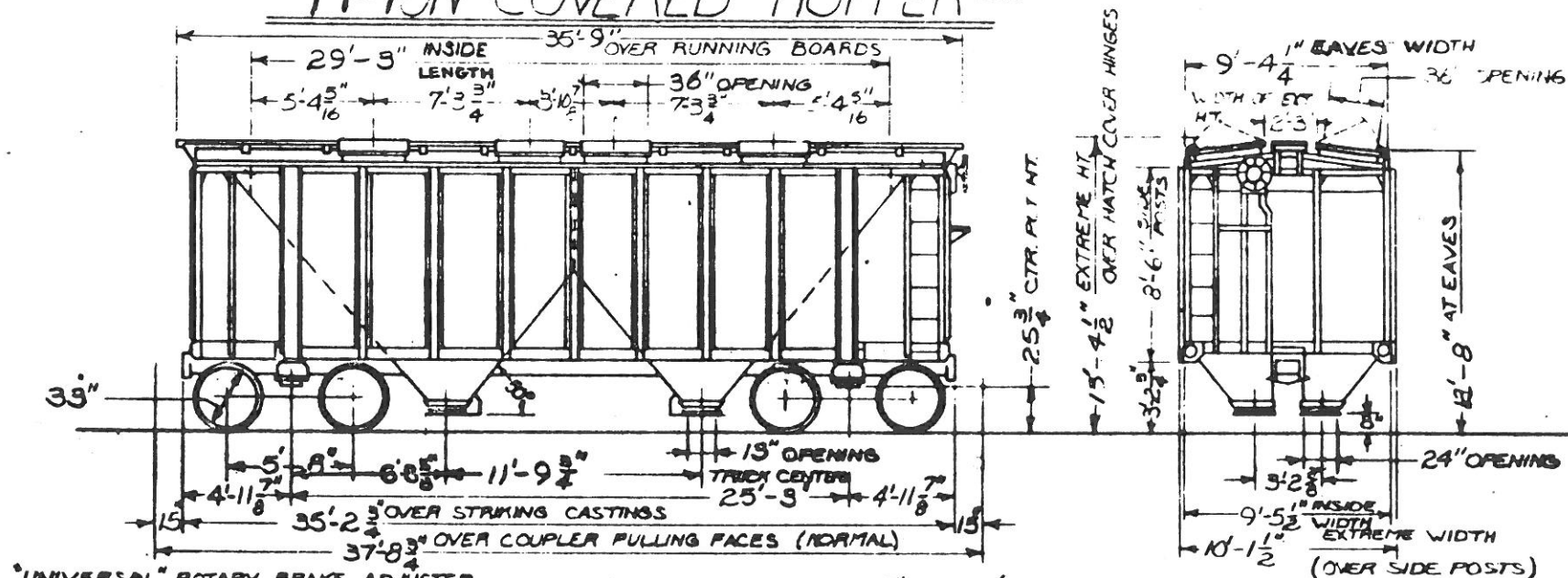


# -77-TON COVERED HOPPER-



PULLMAN VIBRATOR ATTACHMENTS  
PATT. NO. 5-7319-4 PER CAR

**BRAKE DIAGRAM**

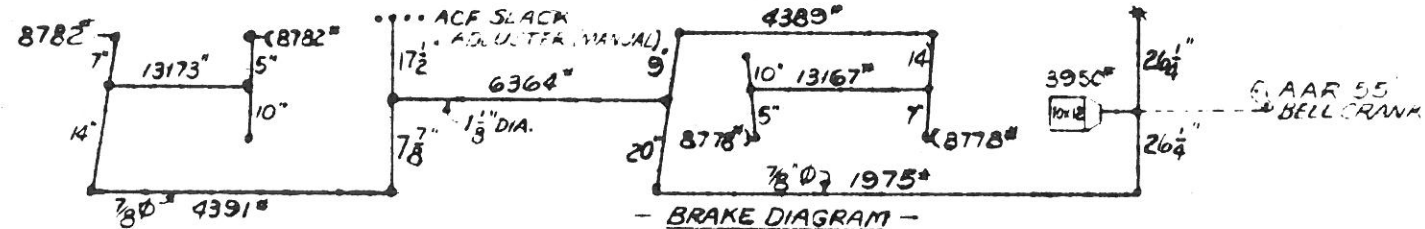
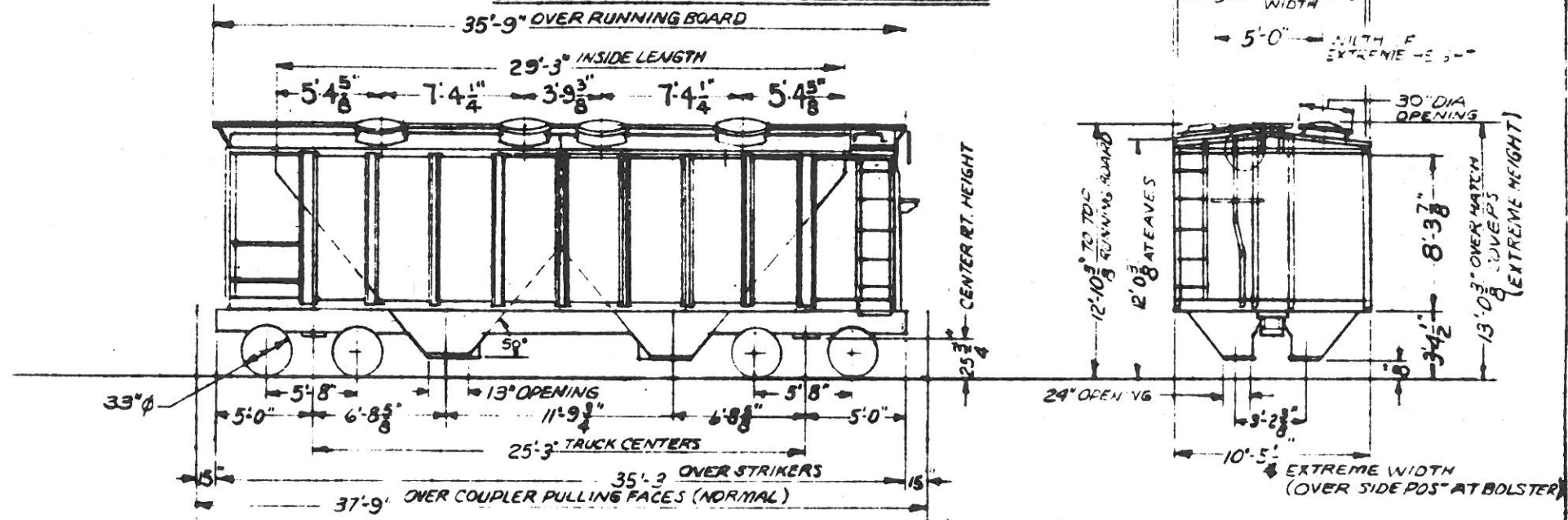
- GENERAL -		- TRUCK -
BUILDER: PULLMAN-STANDARD CAR MFG. CO.	DOOR FIXTURES: HOPPER-ENTERPRISE-SCHEDULE 1887	SIDE FRAME (CONT'D): A.A.R. CODE F7A-CIAB-UA (MFG. 576)
YEAR BUILT: 1949	DOOR FIXTURES: ROOF-PULLMAN	A.A.R. IDEN. NO. 616 (DT/1 DWG. W. 4964)
BUILDERS REF: 5947 (WABASH SPEC. CS-271)	DRAFT GEARS: CARD-WEST NY-11-F	SPRINGS: 2 1/2" TRAVEL A.A.R. D-3
A.A.R. CLASS: LO.	DRAFT GEAR ATTACHMENT: CAST STEEL YOKE (8Y40)	14 OUTER, 2 INNER COILS PER TRUCK
NO. BUILT: 60	END SILL: 9" x 15 1/2" C.B. CHANNEL	TRUCK WEIGHT: 8250 LBS.
CAPACITY: 1950 CU. FT.	GENERAL DWG: PSC 68986-A (DT/1 DWG. V-6595)	TYPE OF TRUCK: 70 TON A-3 RIDE CONTROL
AVERAGE LT. WT.: 51,000 LBS.	HANDBRAKE: UNIVERSAL 5700-6232-A	SPRING PLANKNESS EQUIPPED FOR UNIT BRAKE BEAMS
AVERAGE LOAD LIMIT: 169,000 LBS.	RUNNING BOARD: APEX (DT/1 DWG. V-7103)	WHEELS: 33" WEAR WROT STEEL, B-33
	SIDE BEARING CENTERS: 4'-2"	
	SIDE PLATE: 4 1/2" @ 10.3 1/2" ZEE	
	SIDE SILL: 6" x 3 1/2" x 3/8" ANGLE	
- BODY -		- TRUCK -
AIR BRAKE MFG:		BOLSTER: ASF PATTERN NO. 21704-U
AIR BRAKE SCHEDULE: AB1012		(DT/1 DWG. NO. W7116) A.A.R. IDEN. NO. 1227
BODY CENTER PLATE: 13 1/2" DROP FORGED		A.A.R. CODE: B7A-OIEE-MN
BODY SIDE BEARING:		BRAKE BEAM: UNIT #18 (CAST STEEL)
CENTER SILL: 2-12" x 35 1/2" C.B. CHANNELS		GENERAL DWG: A.S.F. 69689-A (DT/1 DWG. W-1099)
WITH 1/2" x 12 1/2" TOP COVER PLATE		JOURNALS: 6" x 11"
CENTER SILL AREA: 25.28 sq. in.		SIDE BEARINGS: MCDCAST INTEGRAL JOINT (MCD57)
COUPLER: TYPE E-60 6" (18") SLOTTED BOTTOM OPERATED		SIDE FRAME: A.S.F. PATTERN 21004-3 (ORIGINAL)
COUPLER RELEASE MFG: STD. RY. EQUIP. IL-7233		ORIGINAL WITHOUT WASTE RETAINER PDS
DOORS: HOPPER-ENTERPRISE		
ROOF: PULLMAN		

CARS: 1-60

ANN ARBOR RAILROAD

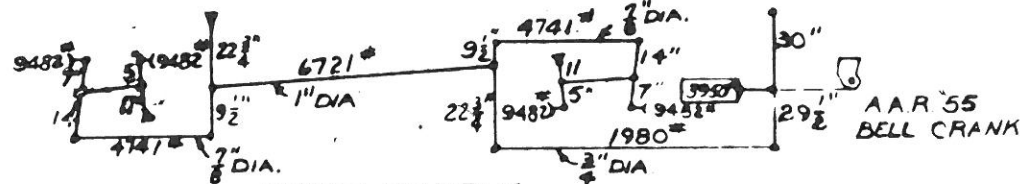
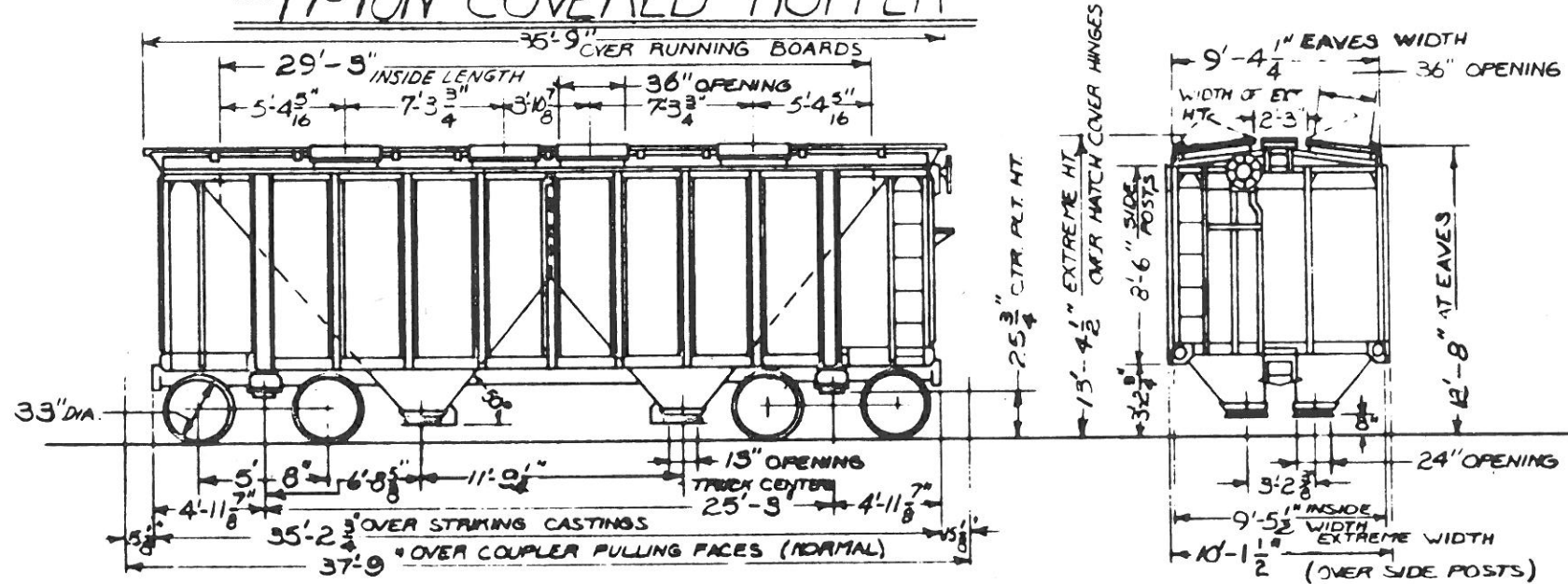
MECHANICAL ENGINEERING DEPT. 11-2-64  
- REVISIONS -

# - 77 TON COVERED HOPPER -



- GENERAL -		- BODY -	- TRUCK -	
BUILDER: AMERICAN CAR & FOUNDRY (BERWICK)	DRAFT GEAR: CARDWELL-WESTINGHOUSE NY-11-F	AIR BRAKE MFG: WESTINGHOUSE AIR BRAKE CO.	BOLSTER: SYM-WAYNE PATT. 80-7168	SIDE FRAME: SYM-WAYNE PATTERN TF-7159
YEAR BUILT: 1958	DRAFT GEAR ATTACHMENTS: CAST STEEL YOKE (B-Y40)	AIR BRAKE SCHEDULE: AB 1012	(D.T.B. DWG. W-1120) A.A.R. IDENT. NO.	NARROW PEDESTAL JAW
BUILDERS REF: 01-5176-M	END SILL: 6" X 3 1/2" X 3/8" ANGLE	BODY CENTER PLATE: 13 3/4" DROP FORGED	A.A.R. CODE 87A-OIER-BN	A.A.R. CODE F7A-DIAN-UA
A.A.R. CLASS: LO	GENERAL DWG:	BODY SIDE BEARINGS: 3/8" X 4" X 1" 2" PLATE	BRAKE BEAM: UNIT #18 (CAST STEEL)	A.A.R. IDENT. NO. 755 D.T. & I DWG. W-5536
NO. BUILT: 50	HAND BRAKE: AJAX 14377-K	CENTER SILL AREA: 30.12 SQ. IN.	GENERAL DWG:	SPRINGS: 2 1/2" TRAVEL A.A.R. D-3 14 OUTER
CAPY: 2006 CU. FT.	RUNNING BOARD: APEX STEEL (3193-A)	COUPLER: "E" 6 1/2" X 8" SLOTTED BOTTOM OPERATED	JOURNALS: 6" X 11" ROLLER BEARING	AND 4 INNER COILS PER TRUCK
AVER. LT. WT. 51,400 LBS	SIDE BEARING CENTERS: 4'-2"	COUPLER RELEASE RIGGING: STD. RY. EQUIP. CO. (U-15B13)	JOURNAL BEARINGS: HYATT 6" X 11" HY-ROLL	TYPE OF TRUCK: 70 TON A-3 RIDE CONTROL
AVER. LOAD LIMIT: 168,600 LBS.	SIDE PLATE: 4" X 3 1/2" X 3/8" BULB ANGLE	DOORS: HOPPER-ENTERPRISE	JOURNAL BEARING RETAINER:	EQUIPPED FOR ROLLER BEARINGS
	SIDE SILL: 5" X 3 1/2" X 3/8" ANGLE	ROOF: ACF	SIDE BEARING: STUCKI 656-C	SPRING PLANKLESS UNIT BEAMS.
		DOOR FIXTURES: HOPPER-ENTERPRISE SCHEDULE 2253-B		WHEELS: 1 WEAR WROT STEEL B-33
		ROOF: ACF		WEIGHT OF TRUCK: 8300 LBS.
				<b>CARS: 136-185</b>
				<b>ANN ARBOR RAILROAD</b>
				MECHANICAL ENGINEERING DEPT. 12-22-69
				REVISION
				7/10

# -77-TON COVERED HOPPER-

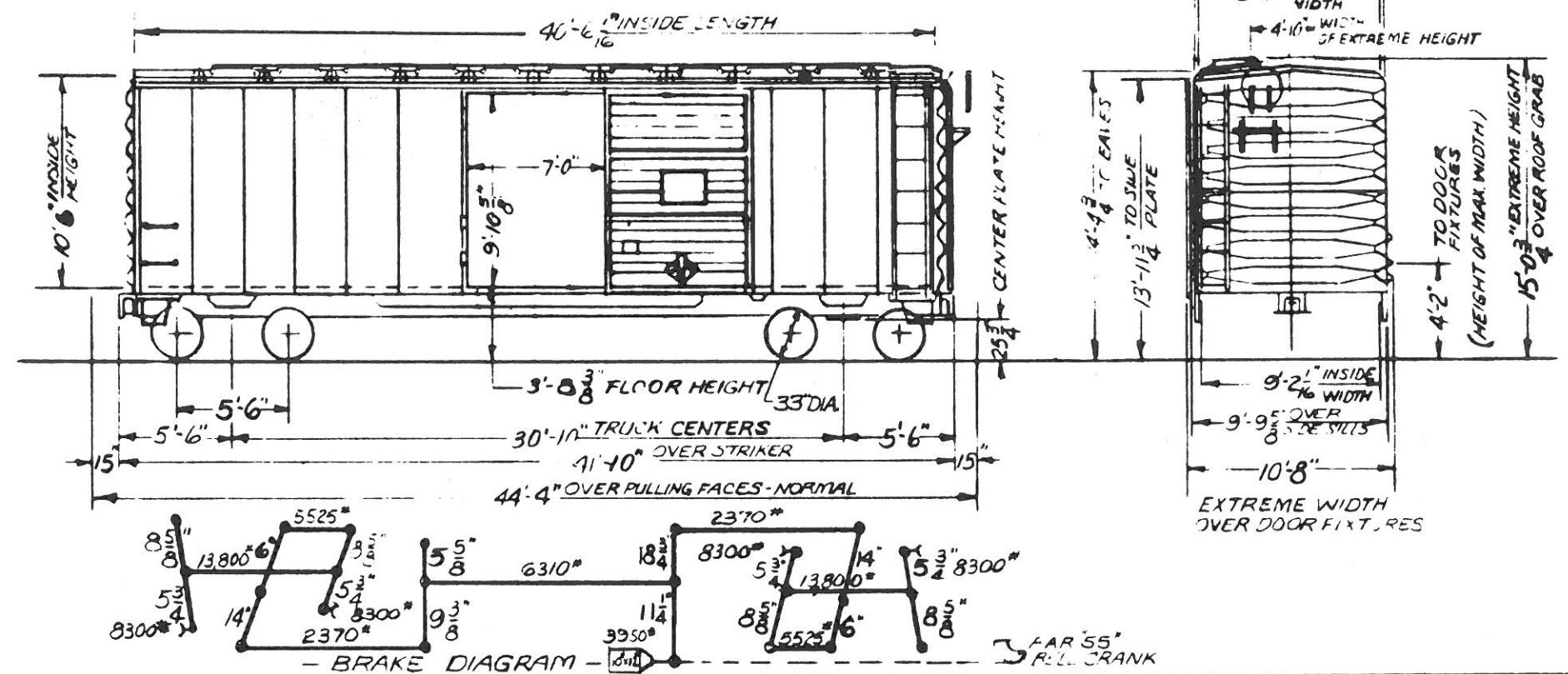


<b>- GENERAL -</b>	DOOR FIXTURES: HOPPER-ENTERPRISE-SCHEDULE 200A	SIDE FRAME (CONTD): A.A.R. CODE F7A-01AB-UA(1950)
BUILDER: PULLMAN-STANDARD CAR MFG. CO.	DOOR FIXTURES: ROOF-PULLMAN	A.A.R. IDEN. NO. 646 (DTL. DWG. W. 4964)
YEAR BUILT: 1950	DRAFT GEARS	SPRINGS: 2 <sup>1</sup> / <sub>2</sub> " TRAVEL A.A.R. D-3
BUILDERS REF: 5974 (WABASH SPEC. CS-27)	DRAFT GEAR ATTACHMENT: CAST STEEL YOKE (BYC)	14 OUTER, 2 INNER COILS PER TRUCK
A.A.R. CLASS: LO	END SILL: 9" x 18 <sup>1</sup> / <sub>2</sub> " STD. CHANNEL	TRUCK WEIGHT: 8250 LBS.
NO BUILT: 75	GENERAL DWG: RSC, 517-F-B-E (DTL. DWG.)	TYPE OF TRUCK: 70 TON A-3 RIDE CONTROL
CAPACITY 1953 CU.FT.	HANDBRAKE:	SPRING PLANKNESS EQUIPPED FOR
AVERAGE LT.WT: 8200 LBS.	RUNNING BOARD: APEX (DTL. DWG. V-7103)	UNIT BRAKE BEAMS
AVERAGE LOAD LIMIT: 169,000 LBS.	SIDE BEARING CENTERS: 4'-2"	WHEELS: 33" (WEAR WROT STEEL, B-33)
	SIDE PLATE: 4 <sup>1</sup> / <sub>2</sub> " @ 10.3 <sup>1</sup> / <sub>2</sub> " ZEE	
	SIDE SILL: 6" x 3 <sup>1</sup> / <sub>2</sub> " x 3 <sup>1</sup> / <sub>2</sub> " ANGLE	
<b>- BODY -</b>		
AIR BRAKE MFG: WESTINGHOUSE AIR BRAKE CO.		
AIR BRAKE SCHEDULE: AB1012	<b>- TRUCK -</b>	
BODY CENTER PLATE: 13 <sup>1</sup> / <sub>2</sub> " DROP FORGED	BOLSTER: ASF PATTERN NO. 21704-AK	<b>CARS: 61-135</b>
BODY SIDE BEARING: CARNEGIE-ILL. SECTION M-419B	(DTL. DWG. NO. W-4658) A.A.R. IDEN. NO. 1227	
CENTER SILL: 2-12" x 35 <sup>1</sup> / <sub>2</sub> " C.B. CHANNELS	A.A.R. CODE: B7A-01EB-BN	ANN ARBOR RAILROAD
WITH 3 <sup>1</sup> / <sub>2</sub> " x 12 <sup>1</sup> / <sub>2</sub> " TOP COVER PLATE	BRAKE BEAM: UNIT #18 (CAST STEEL)	
CENTER SILL AREA: 25.28 SQ. IN.	GENERAL DWG:	
COUPLER: TYPE E-60 6 <sup>1</sup> / <sub>2</sub> " x 8" SLOTTED BOTTOM OPERATED	JOURNALS: 6" x 11"	MECHANICAL ENGINEERING DEPT. 11-2-64
COUPLER RELEASE RIGGING: STD. RY EQUIP (U.S. PAT. 1,488,111)	SIDE BEARINGS:	- REVISIONS -
DOORS: HOPPER-ENTERPRISE	SIDE FRAME: A.S.F. PATTERN 21804-F	
ROOF - PULLMAN	ORIGINAL WITHOUT WASTE RETAINER RES	





- 55 TON BOX CAR -



- GENERAL -		END SILL: 6" x 3 1/2" x 5/16" ANGLE	AAR IDENT NO 289 D.T. & I DWG. W-3444
BUILDER: AMERICAN CAR FOUNDRY (BERWICK)	FLOORING: 2 3/8" x 5 1/16" OR 7" T&G	FLOORING: 2 3/8" x 5 1/16" OR 7" T&G	SPRINGS: 3 1/16" TRAVEL A.A.R. D-5 10 INNER AND 10 OUTER COILS PER TRUCK
YEAR BUILT: 1951	GENERAL DRAWING: ACF 620-5024-J	GENERAL DRAWING: ACF 620-5024-J	TYPE OF TRUCK: A-3 RIDE CONTROL SPRING
BUILDERS REF. 01-3494	HAND BRAKE: UNIVERSAL 5700-6232-A	HAND BRAKE: UNIVERSAL 5700-6232-A	PLANKLESS EQUIPPED FOR UNIT
AAR CLASS: XM	LINING END: 2 5/32" T&G	LINING END: 2 5/32" T&G	BRAKE BEAMS
NO. BUILT: 100	SIDE: 2 5/32" T&G	SIDE: 2 5/32" T&G	WHEELS: 1 WEAR WROT STEEL A-33
CAPY: 3898 CU. FT.	ROOF: STD. RY. EQUIPMENT	ROOF: STD. RY. EQUIPMENT	
AVE. LT. WT: 46,700 LBS	RUNNING BOARD: APEX STEEL 2160-A	RUNNING BOARD: APEX STEEL 2160-A	
AVE. LOAD LIMIT: 180,300 LBS.	SIDE BEARING CENTERS: 4'-2"	SIDE BEARING CENTERS: 4'-2"	
- BODY -	SIDE PLATE: ROLLED 2" U.S. STEEL SEC. 5-28J	SIDE PLATE: ROLLED 2" U.S. STEEL SEC. 5-28J	
AIR BRAKES MFG.: WESTINGHOUSE AIR BRAKE CO.	SIDE SILL: 6" x 3 1/2" x 5/16" ANGLE	SIDE SILL: 6" x 3 1/2" x 5/16" ANGLE	
SCHEDULE: AB 1012	SIDE SHEATHING: .10" H.R.S. WELDED	SIDE SHEATHING: .10" H.R.S. WELDED	
BODY CENTER PLATE: 11 3/4" DROP FORGED	- TRUCK -		
BODY SIDE BEARINGS: DROP FORGED (ACF 220-5029)	BOLSTER: A.S.F. PATT. NO. 21629 BP	BOLSTER: A.S.F. PATT. NO. 21629 BP	
CENTER SILL: 2,36.2"/FT ROLLED ZEE SECTIONS	D.T. & I DWG. NO.	D.T. & I DWG. NO.	AAR IDENT NO
CENTER SILL AREA: 21.3 SQ IN.	A.A.R. CODE B5A-03EG-DH	A.A.R. CODE B5A-03EG-DH	CARS: 1000-1099
COUPLER: E, 6 1/4" x 8" SLOTTED, BOTTOM OPERATED	BRAKE BEAM: UNIT #18	BRAKE BEAM: UNIT #18	ANN ARBOR RAILROAD
COUPLER RELEASE RIGGING: STD. RY. EQUIPMENT (U-329-A)	GENERAL DRAWING: A.S.F. 70041-A, D.T. & I DWG	GENERAL DRAWING: A.S.F. 70041-A, D.T. & I DWG	MECHANICAL ENGINEERING DEPT. 11-18-64
DOORS: YOUNGSTOWN TYPE 46 D.T. & I DWG V-7060	JOURNAL: 5 1/2" x 10"	JOURNAL: 5 1/2" x 10"	- REVISIONS -
DOOR FIXTURES: CAMEL ROLLER LIFT	SIDE BEARING: ACF 120-5070 (FRICTION TYPE)	SIDE BEARING: ACF 120-5070 (FRICTION TYPE)	
DRAFT GEAR: MINER A-22-XL	SIDE FRAME: A.S.F. PATT. NO. 21728J WITH WASTE	SIDE FRAME: A.S.F. PATT. NO. 21728J WITH WASTE	
DRAFT GEAR ATTACHMENT: GRADE B C.S. YOKE (Y-40)	RETAINER RIBS: INTEGRAL BOX, A.A.R.	RETAINER RIBS: INTEGRAL BOX, A.A.R.	
ENDS: STD. RY. EQUIP TOP SHEET 3/4", BOT. SHEET 1/4"	CODE FSA-02AB-UA	CODE FSA-02AB-UA	



