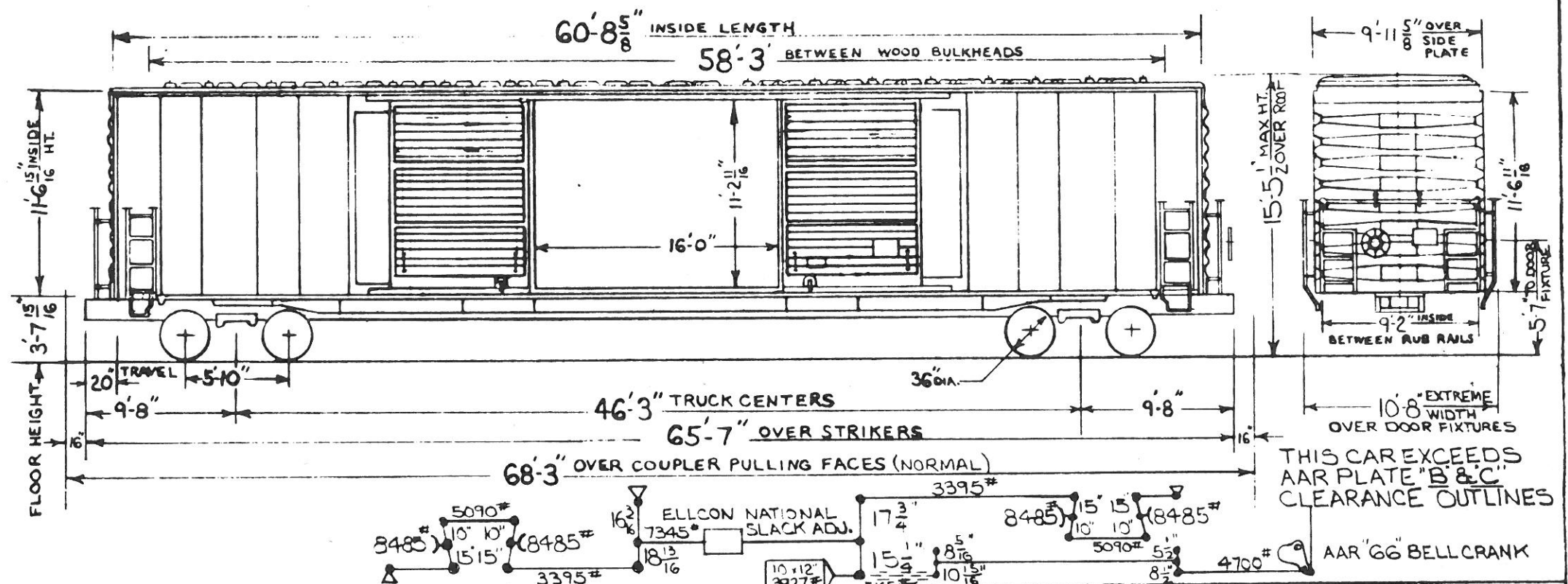
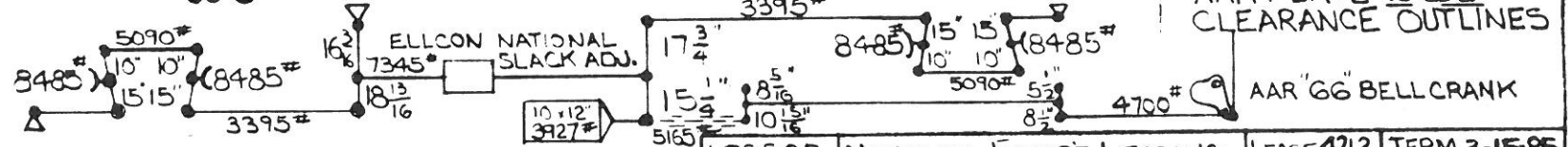


— 90 TON BOX —



THIS CAR EXCEEDS
AAR PLATE "B & C"
CLEARANCE OUTLINES



<p align="center">— GENERAL —</p> <p>BUILDER: AMERICAN CAR & FOUNDRY (ST. LOUIS)</p> <p>YEAR BUILT: 1970</p> <p>BUILDERS REF: 11-06579</p> <p>A.A.R. CODE: XP</p> <p>NO. BUILT: 12</p> <p>CAPACITY: 6180 CU. FT.</p> <p>AVE. LT. WT.: 79,000 LB.'S</p> <p>AVE. LOAD LIMIT: 184,000 LB.'S</p>		<p>CUSHIONING DEVICE: ACF FREIGHTSAVER 20B 20" TRAVEL</p> <p>DOORS AND FIXTURES: YOUNGSTOWN - FRG3</p> <p>YOUNGSTOWN DWG. 14345-H (D.T.&I. DWG. V-9682)</p> <p>DRAFT GEAR: MINER A-22-XL</p> <p>DRAFT GEAR ATTACHMENTS: GRADE "B" CAST STEEL FORGE</p> <p>ENDS: STANRAY SE-21441-E (LINE 3) TOP SHEET 3/16"</p> <p>BOTTOM SHEET 1/2" (D.T.&I. DWG.)</p> <p>END SILL: 6" x 3 1/2" x 3/8" ANGLE</p> <p>FLOOR: 1 3/4" NATIONAL STEEL (D.T.&I. DWG. V-9768)</p> <p>GENERAL DWG.: G-C-8250 (D.T.&I. DWG. V-9819)</p> <p>HAND BRAKE: ELLCON NAT'L 1600-2</p> <p>LINING: END: NONE</p> <p>SIDE: NONE</p> <p>ROOF: STANRAY 3R-21442-A (D.T.&I. DWG.)</p> <p>SIDE PLATE: 3 3/8" SIDE PLATE 2 @ 8.3' FT. ASTM A-36</p> <p>SIDE SILL: 6" x 6" x 3/8" ANGLE</p> <p>SIDE SILL REINFORCEMENT: 1/2" FABRICATED</p>	<p>LESSOR NATIONAL EQUIPT. LEASING LEASE 4212 TERM 3-1585</p> <p>BRAKE SHOES: 2" HIGH FRICTION ABEX "COMET" H4</p> <p>GENERAL DWG: ASF 74383-A (D.T.&I. DWG. W-9774)</p> <p>JOURNALS: 6 1/2" x 12" ROLLER BEARINGS</p> <p>JOURNAL BEARINGS: BRENCO - 5A</p> <p>SIDE BEARINGS: STUCKI 688-B DOUBLE ROLLER (DWG Z-5817)</p> <p>SIDE FRAME: A.A.R. CODE - F96-038N-UA ASF. PATT. NO. 22052-AJ (D.T.&I. DWG. W-9462)</p> <p>A.A.R. IDENT. NO. 920 NARROW PEDESTAL</p> <p>SIDE FRAME WEAR PLATES: BOLT ON TYPE DWG Z-9455</p> <p>SPRINGS: A.A.R. D-5 & D-6; 14 OUTER AND 14 INNER D-5</p> <p>SPRINGS AND 4 INNER D-6 SPRINGS PER TRUCK</p> <p>TYPE OF TRUCK: ASF RIDE CONTROL 6 1/2" x 12" STABILIZED NARROW PEDESTAL ROLLER BEARING</p> <p>WHEELS: 36" I WEAR WROT STEEL H-36</p>
<p align="center">— BODY —</p> <p>AIR BRAKE MFG: WESTINGHOUSE</p> <p>AIR BRAKE SCHEDULE: ABD VALVE 10X12 CYLINDER WITH 2" COMPOSITION BRAKE SHOES (HIGH FRICT. ON)</p> <p>BODY CENTER PLATE: 13 3/4" FORGED (DWG. W-9844)</p> <p>BODY SIDE BEARING: ROLLED SECTION C-1050</p> <p>CENTER SILL: SLIDING - 2 Z-26 @ 41.2' FT. ASTM 572-503 STATIONARY - 3/8" PRESSED PLATE</p> <p>CENTER SILL AREA: SLIDING - 24.24 SQ. IN.</p> <p align="center">— TRUCK —</p> <p>COUPLER: B-EG8HT5, 43" PULLING FACE TO PIN</p> <p>COUPLER RELEASE RIGGING: STANRAY 4U-18872-L LINE 7 (D.T.&I. DWG.)</p> <p>CROSSOVER STEP: APEX 4412 (D.T.&I. DWG. X-9675)</p>		<p align="center">— TRUCK —</p> <p>BOLSTER: A.A.R. CODE - NONE ASF. PATT. NO. 22856-BX (D.T.&I. DWG. W-9775) A.A.R. IDENT. NO. 2117</p> <p>BOLSTER CENTER PLATE WEAR PLATE: HORIZ: DWG Z-8672 VERTICAL: DWG Y-9450</p> <p>BRAKE BEAM: 781 UNIT (FOR COMPOSITION SHOES) DWG X-9674</p>	<p align="center">CARS: 25800-25811</p> <p align="center">D.T. & I.</p> <p align="center">MECHANICAL ENGINEERING DEPT.</p> <p align="center">— REVISIONS —</p>

CARS: 25800-25811

D.T. & I.

MECHANICAL ENGINEERING DEPT.

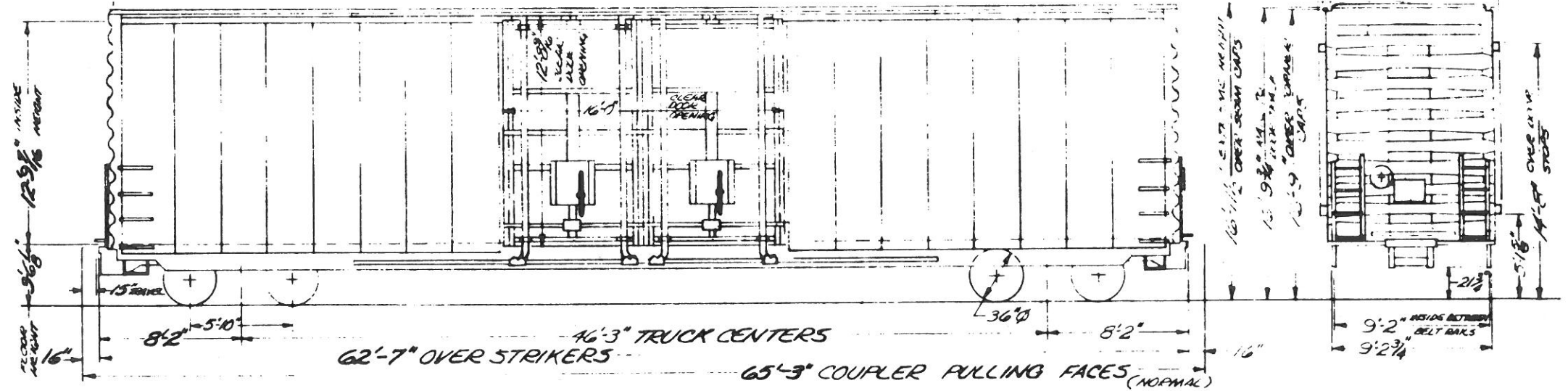
5-1-70

— REVISIONS —

85 TON BOX CAR

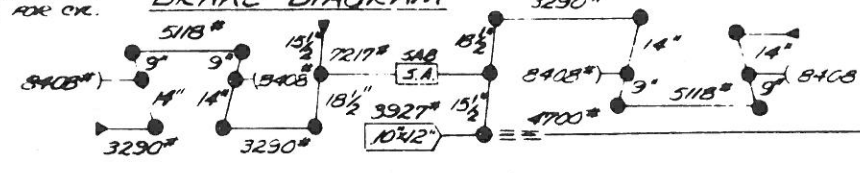
60'-9" INSIDE LENGTH

59'-7" BETWEEN WOOD BULKHEADS



NOTE: BRAKE FORCES SHOWN ARE THEORETICAL
SICE TEST SHOWS 69.2% EFF. FOR CY.
100.1% EFF. FOR HANDBRAKE

BRAKE DIAGRAM

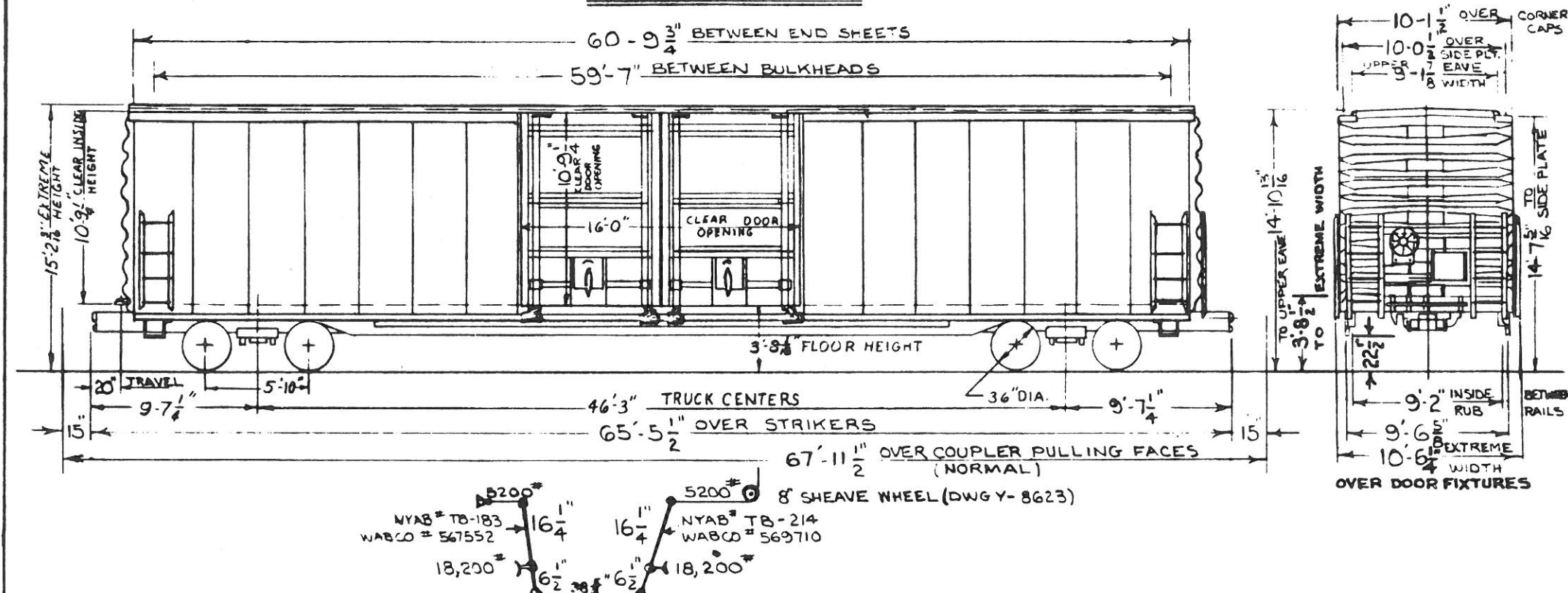


THIS CAR EXCEEDS ALL
PLATE "B" AND "C" CLEARANCE
OUTLINES

THIS CAR IS EQUIPPED WITH
STANDARD BOX CAR SAFETY
APPLIANCES

- GENERAL -		ENDS: STANRAY DE-23835-A (DTR DWG. W-11256) TOP SHEET 3/2, INT. BOTTOM 3/4 CB.M.S.	JOURNAL BEARINGS: TIMKEN 1-A JOURNAL BEARING RETAINER: NATL CASTINGS (DTR DWG. Y-5849)
BUILDER: GREENVILLE STEEL CAR		END SILL: 6" x 3 1/2" x 3/8" ANGLE ASTM A-36	SIDE BEARINGS: STUCKI 688-B (DTR DWG. Z-5817)
YEAR BUILT: 1973		FLOOR: 1/4" STEEL P.L.T. ASTM A-441	SIDE FRAME: AAR CODE NONE ASF PATT. NO. 22141-A (DTR DWG. W-8769) AAR IDENT. NO. 5017 NARROW PED.
BUILDER'S REF: 0.0-1062		GENERAL DWG. G5C 36142-B (DTR DWG. V-11289)	SNUBBING DEVICE: BARBER CENTER PLATE EXTENSION PATS. S.C.T. 4529-A (DTR DWG. X-11157)
A.A.R. CLASS: XP		HANDBRAKE: AJAX 14665-1	SPRINGS: 3 1/2" TRAVEL, 14 OUTER & 12 INNER COILS PER TRUCK A.A.R. D-5
NO BUILT: 36		LINING: NONE	SIDE SPRINGS: DTR DWG. X-3426
CAPACITY: 7100 CU. FT.		ROOF: STANRAY DE-23841-A (DTR DWG. W-11257)	TYPE OF TRUCK: BARBER 5-2-C, 6 1/2" x 12" STABILIZED NARROW PESTRAL ROLLER BEARING EQUIPPED FOR BARBER C.P.E.P.
AVE. LT. WT. 93000 LBS.		SIDE PLATE: 8" x 4" x 1/2" ANGLE ASTM A-36	WEIGHT OF TRUCK: 10,650 LBS.
AVE. LOAD LIMIT: 170,000 LBS.		SIDE SILL: 3 1/2" x 3 1/2" x 3/8" ANGLE ASTM A-36	WHEELS: 36" 2 WEAR W/OT STEEL J-36
- BODY -		SIDE SILL REINFORCEMENT: 15" x 33.9" / FT. CHANNEL ASTM A-36	
AIR BRAKE MFG.: NEW YORK AIR BRAKE		SIDE SHEATHING: 1/4" P.L.T. @ CORNER & DOOR POSTS	
AIR BRAKE SCHEDULE: ABD 10 1/2 CYLINDER A-1		NO INTERMEDIATE SHTS ASTM A-569, 2% CU.	
REDUCTION VALVE WITH 2" HIGH FRICTION COMPOSITION SHOES		SLACK ADJUSTER: SAG TYPE DEV 2-USA-DJ (DWG Y-10172)	
BODY CENTER PLATE: 13 1/2" DRESSER PATT. 85-340-AFH		- TRUCKS -	
BODY SIDE BEARING: 3/8" x 4" x 20 P.L.T. PITTS. FORGE D-21899-A		BOLSTER: AAR CODE NONE ASF PATT. NO. 22256 JA (DTR DWG. N.L.W-11500) AAR IDENT. NO. 2142	
CENTER SILL: 2 C213 @ 41.2" / FT. ASTM A-572, GR. 50		ROLLER BEARING - EQUIP FOR C.P.E.P.	
CENTER SILL AREA: 24.24 SQ. IN.		BOLSTER CENTER PLATE: HORIZONTAL WEAR PLATE - (DTR Z-9692) VERTICAL WEAR PLATE (DTR Y-10326)	
COUPLER: SOLID BUTT, "F" SHANK, "E" HEAD, 31" HEAD TO PIN ASF PATT. 5592C-HT GRADE "C" STEEL		BRAKE BEAM: 1/8" UNIT FOR COMPOSITION SHOES BUFFALO 88-252-F (DTR DWG. X-10959)	
COUPLER RELEASE RIGGING: HOLLAND "UNIVERSAL" D-101-E		BRAKE SHOES: 2" HIGH FRICTION COMP. (R.F.P. V-174)	
CROSSOVER STEP: U.S. GYPSUM G5-3908		GEN. DWG. A.S.F. 48-7109-A (DTR DWG.)	
CUSHIONING DEVICE: KEYSTONE "EC-15RA" 15" TRAVEL		JOURNALS: 6 1/2" x 12" ROLLER BEARINGS	
DOORS: YOUNGSTOWN DOUBLE FLUG OPEN FROM INSIDE OR OUTSIDE. TOP SAFETY CRANKS YOUNGSTOWN DWG. Y-97426			
		CARS: 25900-25935	
		D.T.&I.	
		MECHANICAL ENGINEERING DEPT. 1-11-74	
		- REVISIONS -	

- 86 TON BOX -

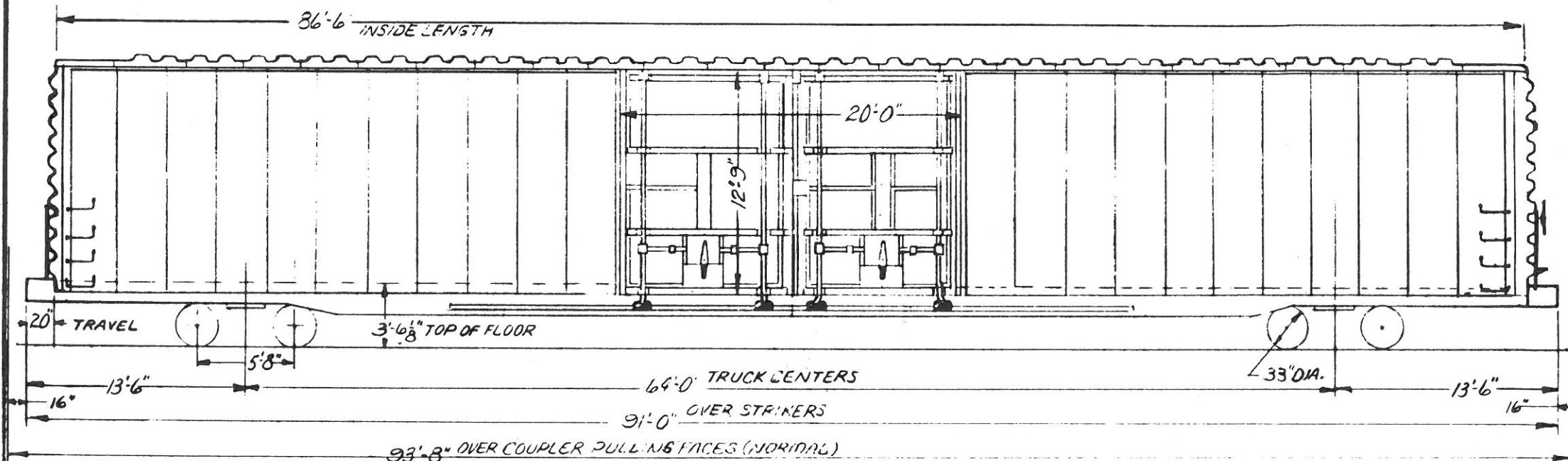


HANDBRAKE DIAGRAM

LESSOR **GATX-ARMCO-BOOTHE** LEASE 4302 TERM: 4-28-85

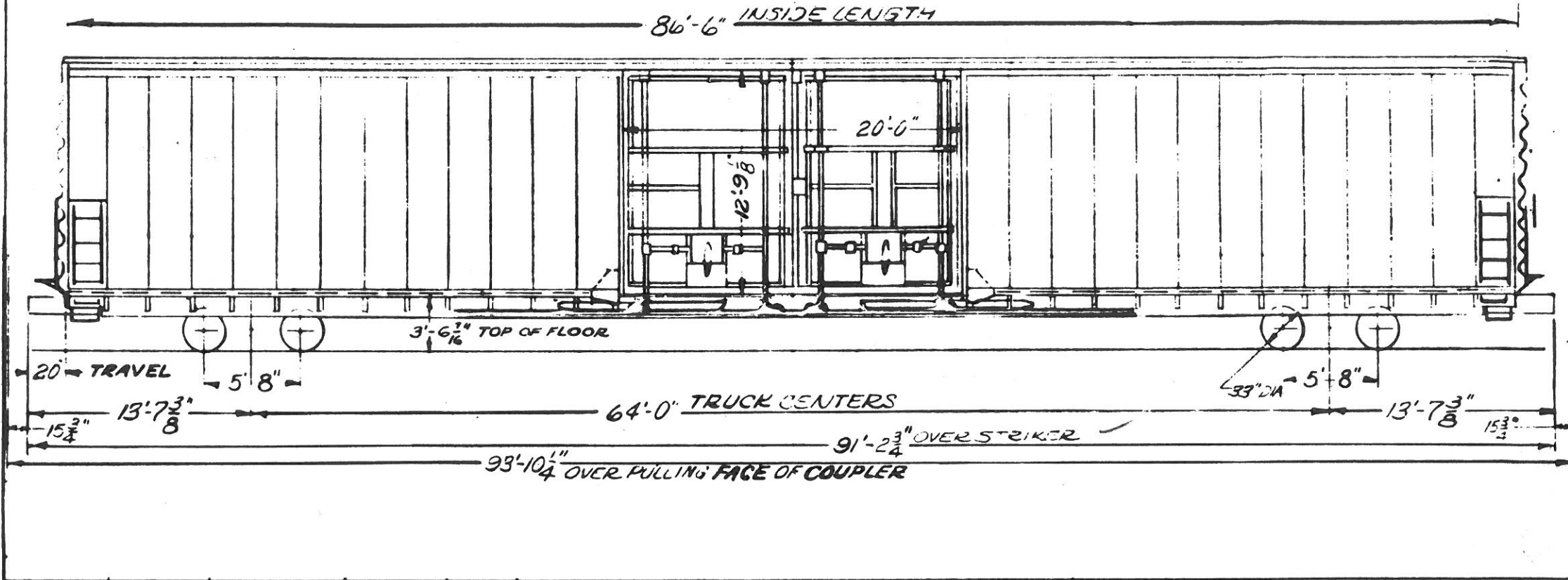
- GENERAL -		CUSHION. DEVICE (CON.) TYPE 100SA-20AH	GENERAL DWG: PC 2F-F33 (DT&I W-9431)
BUILDER: PENN CENTRAL		DOORS/FIXTURES: YOUNGSTOWN DOUBLE PLUG, OPEN FROM INSIDE OR OUTSIDE DWG 69-39349	JOURNALS: 6 1/4" x 12" ROLLER BEARING
YEAR BUILT: 1970		DRAFT GEAR: WAUGHMAT WM-CG-3	JOURNAL BEARINGS: HYATT 6-A
BUILDERS REF: X66A		DRAFT GEAR ATTACHMENTS: FRONT FOLLOWER - WABCO # 567552	SIDE BEARINGS: STUCKI 688-B (DT&I DWG Y-5817)
AAR CLASS: XP		ENDS: WC TOP ER-X-305-2 9/16" BOT. ER-X-30808-1 1/4"	SIDE FRAME: A.A.R CODE: NONE BUCKEYE PATT NO. F10BG (D.T.B1 DWG NO. W-8769)
NO BUILT: 10		END SILL: 6" x 3 1/2" x 1/2" ROLLED ANGLE	AAR IDENT. NO. B-5046
CAPACITY: 5921 CU. FT.		FLOOR: NAILED STEEL - REPUBLIC X-4835	NARROW PEDESTAL JAW
AVE. LT WT	89,500 LBS.	GENERAL DWG:	SPRING: 3 1/16" A.A.R D-5 14 OUTER & 12 INNER COILS PER TRUCK
AVE. LOAD LIMIT	173,500 LBS.	HANDBRAKE: ELLCON NATIONAL 850-1-NS - HIGH POWER	TYPE OF TRUCK: BARBER 5-2-C, STABILIZED EQUIPPED FOR ROLLER BEARINGS AND TRUCK MOUNTED BRAKES
- BODY -		LINING, END: NONE	WHEELS: 36" DIAM.
AIR BRAKE MFG: NEW YORK AIR BRAKE		SIDE: RUB RAILS PC DWG. C-464671-C	
AIR BRAKE SCHEDULE: ADD VALVE NYOPAC B-3 8 1/2" UMP, A-1 REDUCTION VALVE		ROOF: PENN CENTRAL	
BODY CENTER PLATE: 13 3/4" CAST - WAUGH CG-3895		SIDE PLATE: 6" Z @ 15.7#/FT A-441 STEEL	
BODY SIDE BEARING: 1045 FORGED PC E-463154-C		SIDE SILL: 6" x 6" x 3/8" ANGLE A-113 STEEL	
CENTER SILL: SLIDING - 2 - Z-26 @ 41.2 1/2" A-441 STEEL		SIDE SILL REINFORCEMENT: 15" @ 40#/FT A-441 STEEL	
STATIONARY: 2 - Z-26 @ 36.2 1/2" FT.		SIDE SHEATHING: 1/4" @ DOOR, 0.10" REMAINDER A-113 STEEL	
CENTER SILL AREA: SLIDING - 24.24 SQ. IN.			
STATIONARY - 21.50 SQ. IN.		- TRUCK -	
COUPLER: B-268HT BOTT. OPR. 4-3" PULL FACE TO PIN		BOLSTER: A.A.R CODE: NONE BUCKEYE PATT. NO. B-10110 (D.T.B1 DWG NO. AAR IDENT. NO. B-192)	
COUPLER RELEASE RIG: STAIRAY 4U-19221-C		ROLLER BEARING	
CROSSOVER STEP: U.S. GYPSUM 62355-P		BRAKE BEAM: NYAB # N-8977 (INCL. PISTON)	
CUSHIONING DEVICE: KEYSTONE 20" TRAVEL SINGLE ACT.		BRAKE SHOES: COMPOSITION R.F.P V-141	
			CARS: 220880-220889
			DT&I
			MECHANICAL ENGINEERING DEPT. 9-3-70
			- REVISIONS -

- 50 TON BOX -



~ GENERAL ~		DOOR AND FIXTURES: YOUNGSTOWN, DOUBLE PLUG, ALUM OPEN INSIDE OR OUTSIDE (DWG)	JOURNALS: 6"x11" ROLLER BEARING
BUILDER: GREENVILLE STEEL CAR CO.		DRAFT GEAR: MINER, RF 333 (HIGH CAPACITY)	JOURNAL BEARINGS: TIMKEN G 7 1/2" AP
YEAR BUILT: 1964		DRAFT GEAR ATTIMS: HIGH TENSILE S. YOKE (BY-48)	JOURNAL BEARING RETAINER: BUCKEYE PL-70 (DT&I DWG V-5849)
BUILDERS REF: O.O. 838		ENDS: STD. RY EQPT. CO.; TOP SHT. 3/32", BOT SHTS. 3/16"	SIDE BEARINGS: STUCKI 656-C SINGLE ROLLER (DWG V-1410)
AAR CLASS: XML		END SILL: 6"x3 1/2"x3 3/8" ANGLE	SIDE FRAME: BUCKEYE STEEL CASTINGS PAT# F-7161
NO. BUILT: 26		FLOOR: 3/16" PLT. CORTEN; WITH ANTI SKID COATING	NARROW PEDESTAL JAW, AAR CODE P7502AN-UN
CAPACITY: 10,000 CU. FT.		GENERAL DRAWING: GSC 29946-D, DT&I V-7446	AAR IDENT# B-866 DT&I DWG, V-7876
AVG. LT WT.: 119,300 LBS.		HAND BRAKE: MINER (NON SPIN TYPE)	SPRINGS: 2 1/2" TRUL, 10 OUTER, 10 INNER COILS/TRUCK
AVG. LD LIMIT: 105,700 LBS.		LINING: END 3/16" PLATE	TYPE OF TRUCK: 70 TON BARBER S-2-A
~ BODY ~		ROOF: STD. RY. EQPT. CO 4R-18539 (DT&I DWG)	STABILIZED, EQPT FOR ROLLER BEARINGS & TRUCK MOUNTED BRAKES
AIR BRAKE MFG: WESTINGHOUSE AIR BRAKE CO		SIDE BEARING CTRS.: 4'-2"	WHEELS: 33", ONE WEAR W/ROT STEEL J-33
AIR BRAKE SCHEDULE: ABD-1 VALVE WABCO PAC B3		SIDE SILL: 6"x3 1/2"x3 3/8" ANGLE	NON HEAT TREATED, FOR RAISED WHEEL SEAT AXLES
		SIDE PLATE: 8"x4 1/2" ANGLE	
		SIDE SHEATHING: 1/4" PLT @ CORNER & DOOR POSTS	
		0.01" PLT. INTERMEDIATE SHEETS	
		~ TRUCK ~	
		BOLSTER: BUCKEYE STEEL CASTINGS PAT# B-7151	CARS: 26000-26025
		DT&I DWG W-7875 AAR IDENT # B-1895	D.T. & I.
		AAR CODE B75-01HN-BN	MECHANICAL ENGINEERING DEPT. 9-10-64
		BRAKE BEAM: WAB. UNIT #562997 (INC. PISTON)	— REVISION —
		BRAKE SHOES: RAILROAD FRICTION PRODUCTS V-141	
		1 3/16" COMPOSITION	
		GENERAL DWG. STD. CAR TRK 3739-B, DT&I DWG W-6619	
			2/65 1/66 7/70

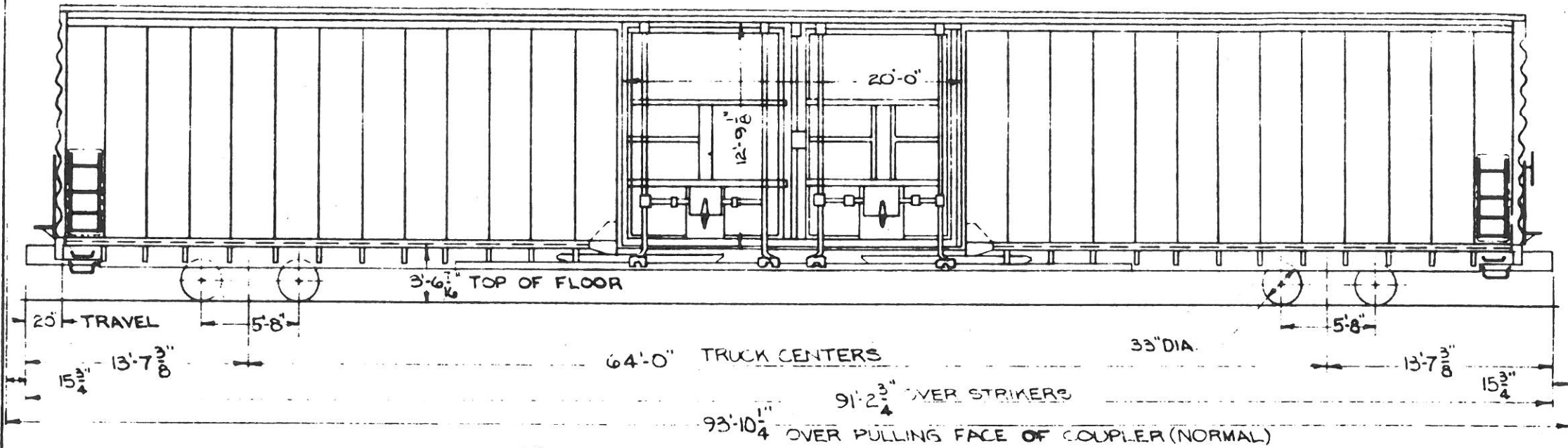
- 50 TON BOX -



- GENERAL -		DOOR AND FIXTURES: YOUNGSTOWN DOUBLE PLUG ALUM. OPEN INSIDE OR OUTSIDE (DWG. V-7854)	JOURNALS: 6"X11" ROLLER BEARING
BUILDER: PULLMAN STANDARD	YEAR BUILT: 1965	DRAFT GEAR: MINER RF 393 (HIGH CAPACITY)	JOURNAL BEARINGS: TIMKEN 6"X11" AP
BUILDERS REF: 9510	AAR CLASS: X11L	DRAFT GEAR ATT'N'S: HIGH TENSILE CS. YORE (BY-45)	JOURNAL BEARING RETAINER: BUCKEYE-F-70 (C.F. DWG. 5843)
NO. BUILT: 111	CAPACITY: 10,000 CU. FT.	ENDS: PULLMAN STANDARD: TOP SH. 532, BOT SH. 1/4 INTER. SH. .1793"	SIDE BEARINGS: SINGLE ROLLER TYPE # 656-C (STUCK)
A13. LT. WT.: 109,900 LBS.	A13. LD. LIMIT: 110,100 LBS	END SILL: 6" X 3 1/2" X 5/16" ANGLE	SIDE FRAME: NATIONAL CASTING CO. PAT. NO. 45931-4-A NARROW PEDESTAL JAW AAR CODE F75-02BN-JA AAR IDENT. # 8-943 (DT&I DWG. V-809B)
- BODY -		FLOOR: 1/4" PLT. TRI-TEN ANTI-SLIP COATING	SPRINGS: 2 1/2" TRVL. 10 OUTER 10 INNER COILS/TRUCK D-3
AIR BRAKE MFG: WESTINGHOUSE + AMERICAN BRAKE SHOE	AIR BRAKE SCHEDULE: ABD VALVE-ARSCOT	GENERAL DRAW. NO.: 537-F-49-B (DT&I DWG. 1-8001)	TYPE OF TRUCK: 70 TON BARBER S-2-A
CYLINDERS: #21426 A-1 RED VALVE	BODY CENTER PLATE: 13 3/4" CAST STEEL (DATA DWG. V-7143)	HAND BRAKE: AJAX-CONSOLIDATED CO. 14665-B	STABILIZED EQPT FOR ROLLER BEARINGS & AMERICAN BRAKE SHOE TRUCK MOUNTED BRAKES INCLUDING S. ACE ADJUSTER
BODY SIDE BEARING: HARDENED STEEL-CARNEGIE SECT. #198	CENTER SILL: SLIDING 2 TRI-TEN 4 1/2" FT. ROLLED ZEE STATIONARY 2 CHS. 3 1/3" FT. ROLLED ZEE	LINING: END-3/16" PLATE	WHEELS: 33" ONE WEAR (UW) CAST STEEL CT-33
CENTER SILL AREA: SLIDING - 24.24 SQ. IN. STATIONARY - 18.90 SQ. IN.	COMPARTMENTIZER: EQUIPCO (DT&I DWG. V-7877)	SIDE RAIL RAILS: DE-2 EVANS BELT RAIL	BOX: 26100-26210 D. T. & I
COUPLER: TYPE E HEAD TYPE F SHANK 60° PULLING FACE TO PIN HOLE.	COUPLER RELEASE RIGGING: PULLMAN STD CAR (DWG. V-7935)	ROOF: PULLMAN-STD. 592-H-100-J (DT&I DWG. V-8077)	
CROSS OVER STEP: US GYPSUM 62165-E	CUSHIONING DEVICE: PULLMAN STANDARD HYDRA-FRAME 90 20° TRAVEL	SIDE BEARING CTRS: 4'-2"	MECHANICAL ENGINEERING DEPT. 6-30-65 - REVISION -
		SIDE SILL: 4" X 4" X 5/16" ANGLE (TRI-TEN)	
		SIDE PLATE: 3" @ 6.7" 2 AND 4" X 3" X 5/16" ANGLE	
		SIDE SHEATHING: 1/4" PLT. @ CORNER & DOOR POSTS	
		10° PT. INTERMEDIATE SHEETS	
		- TRUCK -	
		BOLSTER: NATIONAL CASTINGS CO. PAT. NO. 33892-89 (DT&I DWG. W-8096) AAR IDENT. # B-1991	
		BOLSTER CENTER PLATE WEAR RING: NATIONAL CASTING CO. NO. 43282 (DWG. Y-8097)	
		BRAKE BEAM: UNIT # 18	
		BRAKE SHOES: AMERICAN BRAKE SHOE CO. AAR # 1	
		GENERAL DWG.: (DT&I DWG. W-6918)	

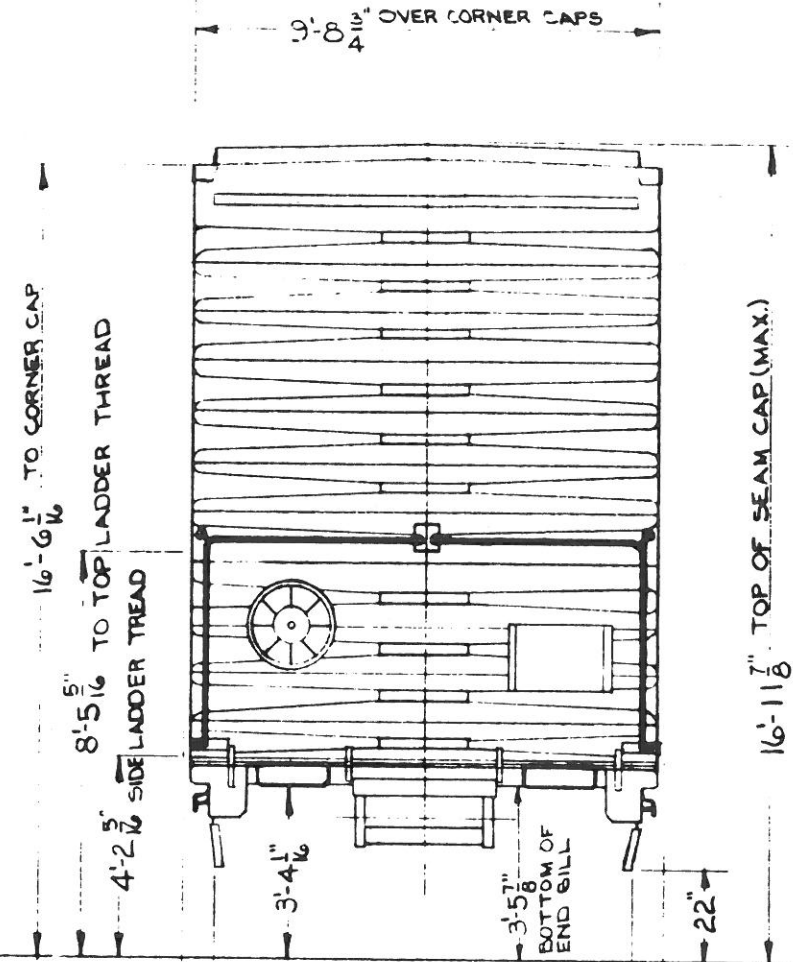
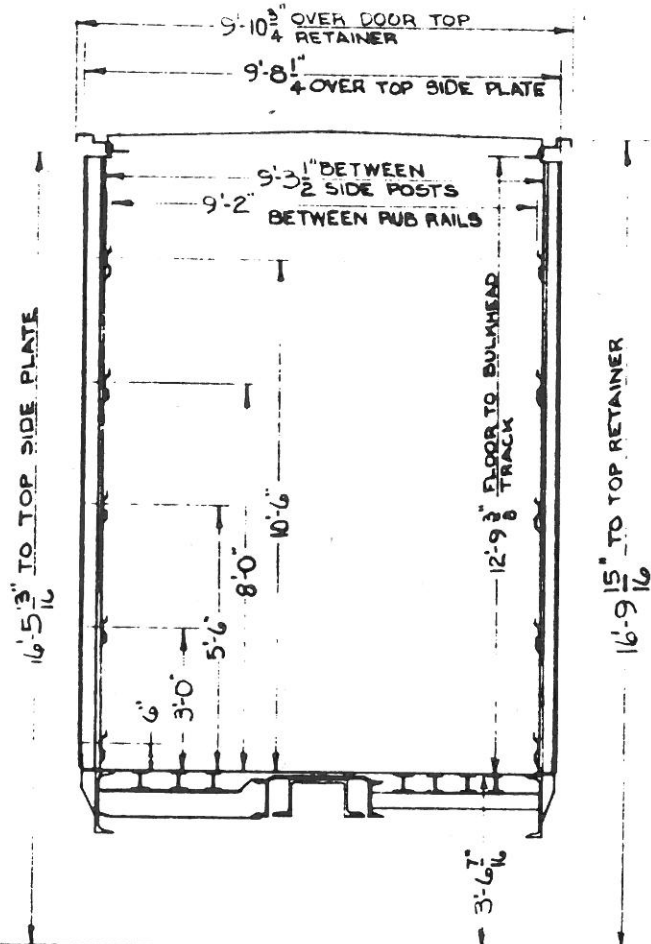
50 TON BOX

86'-6" INSIDE LENGTH

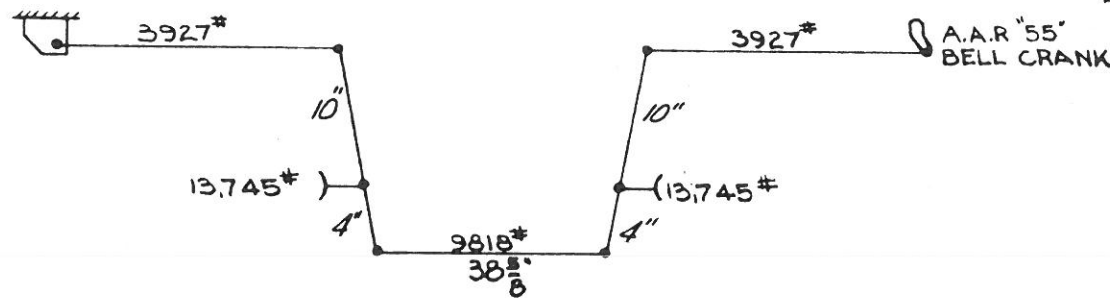


NOTE 1: GRADE "C" CAST STEEL CENTER PLATES, BUCKEYE PATT. 45-62-HT (DWG. W-9466) APPLIED TO ALL CARS EXCEPT: 26347, 26427 WAUGH CASTING CG-4354, 26304, 26353, 26354, 26357, 26360, 26391, 26397, 26409, 26424 PULLMAN FABRICATED, 26422 PULLMAN FABRICATED-REBUILT BODY BOLSTER

- GENERAL -		- BODY -									
BUILDER: PULLMAN STANDARD (BESSEMER)	CUSHIONING DEVICE: PULLMAN STD. HYDRA-FRAME 40 (20' TRAVEL)	BRAKE SHOES: COMPOSITION, RAILROAD FRICTION PRODUCTS W-141	GENERAL DWG: DT&I DWG. X-8364								
YEAR BUILT: 1966	DOOR AND FIXTURES: YOUNGSTOWN DOUBLE PLUG (ALUM.)	JOURNALS: 6"x11" ROLLER BEARINGS	JOURNAL BEARINGS: HYATT 6"x11" 4-R-2843 (GROUP 2)								
BUILDERS REF: 9109-A-4A	OPEN FROM INSIDE OR OUTSIDE (DT&I DWG)	SIDE BEARINGS: SINGLE ROLLER TYPE (STUCKI 656-C)	DT&I DWG. Y-1470								
A.A.R. CLASS: XML	DRAFT GEAR: MINER RF-333 (HIGH CAPACITY)	SIDE FRAME: A.A.R. CODE F75-02BN-UA, A.S.F. PATTERN NO.	21982-D, DT&I DWG. W-8366, A.A.R. IDENTIFICATION								
NO. BUILT: 147	DRAFT GEAR ATTACHMENTS: HIGH TENSIL C.S. YOKE (BY-45)	NO. 903, OR BUCKEYE PATTERN NO. F-7161,	DT&I DWG. V-7876, A.A.R. IDENTIFICATION NO. B-844								
CAPACITY: 10,000 CU. FT.	ENDS: PULLMAN STD, TOP SHEET 3/8" Q.H.S., INTER. SHEET .1793" Q.H.S.	SPRINGS: 2 1/2" TRAILER OUTER, 10 INNER COILS PER TRUCK, A.A.R. D-3	TYPE OF TRUCK: BARBER S-2-A 6"x11" STABILIZED								
AVG. LT. WT.: 109,000 LBS.	BOTTOM SHEET 1/4" O.H.S.	EQUIPPED FOR ROLLER BEARINGS (NARROW	PEDESTAL) & TRUCK MOUNTED BRAKES								
AVG. LD. LIMIT: 111,000 LBS.	END SILL: 6"x3 1/2"x 5/16" ANGLE	WHEELS: 33" ONE WEAR CAST STEEL CJ-33									
- BODY -		- TRUCK -									
AIR BRAKE MFG.: WESTINGHOUSE	FLOOR: 1/4" PLT. TRI-TEN WITH ANTI-SKID COATING	BOLSTER: A.A.R. CODE 875-01HN-BN, A.S.F. PATTERN NO.									
AIR BRAKE SCHEDULE: ABD VALVE - WABCOPAC B-3, 7 1/2"	GENERAL DWG: 601-F-62 (DT&I DWG.)	22063-AQ, DT&I DWG. W-8365, A.A.R. IDENTIFICATION									
UNITS, A-1 REDUCTION RELAY VALVE	HANDBRAKE: KLASING 10056	NO. 1873, OR BUCKEYE PATTERN NO. B-7231 DT&I DWG.									
BODY CENTER PLATE: 13 3/4" SEE NOTE 1	LINING: END-3/16" PLT.	W-8379, A.A.R. IDENTIFICATION NO. B-1895.									
BODY SIDE BEARING: HARDENED STEEL - CARNEGIE SEC. W-4198	SIDE - RUB RAILS, DF-2 EVANS BELT RAIL	BOLSTER CENTER PLATE WEAR RING: DT&I DWG. Y-8097									
CENTER SILL: SLIDING - 2 TRI-TEN 41.2#/FT. ROLLED ZEE	ROOF: PULLMAN STD.	BRAKE BEAM: W.A.S. UNIT 56220 (INCLUDING PISTON)									
STATIONARY - 2-15" O.H.S. CHANNELS @ 31.8#/FT.	SIDE BEARING CENTERS: 4'-2"										
CENTER SILL AREA: SLIDING - 24.24 SQ. IN.	SIDE PLATE: 3" @ 6.7#/FT. Z, 4"x3"x 5/16" ANGLE										
STATIONARY - 18.60 SQ. IN.	SIDE SHEATHING: 1/4" SHT. @ CORNER AND DOOR POSTS										
COMPARTMENTIZER: PRECO (DT&I DWG. V-8352)	10" SHT., INTERMEDIATE SHEETS										
COUPLER: TYPE "E" HEAD, TYPE "F" SHANK 60" FROM PULLING FACE TO PIN HOLE	SIDE SILL: 4"x4"x 5/16" ANGLE (TRI-TEN)										
COUPLER CENTERING DEVICE: STD. RWY. EQUIP. CO. (DT&I DWG.)											
COUPLER RELEASE RIGGING: PULLMAN STD (DT&I DWG.)											
CROSSOVER STEP: MORTON (DT&I DWG. W-8291)											
		BOX: 26300-26446									
		DT&I									
		MECHANICAL ENGINEERING DEPT. 6-8-66									
		- REVISION -									
		<table border="1" style="width: 100%; height: 20px;"> <tr> <td style="width: 5%;">NO</td> <td style="width: 5%;">BY</td> <td style="width: 5%;">DATE</td> <td style="width: 5%;">DESCRIPTION</td> </tr> <tr> <td> </td> <td> </td> <td> </td> <td> </td> </tr> </table>		NO	BY	DATE	DESCRIPTION				
NO	BY	DATE	DESCRIPTION								



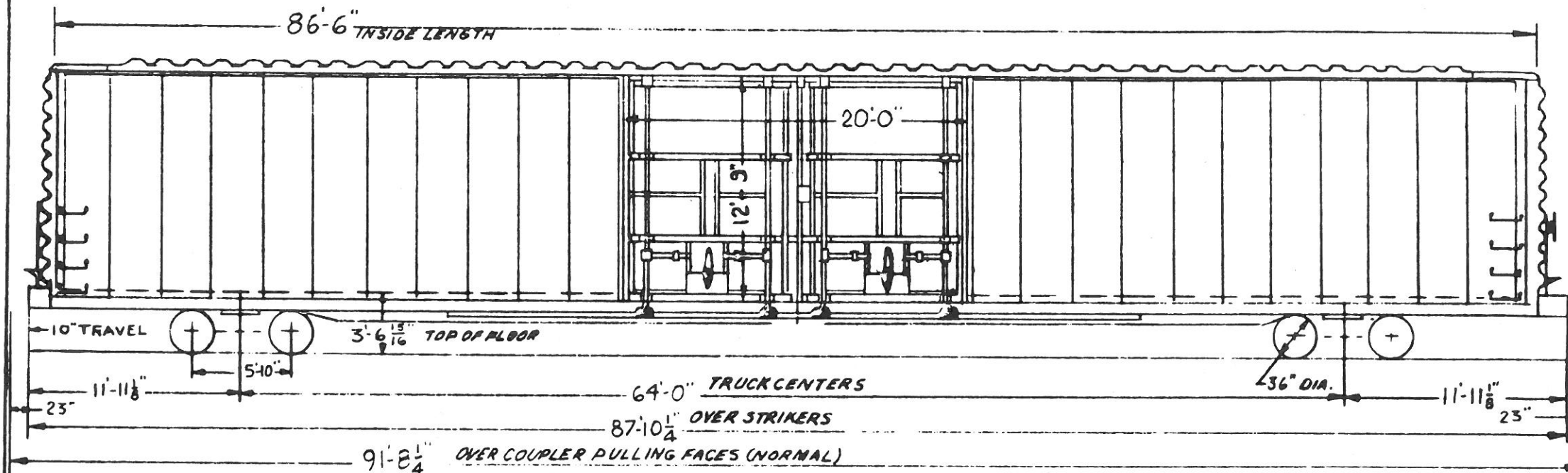
NOTE: THIS CAR EXCEEDS A.A.R CLEARANCE LIMIT OUTLINES, PLATES 'B' & 'C'



HAND BRAKE DIAGRAM

CARS: 26300-26446				
CLEARANCE DIAGRAM				
MECHANICAL ENGINEERING DEPT 8-13-66				
- REVISIONS -				

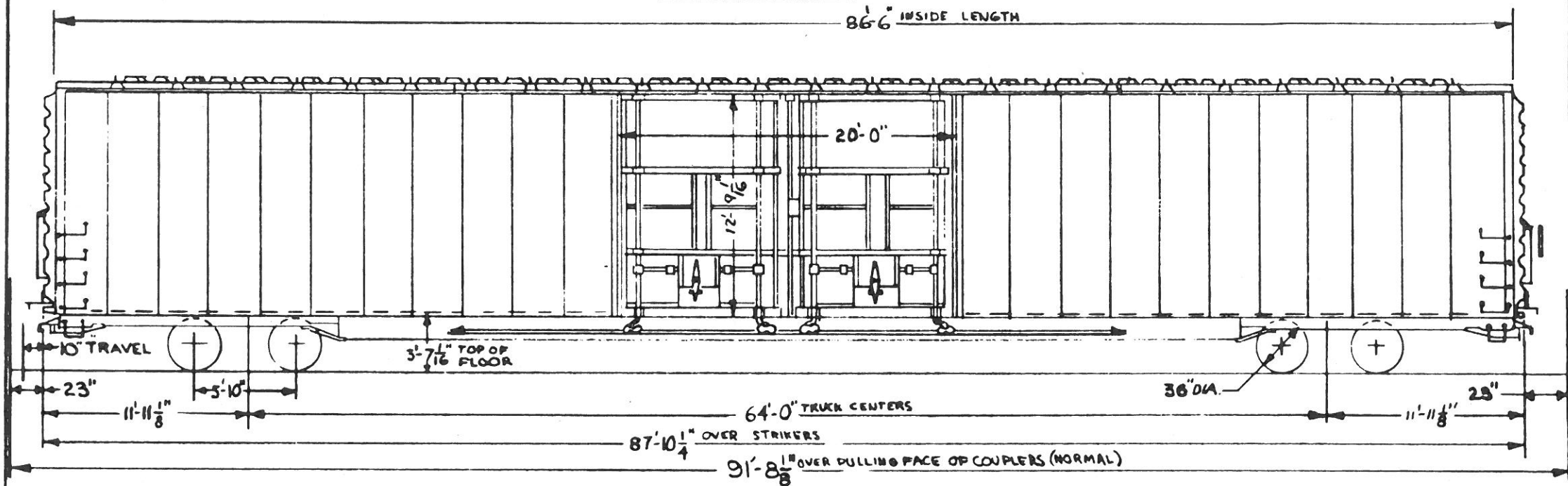
- 75 TON BOX -



LESSOR C.I.T. LEASING CORP. LEASE No. 4111 TERM 8-1-83

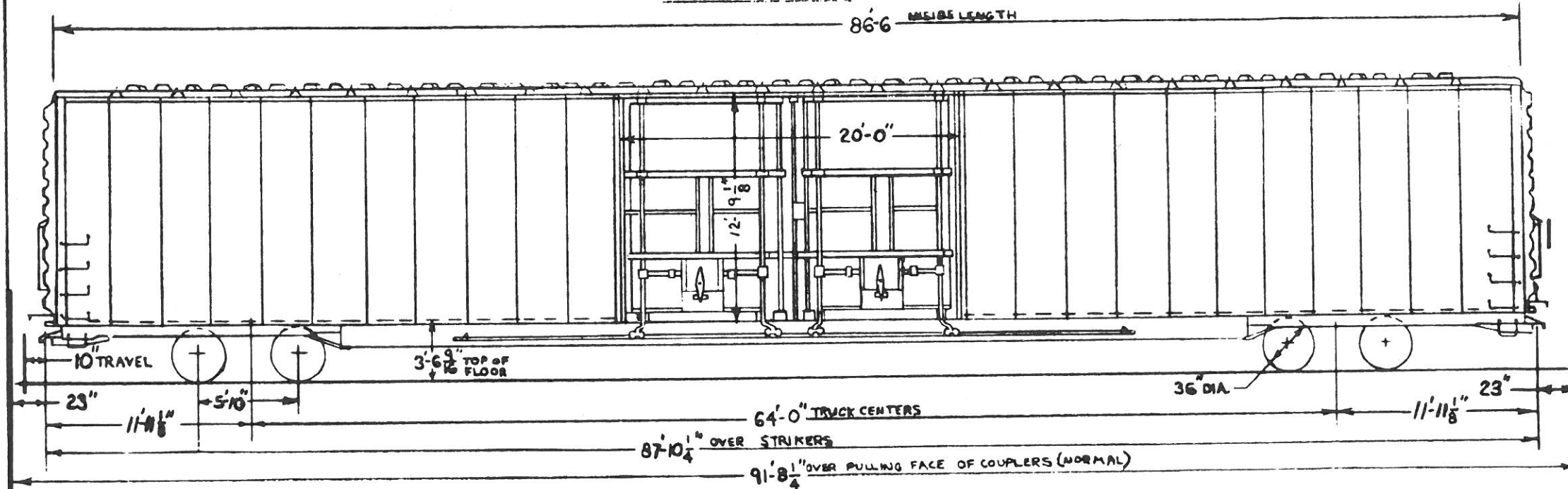
~ GENERAL ~		DOOR AND FIXTURES: YOUNGSTOWN DOUBLE PLUG (ALUMINUM) OPEN FROM INSIDE OR OUTSIDE (DWG. V-9084)	JOURNALS: 6 1/2" x 12" ROLLER BEARINGS
BUILDER: GREENVILLE STEEL CAR CO.	YEAR BUILT: 1968	ENDS: STANRAY 5E-19051-B (DT&I DWG. V-8789)	JOURNAL BEARINGS: 6 1/2" x 12" - 26500-26569 TIMKEN 1-A
BUILDERS REF: O.O. 953	AAR. CLASS: XL	TOPSHEET 3/32", INTER. SHEET 3/16", BOTTOM SHEET 3/16"	26570-26634 HYATT 6-A
NO. BUILT: 135	CAPACITY: 10,000 CU. FT.	ENDSILL: 6" x 3 1/2" x 3/8" ANGLE	JOURNAL BEARING RETAINER: BETHLEHEM (DWG. Y-5849)
AVG. LT. WT: 110,200 LBS	AVG. LD. LIMIT: 152,800 LBS	FLOOR: 1/4" PLT. TRI-TEN STEEL WITH ANTI-SKID PAINT	SIDE BEARINGS: STUCKI 688-B (DWG. Z-5817)
~ BODY ~		GENERAL DRAWING: G.S.C. 33161 (DT&I V-9606)	SIDE FRAMES: AAR CODE: NONE ASF. PATT. 22141-A
AIR BRAKE MFG: NEW YORK AIR BRAKE	AIR BRAKE SCHEDULE: ABD VALVE, NYCOPAC B.3.8 1/2	HAND BRAKE: MINER 6600-L 1966	DT#1 DWG. W-8769 AAR IDENTIFICATION No F-5017
UNIT (No. N-8982) A.I. REDUCTION RELAY VALVE	BODY CENTER PLT: 13 3/4" FABRICATED (DWG. Y-8780)	LINING END: 3/16" STL. PLT.	NARROW PEDESTAL
BODY SIDE BEARING: HARDENED STEEL (DWG. Y-9291)	CENTER FILLER: SYM. WAYNE (DWG. W-9085)	SIDE: RUB RAILS, WEST. RY. DEVICES	SPRINGS: 3 1/2" TRAVEL 20 OUTER 10 INNER COILS PER TRUCK, AAR D-5
CENTER SILL: 41.2"/FT. ROLLED ZEE	CENTER SILL AREA: 24.24 SQ. IN.	ROOF: STANRAY 4R-19052-A (DWG. W-8790)	SNUBBER: HOLLAND D-5 (DWG. Z-8768) 4 PER TRUCK
COMPARTMENTIZER: EQUICO 222-H-16792-	COUPLER: TYPE "E" HEAD, TYPE "F" SHANK 60" FROM PULLING FACE TO PIN HOLE	SIDE BEARING CTRS: 4'-2"	TYPE OF TRUCK: BARBER S-2-C, 6 1/2" x 12" STABILIZED
COUPLER CENTERING DEVICE: STANRAY (DWG. V-8785)	COUPLER RELEASE RIGGING: STANRAY (DWG. W-8784)	SIDE SILL: 3 1/2" x 3 1/2" x 3/8" ANGLE	NARROW PEDESTAL ROLLER BEARING
CROSS OVER STEP: APEX 4459 (DWG. X-8775)	CUSHIONING DEVICE: FREIGHTMASTER END OF CAR No. 87.14120 (9" TRAVEL IN BUFF, 1" IN DRAFT)	SIDE REINFORCEMENT: 15" @ 33.9"/FT. AND 10" @ 24.9" FT CHANNEL	WHEEL: 36" 2 WEAR WROT STEEL J-36
		~ TRUCK ~	
		BOLSTER: AAR CODE: NONE NATIONAL CASTINGS PATT. NO. 48002-1-C (DWG. W-8798) AAR IDENTIFICATION NO. 8-1910 ROLLER BEARING	CARS: 26500-26634
		BOLSTER CENTER PLATE: HORIZONTAL WEAR PLATE (DWG. Z-8692) VERTICAL WEAR PLATE (DWG. Y-8097)	D.T. & I.
		BRAKE BEAM: HYAB N-8777 (INCLUDING PISTON)	MECHANICAL ENGINEERING DEPT. 10-24-69
		BRAKE SHOES: COMPOSITION R.F.P. V-141	— REVISION —
		GENERAL DWG: ASF 74132-A (DT&I W-8770)	

— 75TON BOX —



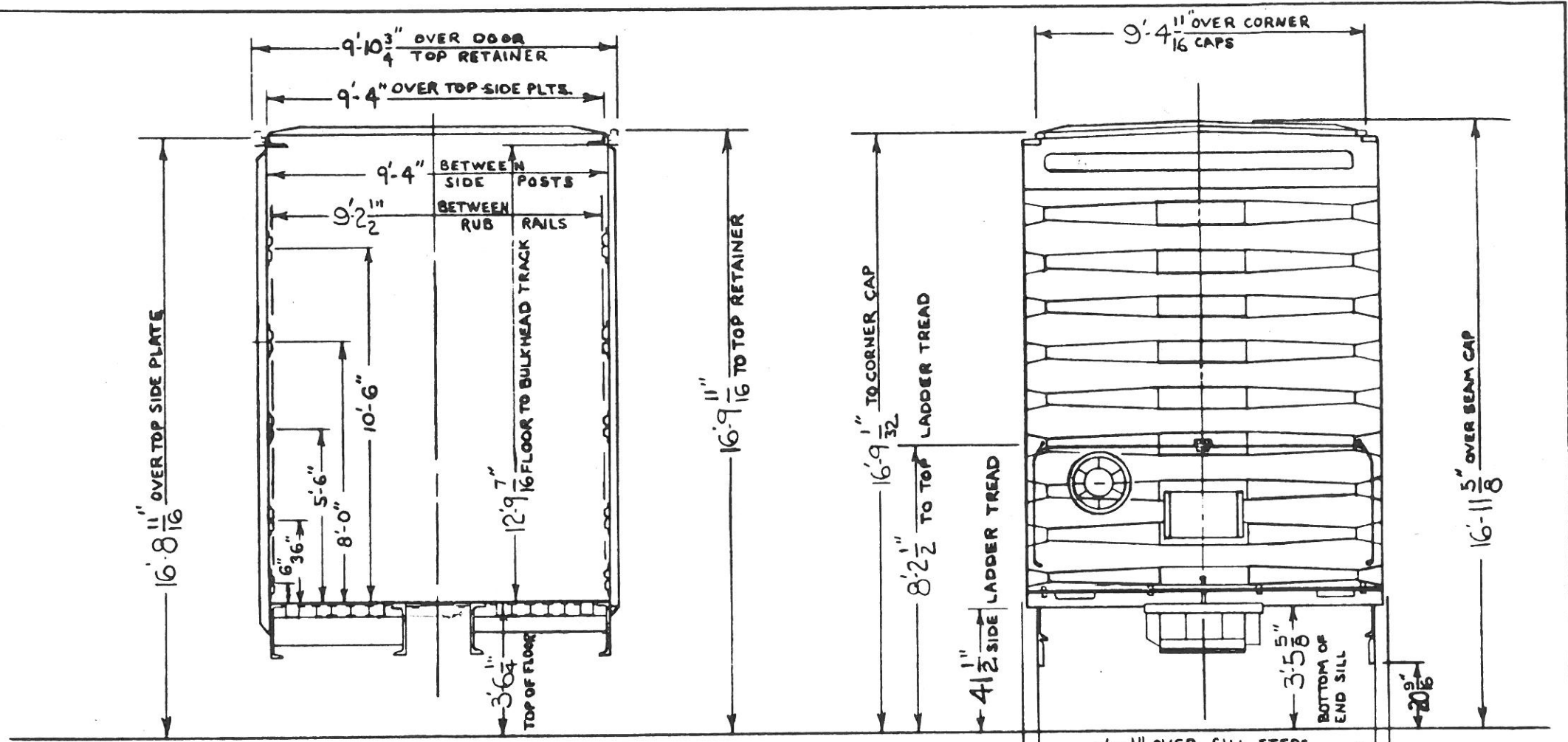
LESSOR		CREEKO EQUIP CORP.	LEASE 4139	TERM. 7-15-83
— GENERAL —				
BUILDER: GREENVILLE STEEL CAR CO.	DOOR & FIXTURES: YOUNGSTOWN DOUBLE PLUG- (ALUMINUM) OPENS FROM INSIDE OR OUTSIDE (DWG. V-9084)		JOURNALS: 6 1/2" x 12" ROLLER BEARINGS	
YEAR BUILT: 1968	ENDS: STANRAY SE-19051-B (DT&I DWG. V-8789)		JOURNAL BEARINGS: TIMKEN 6 1/2" x 12" 1-A	
BUILDERS REF NO. 0.0.956	TOP SHEET 5/32 INTER. SHEET 3/16 BOTTOM SHEET 3/16"		SIDE BEARINGS: STUCKI 688-B (DWG. Z-5817)	
A.A.R. CLASS: XL	ENDSILL: 6" x 3 1/2" x 3/8" ANGLE		SIDE FRAMES: A.A.R. CODE - NONE A.S.F. PATT.#22141-A (DT&I DWG. W-8769) A.A.R. IDENT NO. 5017	
NO. BUILT: 15	FLOOR: 1/4" STEEL PLATE (TRI-TEN) WITH ANTI-SKID PAINT		SPRINGS: A.A.R. D-5 14 OUTER & 14 INNER COILS PER TRUCK SINGLE SIDE SPRINGS - DWG. Y-7041	
CAPACITY: 10,000 LBS.	GENERAL DRAWING: G.S.C. 32981- (DT&I DWG. V-9616)		TYPE OF TRUCK: BARBER S-2-C, 6 1/2" x 12" STABILIZED	
AVE. LT. WT. 110,800 LBS.	HANDBRAKE: EQUIPCO TYPE 4000 (1966)		EQUIPPED FOR ROLLER BEARINGS AND TRUCK MOUNTED BRAKES, NARROW PED'L	
AVE LOAD LIMIT 152,200 LBS.	LINING: END: 3/16" STEEL PLATE		WEIGHT OF 1 TRUCK: 10,750 LBS.	
— BODY —				
AIR BRAKE MFG.: NEW YORK AIR BRAKE	SIDE: RUB RAILS - WESTERN RY DEVICES		WHEELS: 36" 1 WEAR WROUGHT STEEL H-36	
AIR BRAKE SCHEDULE: ABD VALVE, B-3, 8 1/2"	ROOF: STANRAY 4R-19052-A (DWG. W-8790)			
UNITS, NYCO PAC, A-1 REDUCTION RELAY VALV'S (N. 8982)	SIDE PLATE: 8" x 4" x 1/2" ANGLE			
	SIDE SHEATHING: 1/4" SHY @ CORNER & DOOR POSTS			
	10" SHY - INTERMEDIATE SHEETS			
BODY CENTER PLATE: 133/4" FABRICATED (DWG. Y-8780)	SIDE SILL: 3 1/2" x 3 1/2" x 3/8" ANGLE			
BODY SIDE BEARING: HARDENED STEEL (DWG. Y-9291)	SIDE SILL REINFORCEMENT: 15 @ 33.9" FT & 10 @ 24.4" CHANNELS			
CENTER FILLER: SYM.-WAYNE (DWG. W-9085)				
CENTERSILL: 2, 2-26 @ 51.2" / FT. EX-TEN 50				
CENTER SILL AREA: 30.12 SQ. IN.				
COMPARTMENTIZER: EQUIPCO 222-H-16792				
COUPLER: E69HTEG BOTT. OPERATED				
COUPLER CENTERING DEVICE: STANRAY (DWG. V-8783)				
COUPLER RELEASE RIGGING: STANRAY (DWG. W-8784)				
CROSSOVER STEEL: NY 4459 (DT&I DWG. Y-8775)				
CUSHIONING DEVICE: FREIGHTMASTER END OF CAR				
NO. 57, 14120 (9" TRAVEL BUFF, 1" IN DRAFT)				
— TRUCK —				
	BOLSTER: A.A.R. CODE - NONE A.S.F. PATT. NO. 22257GA (DT&I DWG. NO. JAAR. IDENT NO. 2047)		CARS: 26635 - 26649	
	BOLSTER CENTER PLATE WEAR PLATES:		D. T. & I.	
	HORIZONTAL: A.S.F. #71157 (DWG. Z-8692)		MECHANICAL ENGINEERING DEPT. 1-28 70	
	VERTICAL: ASP #75607 (DWG. Y-8097)		— REVISIONS —	
	BRAKE BEAM: NYAB #N-8377 (INCLUDING PISTON)			
	BRAKE SHOES: REP. V-141			
	GENERAL DWG. A.S.F. 73991-A (DT&I)			

75 TON BOX

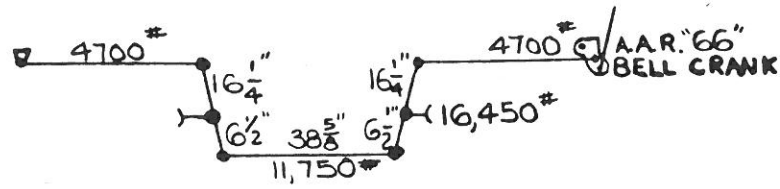


LESSOR U.S. LEASING INTERNAL LEASE 4267 TERM 3-24-85

— GENERAL —		DOOR AND FIXTURES: YOUNGSTOWN DOUBLE PLUG (ALUM)	SIDE FRAME: A.A.R. CODE-NONE BUCKEYE PATT. NO. F-1097
BUILDER: GREENVILLE STEEL CAR CO.		OPENS FROM INSIDE OR OUTSIDE (DWG. V-10061)	(D.T.&I. DWG. W-9679) A.A. IDENT. NO. B-5046 NARROW
YEAR BUILT: 1970		ENDS: STANRAY 5E-19051-B (D.T.&I. DWG. V-8789) TOP SHEET 3/2	PEDESTAL
BUILDERS REF: O.O. 997-A		INTER. SHEET 3/8" BOTTOM SHEET 3/16"	SIDE FRAME WEAR PLATE: BOLT ON TYPE (DWG.)
A.A.R. CLASS: XL		END SILL: 6" x 3 1/2" x 3/8" ANGLE	SPRINGS: A.A.R. D-5 14 OUTER, 10 INNER COILS PER TRUCK
NO. BUILT: 29		FLOOR: 1/2" PLATE ASTM A-441 STEEL ANTI-SKID PAINT	TYPE OF TRUCK: BARBER S-2-C 6 1/2" x 12" STABILIZED
CAPACITY: 10,000 CU.FT.		GENERAL DWG: GSC 34104- (D.T.&I. DWG. V-10045)	EQUIPPED FOR TRUCK MOUNTED BRAKES, NARROW PEDESTAL
AVE. LT. WT.: 112,600 LBS		HAND BRAKE: ELLCON-NATIONAL D-1600-2 (1965)	ROLLER BEARINGS
AVE. LOAD LIMIT: 150,400 LBS.		LINING: END 3/4" STEEL PLATE ASTM A-569	WHEELS: 36" 2 WEAR CAST STEEL CJ-36
		SIDE - RUBRAILS - WESTERN RY DEVICES (DWG. C-1673-Y)	
— BODY —		ROOF: STANRAY 4R-19052-C (LINE 1) (D.T.&I. DWG. V-8790)	
AIR BRAKE MFG.: NEW YORK AIR BRAKE CO.		SIDE PLATE: 8" x 4" x 1/2" ANGLE	
AIR BRAKE SCHEDULE: ABD VALVE, NYCOPAC B-3 B1" UNIT		SIDE SILL: 3 1/2" x 3 1/2" x 1/2" ANGLE	
(N-8982) A-1 REDUCTION RELAY VALVE		SIDE SILL REINFORCEMENT: 15" @ 33.9" FT. AND 10" @ 24.9" FT.	
BODY CENTER PLATE & FILLER: INTEGRAL - BUCKEYE PATT. NO. 31-79X (D.T.&I. DWG. W-9678)		CHANNELS ASTM A-572-50 STEEL	
— TRUCK —			
BODY SIDE BEARING: PITT. FORGE D-1208 (D.T.&I. Z-9676)		BOLSTER: A.A.R. CODE: NONE BUCKEYE PATT. NO. B-10076	
CENTER SILL: .2, Z-26 @ 51.2 1/2" ASTM A-572-50		(D.T.&I. DWG. V-9451) A.A.R. IDENT. NO. B-1921 (RB)	
CENTER SILL AREA: 30.12 SQ. IN.		BOLSTER CENTER PLATE: HORIZONTAL WEAR PLATE (Z-8692)	CARS: 26650-26678
COMPARTMENT: ERRI EVANS PRODUCTS DB-302124		VERTICAL WEAR PLATE (Y-9450)	
COUPLER: EG9HTEG - BOTTOM OPERATED		BRAKE BEAM: NYAB N-897T (INCLUDING PISTON)	
COUPLER CENTERING DEVICE: STANRAY 7C-22525-BE		BRAKE SHOES: R.R.V. -141	
COUPLER RELEASE RIGGING: STANRAY 4U-21064-G (2)		GENERAL DWG: BRC C-10609-D (D.T.&I. X-9677)	
CRG - 1/2" OVER STEP: U.S. GYPSUM GROSS - P (D.T.&I. X-11195)		JOURNALS: 8 1/2" x 12" ROLLER BEARINGS	
CUSHIONING DEVICE: FREIGHTMASTER END-OF-CAR		JOURNAL BEARINGS: SKF 6 1/2" x 12" - 4B	
		SIDE BEARINGS: STUCKI 68B-B (D.T.&I. DWG. Z-5817)	
			D. T. & I.
			MECHANICAL ENGINEERING DEPT. 4-21-70
			— REVISIONS —

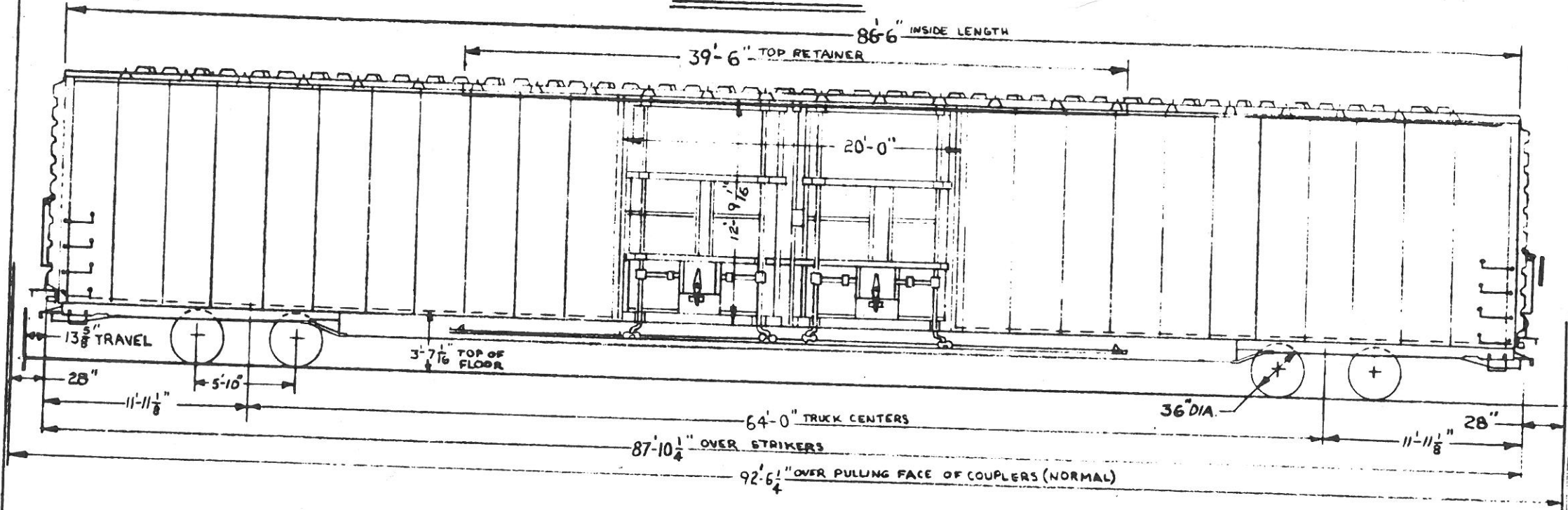


NOTE THIS CAR EXCEEDS A.A.R. CLEARANCE LIMIT OUTLINES PLATES *B* & *C*

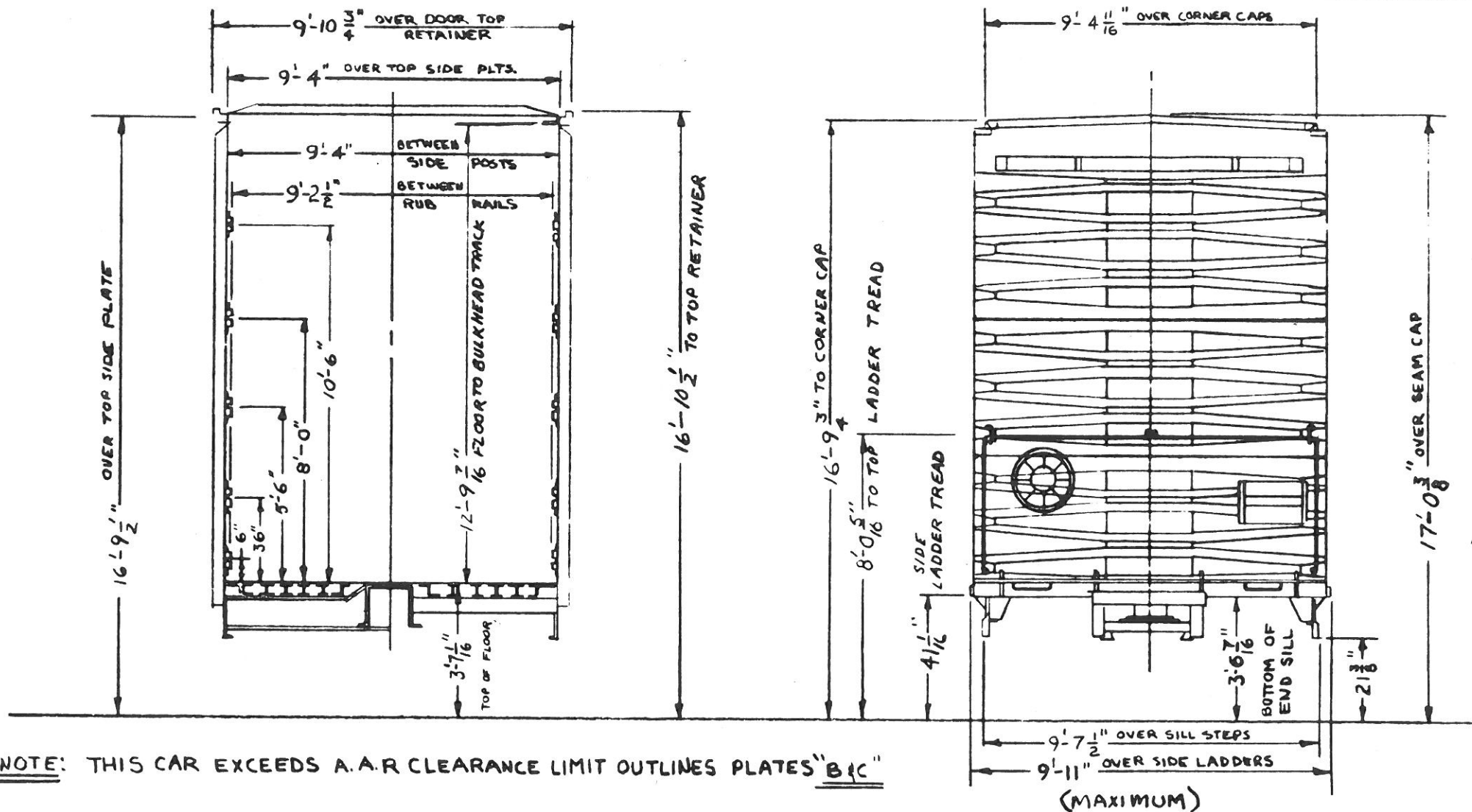


HAND BRAKE DIAGRAM

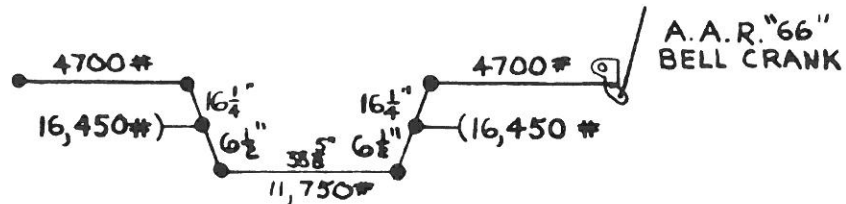
CARS: 26650-26678				
CLEARANCE DIAGRAM				
MECHANICAL ENGINEERING DEPT. 4-21-70				
- REVISIONS -				



GENERAL		LESSOR	C.I.T. LEASING CORP.	LEASE 4229	TERM 10-15-85
BUILDER: GREENVILLE STEEL CAR CO.	DOOR AND FIXTURES: YOUNGSTOWN DOUBLE PLUG (ALUM.)	SIDE FRAME: A.A.R. CODE-NONE N.C. PAT. NO. 47971-B		(DT. I. DWG. V-9420) A.A.R. IDENT. NO. B-5032	
YEAR BUILT: 1969	OPENS FROM INSIDE OR OUTSIDE (DWG. V-10061)	ENDS: STANRAY-5E-19051-B (DT. I. DWG. V-8789)		TOP SHEET 5/32" INTERMEDIATE 3/16" BOTTOM 3/16"	
BUILDERS REF: O.O. 981	END SILL: 6" X 3 1/2" X 3/8" ANGLE	FLOOR: 1/4" PLATE TRI-TEN-STEEL WITH ANTI-SKID PAINT		GENERAL DWG: GSC 33712-	
A.A.R. CLASS: XL	GENERAL DWG: GSC 33712-	HAND BRAKE: ELLCON-NATIONAL D-1600-2 (1966)		LINING: END - 3/16" STEEL PLATE	
NO. BUILT: 37	HAND BRAKE: ELLCON-NATIONAL D-1600-2 (1966)	SIDE - RUB RAILS WESTERN RY. DEVICES		ROOF: STANRAY-4R-19052-A (DT. I. DWG. V-8790)	
CAPACITY: 10,000 CU. FT.	ROOF: STANRAY-4R-19052-A (DT. I. DWG. V-8790)	SIDE PLATE: 8" X 4" X 1/2" ANGLE		SIDE SILL: 6" X 3 1/2" X 3/8" ANGLE	
AVE. LT. WT. : 112,000 LBS.	SIDE PLATE: 8" X 4" X 1/2" ANGLE	SIDE SILL REINFORCEMENT: 15' @ 33# FT @ 10' @ 24.9# FT CHANNEL		TRUCK	
AVE. LOAD LIMIT: 151,000 LBS.	SIDE SILL REINFORCEMENT: 15' @ 33# FT @ 10' @ 24.9# FT CHANNEL	BOLSTER: A.A.R. CODE-NONE BUCKEYE PAT. NO. B-10076		(DT. I. DWG. V-9451) A.A.R. IDENT. NO. B-1921 (RB)	
BODY		BOLSTER CENTER PLATE: HORIZONTAL WEAR PLATE (Y-9449)		VERTICAL WEAR PLATE (Y-9450)	
AIR BRAKE MFG.: NEW YORK AIR BRAKE CO.	AIR BRAKE SCHEDULE: ABO VALVE NYCORAC	BRAKE BEAM: NYAB N-8977 (INCLUDING PISTON)		BRAKE SHOES: R.F.P. V-141	
B-3, 8 1/2 UNITS A-1 REDUCTION RELAY VALVE	BODY CENTER PLATE: 13 3/4" FABRICATED (DWG. Y-8780)	GENERAL DWG: STD. CAR TRUCK 4125-B (DT. I. DWG. W-9431)		JOURNALS: 6 1/2" X 1/2" ROLLER BEARINGS	
BODY SIDE BEARING: HARDENED STEEL (DWG. Y-9291)	CENTER FILLER: SYM-WAYNE (DWG. W-9085)	JOURNAL BEARINGS: TIMKEN 6 1/2" X 12"		SIDE BEARINGS: STUCKI 608-B (DWG. Z-5017)	
CENTER SILL: 2, E-26 @ ST. 2 7/8" FT.	CENTER SILL AREA: 30.12 SQ. IN.	CARS: 26700 - 26736		D. T. & I.	
COMPARTMENTIZERS: EVANS PRODUCTS DB-302124	COUPLER: EAF MTE B BOT. OPERATED	MECHANICAL ENGINEERING DEPT.		1-22-70	
COUPLER CENTERING DEVICE: STANRAY-X-20973-6 (LINE 4)	COUPLER RELEASE RIGGING: STANRAY-4U-21061-E (LINE 5)	REVISIONS			
CROSSOVER STEPTUS GYPSUM 66005-P	CUSHIONING DEVICE: ACF FREIGHTSAVER F-12				
END OF CAR, 13 3/8" TRAVEL IN BUFF, 1 5/8" IN DRAFT					



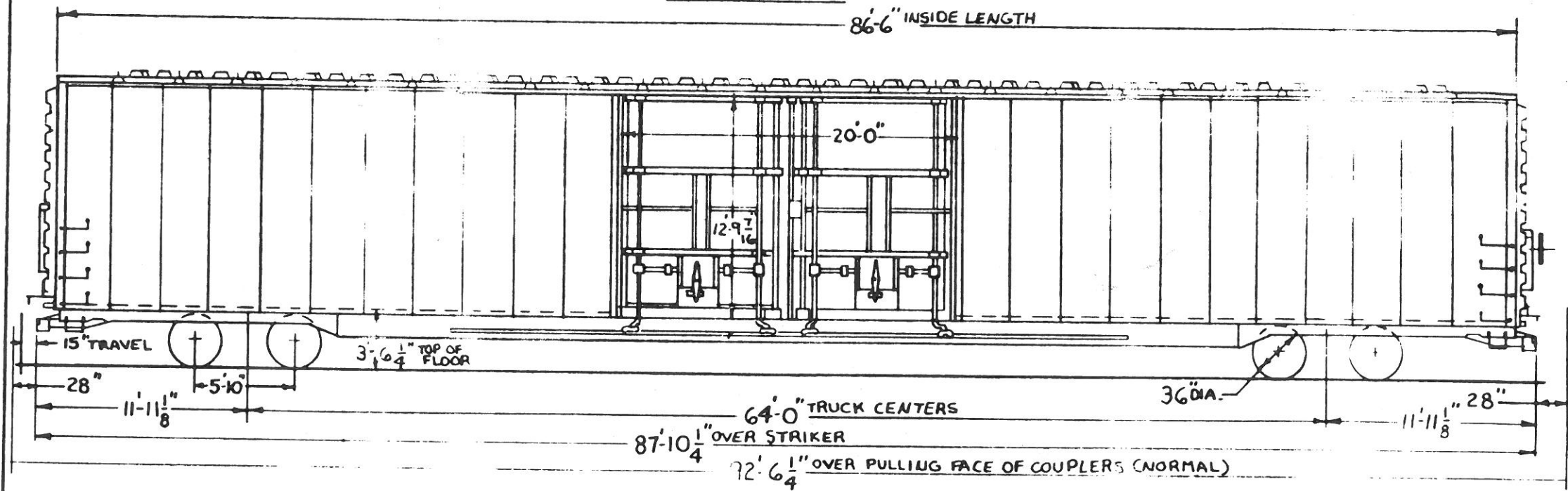
NOTE: THIS CAR EXCEEDS A.A.R CLEARANCE LIMIT OUTLINES PLATES "B & C"



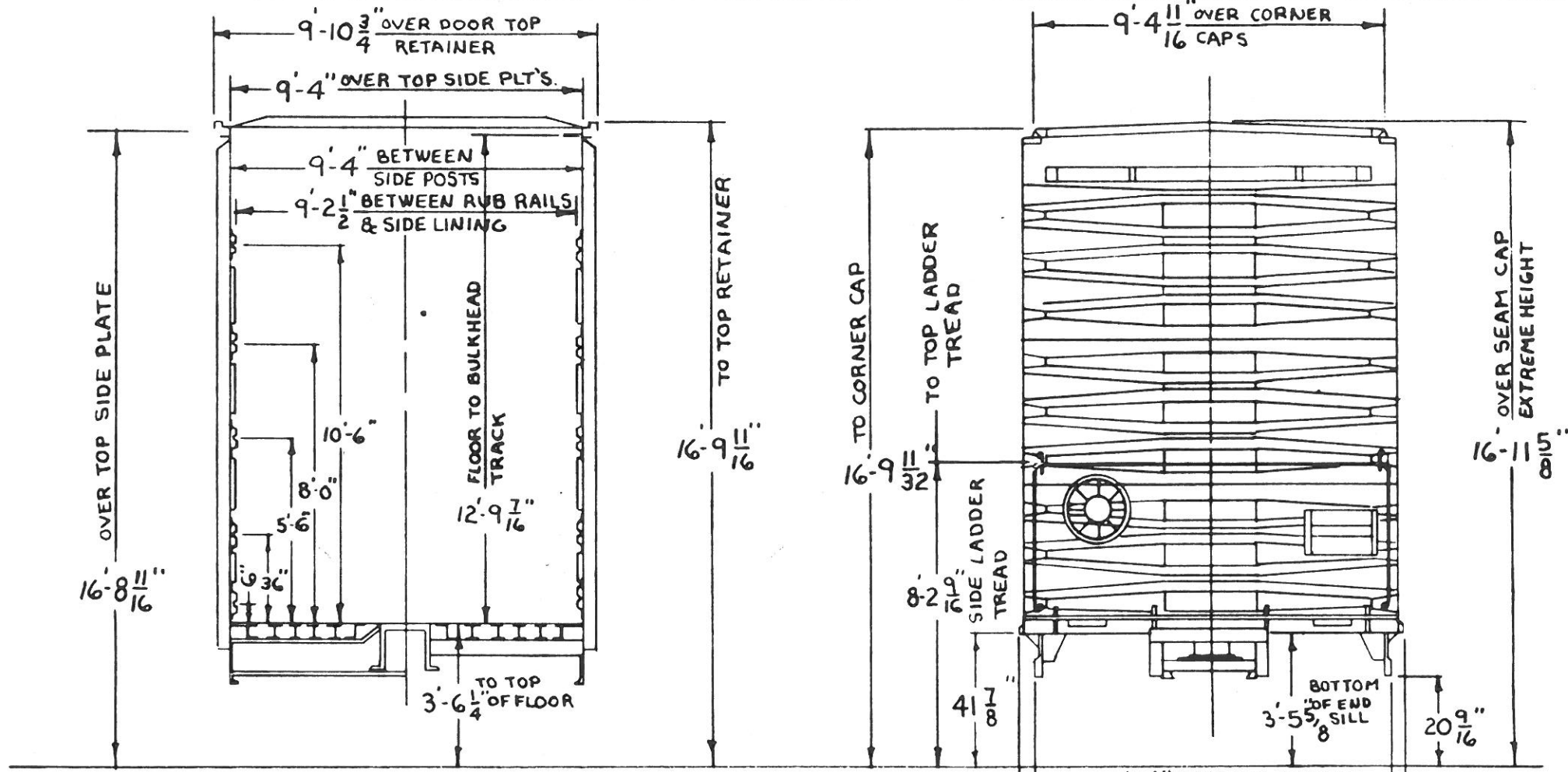
HAND BRAKE DIAGRAM

CARS: 26700-26736				
CLEARANCE DIAGRAM				
MECHANICAL ENGINEERING DEPT. 1-26-70				
— REVISIONS —				

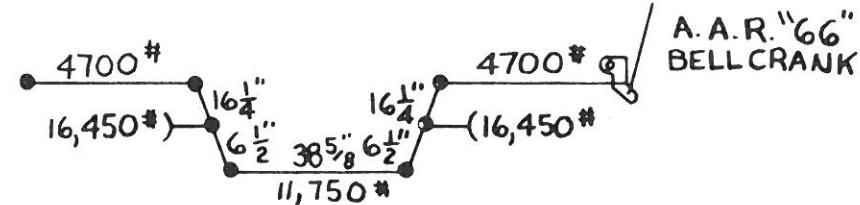
74 TON BOX



- GENERAL -		LESSOR C.I.T. LEASING CORP. LEASE 4342 TERM 6-14-86	
BUILDER: GREENVILLE STEEL CAR CO.	DOOR AND FIXTURES: YOUNGSTOWN DOUBLE PLUG (ALUM.) DWG. V-10109 (OPENS FROM INSIDE OR OUTSIDE)	SIDE FRAME: A.A.R. CODE-NONE ASF PATT. NO. 22141-E	
YEAR BUILT: 1971	ENDS: STANRAY SE-19051-B (DT&I DWG. V-8789) TOP SHEET	DT&I DWG. W-10547, AAR IDENT. NO. 5017 NARROW PEDESTAL	
BUILDERS REF.: 0.0.1015	5/32" INTERMEDIATE SHEET 3/16" BOTTOM SHEET 3/16"	SIDE FRAME WEAR PLATE: BOLT ON TYPE (DWG. X-9784)	
A.A.R. CLASS: XL	END SILL: 6" x 3 1/2" x 3/8" ANGLE ASTM A-36	SPRINGS: A.A.R. D-5, 14 OUTER, 12 INNER PER TRUCK	
NO. BUILT: 17	FLOOR: 1/4" PLATE TRI-TENASTMA WITH ANTI-SKID PAINT	TYPE OF TRUCK: BARBER S-2-C 6 1/2" x 12" STABILIZED	
CAPACITY: 10,000 CU. FT.	GENERAL DWG: GSC 34546-A (DT&I DWG. V-10445)	EQUIPPED FOR TRUCK MOUNTED BRAKES	
AVE. LT. WT.: 115,000 LBS.	HAND BRAKE: EILCON-NATIONAL D-1600-2L (1966)	AND NARROW PEDESTAL ROLLER BEARINGS	
AVE. LOAD LIMIT: 148,000 LBS.	LINING: END-3/16" STEEL PLATE ASTM A-569 (20% COPPER)	WHEELS: 36" ONE WEAR WROUGHT STEEL, H-36	
- BODY -		- TRUCK -	
AIR BRAKE MFG.: NEW YORK AIR BRAKE CO.	ROOF: STANRAY 4R-19052-C (LINE 1) DT&I DWG. W-8790	BOLSTER: A.A.R. CODE-NONE, ASF PATT. NO. 22257-KN	
AIR BRAKE SCHEDULE: ABD VALVE NYCOPAC B-3.8 1/2"	SIDE PLATE: 8" x 4" x 1/2" ANGLE ASTM A-36	DT&I DWG. W-10546, AAR IDENT. NO. 2047 (RB)	
UNITS A-1 REDUCTION RELAY VALVE	SIDE SILL: 3 1/2" x 3 1/2" x 3/8" ANGLE ASTM A-36	BOLSTER CENTER PLATE: HORIZONTAL WEAR PLATE-Z-8692	
BODY CENTER PLATE & FILLER: INTEGRAL BUCKEYE PATT. NO. 31-79-X (DT&I DWG. W-9678)	SIDE SILL REINF.: 15" @ 33.9" FT. & 10" @ 24.9" FT. CHANNEL BOTH ASTM A-572 GR. 50, TYPE 2	VERTICAL WEAR PLATE-Y-9450	
BODY SIDE BEARING: STUCKI #791 (DT&I DWG. Z-9676)	BRAKE BEAM: NYA.B. N-8977 (INCLUDING PISTON)		
CENTER SILL: 2, Z-26 @ 51.2 W/FT. ASTM A-572 GR. 50 TYPE 2	BRAKE SHOES: R.F.P. V-141 (COMPOSITION)		
CENTER SILL AREA: 30.12 SQ. IN.	GENERAL DWG: ASF 74728 - (DT&I W-10548)		
COMPARTMENTIZERS: EVANS PRODUCTS DB-302249	JOURNALS: 6 1/2" x 12" ROLLER BEARINGS		
COUPLER: E69 HTEG. BOTTOM OPERATED	JOURNAL BEARINGS: TIMKEN 6 1/2" x 12" 1-A		
COUPLER CENTERING DEVICE: STANRAY X-22525-C (V-9770)	SIDE BEARINGS: STUCKI CAR-B (DWG. Z-5017)		
COUPLER RELEASE RIGGING: STANRAY 4U-21064-H (W-8784)			
CROSSOVER STEP: U.S. GYPSUM G6005-P (DT&I X-11145)			
CUSHIONING DEVICE: KEYSTONE END-OF-CAR TYPE			
EQ-15-LR, 15" TRAVEL IN BUFF, 0" TRAVEL IN BUFF			
		CARS: 26750-26766	
		D. T. & I.	
		MECHANICAL ENGINEERING DEPT. DEC. 20, 1971	
		- REVISIONS -	



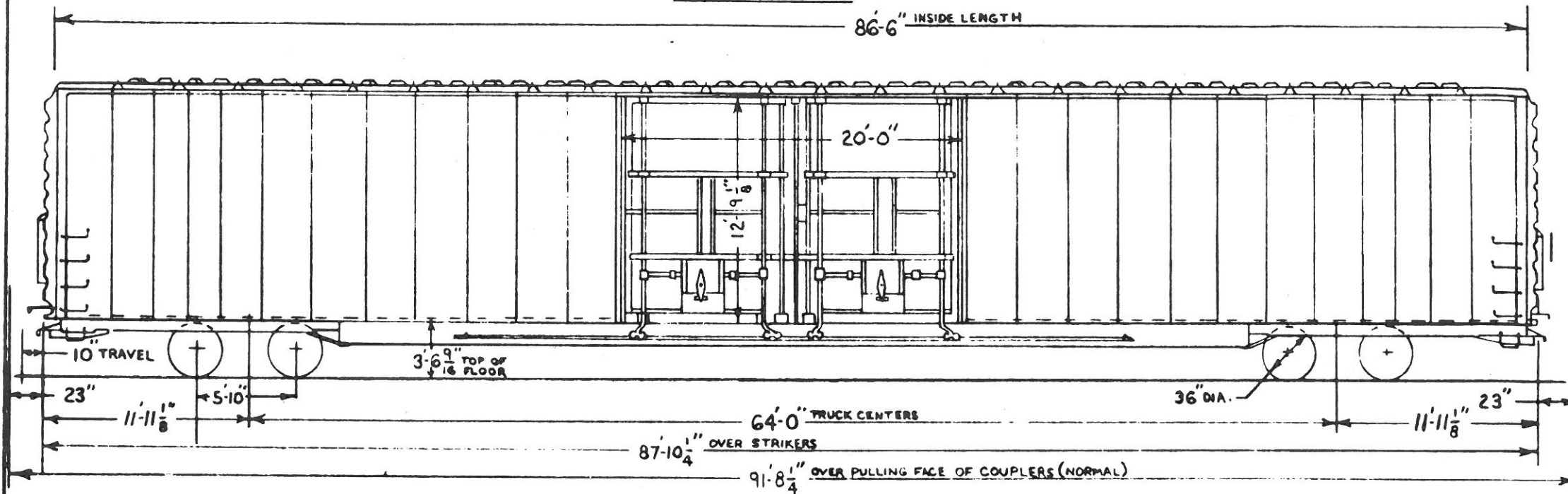
NOTE: THIS CAR EXCEEDS A.A.R. CLEARANCE LIMIT OUTLINES PLATES "B&C"



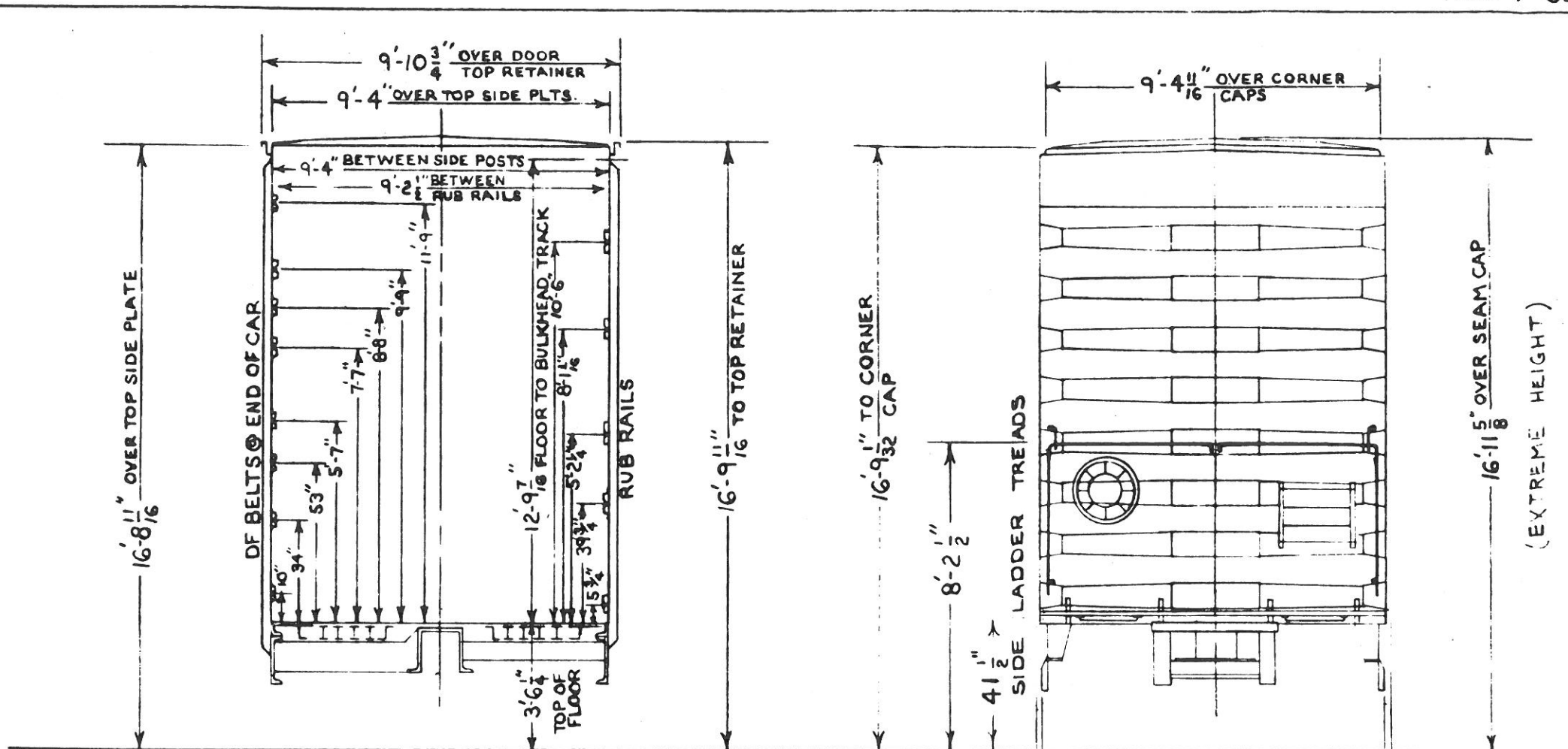
HAND BRAKE DIAGRAM

CARS: 26750-26766				
CLEARANCE DIAGRAM				
MECHANICAL ENGINEERING DEPT. DEC. 21, 1971				
— REVISIONS —				

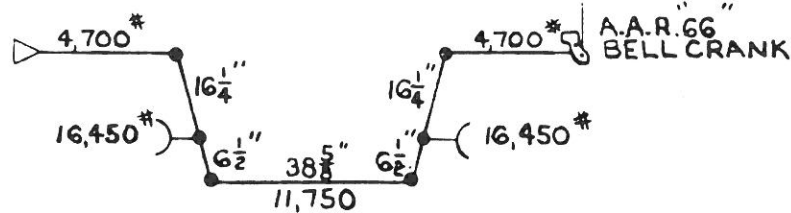
74 TON BOX CAR



RANDOM CARS		LESSOR	U.S. LEASING INTERNAL	LEASE: 4267	TERM: 3-24-85
		LESSOR	U.S. LEASING INTERNAL	LEASE: 4278	TERM: 7-1-85
— GENERAL —		87.1420-N (D.T.&I. W-9680) 9" TRAVEL IN BUFF, 1" TRAVEL DRAFT		SIDE BEARINGS: STUCKI 688-B (D.T.&I. DWG. Z-5817)	
BUILDER: GREENVILLE STEEL CAR CO.		DOOR AND FIXTURES: YOUNGSTOWN DOUBLE PLUG (ALUM)		SIDE FRAME: A.A.R. CODE - NONE BUCKEYE PATT. NO.	
YEAR BUILT: 1970		OPENS FROM INSIDE OR OUTSIDE (DWG. V-10061)		F-1097 (D.T.&I. DWG. W-9679) A.A. IDENT. NO. B-5046	
BUILDERS REF: 997		ENDS: STANRAY SE-19051-B (D.T.&I. DWG. V-8789) TOP SHEET 3/8"		NARROW PEDESTAL	
A.A.R. CLASS: XL		INTERSHEET 3/16" BOTTOM SHEET 3/16"		SIDE FRAME WEAR PLATE: BOLT ON TYPE (DWG. X-9784)	
NO. BUILT: 54		END SILL: 6" x 4" x 3/8" ANGLE		SPRINGS: A.A.R. D-5 14 OUTER 10 INNER COILS PER	
CAPACITY: 10,000 CU. FT.		FLOOR: 4" PLATE ASTM A-441 STEEL ANTI-SKID PAINT		TRUCK, TYPE OF TRUCK: BARBER S-2-C 6 1/2" x 12"	
AVE. LT. WT: 113,800 LBS.		GENERAL DWG.: C-34108 - (D.T.&I. DWG. V-10040)		STABILIZED EQUIPPED FOR TRUCK MOUNTED	
AVE. LOAD LIMIT: 149,200 LBS.		HAND BRAKE: ELLCON - NATIONAL D-1800-2 (1966)		BRAKES, NARROW PEDESTAL ROLLER BEARINGS	
		LINING: END 3/16" STEEL PLATE ASTM A-569		WHEELS: 36" 2 WEAR CAST STEEL CJ-36	
— BODY —		SIDE - RUDNAILS - WESTERN RY DEVICES (DWG. C-16727)			
AIR BRAKE MFG.: NEW YORK AIR BRAKE CO.		ROOF: STANRAY 4R - NOS 2-C (LINE 1) (D.T.&I. DWG. W-8790)			
AIR BRAKE SCHEDULE: ABD VALVE NYGDAC B-3 8 1/2" UNIT		SIDE PLATE: 8" x 4" x 3/8" ANGLE			
(N-8482) A-1 REDUCTION RELAY VALVE		SIDE SILL: 3 1/2" x 3 1/2" x 3/8" ANGLE			
BODY CENTER PLATE & FILLER: INTEGRAL - BUCKEYE PATT. NO.		SIDE SILL REINFORCEMENT: 15" @ 33.4" FT. AND 10" @ 24.9" FT.			
31-794 (D.T.&I. DWG. W-9678)		CHANNELS ASTM A-572-50 STEEL			
BODY SIDE BEARING: PITT FORM D-1208 (D.T.&I. Z-9678)		— TRUCK —			
CENTER SILL: 2, 2-26 (S1.2) FT ASTM A-572-50		BOLSTER: A.A.R. CODE: NONE, BUCKEYE PATT. NO. -		CARS: 26800-26853	
CENTER SILL AREA: 30.12 SQ. IN.		B-10076 (D.T.&I. DWG. V-9451) A.A.R. IDENT. NO. B-1921 (R)			
COMPARTMENTIZERS: EVANS PRODUCTS DB 30223G		BOLSTER CENTER PLATE: HORIZONTAL WEAR PLATE (Z-8472)		D.T. & I.	
COUPLER: EGHTED - BOTTOM OPERATED		VERTICAL WEAR PLATE (Y-9450)			
COUPLER CENTERING DEVICE: STANRAY TC-28525-B (V-9778)		BRAKE BEAM: NYAB N-8977 (INCLUDING PISTON)		MECHANICAL ENGINEERING DEPT. 4-28-70	
COUPLER RELEASE MOUNTING: STANRAY 4U-21074-G (2)		BRAKE SHOES: R.F.P.V. - 141			
CROSSCARS: EVANS PRODUCTS: DP - 204564		GENERAL DWG.: BSC C-10809-D (D.T.&I. X-9877)		— REVISIONS —	
CROSSOVER: 17TP: U.S. GYPSUM 68008-P (D.T.&I. DWG. X-1145)		JOURNALS: 6 1/2" x 12" ROLLER BEARINGS			
CUSHIONING DEVICE: FREIGHTMASTER, END-OF-CAR -		JOURNAL BEARINGS: SKF 6 1/2" x 12" - 48			



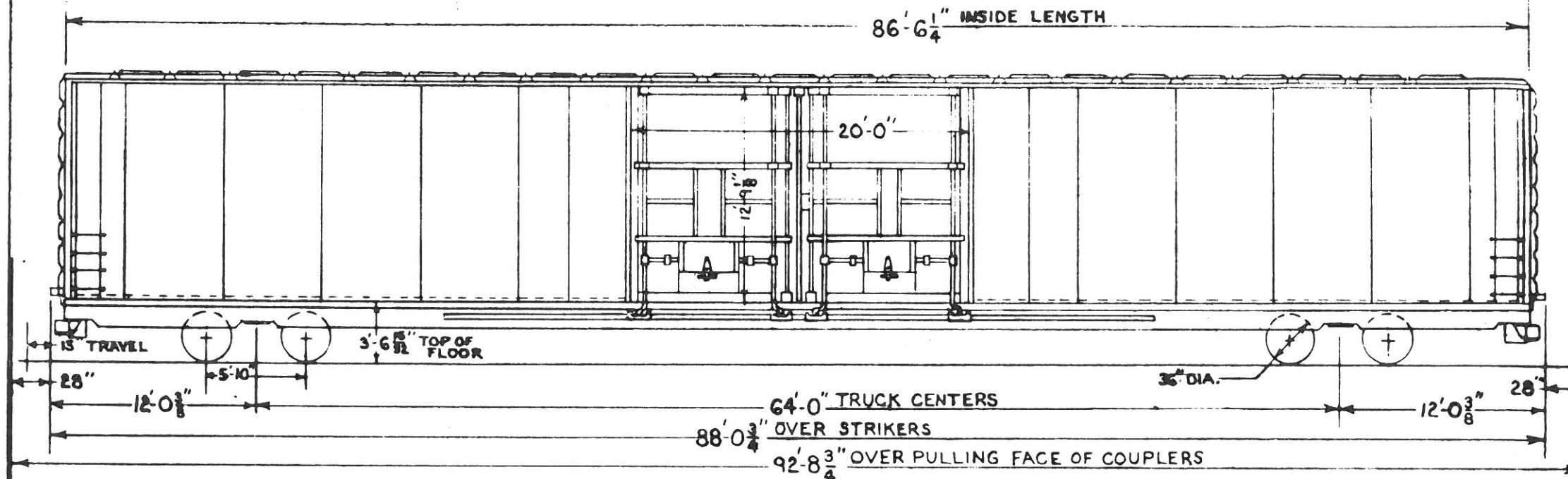
NOTE: THIS CAR EXCEEDS A.A.R. CLEARANCE OUTLINE PLATES "B" & "C"



HAND BRAKE DIAGRAM

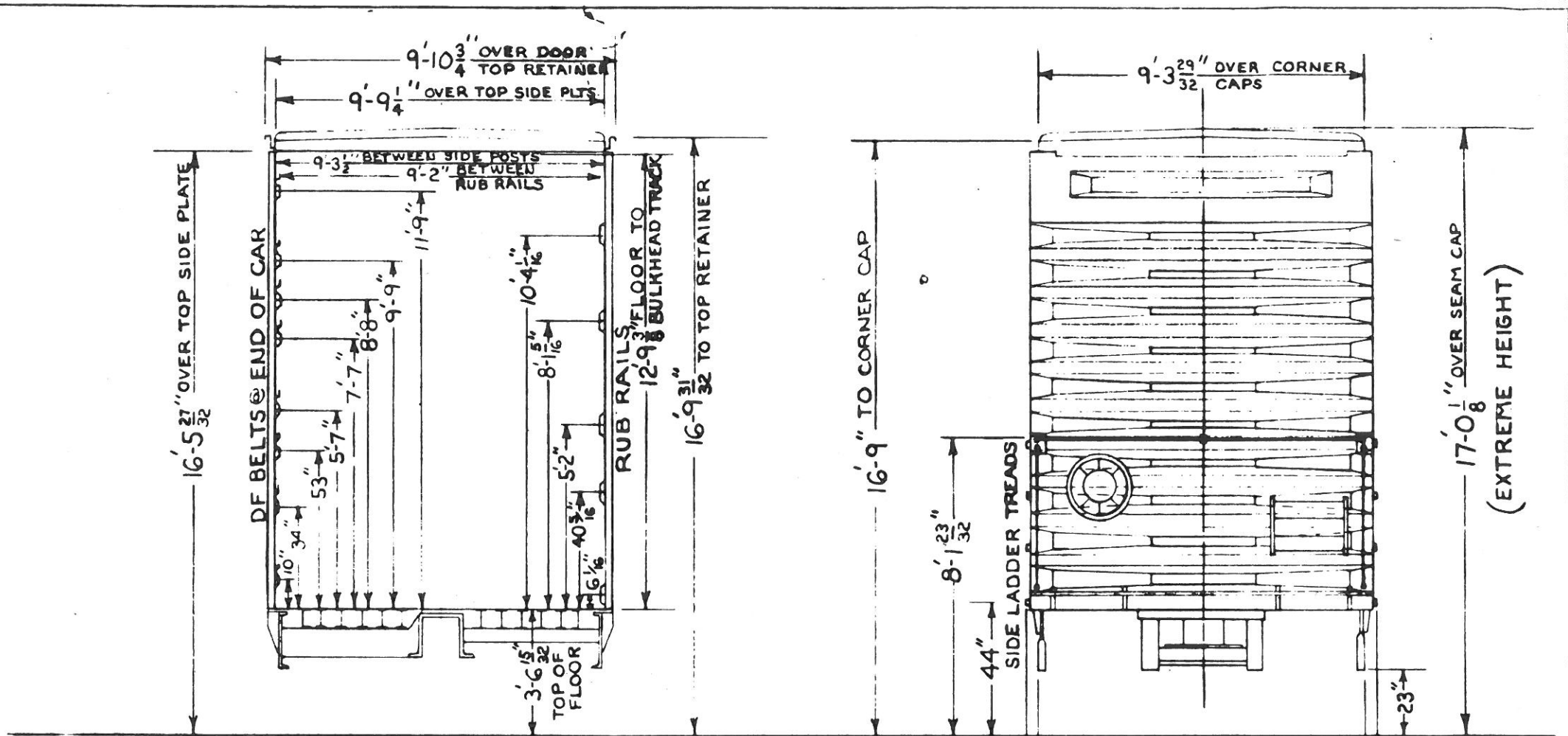
CARS: 26800-26853				
CLEARANCE DIAGRAM				
MECHANICAL ENGINEERING DEPT.			7-8-70	
~ REVISIONS ~				

— 72 TON BOX CAR —

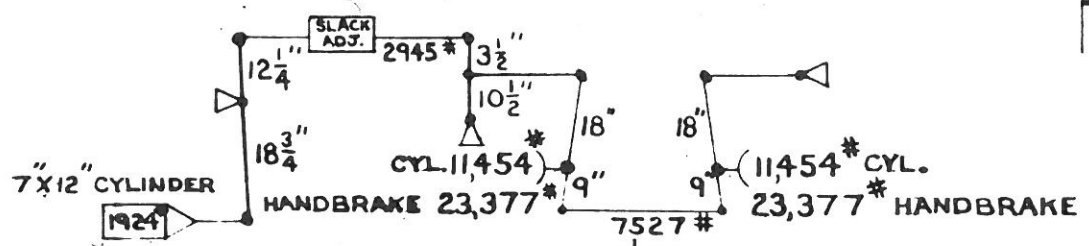


LESSOR FORD MOTOR CREDIT CO LEASE: 4303 TERM 6-9-85

- GENERAL -		87.21060(DWG.) 14" TRAVEL IN BUFF 5/8" TRAVEL IN DRAFT	JOURNAL BEARINGS: TIMKEN 1A OR SKF 4-B
BUILDER: PENN CENTRAL		DOOR AND FIXTURES: YOUNGSTOWN DOUBLE PLUG ALUMINUM (OPENS FROM INSIDE OR OUTSIDE)	SIDE BEARINGS: UNITY "NO SWAY"
YEAR BUILT: 1970		YOUNGSTOWN DWG. 70-41569 (DT&I DWG)	SIDE FRAME: A.A.R. CODE - NONE, BUCKEYE PATT. NO. F-1097 (D.T.&I. DWG. W-9679) A.A.R. IDENT. NO. B-5046 NARROW PEDESTAL
BUILDERS REF.: X-67		END: TOP SHEET PC C-464960, BOTT. SHEET PC C-464961	SIDE FRAME WEAR PLATE:
A.A.R. CLASS: XL		END SILL: 6" x 3 1/2" x 3/8" ANGLE	SPRINGS: A.A.R. D-B 14 OUTER & 14 INNER PER TRUCK
NO. BUILT: 14		FLOOR: 1/2" STEEL	
CAPACITY: 10,000 CU. FT.		GENERAL DWG.: A-464940-A	
AVE. LT. WT.: 118,300 LBS.		HAND BRAKE: UNIVERSAL 7400-3	TYPE OF TRUCK: BARBER S-2-C 6 1/2" x 12" STABILIZED NARROW PEDESTAL ROLLER BEARING
AVE. LOAD LIMIT: 144,700 LBS.		LINING: END 3/16" STEEL PLATE	WHEELS: 36" DIAM
- BODY -		SIDE: RUB RAILS PENN CENTRAL C-434969	
AIR BRAKE MFG: NEW YORK AIR BRAKE		ROOF: PENN CENTRAL	
AIR BRAKE SCHEDULE: ASD-7" x 12" UA CYLINDERS (2)		SIDE PLATE: 3" @ 6 7/8" FT. AND 5" x 3" x 1/2" ANGLE COMBINATION	
A-1 REDUCTION RELAY VALVE		SIDE BILL: 6" x 6" x 1/8" ANGLE	
BODY CENTER PLATE & FILLER: INTEGRAL BUCKEYE PATT. NO. 31-79X (DT&I DWG W-8678)		SIDE SILL REINFORCEMENT: 15" @ 33.9" FT. CHANNEL	
BODY AND DRAWING:		SLACK ADJUSTERS: SLOAN 4600-DJ	
CENTER SILL: 2, 2-26 @ 51.2" / FT.			
CENTER SILL AREA: 30.12 SQ. IN.		- TRUCK -	
COMPARTMENTIZERS: EVANS PRODUCTS DB-302236		BOLSTER: A.A.R. CODE - NONE, A.B.F. PATT. NO. 22256-DD (D.T.&I. DWG. W-9776) A.A.R. IDENT. NO. 2117	CARS: 26886-26899
COUPLER: HTE 6 BOTT. OPER. (DWG W-9452)		BOLSTER CENTER PLATE: HORIZONTAL WEAR PLATE (Z 8692) VERTICAL WEAR PLATE (Y-9450)	D.T. & I.
COUPLER CENTERING DEVICE: STANRAY 7C-22528-B			MECHANICAL ENGINEERING DEPT. 7-9-70
COUPLER RELEASE RIGGING: STANRAY 4U-21064		BRAKE BEAM: A.A.R. #24 UNIT TYPE	- REVISIONS -
CROSSLINER: LYANS PRODUCTS DF-204564		BRAKE SHOES: 2" COMPOSITION V-139 OR H4A	
CROSSOVER STEP: U.S. GYPSUM 66006-P		GENERAL DWG.: PC CLASS 2F-F37	
CUSHIONING DEVICE: FREIGHTMASTER HD-F(E.O.C)		JOURNALS: 6 1/2" x 12" ROLLER BEARINGS	

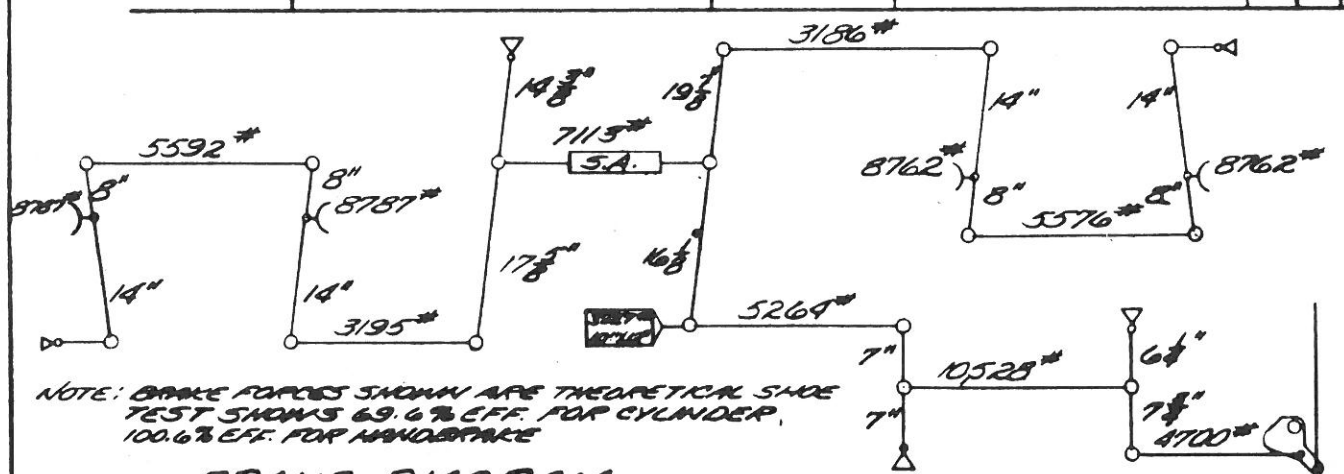
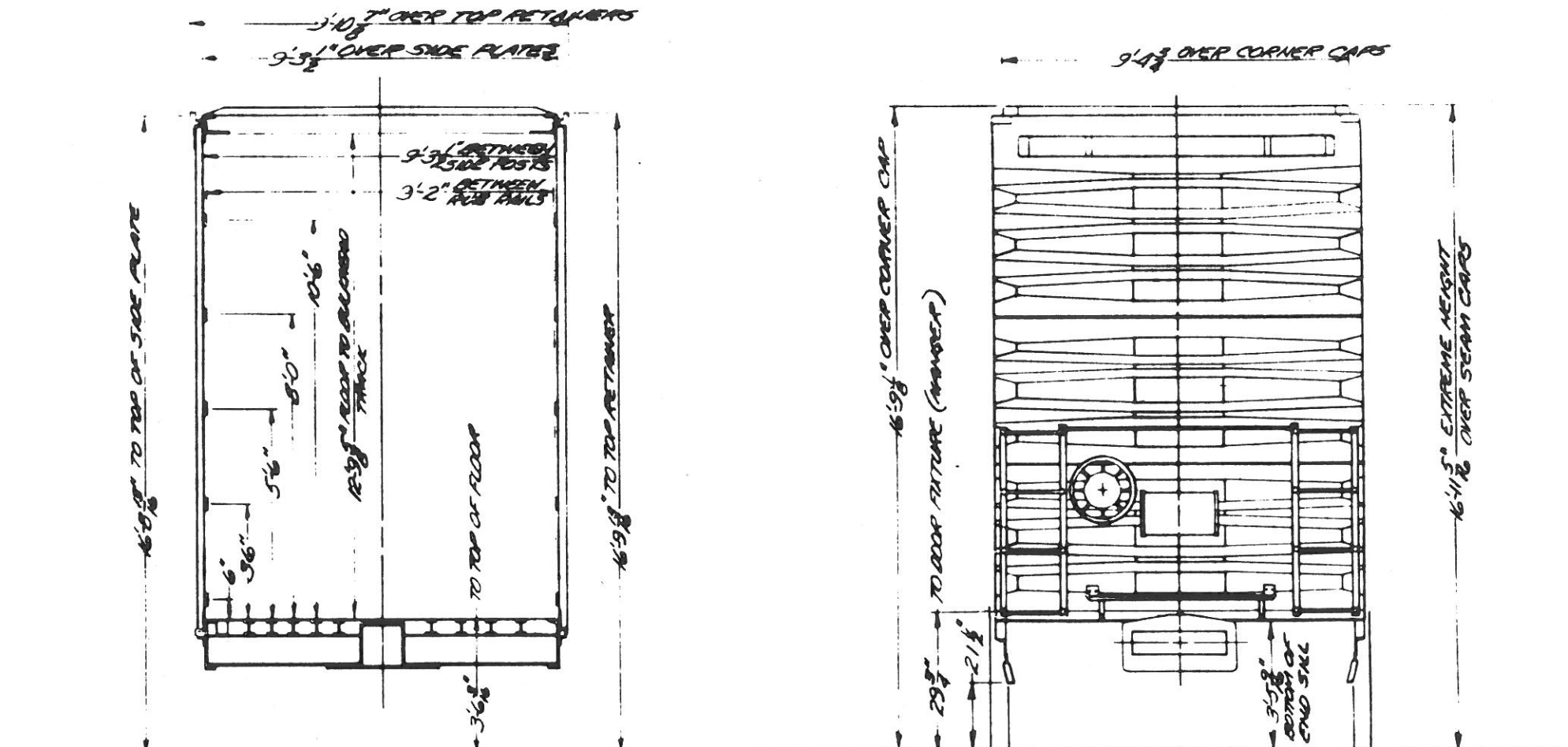


NOTE: THIS CAR EXCEEDS A.A.R. CLEARANCE OUTLINE PLATES "B" & "C"



BRAKE DIAGRAM FOR 1/2 OF CAR

CARS: 26886-26899				
CLEARANCE DIAGRAM				
MECHANICAL ENGINEERING DEPT. 9-4-70				
~ REVISIONS ~				



NOTE: BRAKE FORCES SHOWN ARE THEORETICAL. SHOE TEST SHOWS 69.6% EFF. FOR CYLINDER, 100.6% EFF. FOR HANDSPACE

BRAKE DIAGRAM

NOTE: THIS CAR EXCEEDS AAR CLEARANCE LIMIT OUTLINES PLATES 'B' & 'C'. THIS CAR EQUIPPED WITH STANDARD BOX CAR SAFETY APPLIANCES.

BOX: 27000-27134	
CLEARANCE DIAGRAM	
MECHANICAL ENGINEERING DEPT.	5-18-74
REVISIONS	

AAR '66 BELL CRANK