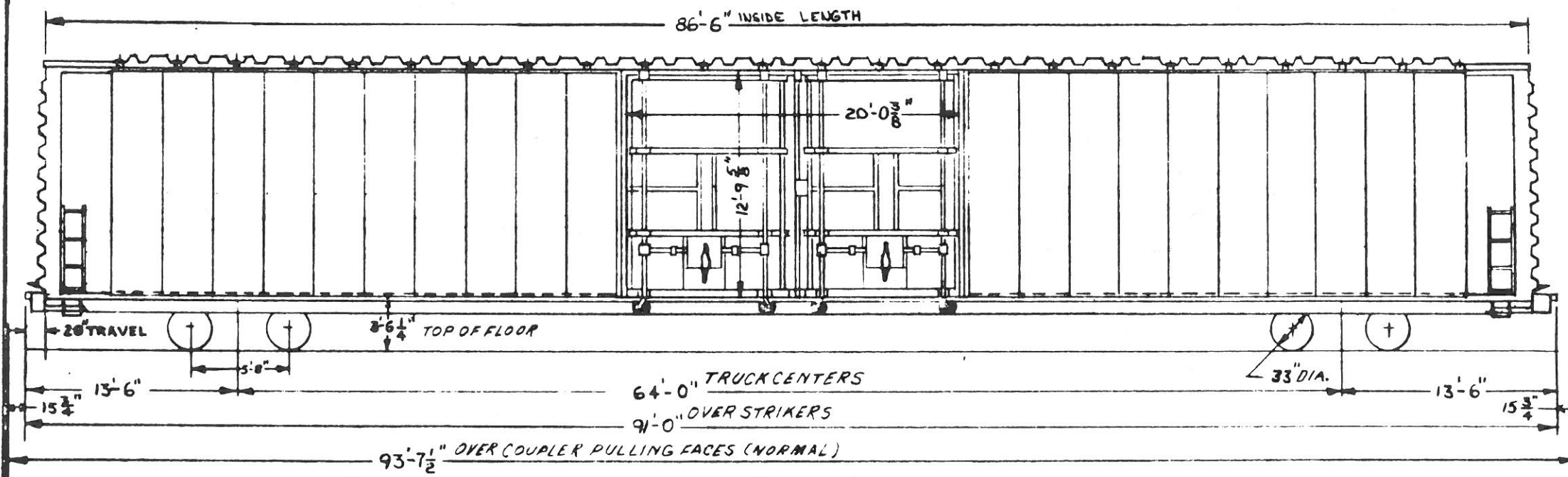
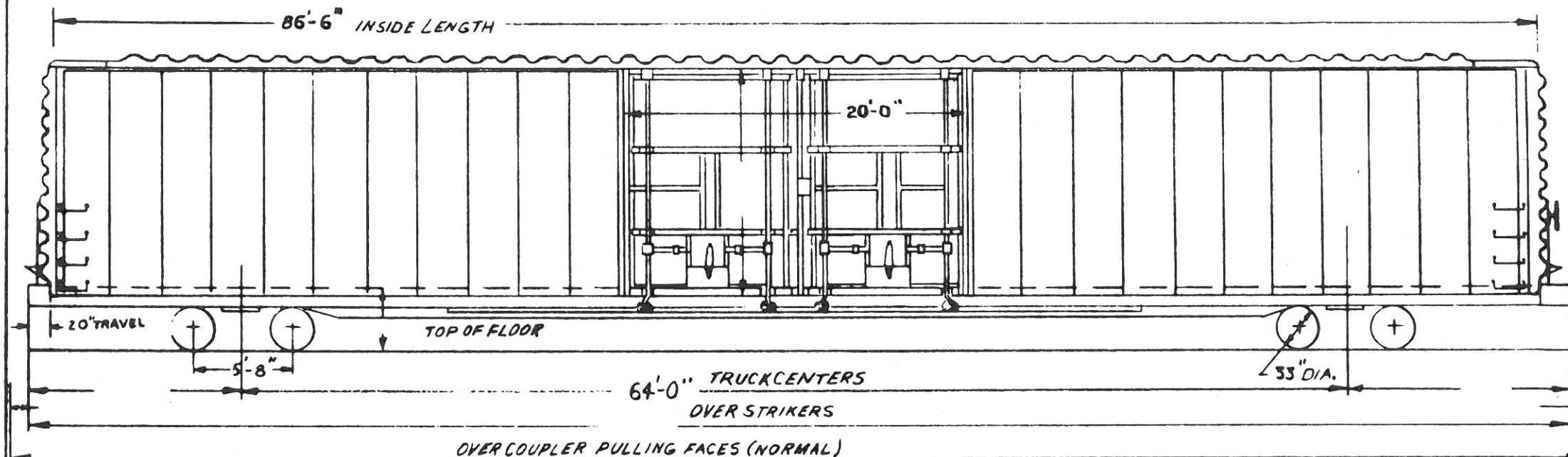


- 50 TON BOX -



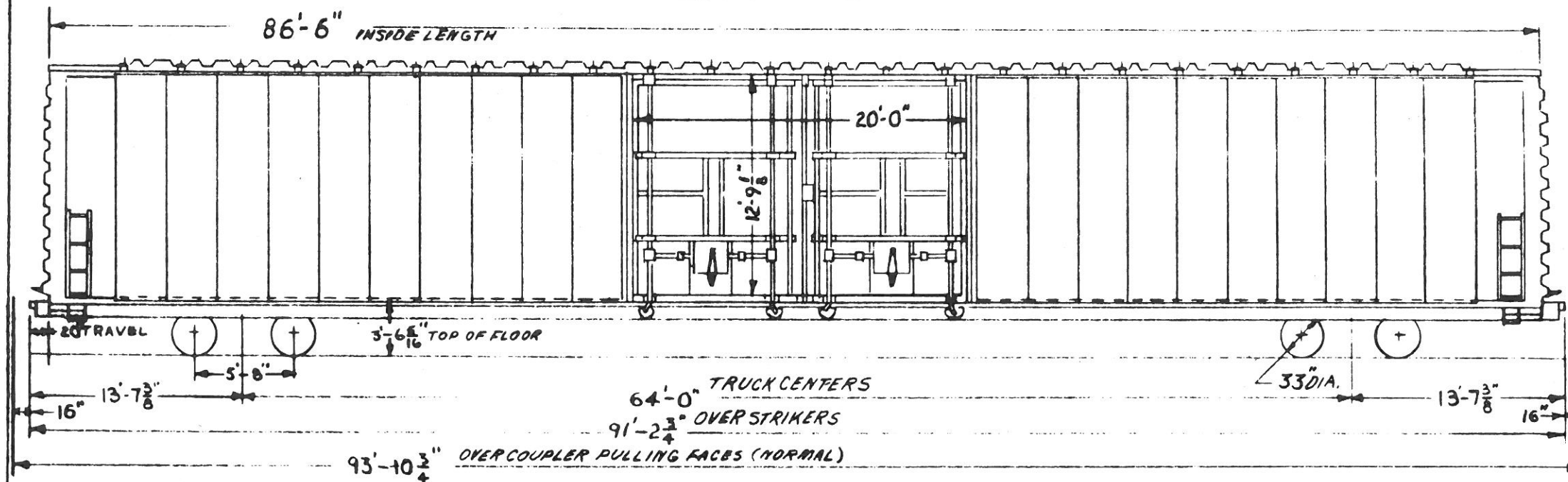
PAINTING		69000 SUB LEASED TO SOJ LINE	
BODY	ORANGE	DUPONT 83-5546	
STENCIL	BLACK	DUPONT 83-005	WHITE C.P.
- GENERAL -		CUSHIONING DEVICE: KEYSTONE (20" TRAVEL)	BRAKE BEAM: WAB UNIT 562947 (INCLUDING PISTON)
BUILDER: THRALL CAR MFG. CO.		DOORS & FIXTURES: YOUNGSTOWN	BRAKE SHOES: R.F.P. V-141
YEAR BUILT: 1964		DRAFT GEAR:	GENERAL DWG.:
BUILDERS REF.: 170-G		DRAFT GEAR ATTACHMENTS:	JOURNALS: 6"X11" ROLLER BEARING
A.A.R. CLASS: XL		ENDS: STANRAY 5E-18282-F TOP SHEET 5/32"	JOURNAL BEARINGS: TIMKEN 6"X11" 1
NO. BUILT: 3 (ORIGINALLY G.B.W. 100-102)		INTERMEDIATE SHEET 3/16"	SIDE BEARINGS:
CAPACITY: 10,000 CU. FT.		BOTTOM SHEET 3/16"	SIDE FRAME: A.A.R. CODE F75-02BN-UA NAT'L CASTINGS
AVE. LT. WT.: 112,700 LBS.		END SILL: 6"X3 1/2"X3/16" ANGLE	PAT. NO. 43931-4 (D.T.E. DWG. V-8098) A.A.R.
AVE LOAD LIMIT: 107,300 LBS		FLOOR: 3/16" PLATE WITH ANTI-SKID COATING	IDENT. NO. B-943
- BODY -		GENERAL DWG: THRALL B-1820-G	SPRINGS: A.A.R. D-3 10 OUTER, 10 INNER COILS PER TRUCK
AIR BRAKE MFG:		HAND BRAKE: MINER D-3290-XL	TYPE OF TRUCK: BARBER S-2-A 6"X11" STABILIZED
AIR BRAKE SCHEDULE: AB, WABCO PAC B-3 7/4" UNITS		LINING: END 3/16" PLATE	NARROW FEDESTAL ROLLER BEARING
NO. 8 VENT VALVE		SIDE - RUB RAILS WEST. RY. EQUIP. CO.	TRUCK MOUNTED BRAKES
BODY CENTER PLATE: 13 3/4" CAST STEEL		ROOF: STANRAY 7R-1A284-D	WHEELS: 33" I WEAR WROUGHT STEEL J-33
WAUGH PAT. CG-4335		SIDE BEARING CENTERS: 4'-2"	
BODY SIDE BEARING:		SIDE PLATE: 5"X5"X1/2" ANGLE	
CENTER SILL: SLIDING: 2, B-26 @ 41.29"/FT. EX-TEN 50		SIDE SHEATING: 1/4" SHT. @ CORNER & DOOR POSTS	
STATIONARY: 13" @ 36 7/8" FT. CHANNEL HTLA		.10" SHT. - INTERMEDIATE SHEETS	
CENTER SILL AREA: SLIDING: 24.24 SQ. IN.		SIDE SILL: 3" @ 6.7 @ /FT. ZEE	
STATIONARY: 20.49 SQ. IN.		SIDE SILL REINFORCEMENT: 15" @ 33.9 @ /FT. CHANNEL	
COMPARTMENTIZER: EQUIPCO 221-H-14713			
COUPLER: EIGHTER, 60" FROM PULLING FACE TO PIN HOLE			
COUPLER RELEASE RIGGING: STANRAY 4U-4739-D			
(LINE 1)			
CROSSOVER STEP: APEX			
		- TRUCK -	
		BOLSTER: A.A.R. CODE:	PAT. NO.
		(D.T.E. DWG.)	A.A.R. IDENT. NO.
CARS: 69000 & 69012			
ANN ARBOR RAILROAD			
MECHANICAL ENGINEERING DEPT. 11-11-69			
- REVISION -			

- 50 TON BOX -

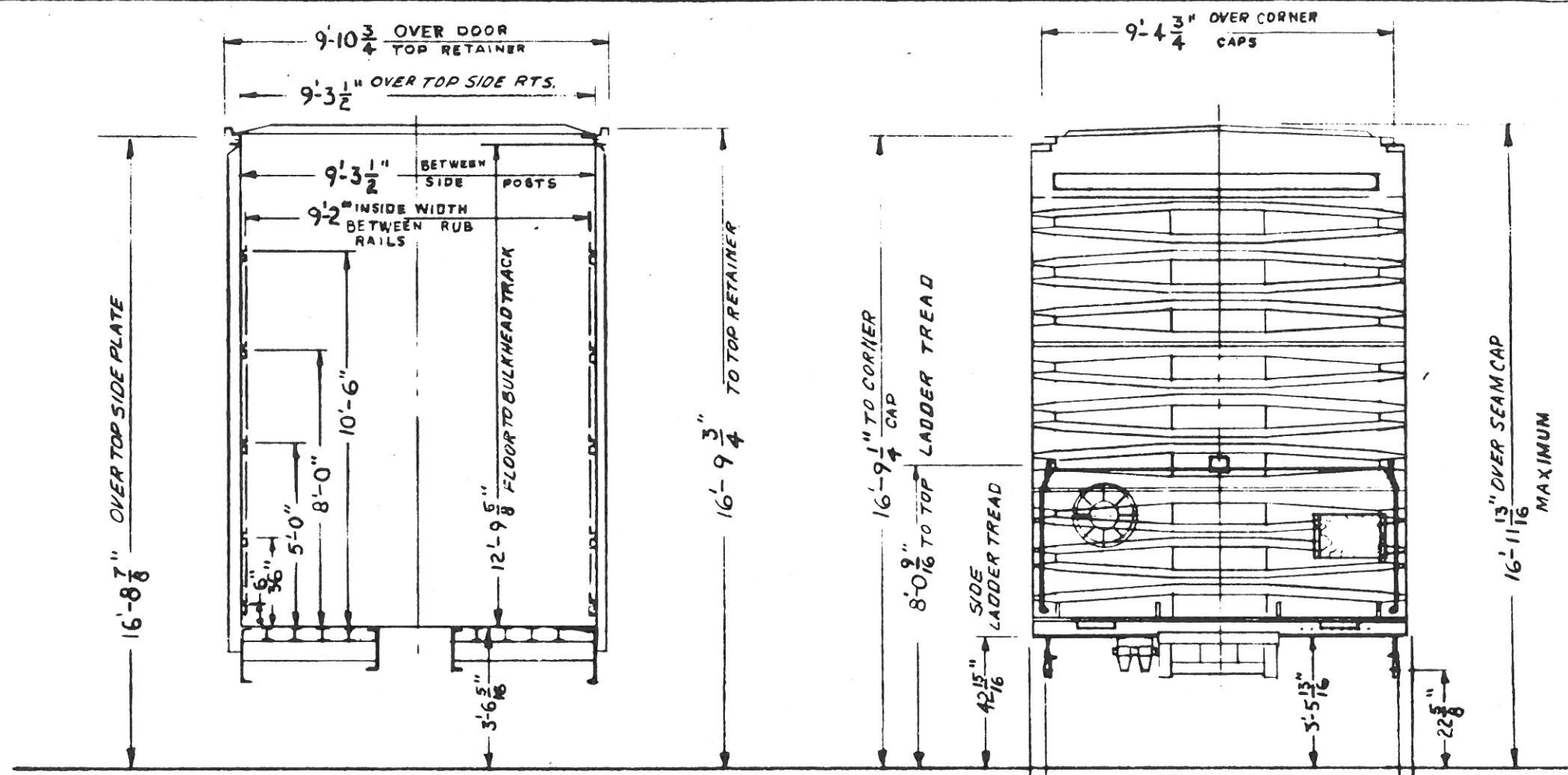


PAINTING				69001 & 69002 SUB LEASED TO SOO LINE	
BODY	ORANGE	DUPONT 83-5546		LESSOR	U.S. RY. LEASING CORP. LEASE 4181 TERM 2-5-84
STENCIL	BLACK	DUPONT 83-005	WHITE C.P.		
~ GENERAL ~			DOOR AND FIXTURES: YOUNGSTOWN DOUBLE PLUG (ALUM.)		JOURNALS: 6"X11" ROLLER BEARINGS
BUILDER: GREENVILLE STEEL CAR					JOURNAL BEARING: BRENCO 6"X11" 5-A
YEAR BUILT: 1965			BRAKE BEAM		
BUILDERS REP: O.O. BGI			DRAFT GEAR ATTMS		SIDE BEARINGS:
ARR CLASS: XL			ENDS: STANRAY 55-1901 (S.T. DWG. V-8788)		SIDE FRAMES: A.A.R. CODE
NO BUILT: 3 (ORIGINALLY GBW 103-105)			END SILL: 6"X3 1/2"X 1/2" ANGLE (DWG. Y-7490)		
CAPACITY: 10,000 CU. FT.			FLOOR:		SPRINGS: A.A.R. D-3
AVG. LT. WT: 115,000 LBS.			GENERAL DRAWING:		TYPE OF TRUCK: BARBER S-2-A, 6"X11" STABILIZED NARROW
AVG. LD. LIMIT: 105,000 LBS.			HAND BRAKE:		PEDESTAL ROLLER BEARINGS TRUCK MOUNTED BRAKES
~ BODY ~			LINING: END - 1/16" STEEL PLT. (DWG. Y-7456)		
AIR BRAKE MFG:			SIDE - RUB RAILS		
AIR BRAKE SCHEDULE: ADD VALVE W/ABCO PAC B-3, 7 1/2" UNITS. A-1 REDUCTION RELAX VALVE			ROOF: STANRAY 4R-1903-A (S.T. DWG. W-8790)		WHEELS: 33" 1 WEAR WROUGHT STEEL U-33
BODY CENTER PLT: 133" CAST STEEL, W/ANCH CG 4338			SIDE BEARING CTRG: 4'-2"		
BODY SIDE BEARING:			SIDE SILL:		
CENTER SILL:			SIDE PLATE:		
CENTER SILL AREA:			SIDE SHEATHING:		
			~ TRUCK ~		
COMPARTMENTIZER: EVANS DB-300192			BOLSTER: A.A.R. CODE		CARS: 69001, 002 AND 69007
COUPLER:					ANN ARBOR RAILROAD
COUPLER RELEASE RIGGING: STANRAY 4U-18695-G (LINE 2) (D.T. DWG. V-8111)					MECHANICAL ENGINEERING DEPT 10-27-69
CROSS OVER STEP:			BRAKE BEAM:		REVISION
CUSHIONING DEVICE:			BRAKE SHOES:		
			GENERAL DWG:		

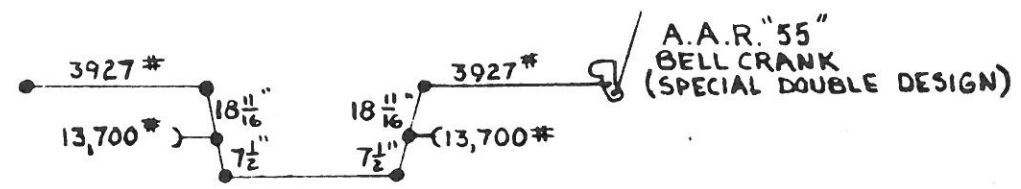
— 50 TON BOX —



PAINTING				69003 & 69004 SUB LEASED TO SOO LINE	
BODY	ORANGE	DUPONT 83-5546			
STENCIL	BLACK	DUPONT 83-005	WHITE	C.P.	
~ GENERAL ~			DOOR FIXTURES: YOUNGSTOWN DOUBLE PLUG (ALUM.)		BRAKE SHOES: R.F.P. V-141
BUILDER: THRALL CAR MFG. CO.			OPENS FROM INSIDE OR OUTSIDE		GENERAL DWG:
YEAR BUILT: 1956			Y.S.D. DWG. 65-27878-B (D.T. DWG. V-)		JOURNALS: 6" X 11" ROLLER BEARINGS
BUILDERS REF: 294-C			DRAFT GEAR: MINER A-22-XL		JOURNAL BEARINGS: TIMKEN 6" X 11" 1-A
A.A.R. CLASS: RL			DRAFT GEAR ATTACHMENT: HIGH TENSILE C.S. YOKE BY-45		SIDE BEARINGS: STUCKI 656-C (D.T. DWG. Y-1470)
NO. BUILT: 8 (ORIGINALLY G.B.W. 106-113)			END: STANRAY 5E-19211-C TOP SHEET 5/32"		SIDE FRAME: A.A.R. CODE: F7S-02 BN-UA N.C. PAT. NO.
CAPACITY: 10,000 CU. FT.			INTERMEDIATE SHEET 3/16"		43931-4-A (D.T. DWG. V-8098) A.A.R.
AVE. LT. WT.: 110,700 LBS.			BOTTOM SHEET 3/16"		IDENT. NO. 8-943
AVE. LOAD LIMIT: 109,300 LBS.			END SILL: 6" X 3 1/2" X 5/16" ANGLE		SPRINGS: A.A.R. D-3 10 OUTER 10 INNER COILS PER TRUCK
— BODY —			FLOOR: 1/4" PLATE TRI-TEN STEEL - ANTI-SKID COATING		TYPE OF TRUCK: BARBER S-2-A 6" X 11" STABILIZED
AIR BRAKE MFG:			GENERAL DWG: THRALL B-1908-E		EQUIPPED FOR ROLLER BEARINGS & TRUCK
AIR BRAKE SCHEDULE: ABD VALVE WABCO FAC B-3 7 1/2"			HAND BRAKE: AJAX 14685-B		MOUNTED BRAKES
UNITS A-1 REDUCTION RELAY VALVE			LINING: END: 3/16" STEEL		WHEELS: 33" WEAR WROUGHT STEEL J-33
BODY CENTER PLATE: 13 3/4" CAST STEEL WAGON CG-4340			SIDE: RUB RAILS EVANS DF2 BELT RAIL		
BODY SIDE BEARING: STUCKI #791 (DWG. Z-9290)			ROOF: STANRAY 7R-19070-F		
CENTER SILL: SLIDING: 2 #26 @ 41.2" FT. H.T.L.A.			SIDE PLATE: 8" X 4" X 1/2" ANGLE		
STATIONARY: 13" @ 35" FT. CHANNEL H.T.L.A.			SIDE SILL: 1/4" FORMED STEEL		
CENTER SILL AREA: SLIDING - 24.24 SQ. IN.			SIDE SILL REINFORCEMENT: 15" @ 33 1/2" FT. CHANNEL H.T.L.A.		
STATIONARY - 20.46 SQ. IN.			SIDE SHEATHING: 1/4" PLT. @ CORNERS DOOR POSTS, 3/16" PLT.		
COMPARTMENTIZER: PRECO			NEXT TO 1/4" PLT. - .10" REMAINING SHEETS		
COUPLER: E 69 HTEG, 60" FROM PULLING FACE TO PIN HOLE			— TRUCK —		
COUPLER CENTERING DEVICE: STANRAY 3C-19841-J			BOLSTER: A.A.R. CODE: B78-01HD-BN N.C. PAT. NO. 26442-7		
COUPLER RELEASE RIGGING: STANRAY 4V-19870-B			D.T. DWG. NO. YEAR IDENT. NO.		
CROSSOVER STEP: MORTON MFG. CO.			BOLSTER CENTER PLATE WEAR RING:		
CUSHIONING DEVICE: KEYSTONE 20" TRAVEL			BRAKE BEAM: W.A.B. UNIT #566260 (INCLUDING PISTON)		
					CARS: 69003, 04, 05, 06, 08, 09, 10, 11
					ANN ARBOR RAILROAD
					MECHANICAL ENGINEERING DEPT 12-2-69
					REVISION



NOTE: THIS CAR EXCEEDS A.A.R CLEARANCE LIMIT OUTLINES PLATES "B" & "C"



HAND BRAKE DIAGRAM

CARS: 69003, 04, 05, 06, 08, 09, 10, 11				
CLEARANCE DIAGRAM				
MECHANICAL ENGINEERING DEPT 12-3-69				
- REVISIONS -				