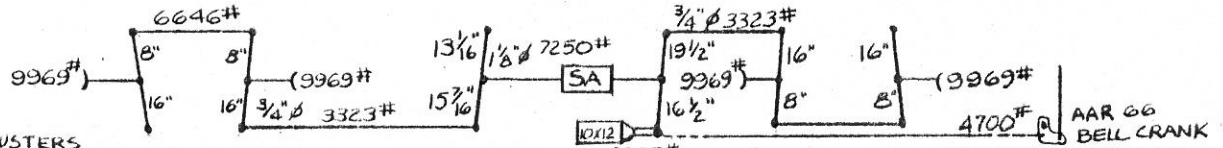
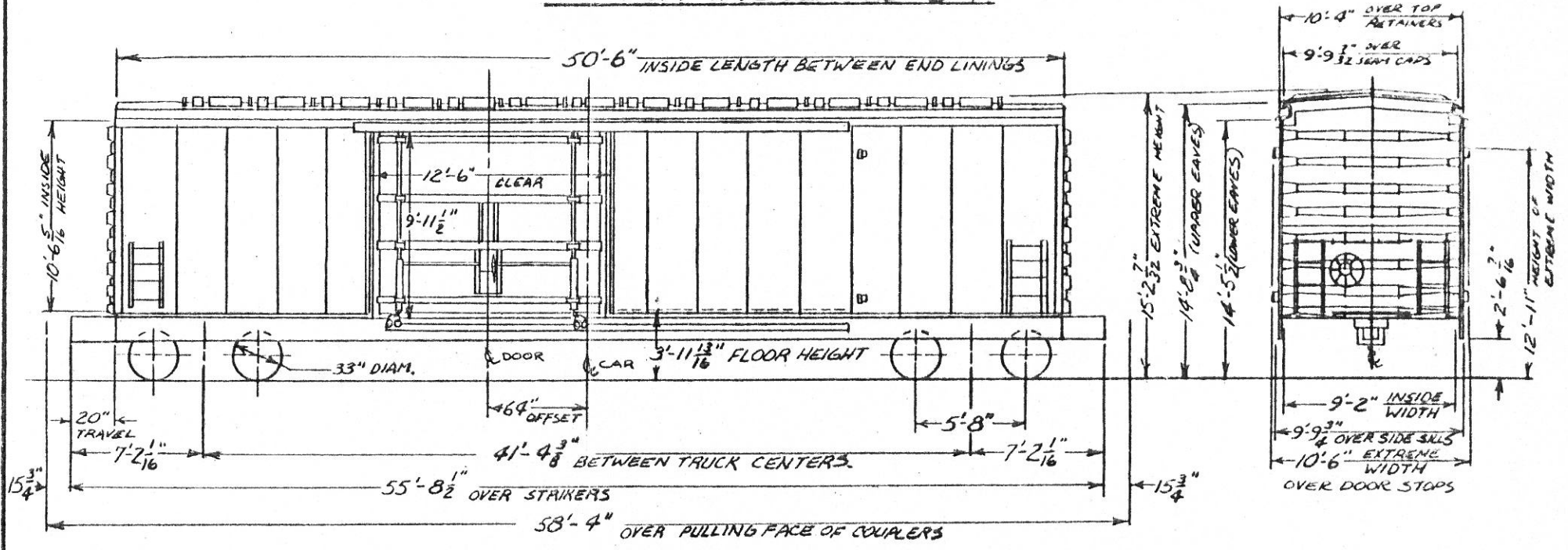


69 TON INSULATED BOX



SLACK ADJUSTERS
(20100-20171 & 20200-20272) - SAB
(20172-20199) - ELLON-NATIONAL

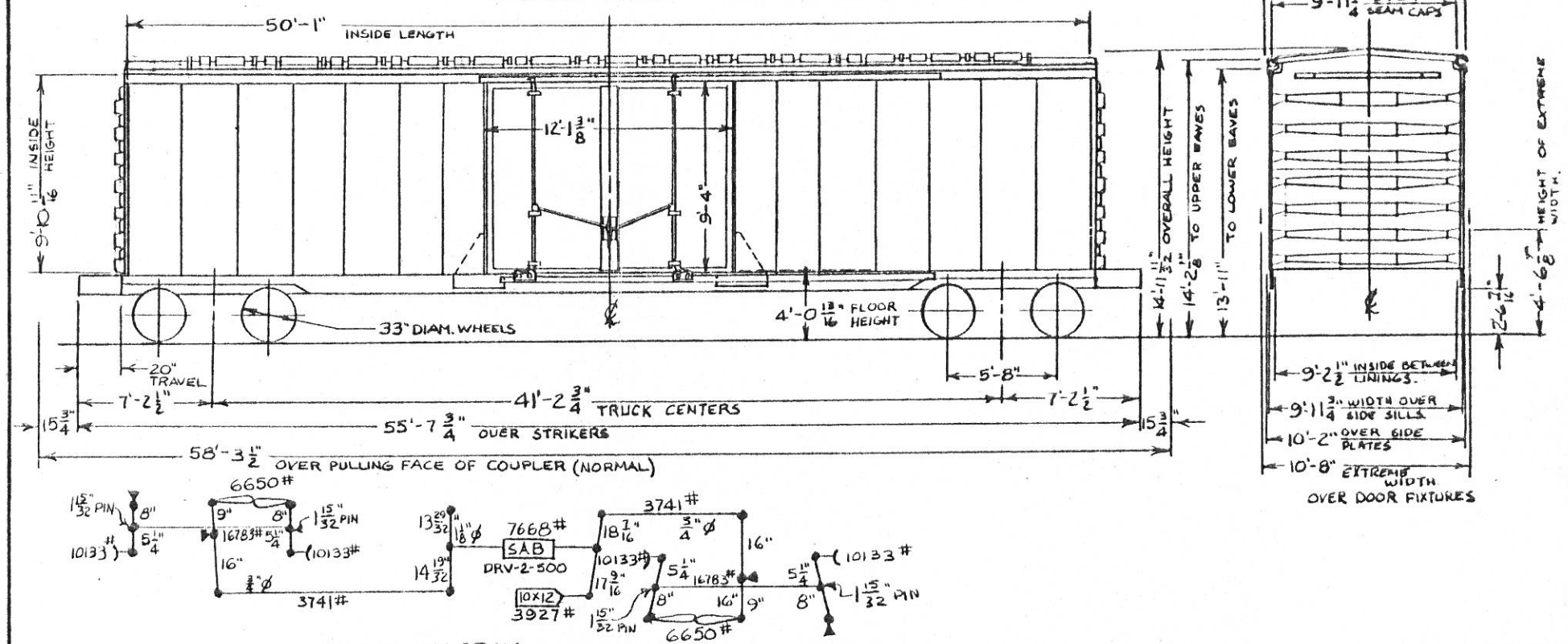
BRAKE DIAGRAM

LESSOR: FRUIT GROWERS EXPRESS

LEASE 20100-20199	TERM.
4640	
LEASE 20200-20272	TERM.
4679	
LEASE 20273-20278	TERM.
4680	

-GENERAL-	DRAFT GEAR: WALKMATE W11-C6-S	JOURNALS: 6"X11" ROLLER BEARINGS
BUILDER: FRUIT GROWERS EXPRESS CO.	DRAFT GEAR ATTACHMENT: DRAFT KEY	JOURNAL BEARINGS: HYATT 6-A OR TIMKEN 1-A
YEAR BUILT: 1969	ENDS: STANRAY SE-21655-B TOP SHEET 3/16" O.H.S.	SIDE BEARINGS: STUCKI 656-C
BUILDER'S REF: S-308	BOTTOM SHEET 1/4" O.H.S.	SIDE FRAME: (20100-20140 & 20200-20272)
A.A.R. CLASS: RBL	END SILL: 6"X4"X7/16" ANGLE	A.A.R. CODE: F7A-02AN-UA DRESSER
CAPY: 4873 CU.FT.	FLOORING: 2" DOWELOC (ACROSS CAR)	PATT. NO. TF-7162 A.A.R. IDENT. NO. 738
AVE. T.T. WT. 82,000 LBS.	GENERAL DWG: FGE 24-D-89	(20141-20199)
AVE. LD. LIMIT: 138,000 LBS.	HANDBRAKE: 20100-20199-MAX 14665	A.A.R. CODE: F7S-04BN-UA BUCKEYE
-BODY-	20200-20272-UNIVERSAL 7400	PATT. NO. F-7153 A.A.R. IDENT. NO.
AIR BRAKE MFG:	INSULATION: FOAM IN PLACE 2LB POLYURETHANE	SPRINGS: AAR D-5
AIR BRAKE SCHEDULE: ABD VALVE 10X12 CYLINDER	LINING: SIDE 2 3/32" T&G, END 1/4" T&G	(20100-20140 & 20200-20272) 14 O.C. & 12 I.C. / TRUCK
BODY CENTER PLATE:	ROOF: STANRAY 3A-21656-	(20141-20199) 14 O.C. & 10 I.C. / TRUCK
BODY SIDE BEARINGS:	SIDE FILLERS: EQUIPCO 251-H-1911B (INOPERATIVE)	TYPE OF TRUCK: (20100-20140 & 20200-20272)
CENTER SILL SLIDING: 2, 2-26 @ 41 2/4" FT. TRI-TEN	SIDE SILL: 6"X4"X1/2" ASTN A-36	A.S.F. A-3 RIDE CONTROL (20141-20199)
STATIONARY: 13" @ 31/8 #/FT.	SIDE SILL REINFORCEMENT: 1" X 2 1/2" 250 LB. CHANNEL	BARBER 5-2-C
CENTER SILL AREA SLIDING: 28.28 SQ. IN.	SIDE PLATE: 1/4" PLATE-YOUNGSTOWN S-4250B	WHEELS: 1 WEAR CAST STEEL CU-33
STATIONARY: 18.60 SQ. IN.	SHEATHING: .10" RIVETED STEEL	CARS: 20100-20272
COMPARTMENTIZER: EQUIPCO 221-X-19264	-TRUCK-	D.T. & I.
COUPLER: EBOCHT	BOLSTER: (20100-20140 AND 20200-20272)	MECHANICAL ENG. DEPT. 1-24-79
COUPLER RELEASE RIGGING: STANRAY 4U-16793	A.A.R. CODE: 67A-06DN-BN DRESSER	-REVISION-
CROSS-OVER STEP: MORTON 3-619	PATT. NO. 80-7443 A.A.R. IDENT. NO. 2145	
CUSHIONING DEVICE: KEYSTONE 20" TRAVEL	(20141-20199)	
70-DA-20	A.A.R. CODE: 47S-08DN-BN BUCKEYE	
DOOR: YOUNGSTOWN STEEL DOOR CO. DWG. # 69-39297-B	PATT. NO. A.A.R. IDENT. NO.	
DOOR GASKET: YOUNGSTOWN H-42411	BRAKE BEAM: NO. 18 UNIT	

— 68 TON INSULATED BOX —



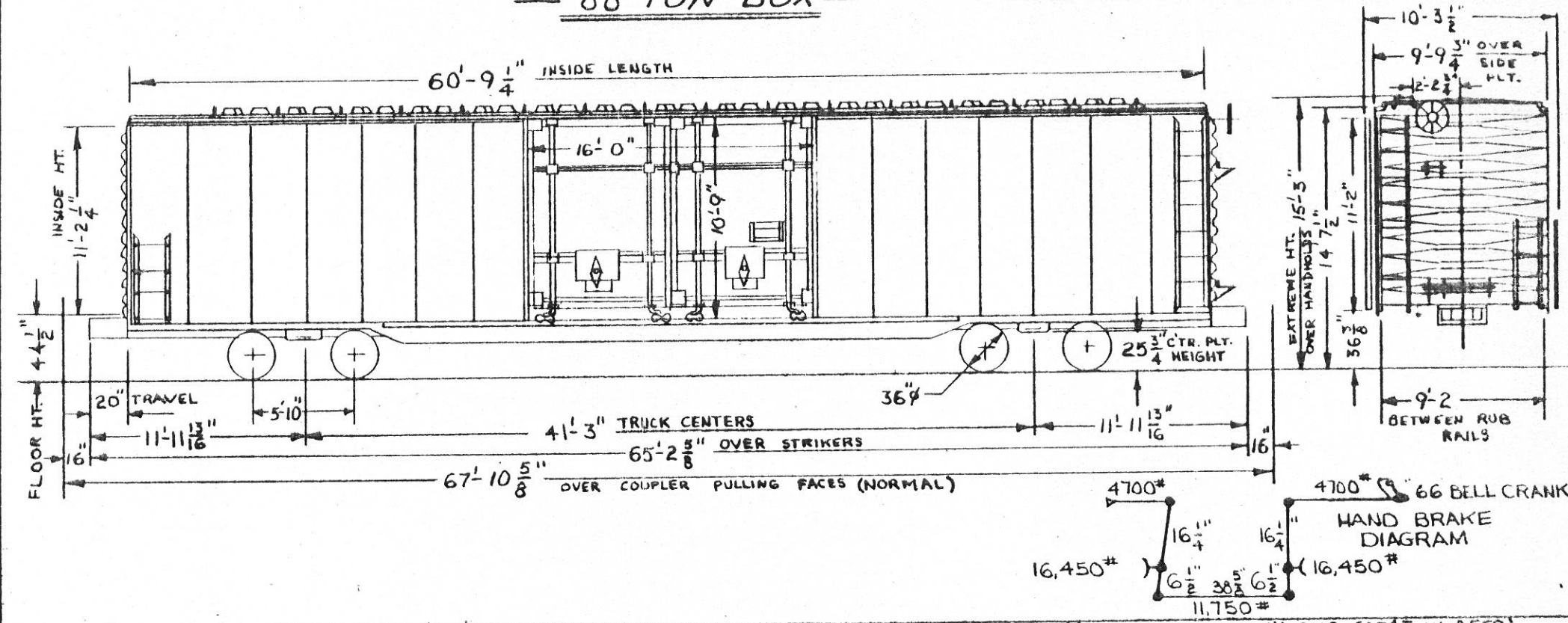
BRAKE DIAGRAM

LESSOR FRUIT GROWERS EXPRESS LEASE: 4680 TERM:

<p style="text-align: center;">— GENERAL —</p> <p>BUILDER: FRUIT GROWERS EXPRESS CO. YEAR BUILT: 1965 BUILDER'S REF: S-249-A A.A.R. CLASS: RBL CAPY: 4577 CU. FT. AVE. LT. WT: 33,000 LBS AVE. LD. LIMIT: 137,000 LBS</p> <p style="text-align: center;">— BODY —</p> <p>AIR BRAKE MFG: WESTINGHOUSE AIR BRAKE AIR BRAKE SCHEDULE: AB VALVE 10"x12" CYLINDER BODY CENTER PLATE: 13 3/4" CAST STEEL 1" END WAUSH CG-3987, "B" END WAUGH CG-3986 BODY SIDE BEARINGS: CENTER SILL: SLIDING: 2,412#/FT ROLLED ZEE STATIONARY: 13" @ 31.8#/FT CHANNEL CENTER SILL AREA: SLIDING: 24.24 SQ. IN. STATIONARY: 18.60 SQ. IN. COMPARTMENTIZER: EVANS DEB, DB-20012B COUPLER: FEOCHT COUPLER RELEASE RIGGING: STANRAY 4U-16793-C CROSS OVER STEP: MORTON 185-6-D CUSHIONING DEVICE: HYDRA-CUSHION-20" TRAVEL CG-3546 - TYPE II</p>	<p>DOOR: YOUNGSTOWN 64-26809-C DOOR GASKET: YOUNGSTOWN DWG. 63-10590 DRAFT GEAR: WAUGHMAT WM-CG-5 DRAFT GEAR ATTACHMENT: DRAFT KEY ENDS: STANRAY SE-18880, TOP: 3/16" CBS. BOTTOM: 1/4" CBS. END SILLS: 6" X 4" X 7/16" ANGLE FLOORING: 2" DOWELOC (ACROSS CAR) GENERAL DWG: FGE 21-D-64 HANDBRAKE: AXAX 14665 INSULATION: FLOOR 3" PREFORMED POLYURETHANE BLCK REMAINDER: 4" THICK FIBERGLASS 3/4#/CU. FT. LINING: SIDE 25/32" T&G END: 1/4" T&G ROOF: STANRAY 7R-15563-H SIDE FILLERS: EVANS SF-201035 (INOPERATIVE) SIDE SILL: 6" X 4" X 1/2" ANGLE SIDE SILL REINFORCEMENT: 12" @ 25.0#/FT CHANNEL SIDE PLATE: 1/4" STANRAY 7H-18917 SHEATHING: .10" CBS RIVETED</p> <p style="text-align: center;">— TRUCK —</p> <p>BOLSTER: AAR CODE 875-05ES-BH DRESSER PATT NO. 80-7366 AAR IDENT NO. 1826 BRAKE BEAM: NO 18 UNIT GENERAL DWG: SCT 3741-D</p>	<p>JOURNALS: 6"x11" ROLLER BEARINGS JOURNAL BEARINGS: HYATT 6 SIDE BEARING: STUCKI 656-C SIDE FRAME: AAR CODE F75-048N-UA DRESSER PATT NO. 7F-7178-C AAR IDENT NO. 843 SPRINGS: AAR D-5 14 OUTER COILS AND 10 INNER COILS PER TRUCK TYPE OF TRUCK: BARBER S-2-C STABILIZED EQUIPPED FOR UNIT BRAKE BEAM NARROW PEDESTAL ROLLER BEARING</p> <p>WHEELS: 1 WEAR WROT STEEL J-33</p> <p style="text-align: center; font-size: 1.2em;">CARS: 20213-20279</p> <p style="text-align: center; font-size: 1.2em;">D.T.&I.</p> <p style="text-align: center;">MECHANICAL ENG. DEPT. 1-25-79</p> <p style="text-align: center;">— REVISION —</p>
---	--	--

88 TON BOX

EXTREME WIDTH OVER SIDE LADDERS AND DOOR FIXTURES

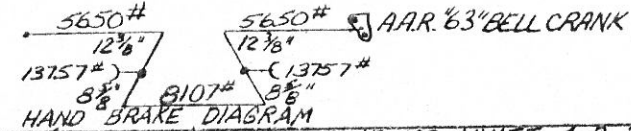
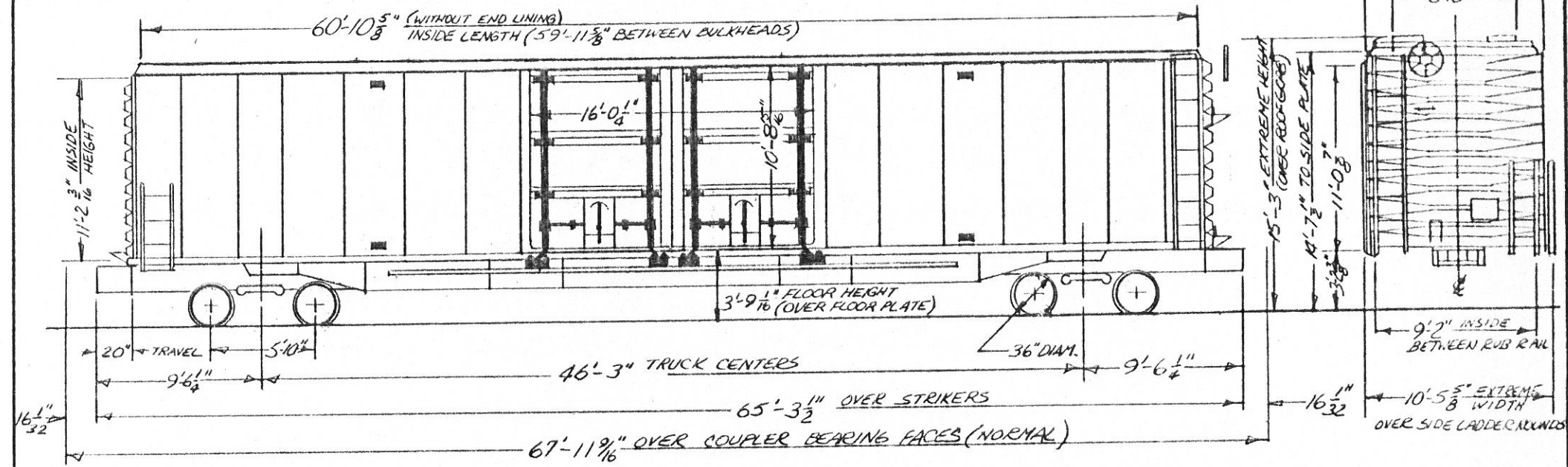


— GENERAL —	
BUILDER: GREENVILLE STEEL CAR CO.	
YEAR BUILT: 1963	
BUILDERS REF: O.O. 817	
A.A.R. CLASS: XP	
NO. BUILT: 50	
CAPACITY: 6,000 CU. FT.	
AVE. LT. WT: 86,500 LBS.	
AVE. LOAD LIMIT: 176,500 LBS.	
— BODY —	
AIR BRAKE MFG: SECOND HAND	
AIR BRAKE SCHEDULE: AB VALVE, NY COPAC B3-8 1/2 UNITS - NO. N-8982	
BODY CENTER PLATE: 13 1/2" CAST STEEL (DWG. W-9463)	
BODY SIDE BEARING: HARDENED STEEL	
CENTER SILL: SLIDING - 2-2-26 @ 41.2 #/FT.	
STATIONARY - 13" @ 31.8 #/FT. CHANNEL	
CENTER SILL AREA: SLIDING - 24.24 SQ. IN.	
STATIONARY - 18.60 SQ. IN.	
COUPLER: B-EGG-HT3, WITH VERTICAL ANGLE COCK BRACKET LUGS.	
COUPLER RELEASE RIGGING: STANRAY 4U-17770-G (DT&I DWG. V-6739)	
CROSS-OVER STEP: APEX 3950 (DT&I DWG. X-6593)	
CUSHIONING DEVICE: KEYSTONE 20" TRAVEL	

CYLINDER RELEASE VALVE: WESTINGHOUSE QRB	
DOORS AND FIXTURES: YOUNGSTOWN DOUBLE PLUG 63-10852-H (DT&I DWG. V-6421) OPENS FROM INSIDE OR OUTSIDE	
DRAFT GEAR: MINER A-22-XL	
DRAFT GEAR ATTACHMENTS: C.S. YOKE B-Y45	
ENDS: STANRAY 5E-17736-B (DT&I DWG. V-6735) TOP SHEET 3/16" BOTTOM SHEET 1/4"	
END SILL: 6" X 3 1/2" X 5 1/4" ANGLE	
FLOOR: 2" POTLATCH "ELECTRO-LAM" 1/4" FLOOR PLATE	
GENERAL DWG: GSC 20396 (DT&I V-6489)	
HAND BRAKE: AJAX 14665 (REWORKED TO 1966)	
LINING: END: SIDE: RUBRAILS 3/8" X 12" FLAT BAR	
ROOF: STANRAY 7R-17718-C (DT&I DWG. V-6733)	
SIDE PLATE: 6" ZEE @ 15.7 #/FT. O.H.S.	
SIDE SILL: 3" ZEE @ 6.7 #/FT	
SIDE SILL REINFORCEMENT:	
— TRUCK —	
BOLSTER: A.A.R. CODE-NONE SCULLIN PAT. NO. 8264-A (DT&I DWG. W-9549) AAR IDENT. NO. 2072	
BOLSTER CENTER PLATE WEAR PLATES: HORIZ. DWG. Y-9499 VERTICAL DWG. Y-9450	
BRAKE BEAM: N.Y.A.B #N-8977 (INCL. PISTON)	
BRAKE SHOES: R.F.P. V-141	

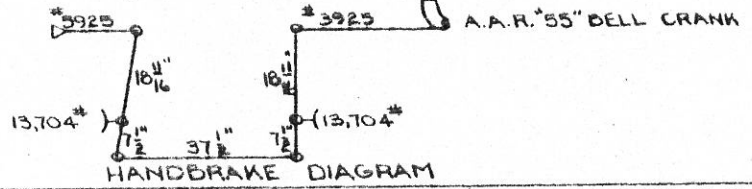
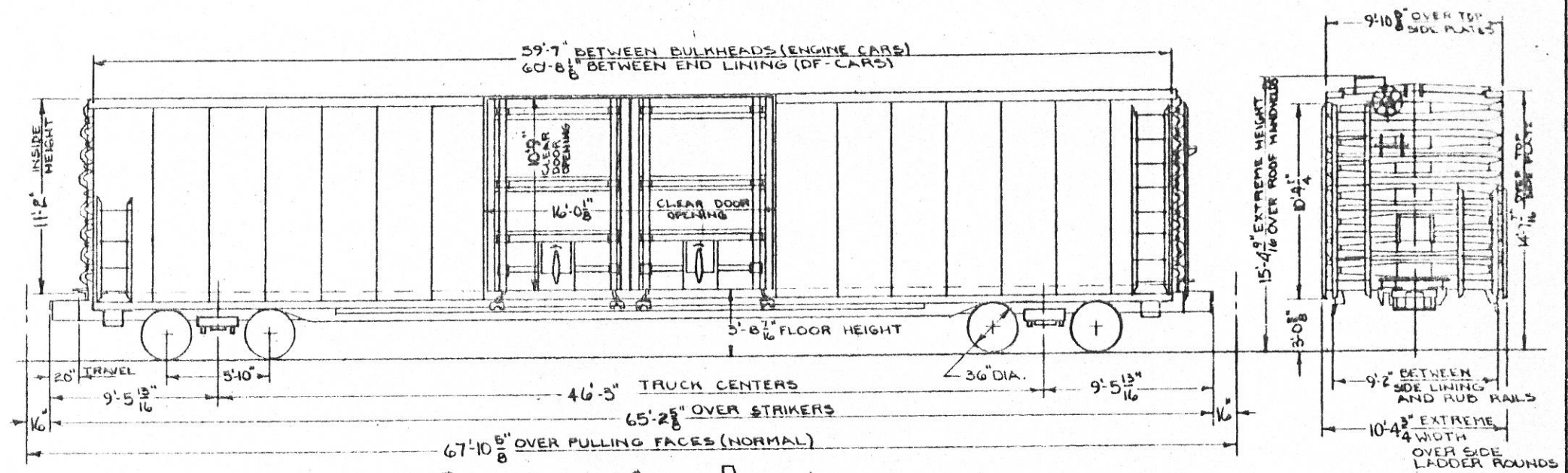
GENERAL DWG: SCULLIN 8308-(DT&I W-9550)
JOURNALS: 6 1/2" X 12" ROLLER BEARINGS
JOURNAL BEARING: TIMKEN 6 1/2" X 12" 1-A
SIDE BEARINGS: STUCKI 688-B (DT&I DWG. E-5817)
SIDE FRAME: AAR CODE-F9C-05BN-1A SCULLIN PAT. NO. 7979-A (DT&I DWG. V-9551) AAR IDENT. NO. 5010 NARROW PEDESTAL
SPRINGS: A.A.R. D-5, 14 OUTER, 12 INNER COILS PER TRUCK DOUBLE BARBER SIDE SPRINGS (DWG. X-9426)
TYPE OF TRUCK: 6 1/2" X 12" BARBER S-2-C STABILIZED NARROW PEDESTAL ROLLER BEARING
WHEELS: 36" TWO WEAR WROUGHT STEEL J-36
CARS: 25000-25049
D.T. & I.
MECHANICAL ENGINEERING DEPT. 1-29-70
— REVISIONS —

— 90 TON BOX —



- GENERAL -		DOORS & FIXTURES: YOUNG STOWN DOUBLE PLUG (DT&I DWG V-209)	JOURNAL BEARINGS: HYATT 4-R-3796	
BUILDER: AMERICAN CAR & FOUNDRY (ST. LOUIS)		(DOORS OPEN FROM INSIDE OR OUTSIDE)	SIDE BEARINGS: STUCKI 688-BR-RESILIENT	
YEAR BUILT: 1964		DRAFT GEAR: MINER RF-333 (HIGH CAPACITY)	SIDE FRAME: A.A.R. CODE F-95-018N-1A	
BUILDER'S REF: 71-06311		DRAFT GEAR ATTACHMENT: GRADE "B" C.S. YOKE (B-Y45)	: A.S.F. PATTERN NO. 22052-A	
A.A.R. CLASS: XP		ENDS: STD. RY. EQUIP. CO. TOP SHEET 3/16" BOTTOM SHEET 1/4"	: DT&I DWG N-69911449 IDENT. NO. 320	
NO. BUILT: 80		END SILL: 6" X 3 1/2" X 3/8" ANGLE	: NARROW PEDESTAL JAW	
CAPACITY: 6000 CU. FT.		FLOOR: 2 1/8" DOWELOC (1/4" STL. PLT THRU DOORWAY)	SPRINGS: 3 1/8" A.A.R. D-5 14 OUTER & 14 INNER	
AVE. T.W.T.: 79,000 LBS. (WITHOUT RACKS)		GENERAL DRAWING: A.C.F. 61-75196 (DT&I V-7124)	COILS PER TRUCK	
AVE. LOAD LIMIT: 184,000 LBS.		HAND BRAKE: MINER D-3290-XL (CY 1 TRUCK ONLY)	TRUCK TYPE: 100 TON BARBER S2C	
- BODY -		LINING: END: NONE	STABILIZED EQUIPPED FOR ROLLER BEARINGS AND TRUCK MOUNTED BRAKES	
AIR BRAKE MFG. SECOND HAND		SIDE: 5 RUB RAILS 1 1/2" X 3" FORMED CHANNEL	WHEELS: 36" 2 WEAR WROUGHT STEEL J-36	
AIR BRAKE SCHEDULE: STD. ABD VALVE WABCO PAC B-3		ROOF: STD. RY. EQUIP. CO. 7R-18138-D		
8 1/2" UNITS.		SIDE SILL: 6" X 6" X 3/8" ANGLE		
BODY CENTER PLATE: 13 3/8" DROP FORGED KROPP FORGE DE		SIDE BEARING CENTERS: 4'-2"		
6066		SIDE PLATE: 6" ZEE @ 15.7#/FT.		
BODY SIDE BEARING: STUCKI 799 LINE 2		SIDE SHEATHING: 0.10" COPPER BEARING STEEL - WELDED		
CENTER SILL: SLIDING: 2 LAHT 4 1/2 4/ET. ROLLED ZEE		- TRUCK -		
SECT.; STATIONARY 3/16" PRESSED PLATE		BOLSTER: A.A.R. CODE: B2S-10HN-BY	CARS: 25100-25179	
CENTER SILL AREA: SLIDING: 24.24 SQ. IN.		: DT&I DWG N-12773 A.A.R. IDENT. NO. B-1921	D.T. & I. RAILROAD	
STATIONARY: 12.78 SQ. IN.		: B.S.C. PATT. NO. B-10241	MOTIVE POWER DEPT. 9-1-64	
COUPLER: E63AHT		(DROP IN HORIZONTAL LINER)	- REVISIONS -	
COUPLER RELEASE RIGGING: STD. RY. EQUIP. CO. (DT&I DWG. V-7853)		BRAKE BEAM: W.A.B. UNIT #566217 (INCLUDING PISTON)	6/	
CROSSOVER STEPS: U.S. GYPSUM "WELD FORGED" 82146-P		BRAKE SHOES: 1 1/2" HIGH FRICTION COMPOSITION	7B	
CUSHIONING DEVICE: ACF FREIGHT SAVER		GENERAL DWG: A.S.F. 37420-DT&I DWG X-6279		
20" TRAVEL		JOURNALS: 6 1/2" X 12" ROLLER BEARINGS		

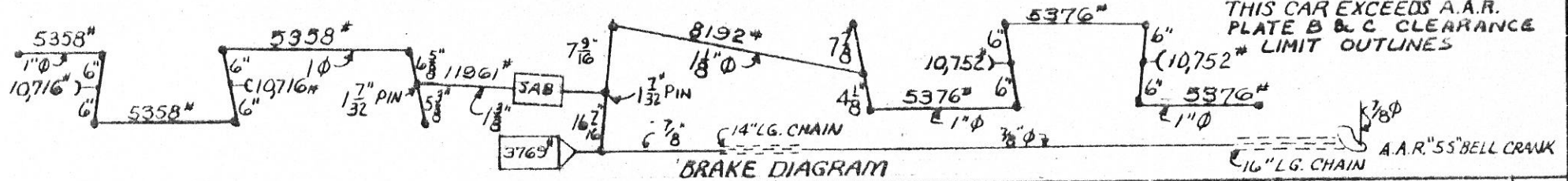
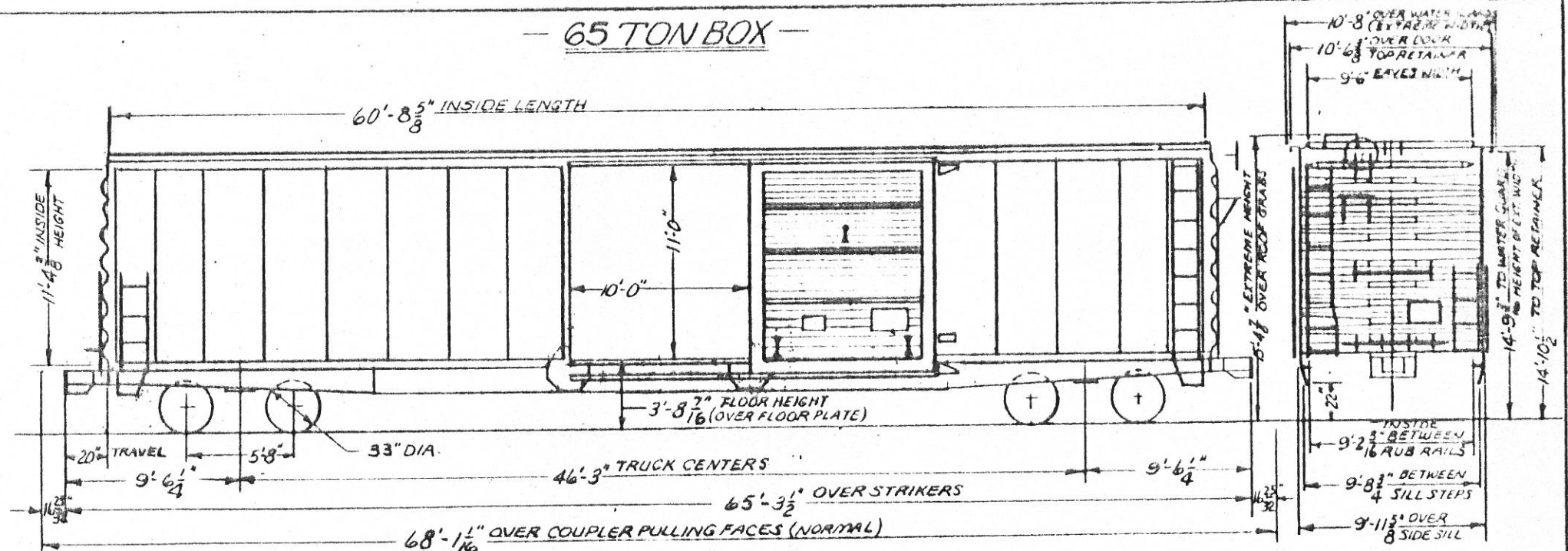
- 83 TON BOX -



CARS 25200-25297 EQUIPPED WITH RUB RAILS AND END BULKHEADS FOR RACK LOADING.
 CARS 25258-25314 EQUIPPED WITH COMPARTMENTIZERS AND DF-2 BELT RAILS FOR AUTO PARTS LOADING.

— GENERAL —	DOOR AND FIXTURES: YOUNGSTOWN DOUBLE PLUG STEEL DOORS (OPEN FROM INSIDE OR OUTSIDE) DT&I DWG. V-8274	GENERAL DWG.: A.S.F. 57597-A (DT&I DWG. X-6979)
BUILDER: GREENVILLE STEEL CAR CO.	DRAFT GEAR: MINER RF-333 (HIGH CAPACITY)	JOURNALS: 6 1/2" x 12" ROLLER BEARINGS
YEAR BUILT: 1965 & 1966	DRAFT GEAR ATTACHMENTS: GRADE "B" C.S. YOKE (B-Y45)	JOURNAL BEARINGS: BRENCO INC. 2583 - 65 1/2
BUILDERS REF: 886	ENDS: STD. RWY. EQUIP. CO. - TOP SHEET 3/16", BOTTOM SHEET 1/4"	TIMKEN E-22237-Q - 50 1/2
A.A.R. CLASS: XP	END SILL: 6" x 3 1/2" x 5/16" ANGLE @ 9.8°/FT.	SIDE BEARINGS: STUCKI DOUBLE ROLLER #688-B (DT&I DWG. Z-5817)
NO. BUILT: 115	FLOOR: 2" DOWELDC. T&G WITH 3/16" PLT. IN DOORWAY.	SIDE FRAME: A.S.F. PATT. NO. 22052-A
CAPACITY: 6000 CU. FT.	2" DOWELDC. 3/4" WEAR PLTS. OR 2 7/16" DOWELDC. NO WEAR PLTS.	NARROW PEDESTAL JAW
AVE. LT. WT.: 25200-25257 86,000 LBS.	GENERAL DWG. G.S.C. 31380 - (DT&I DWG. V-8279)	A.A.R. CODE F95-01B-VA
25258-25314 95,400 LBS.	HANDBRAKE: AJAX CONSOLIDATED (DT&I DWG. W-8293)	A.A.R. IDEN. NO. 6920 (DT&I DWG. W-812)
AVE. LOAD LIMIT: 177,000 LBS	LINING: END 1 1/16" T&G (25258-25314)	SPRINGS: 3 1/16" A.A.R. "D5" 14 OUTER AND 14 INNER COILS PER TRUCK
	SIDE 1 1/16" T&G (25258-25314)	TYPE OF TRUCK: 6 1/2" x 12" BARBER S-2-C
— BODY —	ROOF: STD. RWY. EQUIP. CO. 7R-196B4 - 6 (DT&I DWG. V-8275)	STABILIZED, EQUIPPED FOR ROLLER BRGS. AND TRUCK MTD. PRWS
AIR BRAKE MFG.: WESTINGHOUSE	SIDE SILL: 3" Z @ 6.7°/FT.	WHEELS: 36" 2 WEAR WROT STEEL, J-36 RAISED WHEEL SEAT
AIR BRAKE SCHEDULE: ADD WABCO PAC 83 8 1/2" UNITS	SIDE BEARING CENTERS: 4'-2"	CARS: 25200 - 25314
BODY CENTER PLATE: 13 3/4" CAST STL. (DWG. W-12741)	SIDE PLATE: 6" Z @ 15.7°/FT.	D.T.&I.
BODY SIDE BEARING: DROP FORCED WEDGE SECT.	SIDE SHEATHING: 010" C.B.S. - RIVETED.	MECHANICAL ENGINEERING DEPT. 12-30-65
CENTER SILL: SLIDING - 2 Z-26 @ 41.2°/FT. SECTIONS	— TRUCK —	— REVISIONS —
STATIONARY - 2 Z-26 @ 31.3°/FT. SECTIONS	BOLSTER: NATIONAL CASTINGS PATT. #40936-59 (DT&I DWG. V-8201) A.A.R. IDEN. NO. B-1910	
CENTER SILL AREA: SLIDING - 24.24 SQ. IN.	A.A.R. CODE: B95-03EJ-BX	
STATIONARY - 18.40 SQ. IN.	COUPLER: EGBAITS - BOTT OPERATED	
COMPARTMENTIZER: EQUIPCO. 57 CARS ONLY (DT&I DWG. V-8541)	COUPLER RELEASE RIG: STANRAY: 4U-17770 (V-6739)	
COUPLER: EGBAITS - BOTT OPERATED	CROSSOVER STEP: US GYPSUM CO. (DT&I DWG. V-8271)	
COUPLER RELEASE RIG: STANRAY: 4U-17770 (V-6739)	CUSHIONING DEVICE: "KEYSTONE" 20" TRAVEL	
CROSSOVER STEP: US GYPSUM CO. (DT&I DWG. V-8271)		
CUSHIONING DEVICE: "KEYSTONE" 20" TRAVEL		

65 TON BOX



- GENERAL -

BUILDER: PULLMAN STANDARD
 YEAR BUILT: 1965
 BUILDER'S REF: 8981
 A.A.R. CLASS: XAP
 NO. BUILT: 45
 CAPACITY: 6361 CU.FT.
 AVE. LT. WT. 89,400 LBS.
 AVE. LOAD LIMIT: 131,600

- BODY -

AIR BRAKE MFG. WESTINGHOUSE AIR BRAKE
 AIR BRAKE SCHEDULE ASD-1012 WITH ASD-1 VALVE
 BODY CENTER PLATE: 13 3/4" PULLMAN PATT. NO. 5209
 BODY SIDE BEARING: CARNEGIE-ILL. SECTION M-4198
 CENTER SILL: SLIDING, 2 TRI-TEN Z 26 @ 41.2" SECTION
 STATIONARY, 2 Z-26 @ 31.3" SECTIONS
 CENTER SILL AREA: SLIDING: 24.24 SQ. IN.
 STATIONARY: 18.40 SQ. IN.
 COUPLER: A.A.R. B-E99428-HT-TYPE E HEAD,
 TYPE F SHANK, 43" PULLING LINE TO PIN
 COUPLER RELEASE RIGGING: PULLMAN STD. (DWG. V-7818)
 CROSSOVER STEPS: APEX 4148
 CUSHIONING DEVICE: PULLMAN HYDROFRAME "40"
 20" TRAVEL

DOOR AND FIXTURES: YOUNGSTOWN FR-63 STEEL (DT&I DWG. V-7860)
 DRAFT GEAR: MINER RF-333 (HIGH CAPACITY)
 DRAFT GEAR ATTACHMENT: GRADE 8 CS. YOKE (B-Y45)
 ENDS: PULLMAN STD. TOP SHEET 1/2", BOTTOM SHEET .1793"
 END SILL: 6" X 3 1/2" X 5/16" ANGLE
 FLOOR: 1/8" PULLMAN STD. FLOOR PROTECTION PLATE
 (OVER 2 3/8" T & G FLOOR)
 GENERAL DRAWING: P.S.C. 600-E 68 (DT&I DWG. V-7844)
 HAND BRAKE: KLASING HAND BRAKE CO. NO. 1150
 LINING: END: 1" EXTERIOR GRADE "AC" FIR PLYWOOD
 SIDE: 9 STD. 2" X 4" WOOD RUB RAILS & 13 BELT RAILS
 ROOF: PULLMAN STD. CAR

SIDE SILL: 6" X 6" X 5/16" ANGLE (TRI-TEN STEEL)
 SIDE BEARING CENTERS: 4'-2"
 SIDE PLATE: Z-28 @ 8.3" SECTION
 SIDE SHEATHING: 0.10" C.B.S. END & INTERMEDIATE SHEETS
 1/16" PLT. @ DOOR POST

- TRUCK -

BOLSTER: A.S.F. PATT. 21704-EG
 (D.T.&I. DWG. W-7950) AAR IDENT. NO. 1117
 AAR CODE: B75-Q4MN-0N
 BRAKE BEAM: #18 UNIT TYPE

GENERAL DWG: ASF 57598 - (DT&I DWG. V-7860)
 JOURNALS: 6" X 11" WITH FLAT BACK BEARINGS
 SIDE BEARINGS: STUCKI 656-C
 SIDE FRAME: A.S.F. PATTERN NO. 21990-M, WITH
 WASTE RETAINER RIBS, INTEGRAL BOX
 AAR CODE F79-0488-UA
 AAR IDENT. NO. 904, DT&I DWG. W-5959

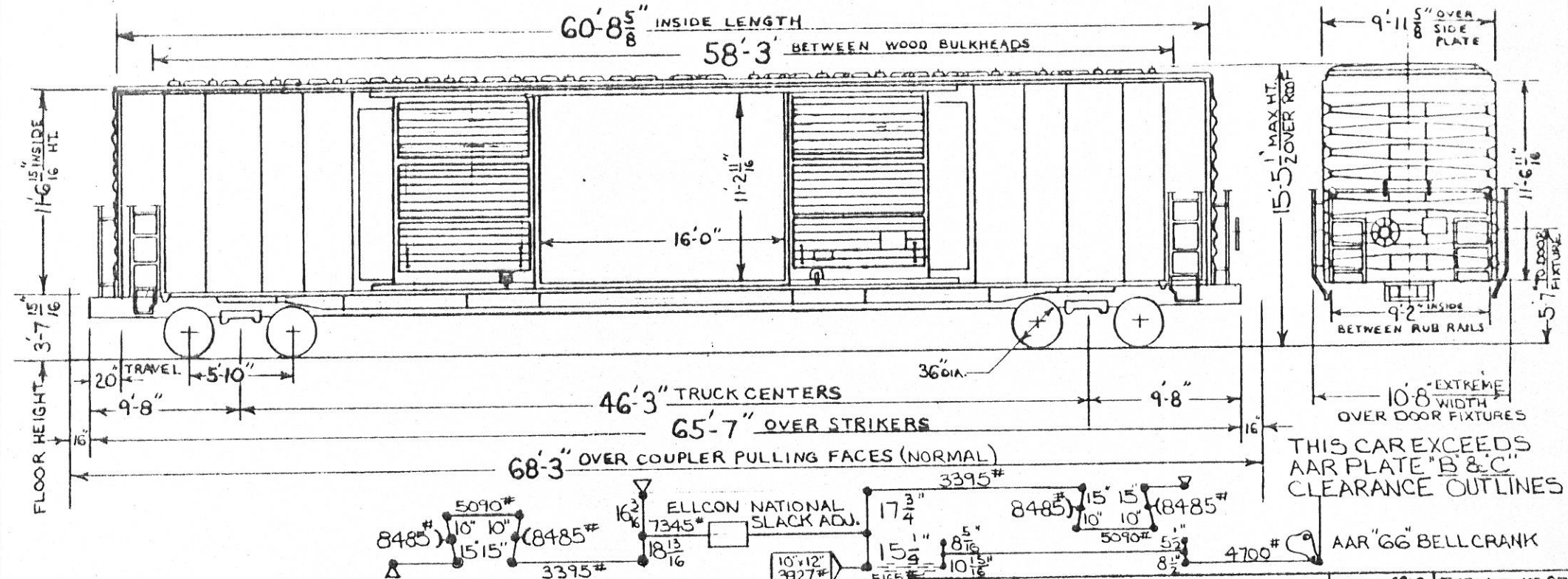
SPRINGS: 3 1/16" TRAVEL AAR D-4
 TRUCK WT.: 8400 LBS.
 TYPE OF TRUCK: 6" X 11" BARBER 3-2-B
 STABILIZED SPRING PLANKLESS
 EQUIP. FOR UNIT BRAKE BEAM
 WHEELS: 33" I WEAR CAST STEEL CJ-33
 FOR RAISED WHEEL SEAT AXLES

CARS: 25500-25544

D. T. & I.

MECHANICAL ENGINEERING DEPT. 3-18-65
 -REVISION-

90 TON BOX

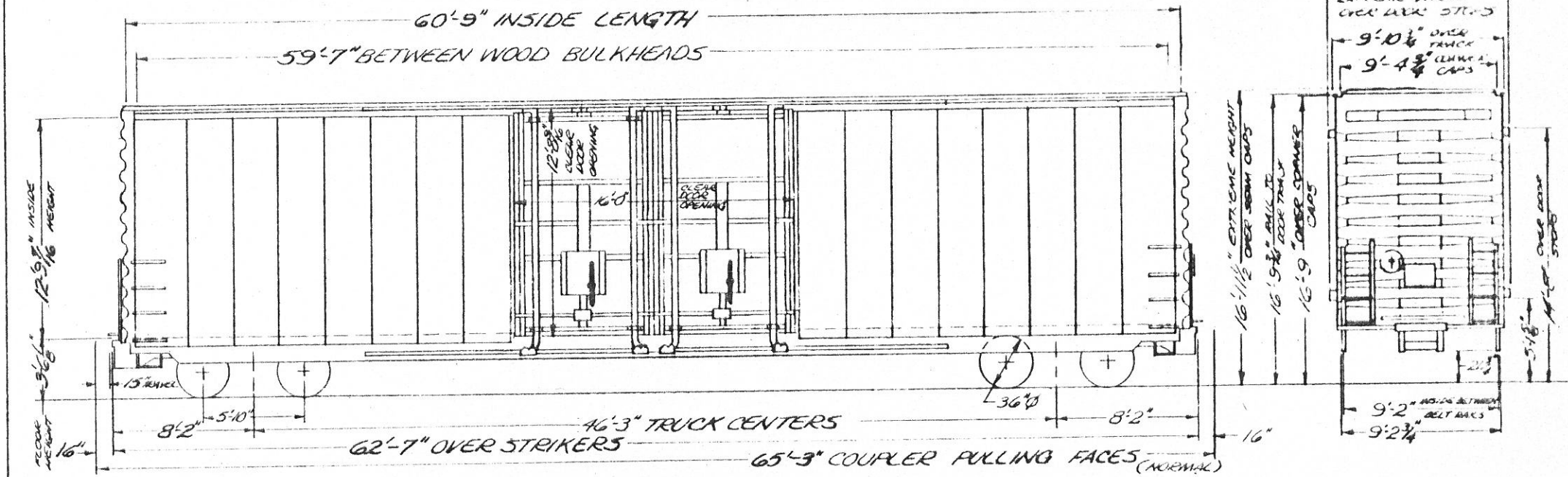


THIS CAR EXCEEDS AAR PLATE "B & C" CLEARANCE OUTLINES

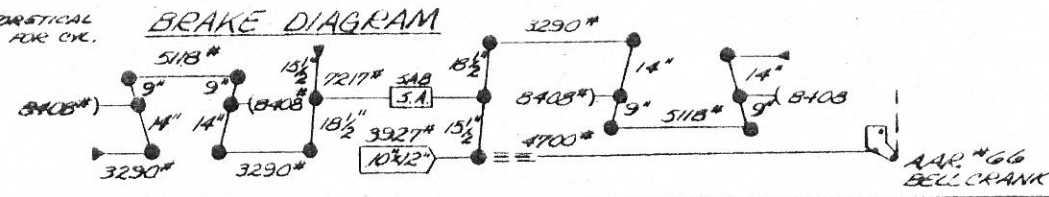
LESSOR NATIONAL EQUIPT. LEASING LEASE 4212 TERM 3-15-85

- GENERAL -		CUSHIONING DEVICE: ACF FREIGHTSAVER 20B 20" TRAVEL	BRAKE SHOES: 2" HIGH FRICTION ABEX "COMET" H4	
BUILDER: AMERICAN CAR & FOUNDRY (ST. LOUIS)		DOORS AND FIXTURES: YOUNGSTOWN - FR63	GENERAL DWG: ASF 74383-A (D.T.&I. DWG. W-9774)	
YEAR BUILT: 1970		YOUNGSTOWN DWG: 14345-H (D.T.&I. DWG. V-9602)	JOURNALS: 6 1/2" x 12" ROLLER BEARINGS	
BUILDER'S REF: 11-06579			JOURNAL BEARINGS: BRENCO - 5A	
A.A.R. CODE: XP		DRAFT GEAR: MINER A-22-XL	SIDE BEARINGS: STUCKI 680-B DOUBLE ROLLER (DWG. Z-5817)	
NO. BUILT: 12		DRAFT GEAR ATTACHMENTS: GRADE "B" CAST STEEL WORK	SIDE FRAME: A.A.R. CODE - F96-03BN-UA ASF PATT. NO. 22052-AJ (D.T.&I. DWG. W-9462)	
CAPACITY: 6180 CU. FT.		ENDS: STANRAY 5E-21441-E (LINE 3) TOP SHEET 3/16"	A.A.R. IDENT. NO.: 920 NARROW PEDESTAL	
AVL. LT. WT.: 79,000 LB.'S		BOTTOM SHEET 1/4" (D.T.&I. DWG.)	SIDE FRAME WEAR PLATES: BOLTON TYPE DWG. Z-9455	
AVE. LOAD LIMIT: 184,000 LB.'S		END SILL: 6" x 3 1/2" x 3/8" ANGLE	SPRINGS: A.A.R. D-5 & D-6; 14 OUTER AND 14 INNER D-5	
- BODY -		FLOOR: 1 3/4" NATIONAL STEEL (D.T.&I. DWG. V-9768)	SPRINGS AND 4 INNER D-6 SPRINGS PER TRUCK	
AIR BRAKE MFG: WESTINGHOUSE		GENERAL DWG.: G-C-8250 (D.T.&I. DWG. V-9819)	TYPE OF TRUCK: ASF RIDE CONTROL 6 1/2" x 12"	
AIR BRAKE SCHEDULE: A&D VALVE 10X12 CYLINDER		HAND BRAKE: ELLCON NAT'L 1600-2	STABILIZED NARROW PEDESTAL ROLLER BEARING	
WITH 2" COMPOSITION BRAKE SHOES (HIGH FRICTION)		LINING: END: NONE	WHEELS: 36" I WEAR WROT STEEL H-36	
BODY CENTER PLATE: 13 3/4" FORGED (DWG. W-9844)		SIDE: NONE		
BODY SIDE BEARING: ROLLED SECTION C-1050		ROOF: STANRAY 3R-21442-A (D.T.&I. DWG.)	CARS: 25800-25811	
CENTER SILL: SLIDING - 2 Z-26 @ 41.2" LAST 12.500"		SIDE PLATE: 3 3/8" SIDE PLATE @ 8.33 FT. ASTM A-36	D.T. & I.	
STATIONARY - 1/8" PRESSED PLATE		SIDE SILL: 6" x 6" x 3/8" ANGLE		
CENTER SILL AREA: SLIDING - 24.24 SQ. IN.		SIDE SILL REINFORCEMENT: 1/16" FABRICATED	MECHANICAL ENGINEERING DEPT.	
- TRUCK -			5-1-70	
COUPLER: B-TIGHTS, 43" PULLING FACE TO PIN		BOLSTER: A.A.R. CODE - NONE ASF PATT. NO. 22256-BX	- REVISIONS -	
		(D.T.&I. DWG. W-9775) A.A.R. IDENT. NO. 2117		
COUPLER RELEASE RIGGING: STANRAY 4U-19872-L		BOLSTER CENTER PLATE WEAR PLATE: HORIZ. DWG. Z-8612		
LINE 7 (D.T.&I. DWG.)		VERTICAL: DWG. Y-9450		
CROSSOVER STEP: APEX 4412 (D.T.&I. DWG. X-9675)		BRAKE BEAM: 7/8" UNIT (FOR COMPOSITION SHOES) DWG. X-9674		

85 TON BOX CAR



NOTE: BRAKE FORCES SHOWN ARE THEORETICAL
SHOE TEST SHOWS 89.2% EFF. FOR CYL.
100.1% EFF. FOR HANDBRAKE



THIS CAR EXCEEDS AAR
PLATE "B" AND "C" CLEARANCE
OUTLINES
THIS CAR IS EQUIPPED WITH
STANDARD BOX CAR SAFETY
APPLIANCES

-- GENERAL --		ENDS: STANRAY DE-23835-A (DT&I DWG. W-11256) TOP SHEET 3/8", INT. EXOT. 3/16" C.B.M.S.	JOURNAL BEARINGS: TIMKEN 1-A JOURNAL BEARING RETAINER: NATE CASTINGS (DT&I DWG. Y-5849)
BUILDER: GREENVILLE STEEL CAR	YEAR BUILT: 1973	END SILL: 6" x 3 1/2" x 3/8" ANGLE ASTM A-36	SIDE BEARINGS: STUCKI 689-B (DT&I DWG. Z-5817)
BUILDER'S REF: 0.0-1062	A.A.R. CLASS: XP	FLOOR: 1/2" STEEL PLT. ASTM A-441	SIDE FRAME: AAR CODE NONE AS F. PART. NO. 22256-JA (DT&I DWG. W-8769) AAR IDENT. NO. 8017 MERRILL P&O.
NO. OF AXLES: 36	CAPACITY: 7100 CU. FT.	GENERAL DWG. GSC 36142-B (DT&I DWG. V-11289)	SLIDING DEVICE: BARBER CENTER PLATE EXTENSION PARTS S.C.T. 4529-A (DT&I DWG. X-1157)
AVE. CT. WT: 93,000 LBS.	AIR BRAKE MFG.: NEW YORK AIR BRAKE	HANDBRAKE: AJAX 41665-1	SPRINGS: 3 1/2" TRAVEL 14 OUTER & 12 INNER COILS PER TRUCK A.A.R. D-5
AIR LOAD LIMIT: 170,000 LBS.	AIR BRAKE SCHEDULE: ABD 1042 CYLINDER A-1	ROOF: STANRAY DE-23841-A (DT&I DWG. W-11257)	SIDE SPRINGS: DT&I DWG. X-5426
-- BODY --		SIDE SILL: 3 1/2" x 3 1/2" x 3/8" ANGLE ASTM A-36	TYPE OF TRUCK: BARBER S-2-C, 6 1/2" x 12" STABILIZED
REDUCTION VALVE WITH 2" HIGH FRICTION COMPOSITION VALVES	REDUCTION VALVE WITH 2" HIGH FRICTION COMPOSITION VALVES	SIDE SILL REINFORCEMENT: 15" x 33.9" FT. CHANNEL ASTM A-36	NARROW PEDESTAL ROLLER BEARING EQUIPPED FOR BARBER C.P.E.P.
AXIS CENTER PLATE: 13 1/2" DRESSER PART. 85-340-AFH	AXIS CENTER PLATE: 13 1/2" DRESSER PART. 85-340-AFH	SLACK ADJUSTER: 348 TYPE DEV 2-USA-QJ (DWG. V-10172)	WEIGHT OF TRUCK: 10,650 LBS.
AXIS SIDE BRACING: 3/8" x 4" PLT. PITS. R.R. D-21899-A	AXIS SIDE BRACING: 3/8" x 4" PLT. PITS. R.R. D-21899-A	-- TRUCKS --	
CENTER SILL AREA: 24.24 SQ. IN.	CENTER SILL AREA: 24.24 SQ. IN.	BOLSTER: AAR CODE NONE AS F. PART. NO. 22256-JA (DT&I DWG. NO. W-11508) AAR IDENT. NO. 2142	WHEELS: 36" 2 WEAR WROT STEEL J-36
COUPLER: SOLID BUTT, 7" SAWA, 2" HEAD, 31" HEAD TO AIN AS F. PART. 3592C-NI GRADE C STEEL	COUPLER: SOLID BUTT, 7" SAWA, 2" HEAD, 31" HEAD TO AIN AS F. PART. 3592C-NI GRADE C STEEL	ROLLER BEARING: EQUIP FOR C.P.E.P.	CARS: 25900-25935
UNLATCH RELEASE RIGGING: HUXLAND "UNIVERSAL"	UNLATCH RELEASE RIGGING: HUXLAND "UNIVERSAL"	BOLSTER CENTER PLATE: HORIZONTAL WEAR PLATE - (DT&I Z-9692) VERTICAL WEAR PLATE - (DT&I Y-10326)	
D. T. & I.		BRAKE BEAM: 4" UNIT FOR COMPOSITION SHOES 5 BUFFALO 85-252-F (DT&I DWG. X-10989)	MECHANICAL ENGINEERING DEPT. 1-11-74
D. T. & I.		BRAKE SHOES: 2" HIGH FRICTION COMP. (R.F.P. V-174)	
D. T. & I.		GEN. DWG. A.S.F. 18-7103-A (DT&I DWG. JOURNAL: 6 1/2" x 12" ROLLER BEARINGS	-- REVISIONS --

