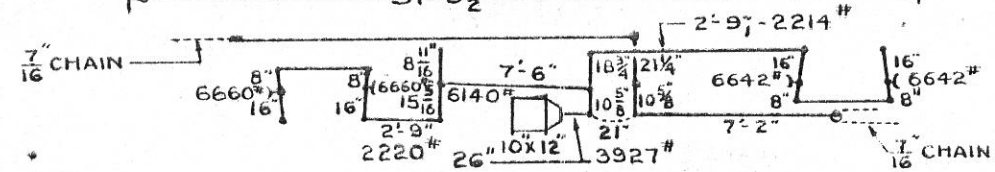
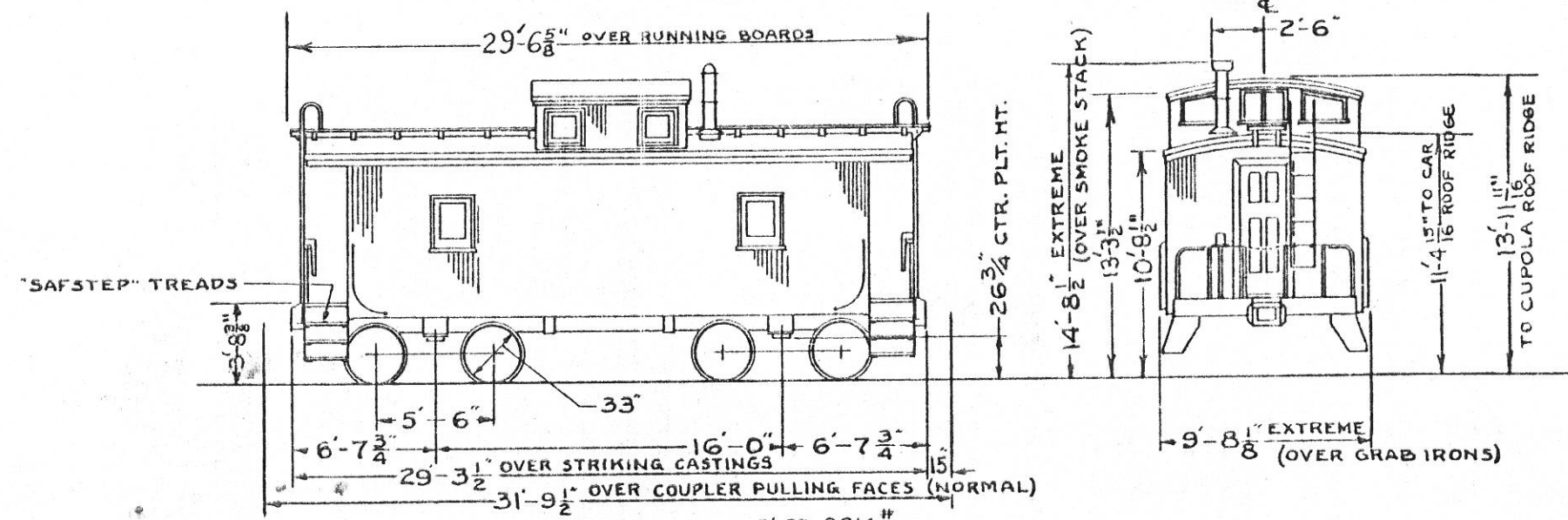


CABOOSE



BRAKE DIAGRAM

GENERAL
 BUILDER:- STANDARD STEEL CAR CO.
 YEAR BUILT:- 1925.
 BUILDER'S REF:- O.O. 4310
 R. R. SPEC. NO.- NONE.
 NO. BUILT:- 40
 AVERAGE LT. WT.- 41,300 LBS.

BODY
 AIR BRAKE MFG.- N.Y.A.B. CO.
 " " SCHEDULE:- AB
 BODY CTR. PLT.- 11 3/4" FORGED STEEL.
 " " SIDE BRG.- O.H. STEEL.
 CENTER SILL:- BUILT-UP.
 " " COVER PLT.- 1/4" x 21"
 " " AREA:- 31.38 SQ. IN.
 COUPLER:- "D" 6"x8" SLOTTED. TOP OP.
 " " RELEASE RIG:- "CARMER"
 DRAFT GEAR:- "MINER" H-2 (SPRING)
 " " ATTACHMENT:- "FARLOW" Z-KEY.
 END SILL:- 15.3 LBS. 10" L
 FLOORING:- DOUBLE. 1 3/4" & 1 3/16" T & G.
 GENERAL DRAWING:- 49822, DT&I DWG. V-1514

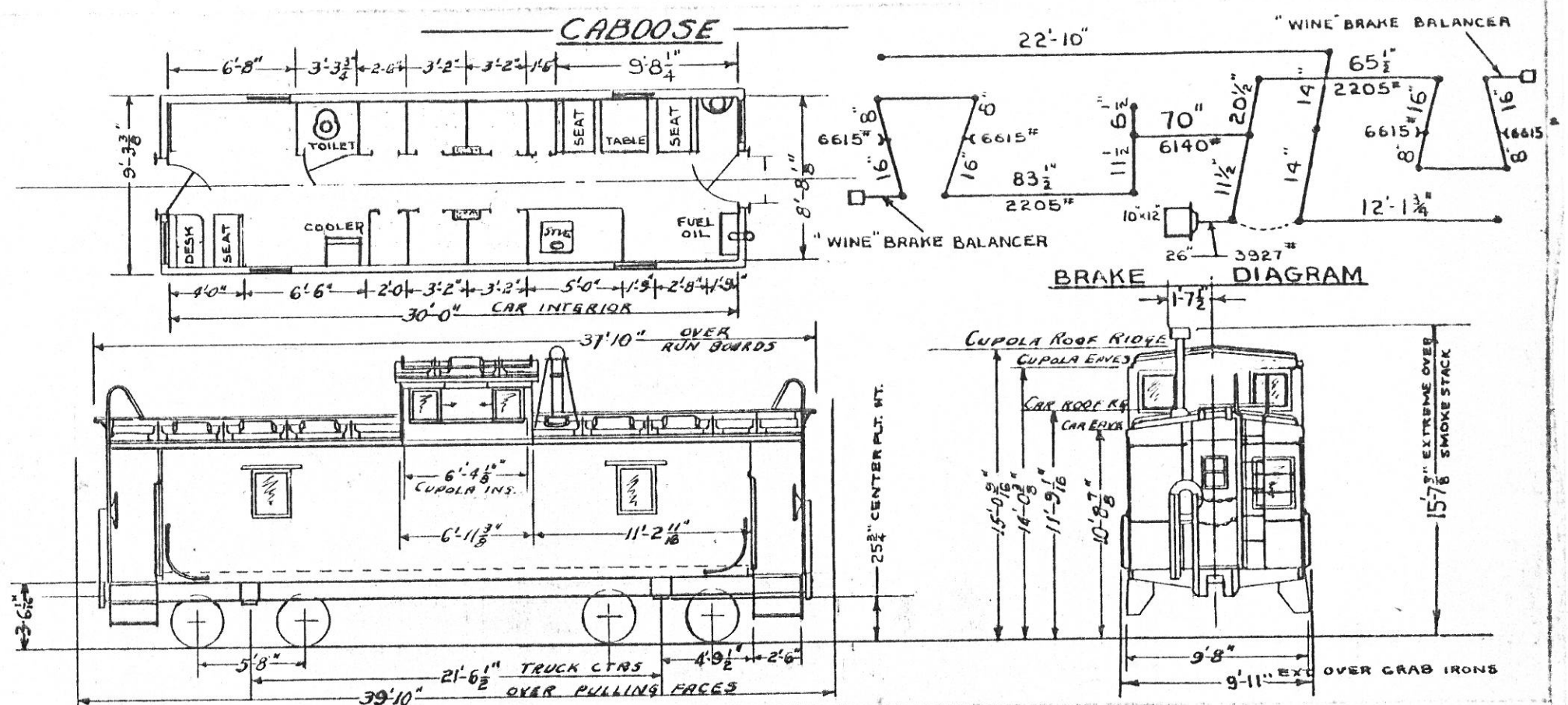
HAND BRAKE:- "MINER IDEAL" STAFF.
 LINING:- 13/16" T & G.
 ROOF:- 13/16" T & G.
 SIDE SILL:- 11.6 LBS. 5" Z.
 " " BRG. CENTERS:- 4'-2"
 SHEATHING:- 13/16" T & G.
 STOVE:- THE ESTATE STOVE CO'S NO. 149.
 SUPERSTRUCTURE:- STEEL.
 UNDERFRAME:- STEEL.
 WASHSTAND:- ADAMS & WESTLAKE NO. 251 FOLDING.

TRUCK
 BOLSTER:- A.S.F. PATT. NO. 7509.
 BRAKE BEAM:-
 " " SAFETY:- 2 1/2" x 2 1/2" x 1/4" L
 CENTER PLATE:- INTEGRAL.
 GENERAL DRAWING:- 49935
 JOURNAL:- 4 1/4" x 8"
 " " BOX:- INTEGRAL.
 R.R. SPEC. NO.- NONE.
 SIDE BEARING:-
 " " FRAME:- A.S.F. PATT. NO. 7301.
 SPRINGS:- A.S.F. DRAWING 29940. ELLIPTICAL.

TYPE OF TRUCK:- PRESSED SPRING PLANK
 WITH ELLIPTIC SPRINGS.
 WHEELS:- 650 LB. CAST IRON.
 WEIGHT OF BOLSTER:- 720 LBS.
 " " SIDE FRAME:- 515 LBS
 " " ONE TRUCK:-

CARS:- 94
 D.T. & I.

MOTIVE POWER DEPT. 9-1-42
 REVISION
 5-16 3/57 11-57 5461 2/65 1-66 7/10
 358 SVR. FSM FAM A.L. / TO



- GENERAL -

BUILDER - INTERNATIONAL RY CAR & EQT. MFG. CO.
 YEAR BUILT - 1948-1949
 BUILDERS REF -
 R.R. SPEC. NO. - NONE
 NO. BUILT - 18
 AVER. LIGHT WT. - 50500
 LENGTH OVER STRIKERS - 37'-4"

- BODY -

AIR BRAKE MFG. - WESTINGHOUSE
 AIR BRAKE SCHEDULE - AB 1012
 BODY CENTER PLATE - DROP FORGED
 " SIDE BEARING - O.H. STEEL
 CENTER SILL - 2-Z-26; 12.4#/FT.
 " COVER PLATE - 3/8" X 20"
 " AREA - 32.18 SQ. IN.
 COUPLER - 6 1/2" X 6" TYPE "E" BOT. OPER.
 " RELEASE RIGGING - STD. SAFETY
 " CENTERING DEV. - "UNION"
 DRAFT GEAR - W.H. MINER A-28-XB
 END SILL - SPEC. "U" SECTION
 FLOORING - STEEL + SUB + WEARING 25/32

BODY (CONT.)

GENERAL DWG. - 2E-18D, DT&I DWG V-2442
 HAND BRAKE - 2 - AJAX CONSOLIDATED
 LINING - 1/2" PLYWOOD
 ROOF - STANRAY 7R-6717-B
 SIDE SILL - 3/8" X 5 X 3 1/2" ANGLE
 " BEARING CENTERS 4'-2"
 SHEATHING - 1/8" STEEL
 STOVE - VAPOR "CABAN" MODEL TCHA-55
 SUPERSTRUCTURE - STEEL
 RUNNING BOARD - APEX 1963A
 SIDE PLATE - STANRAY 7W-6525-B
 TOILET:

- TRUCK -

BOLSTER - STD. CAR TRUCK DWG. B-5534-K
 PATT. NO. WB-5534 (DT&I DWG. W-4643)
 BRAKE BEAM - #31 HANGER TYPE
 GENERAL DWG. - E-2357-B (DT&I Y-4641)
 JOURNAL - 3" X 9"
 " BOX - INTEGRAL
 SIDE BEARINGS - W.H. MINER
 SIDE FRAME - STD. CAR TRUCK DWG. B-5538-H
 PATT. NO. WT-5538 (DT&I DWG. W-4644)

SPRINGS: DOUBLE ELLIPTIC (DWG. Y-4415)
 SPRING PLANK: (DWG. Y-9065)
 TRANSOM: STD. CAR TRUCK DWG. B-5536-
 PATT. NO. TT-6006 (DT&I DWG. W-4642)
 TYPE OF TRUCK: BARBER SWING MOTION
 WHEELS: 1 WEAR WROT STEEL 33" DIA.

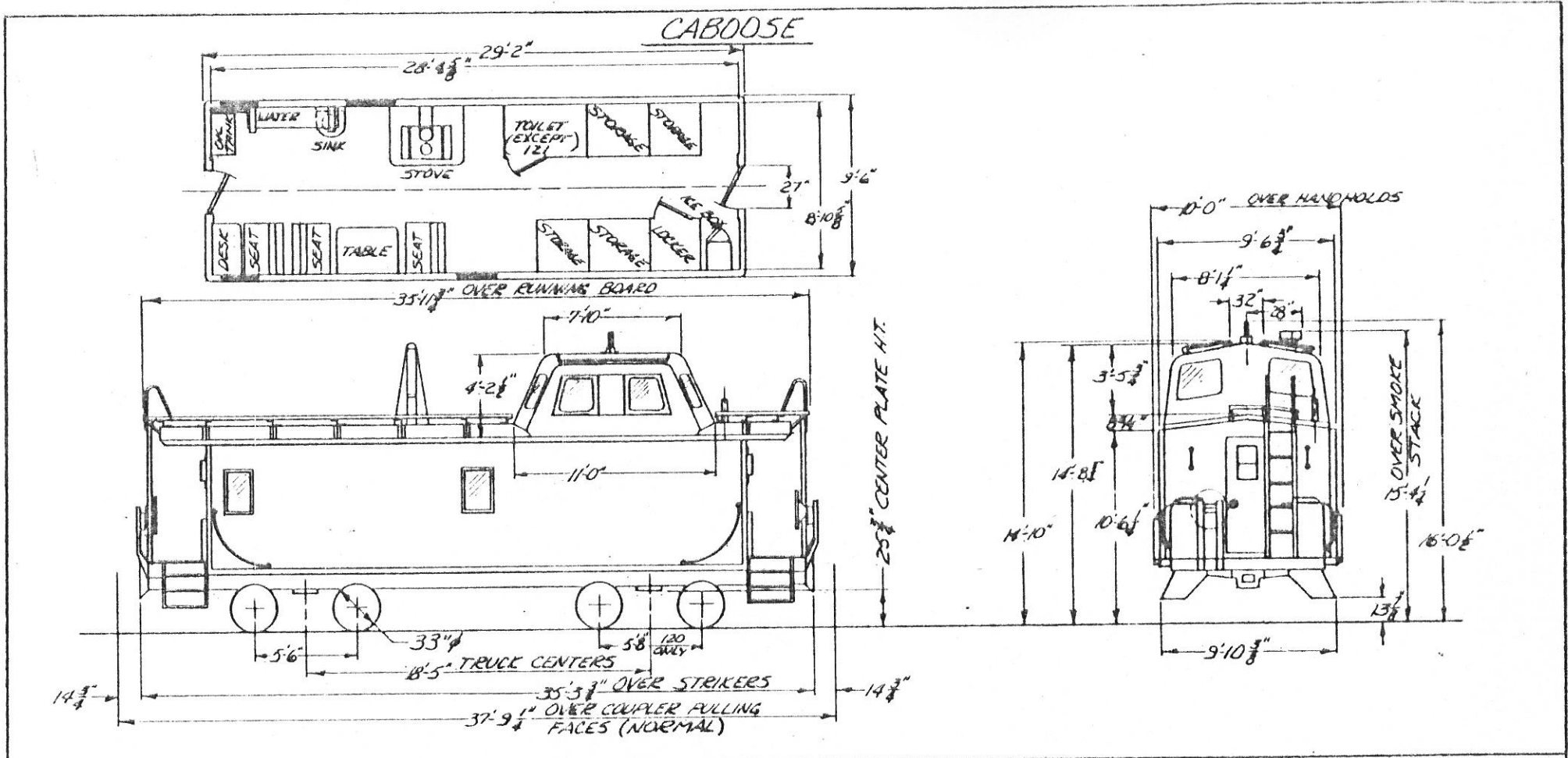
CARS 100-117

D.T. & I.

MOTIVE POWER DEPT REVISION

3/5	9/12	12/60	7/10
SR	21	RN	

6-6-51



- GENERAL -		HANDBOARDS: MINER D-3290 XL		- TRUCKS -	
BUILDER: 121, 122, 125	WABASH R.R.	OIL FILTER: VAPORE 4027 RE.		BOLSTER: STD. CARTRUCK W/B 352-A	
120, 123, 124	INTER. CAR CO.	OIL TANK: MINK DAYTON MODEL 31 (30 GAL.)		BOLSTER: (120 ONLY) STD. CARTRUCK W/B 3534-A	
YEAR BUILT: 121, 122, 125	1952	ROOF: STAIRWAY 72 9163-A		BRAKE BEAM: #18 HANGER TYPE	
120, 123, 124	1955	RUNNING BOARD: APEX 1531-B		BRAKE BEAM SAFETY: CEECO #1244 (120 ONLY) OR #1245	
BUILDERS REF: C5 241	WABASH R.R.	SIDE BEARING CENTERS: 4'-8"		GENERAL DWG: SCT E-2350-D (120 ONLY)	
107 228	INTER. CAR CO.	SIDE LINING: 25/32" T & G. FIR		JOURNAL: 2 1/2" X 8" (120 ONLY) 5" X 9"	
NO. BUILT: 77 (FOR AWW ARBOR R.R.)		SIDE SILL: 5" X 3 1/2" X 3 1/2" ANGLE		SIDE BEARINGS: MINER N-730	
AVERAGE LT. WT: 46,700 LBS.		SIDE SHEATHING: 1/2" GA. STEEL DIVIDED		SIDE FRAME: SCT. WT. 320-C (120 ONLY) SCT. WT. 355	
- BODY -		STEP TREADS: APEX DWG. 139 (INTER. CAR CO.)		SPRINGS: DOUBLE ELLIPTIC (120 ONLY) Y-4473	
AIR BRAKE MFR: SECOND HAND (WABASH R.R.)		SPRINKLER: CABAN #1400 (120 ONLY)		SPRING PLATE: DIT. DWG. Y-9063	
AIR BRAKE SCHEMATIC: A4 10X12		THEORETICAL DRAIN VALVE: 3/4" CS ON TANK END		TRANSOM: SCT. TT-408 (120 ONLY) N-3580-A	
BODY CENTER PLATE: STD. FORM CO. A 1883-F 11 1/4"		TOILET: MICROPHONE LE 100 (121 ONLY)		TYPE OF TRUCK: BARBER SWING MIDWAY	
BODY SIDE BEARINGS: A5F-A 1231-3		WASHSTAND: MINK DAYTON #1112 FLH		WHEELS: LUGAR W/OT STEEL A-333	
CENTER SILL: 2 ROLLED 865 @ 96.21 #/FT WITH 3/8" X 1/2" COPPER COVER PLATE		WATER COOLER: MINK DAYTON MODEL 6A			
CENTER SILL AREA: 2880 SQ. IN.		WATER TANK: MINK DAYTON MODEL 26 (30 GAL.)			
COUPLER: 6 1/4" X 8" TYPE E, TOP OPERATED		WINDOZZES: CARBODY: ADAMS WESTLAKE DWG. 1250-D			
COUPLER RELEASE: BUSHING, TYPE 8, STANDARD, MIN. SEC. 4		CUDA END: ADAMS WESTLAKE OR. SET-A			
DRAW: MERT. 2007 PAPER X2 1/8" X 6 1/2"		CUDA SIDE: ADAMS WESTLAKE DWG. 1263-D			
DRAWY BEAR: MODEL A-28-XA		DOOR: ADAMS WESTLAKE DWG. 1264-D			
DRAWY BEAR ATTACHMENT: C&N STEEL 283, NO. 108		WINDOW SCREENS: CARBODY: ADAMS WESTLAKE DWG. 1265-D			
END PLATE: 105 GYPSUM 85 0000-E (OFF) DWG. 108		CUDA SIDE: ADAMS WESTLAKE DWG. 1266-A			
GENERAL DWG. DIT. V-10210		CODE: ADAMS WESTLAKE CH-1375			

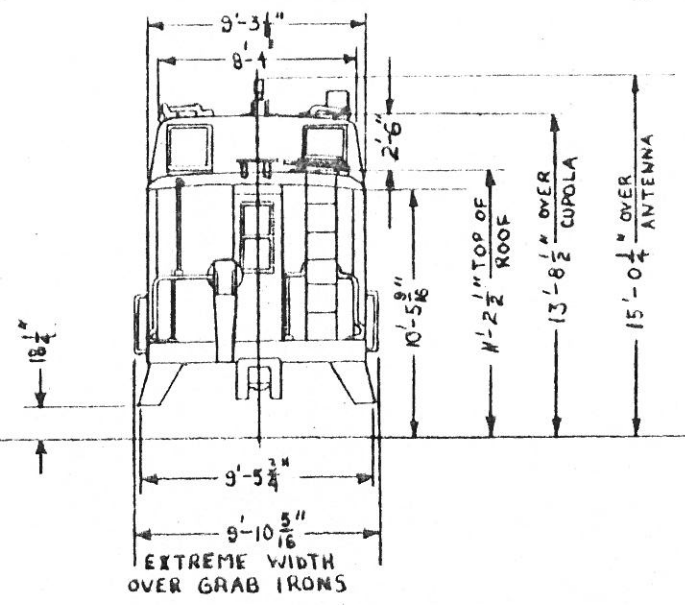
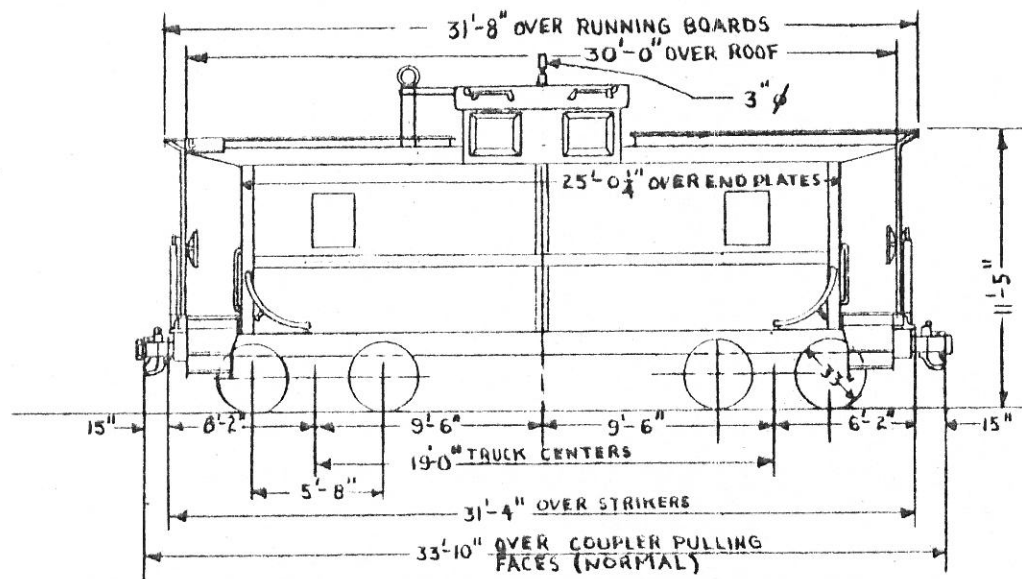
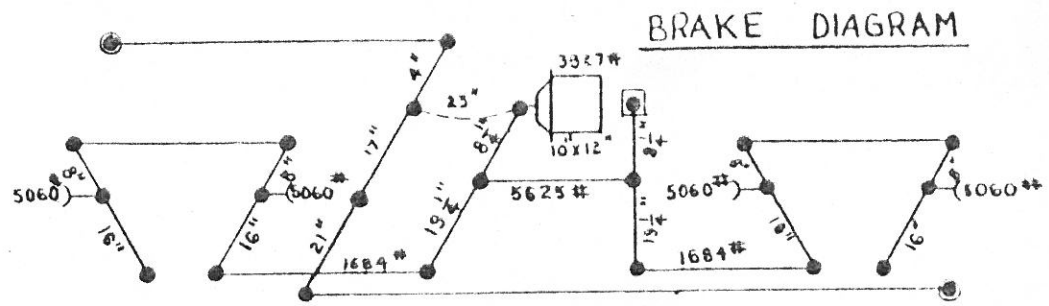
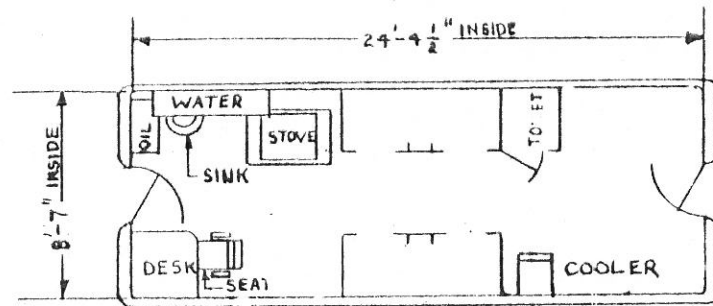
CARS: 120-125

D.T. & I.

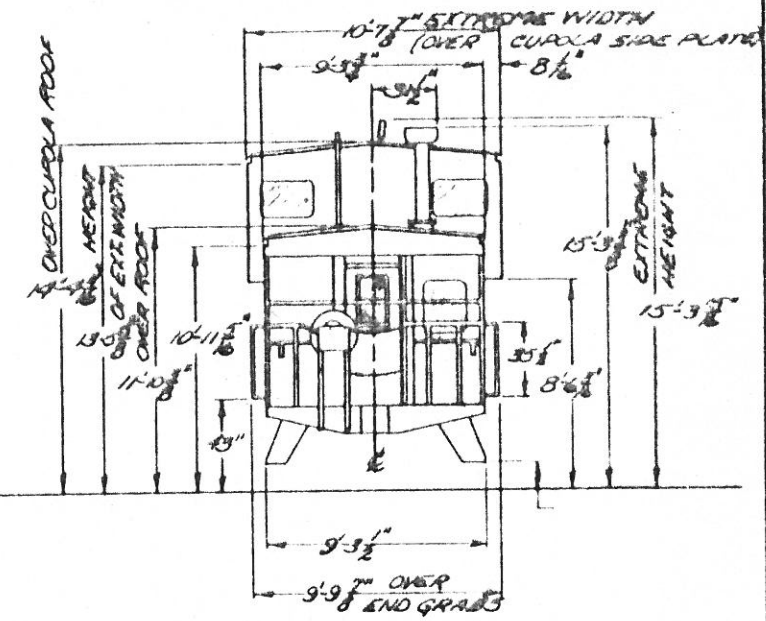
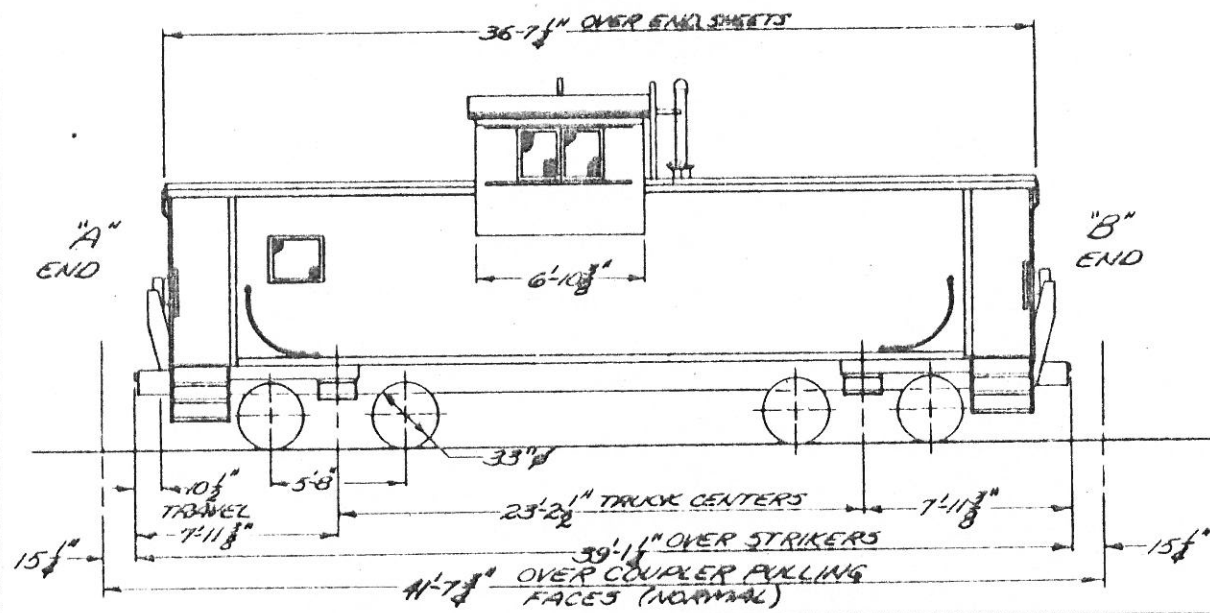
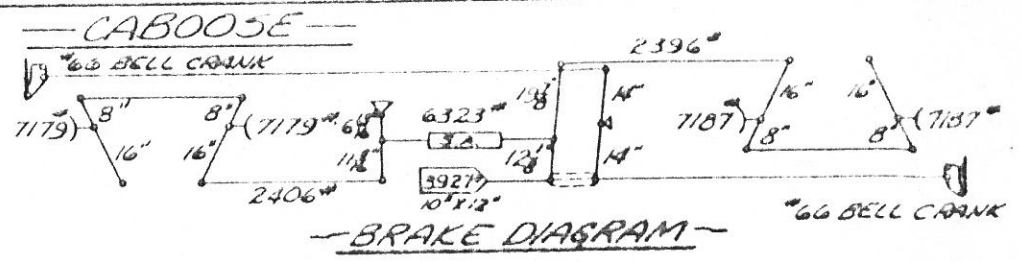
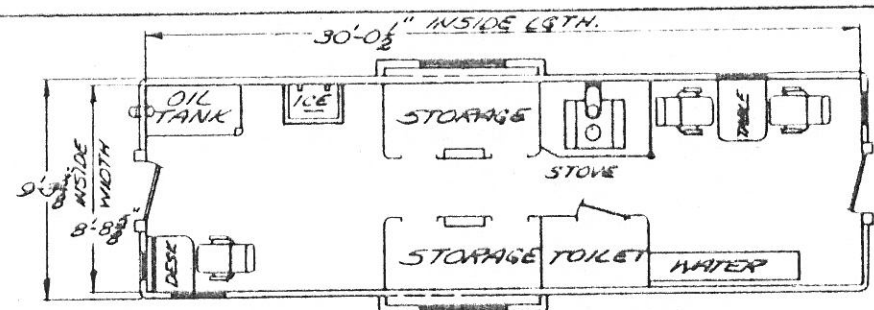
MECHANICAL ENGINEERING DEPT. 7-6-70

- REVISION -

2/73

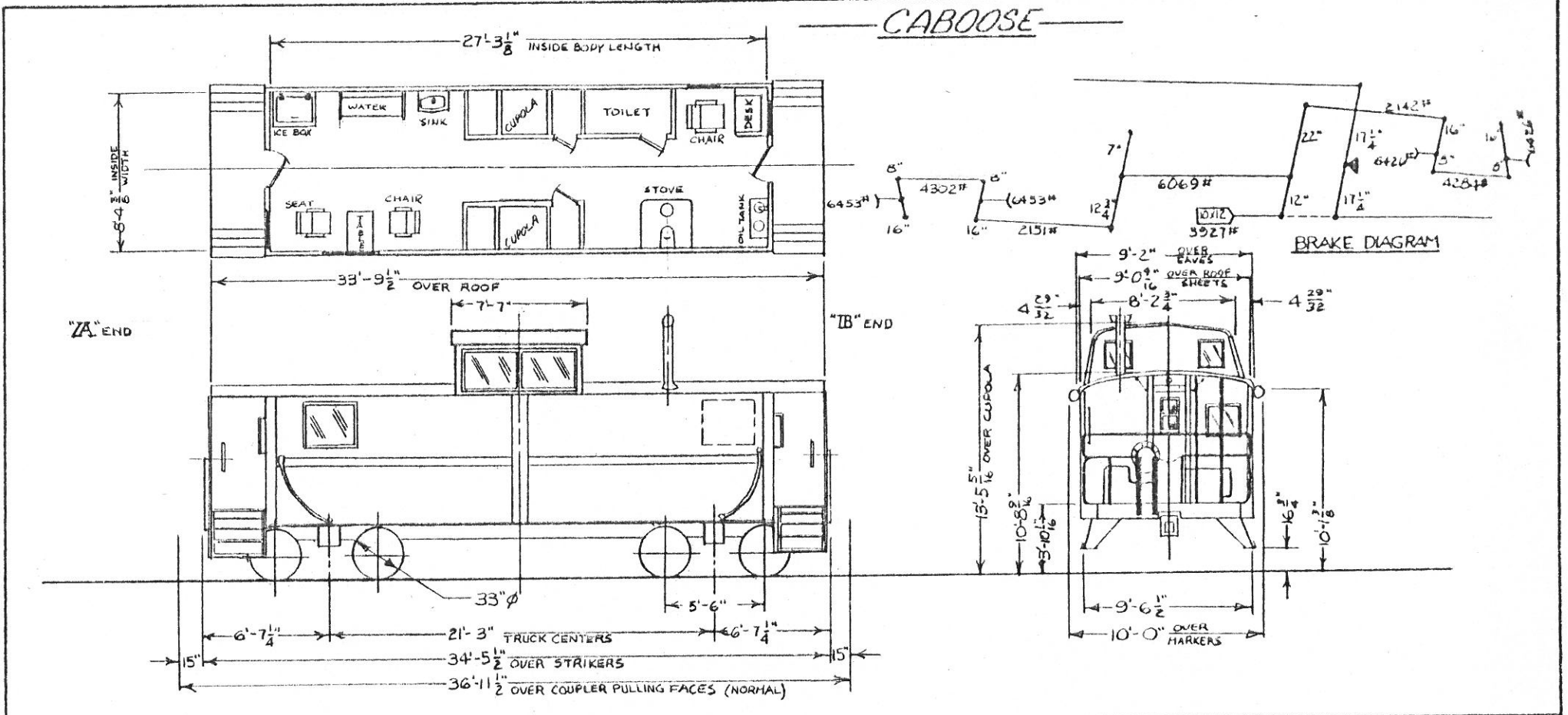


<p align="center">— GENERAL —</p> <p>BUILDER: READING RAILROAD YEAR BUILT: 1931 REBUILT 1969 BUILDER REF. CLASS NMH AVE. LT. WT.: 48,600 LBS.</p>		<p>RUNNING BOARD: APEX (FROM 16500 SERIES BOX CARS) SEAT: FREEDMAN #4092 SIDE BEARING CENTERS: 4'-8" SIDE LINING: 3/4" ARMORBORD SIDE SILL: CAST INTEGRAL WITH UNDERFRAME SIDE SHEATHING: 1/8" STEEL STEP TREADS: BLAW-KNOX 38-B-568 GALV. STOVE: VAPOR, "CABAN" MODEL TCHA-55 THERMAL DRAIN VALVE: OGONTZ PP-FR, 3/4" TOILET: MINK-DAYTON MODEL 110 WASHSTAND: MINK-DAYTON MODEL 112-FLH WATER COOLER: MINK-DAYTON MODEL 64 WATER TANK: MINK-DAYTON MODEL 26 (30 GAL.) WINDOWS: CARBODY: ADAMS WEST LAKE DM 8185 COUPOLA, END: ADAMS WEST LAKE DM 8181 COUPOLA, SIDE: ADAMS WEST LAKE DM 8182 DOOR: ADAMS WEST LAKE DM 8189 (COMPLETE) WINDOW SCREENS: CARBODY A/W DM 8184 COUPOLA SIDE A/W DM 8186 DOOR A/W CM 4375</p>	<p>PATT. NO. WB-5534-A (DWG. W-4643) BRAKE BEAM: #18 HANGER TYPE BRAKE BEAM SAFETY: CRECO 12417-3 (DWG. X-9093) GENERAL DWG. STD. CAR TRUCK E-2402 (DWG. W-9006) JOURNALS: 5" X 9" SIDE BEARINGS: STD. CAR TRUCK L-20-R (DWG. X-9080) SIDE FRAME: STD. CAR TRUCK DWG. B-5538-H PATT. NO. WT-5538 (DWG. W-4644) WITH WASTE RETAINER RIBS SPRINGS: DOUBLE ELLIPTIC (DWG. Y-4415) SPRING PLANK: DT & I DWG. Y-9065 TRANSOM: STD. CAR TRUCK DWG. B-5580- PATT. NO. TT-5580 (DWG. W-9077) TYPE OF TRUCK: BARBER SWING MOTION WHEELS: 1 WEAR WROUGHT STEEL</p>
<p align="center">— BODY —</p> <p>AIR BRAKE MFG.: WESTINGHOUSE AIR BRAKE SCHEDULE: AB 10x12 BODY CENTER PLATE: 11 3/4" GSC PATT. 21511-2 BODY SIDE BEARINGS: 3/8" HARDENED STEEL CENTER SILL: CAST INTEGRAL WITH UNDERFRAME COUPLER: 6 1/4" X 8" SLOTTED "E" TOP OPERATED COUPLER RELEASE RIGGING: READING CO. DOOR: MET-L-WOOD (DWG. X-9086) DRAFT GEAR: CARDWELL-WEST. NY-11-H DRAFT GEAR ATTACHMENT: "FARLOW" 2 KEY-YOKE DWG. Y-5412 GENERAL DWG: V-9063 HAND BRAKE: AJAX OIL FILTER: VAPOR 4024-RR OIL TANK: MINK-DAYTON MODEL 31 (30 GALLONS) ROOF: READING CO. (DT & I DWG. W-8007)</p>		<p>— TRUCK — BOLSTER: STD. CAR TRUCK DWG. B-5534-K</p>	<p>CARS: 130-134 D.T. & I. RAILROAD MECHANICAL ENGINEERING DEPT. 11-8-89</p>



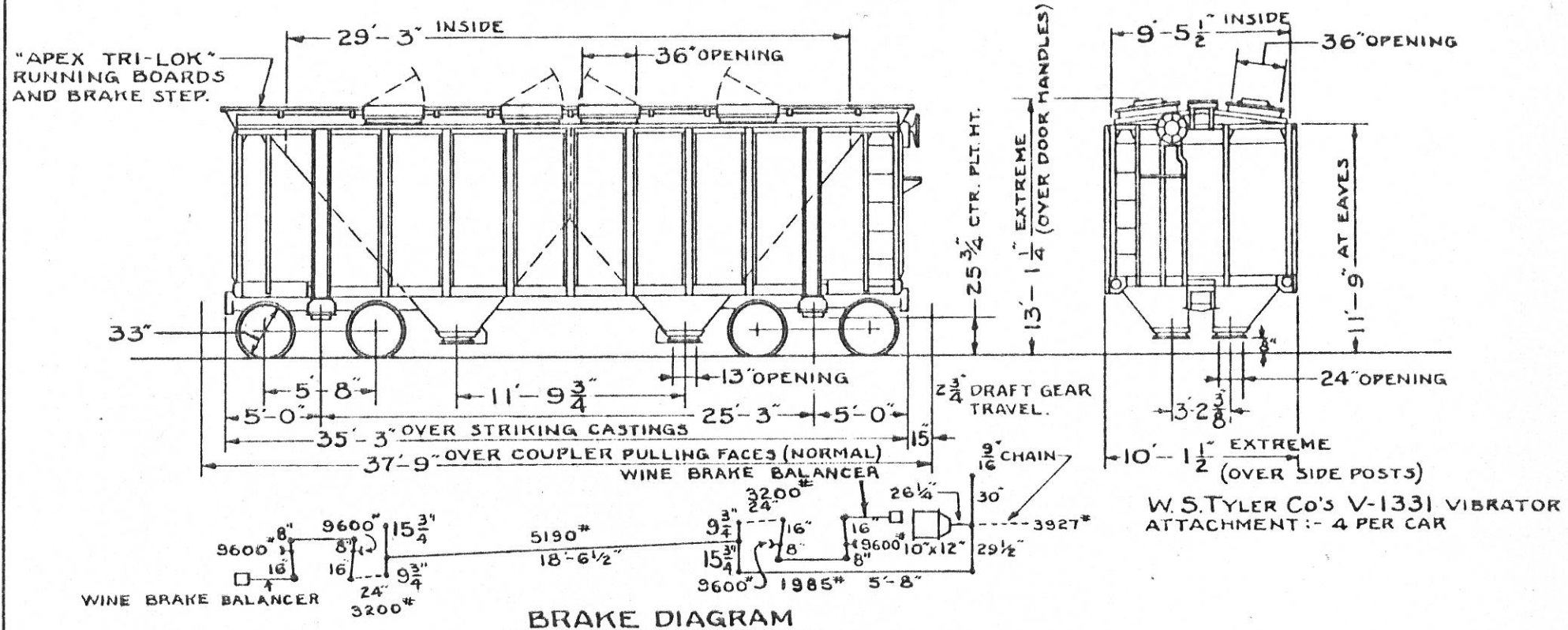
<p align="center">- GENERAL -</p> BUILDER: INTERNATIONAL CAR CO. YEAR BUILT: 1979 BUILDER'S REF.: 800 NO. BODY: 6 AVE. LT. WT.: 51,900 LBS.		HANDBAKE: UNIVERSAL 2850 ICE BOX: HARVEY METAL CONTAINER, MP-33333-B LINING: 1/2" MET-L-WOOD OIL FILTER: GENERAL FILTER U-25A OIL TANK: ICC 130-65 (56 GAL.) AXES: STANWAY - CR 8007-A (DTI X-11258) SEATS: HARKOVER TYPE (3) CURCHA CAP EQUIP #15589 RESTAL TYPE (2) CORNY CAR EQUIP. 1489905		PART. NO. W-5577-A (DTI DWG. W-11275) BRACE BEAM: #18 UNIT GENERAL DWG. SGT. E-2399-D (DTI DWG. W-11279) AXLES: 5 1/2" X 10" JOURNAL BEARINGS: BREMCO 5 1/2" X 10" S-A BOX BEARINGS: STUCKI 582-CR (RESILIENT) SIDE FRAMES: STD. CAP TRUCK DWG. B-5577-C PART. NO. (DTI DWG. W-11279)	
<p align="center">- BODY -</p> AIR BRAKE MFG.: NEW YORK AIR BRAKE AIR BRAKE SCHEDULE: A B D, 10" X 12" CYL. (NO RETURN) BODY CENTER PLATE: CENTER FILLER 7 1/2" CRISTER (PRESSURE PART NO. C9724) BODY SIDE BEARINGS: "HOLLUBE" 28-594 CENTER SILL SLIDING: 2-2-26 @ 4 1/2" X AXLED REE SPRING: 13 @ 3 1/2" X 11" CHAINWEL CENTER SILL AREA SLIDING: 24.24 SQ. IN. STAT. WPT.: 18.7 SQ. IN.		SIDE SILL: 5" X 5" X 1/2" ANGLE SIDE SHEATHING: #10 GALV. G. S. SLACK ADJUSTER: S.A.B. CRV-USA-DJ. STEP THREADS: US GYPSUM 95-1000 STOVE: VAAAP "CABAN" MODEL TCHA-55 THERMAL DRAW VALVE: ORONITE P-P-99-FASR TOILET: MURKAMP LF 300 WASH STAND: WASH-DAYTEW 1112-FAN WATER TANK: ICC 130-65 (56 GAL.)		WINDOVS: CAR BODY LEFT SIDE - J.T. NELSON C-1300-18 CAR BODY RIGHT SIDE - J.T. NELSON C-1500-15 CURULA - END - J.T. NELSON C-1500-15 CURULA - SIDE - J.T. NELSON C-2500-29 DOORS - J.T. NELSON C-1300-19 (ALL WINDOVS GLAZED WITH 1/4" CERAMIC GLASS)	
COUPLER: E 20 CRT COUPLER RELEASE MCGING: STANWAY 107075-D (DTI DWG. W-11853) CUSHIONING DEVT. DISSEPER CABOOSSE - 10 1/2" PAVELZ AIR: MET-L-WOOD 5-1574 DRIVE GEAR: WAGS-PAT WAM-CB-5 GEAR: STANWAY END PLATE: BLAN-ENOX POC 376 GENERAL DWG: ICC 16-E-82-D (DTI X-11206)		WINDOVS: CAR BODY LEFT SIDE - J.T. NELSON C-1300-18 CAR BODY RIGHT SIDE - J.T. NELSON C-1500-15 CURULA - END - J.T. NELSON C-1500-15 CURULA - SIDE - J.T. NELSON C-2500-29 DOORS - J.T. NELSON C-1300-19 (ALL WINDOVS GLAZED WITH 1/4" CERAMIC GLASS)		CARS: 140-145 D.T. #1 MECHANICAL ENGINEERING DEPT. 1-16-74 - REVISIONS -	

CABOOSE



- GENERAL -		ROOF: MAGOR 3/32" C.B.S. RIVETED SEATS: COACH & CAR EQUIP. CORP. CONDUCTOR'S CHAIR: #1489303 (2) WALKOVER CAB SEAT: #1475305 (1) SIDE LINING: 3/4" PLYWOOD SIDE SILL: 5" ZEE @ 11.6 #/FT. SIDE SHEATHING: STEP TREADS: 1KG INDUSTRIES STOVE: VAPOR CORR TCHA-55 "CABAN" THERMAL DRAIN VALVE: OGONITZ 3/4" #PP-39 FASR TOILET: MICROPHOR #36-00-000 (D-2027-A) WASHSTAND: MINK-DAYTON #1112 FLH WATER TANK: MINK-DAYTON 30 GAL. MODEL 27 WINDOWS: J. T. NELSON CO. CUPOLA & BODY END: J.T. NELSON C-3500-36 (24 3/4" x 24 1/2") CUPOLA SIDE: C-2900-39 (78 3/8" x 28 1/2") BODY SIDE (FIXED) J.T. NELSON C-3500-36 (30 1/4" x 38 1/2") BODY SIDE @ CONDUCTOR'S DESK: C-2900-39 (38" x 30") (ALL WINDOWS GLAZED WITH 3/16" LEXAN MR-4000)	PATT. NO. WB-325-A BRAKE BEAM: #18 HANGER TYPE GENERAL DWG: STD. CAR TRUCK A-4269 JOURNALS: 4 1/4" x 8" SIDE BEARINGS: SIDE FRAME: STD. CAR TRUCK DWG. B-5213-H PATT. NO. W1-329-C SPRINGS: DOUBLE ELLIPTIC (DWG. Y-4415) SPRING PLANK: D.T. & I. DWG. Y-9065 TRANSOM: STD. CAR TRUCK DWG. B-5310 PATT. NO. TT-391 TYPE OF TRUCK: BARBER SWING MOTION WHEELS: 33" ONE WEAR CAST STEEL CU-33
- BODY -		BUILDER: MAGOR CAR CORP. YEAR BUILT: 1940 (FOR NORFOLK SOUTHERN RR) YEAR REBUILT: 1976 JACKSON SHOP BUILDER REFERENCE: ORDER 9615 AVE. LT. WT. 44,500 LBS.	
- TRUCK -		BOLSTER: STD. CAR TRUCK DWG. B-5312-L	CARS: 150-153 D. T. & I. MECHANICAL ENGINEERING DEPT. 2-14-79 - REVISIONS -

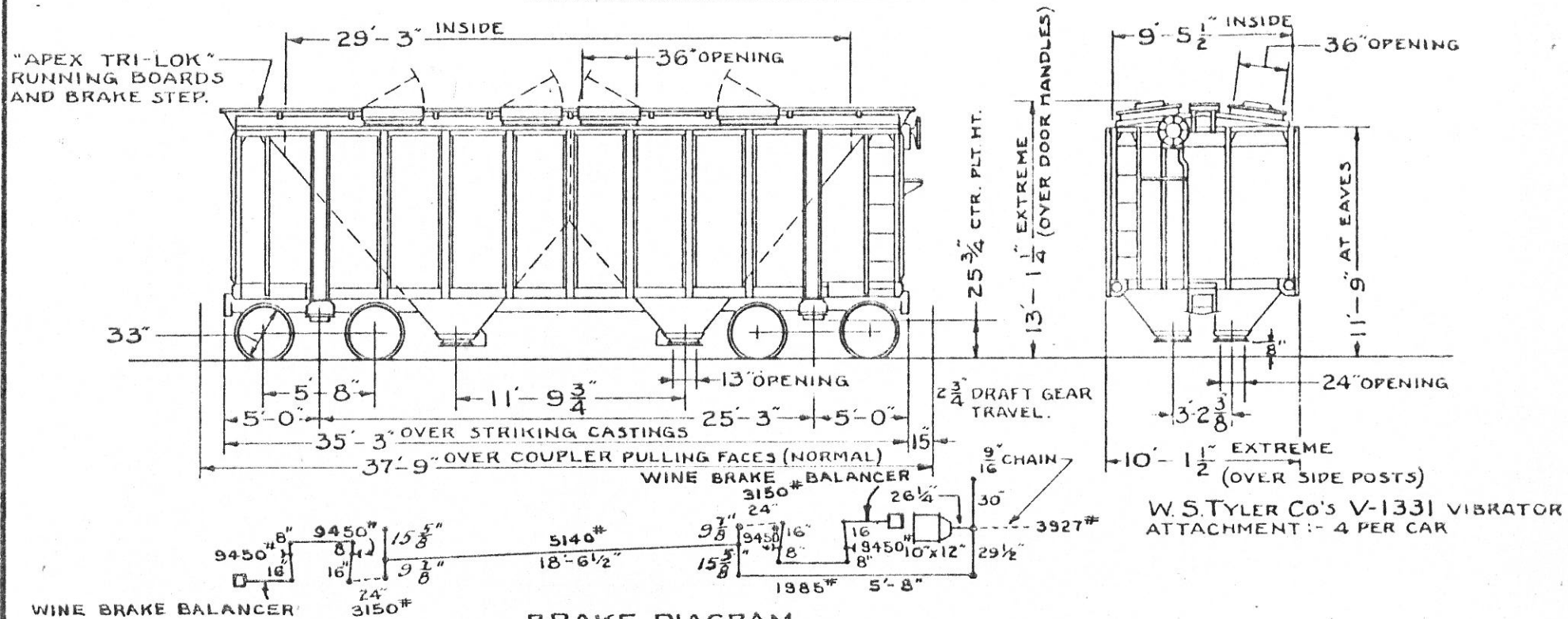
77-TON COVERED HOPPER



- GENERAL -		- BODY (CONT) -							
BUILDER: GREENVILLE STEEL CAR CO		DRAFT GEAR: - W.H. MINER - A-22-XB							
YEAR BUILT - 1946		" " YOKE - C.S. VERT. A.S.F.							
BUILDER'S REF - O.D. 463		END SILL - 5" x 3 1/2" x 3/8" ANGLE							
R.R. SPEC. NO. 115		GENERAL DRAWING: 16001-A DT&I V-2449							
A.A.R. CLASS - LO		HAND BRAKE - "EQUIPCO"							
NO BUILT - 200		SIDE SILL - BUILT UP - 6" x 3 1/2" x 3/8" L							
CAPY. - 1958 CU. FT.		- TRUCK -							
AVER. LT. WT. 51400; LD. LIMIT - 168600		BOLSTER - BUCKEYE - PATT. NO B-741							
- BODY -		BRAKE BEAM - UNIT TYPE - "CRECO" #3							
AIR BRAKE MFG. NEW YORK AIR BRAKE CO.		CENTER PLATE - INTEGRAL							
SCHEDULE - FB		GENERAL DRAWING - 1							
BODY CENTER PLATE - DROP FORGED		JOURNAL - 6" x 11"							
CENTER SILL - 2-Z-26; 82.4 1/2 FT.		" BOX - INTEGRAL							
" AREA - 24.24 SQ. IN.		R.R. SPEC. NO.							
COUPLER - "E" 6 1/2" x 8" BOT. OPERATING		SIDE BEARINGS - STUCCO							
" RELEASE RIGGING - "IMPERIAL" KOT.		SIDE FRAME - BUCKEYE. PATT. # F740, DT&I DWG. W. 4080							
DOORS - ROOF: - CAR BUILDER'S		WITH WASTE RETAINER RIBS, AAR IDENT NO. B-117							
" HOPPER - "ENTERPRISE"		SPRINGS - COIL - ELLIPTIC, AM. SPIRAL SPRING CO.							
DOOR FIXTURES - ROOF, BUCKEYE & GREENVILLE		WHEELS - ONE WEAK WKT STEEL - 33" DIAM.							
" HOPPER - "ENTERPRISE"		REVISIONS							
		DT&I							
		MOTIVE POWER DEPT. 6-15-51							
11/57	12/60	5-62	7-63	5					
FR	RI	FAM	FAM	/	TO				

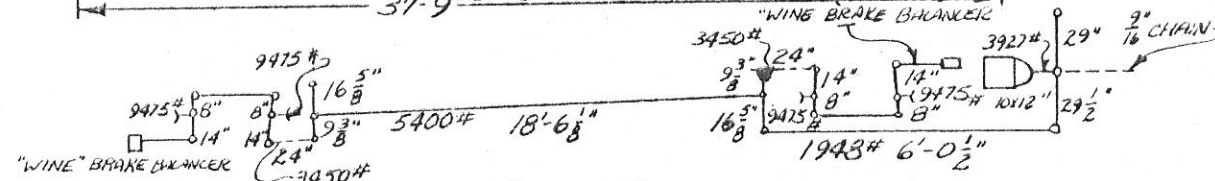
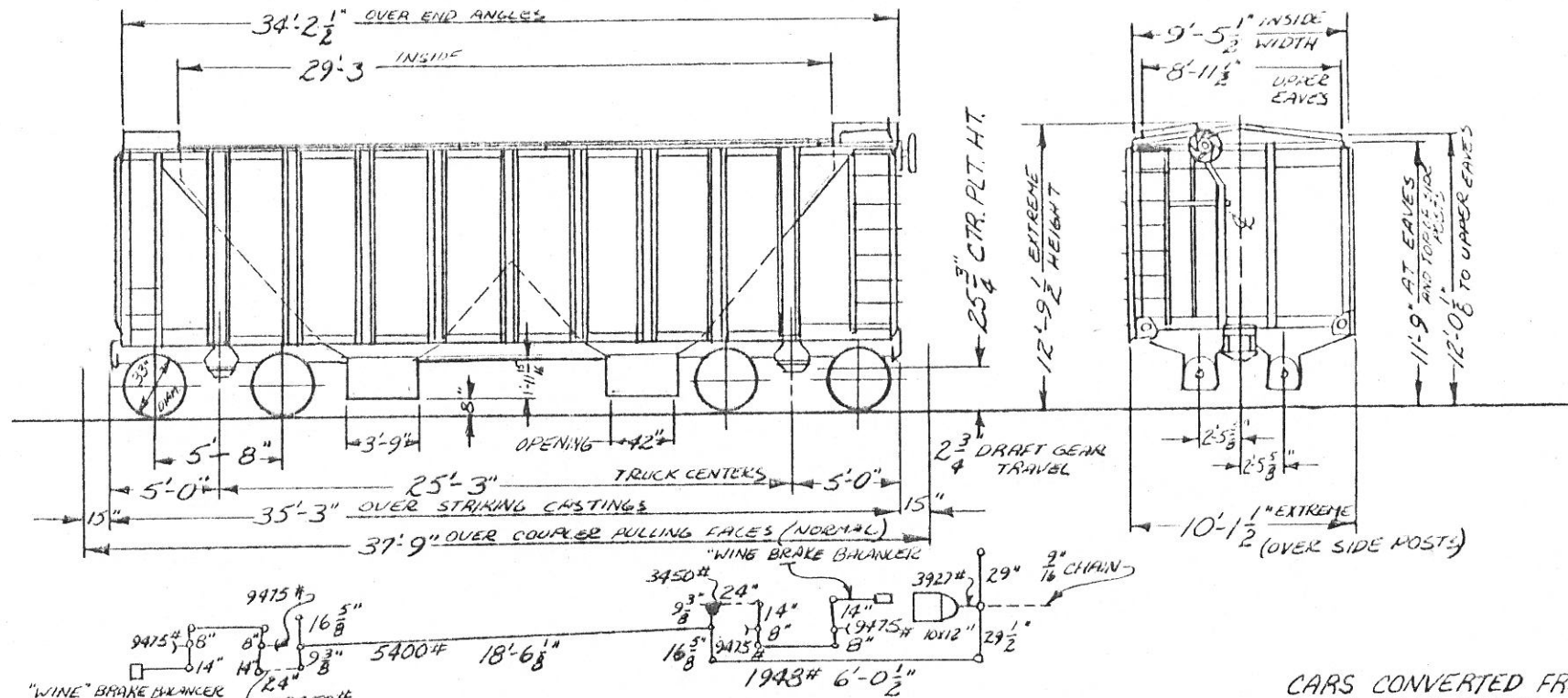
CARS: 8000, 02, 03, 04, 08, 09

77-TON COVERED HOPPER



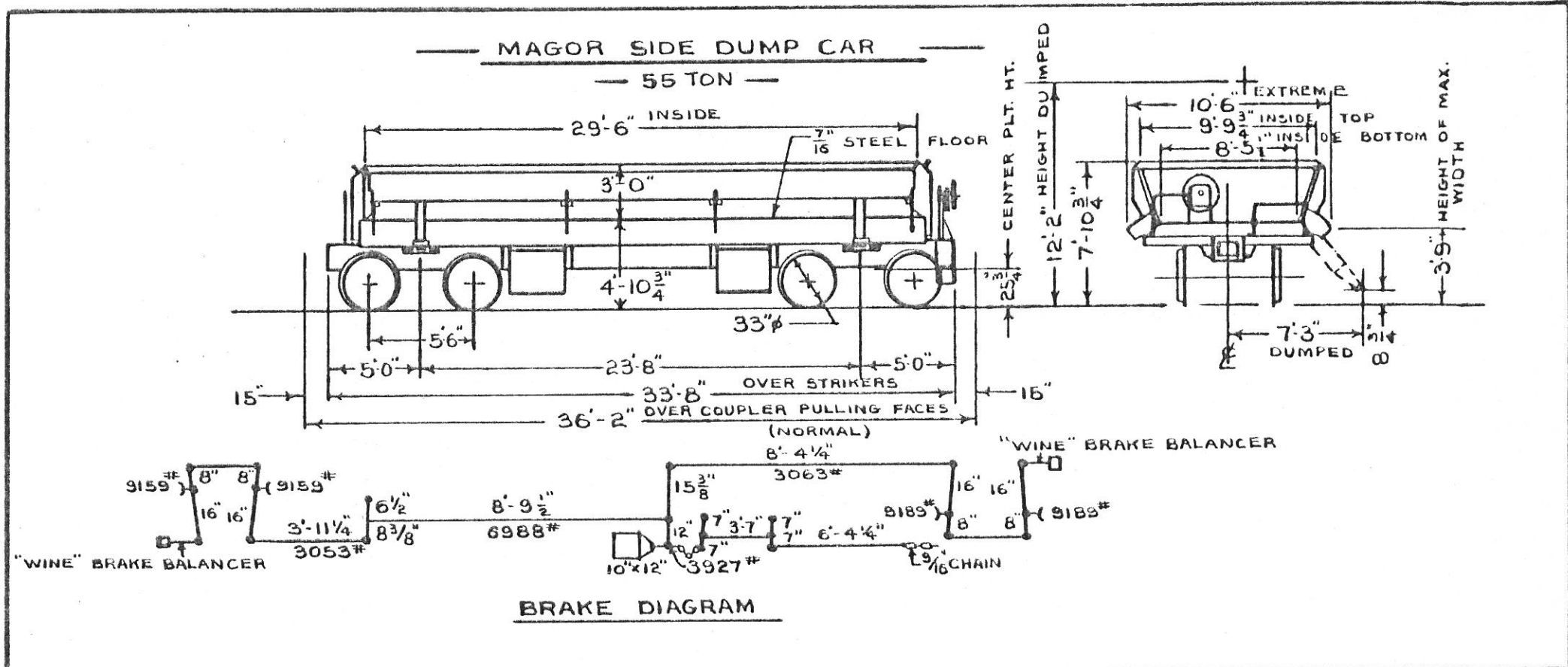
GENERAL	BODY (CONT)	TRUCK (CONT)
BUILDER - AMERICAN CAR & FOUNDRY CO	DRAFT GEARS - W.H. MINER A-22-XL	TYPE OF TRUCK - TOT. SPRINGPLANKLESS - UNIT
YEAR BUILT - 1949	YOKE - C.S. VERT. NAT'L. MALL.	WHEELS - ONE WEAR WROT STEEL - 33" DIA.
BUILDER'S REF. - 3339	END SILL - 5" X 3 1/2" X 3/8" L	
R.R. SPEC. NO. 121	GENERAL DRAWING 61-21698-E DT&I DWG V-2450	
A.A.R. CLASS LO	HAND BRAKE - "EQUIPCO"	WEIGHT OF ONE TRUCK: - 84.00*
NO. BUILT - 100	SIDE SILL - BUILT UP - 6" X 3 1/2" X 3/8" L	
COPY - 1958 CLET.	SLACK ADJUSTERS - WINE	
AVER. LT. WT. 50,000 LBS.; LD. LIMIT 170,000 LBS.		
BODY	TRUCK	
AIR BRAKE MFG. - NEW YORK AIR BRAKE CO	BOLSTER - BUCKEYE PATT NO. B-741	
" SCHEDULE - AB	BRAKE BEAM - UNIT TYPE - "CRECO" 43	
BODY CENTER PLATE - DROP FORGED	CENTER PLATE - INTEGRAL	
CENTER SILL - 2-2-26; 82.4 LB/FT.	GENERAL DRAWING	
" AREA - 24.24 SQ. IN.	JOURNAL - 6" X 11"	
COUPLER - "E" 6 1/2" X 8" BOT. OPER.	" BOX - INTEGRAL	
REL. RIGGING - "IMPERIAL" ROTARY	R.R. SPEC. NO. 117	
DOORS, ROOF - CAR BUILDERS	SIDE BEARINGS - STUCKI	
HOPPER - "ENTERPRISE"	SIDE FRAME - BUCKEYE PATT # F-769, DT&I DWG: W2817	
DOOR FIXTURES - 800" - CAR BUILDERS	WITH WASTE RETAINER RIBS, A.A.R. IDENT # B-47	
HOPPER - "ENTERPRISE"	SPRINGS - COIL-ELLIPTIC, SYMINGTON-GOULD	
		CARS: 80005-80007
		DT&I
		MOTIVE POWER DEPT. 6-15-51
		REVISIONS
		11/51 12/60 5-62 5/70

77-TON BALLAST CAR



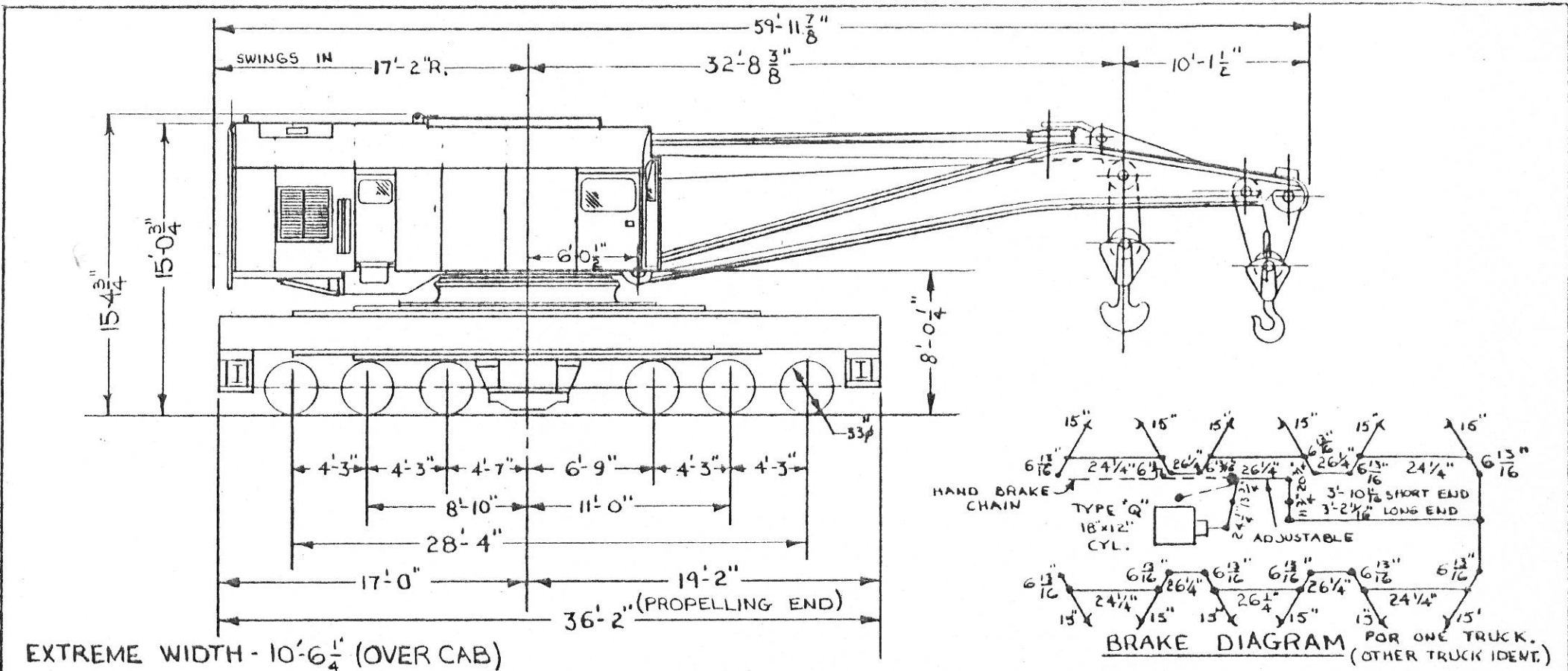
CARS CONVERTED FROM
11000-11099 SERIES
COVERED HOPPER CARS.

<u>GENERAL</u>		DRAFT GEAR: W.H. MINER A-22-XL	SPRINGS: A.A.R. D-5 14 OUTER AND 10 INNER COILS PER TRUCK, 3 1/4" TRAVEL
BUILT BY: AMERICAN CAR & FOUNDRY		DRAFT GEAR ATTACHMENT: C.S. YOKE - V40AHT	TYPE OF TRUCK: A.S.F. A-3 RIDE CONTROL
YEAR BUILT: 1953 (CONVERTED 1978 & 1979)		END SILL: 9" C @ 15 LB. - 9' - 4 3/8"	70 TON SPRINGS PLANLESS, EQUIPPED FOR UNIT BRAKE BEAM
BUILDER'S REF: LOT 01.3844		GENERAL DRAWING: ACF 620-7452-B DT&I DWG. V-2102	WEIGHT OF TRUCK: 8330#
BUILDER'S SPEC. NO: 3169266 - REV B OF 6-25-53		HAND BRAKE: W.H. MINER - D-3290-XL	WHEELS: ONE WEAR STEEL J-33 OR G1-33
A.A.R. CLASS: MVB		SIDE SILL: BUILT-UP - 6" x 3 1/2" x 3/8" L	
NUMBER CONVERTED: 10		SIDE BEARING CENTERS: 4'-2"	
CAPACITY: 1958 CU. FT.		-TRUCK-	
AVERAGE LIGHT WEIGHT: 46,600 LBS.		BOLSTER: A.A.R. CODE B7A-03DN - BN A.S.F. PATT. NO. 21132 (DT&I DWG. W-1760) A.A.R. IDENT. NO. B-1242	
AVERAGE LOAD LIMIT: 173,000 LBS.		BRAKE BEAM: UNIT TYPE A.A.R. NO. 18	
<u>-BODY-</u>		CENTER PLATE: INTEGRAL	CARS: 85000-85018 D.T. & I. MECHANICAL ENGINEERING DEPT. 12-20-78 - REVISIONS -
AIR BRAKE MFG: NEW YORK AIR BRAKE CO.		GENERAL DRAWING: A.S.F. - 70489-B DT&I W-2335	
AIR BRAKE SCHEDULE: STANDARD AB 10X12"		JOURNAL: 6" X 11"	
BODY CENTER PLATE: DRIP FORGED STEEL 13 3/4"		JOURNAL BOX: INTEGRAL	
BODY SIDE BEARING: ROLLED SECTION (HARD STEEL)		SIDE BEARING: "STUCKI" 656-C	
CENTER SILL: 22-28 @ 41.2 LB/FT. EA.		SIDE FRAME: A.A.R. CODE F11-02AA-UA BUCKEYE PATT. NO. F1015 (DT&I W-2330) A.A.R. IDENT. NO. B-241	
CENTER SILL AREA: 21.24 SQ. IN.			
COUPLER: EGOCHT			
COUPLER RELEASE KICKING: STANRAV 1U-10.340 A			
DOORS: MORRISON-KNIBSON 32" CONTROL FLOW (3-PLAST) PART NO. HK-PRD-12A			

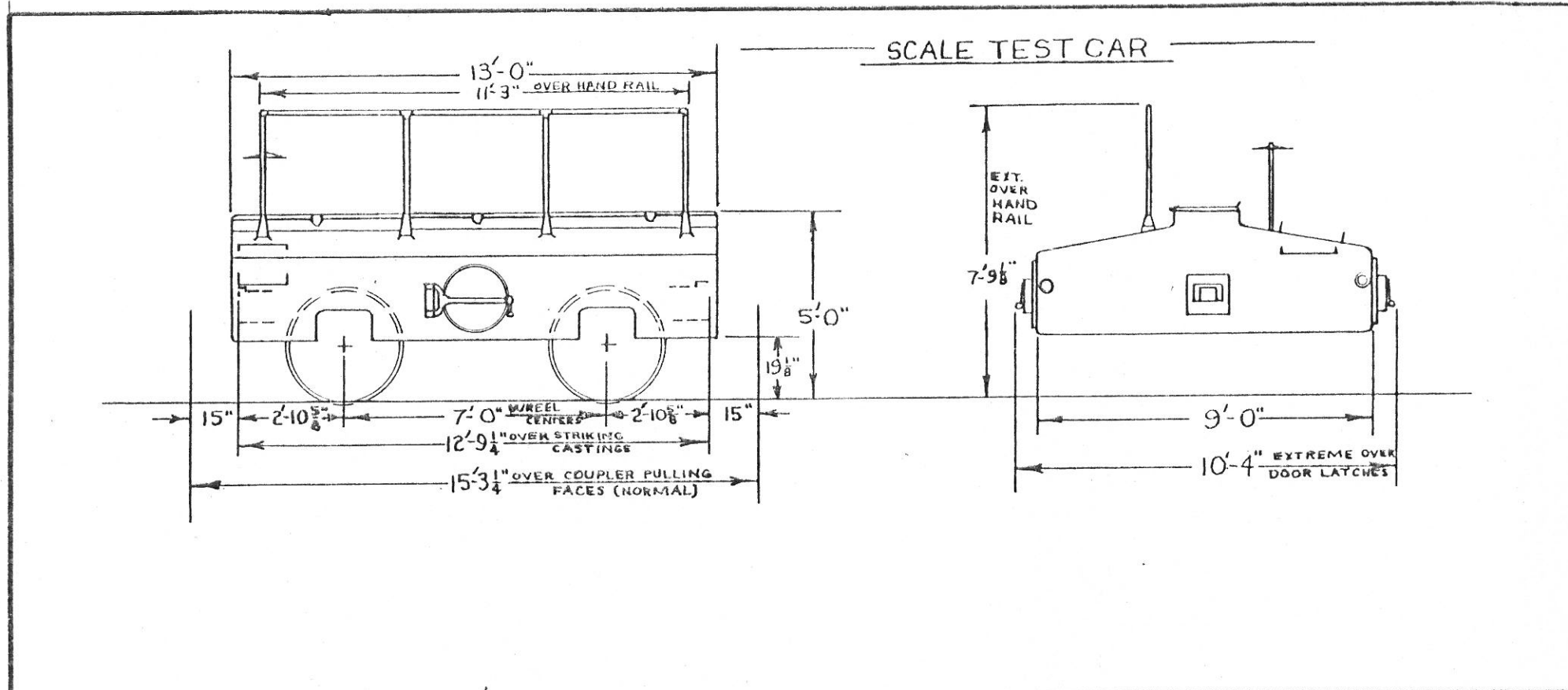


BRAKE DIAGRAM

— GENERAL —		DRAFT GEAR ATTACH: A.A.R. C.S. YOKE (NMB50)	WEIGHT OF ONE TRUCK: 7035 LBS.
BUILDER: MAGOR CAR CORP		END SILL: BUILT UP, 3"x3"x3/8"Z & 5/16" PLT.	
YEAR BUILT: 1949		GENERAL DWG: A-15731	
BUILDERS REP: W-1627		HAND BRAKE: MINER D-3290-X	
R.R. SPEC. NO.: NONE		SIDE BEARING CENTERS: 4"-8"	
A.A.R. CLASS: MWD		SLACK ADJUSTER: WINE	
NO. BUILT: 10			
CAPY: 810 CU.FT. (30 CU.YDS)			
AVE. LT. WT: 56,900 LBS.			
AVE. LD. LMT: 120,100 LBS.			
DUMP ANGLE: 47° FROM HORIZONTAL			
— BODY —		— TRUCK —	
AIR BRAKE MFR.: N.Y.A.B.		BOLSTER: BUCKEYE, PATT. NO. B-5197	
" " SCHEDULE: AB 10x12		BRAKE BEAM: #18 UNIT TYPE BB-126	
BODY CENTER PLATE: 11 3/4" FORGED STL.		CENTER PLATE: INTEGRAL	
BODY SIDE BEARING: 4"x1/2" CARBON STL. PLT.		GENERAL ARRANGEMENT: A-15636	
CENTER SILL: 2, 18" 854.7# I BEAMS		JOURNAL: 5 1/2" x 10"	
" " COVER PLTS: 2, 19 1/2" x 7/16"		JOURNAL BOX: INTEGRAL	
" " AREA: 48.94 SQ. IN.		SIDE BEARINGS: INTEGRAL (IN BOLSTER)	
COUPLER: "E" 6 1/4" x 8" SLOTTED, BOT. OPER.		SIDE FRAME: BUCKEYE, PATT. NO. F-5137	
" " RELEASE RIG: "IMPERIAL" ROTARY		WITH WASTE RETAINER RIBS, A.A.R. IDENT# -	
DRAFT GEAR: MINER, A-22-XB		SPRINGS: AAR 1936 D-2 80.C.-81.C./TRUCK	
		SPRING TRAVEL: 1 5/8"	
		TYPE OF TRUCK: 50T. DOUBLE TRUSS	
		SPRING PLANKLESS, UNIT EQUIPPED	
		WHEELS: ONE WEAR WROUGHT STL. 33" 4	
			CARS: - 99390 to 99399
			D. T. & I
			MOTIVE POWER DEPT. 5-25-49
		1/55	11-57
		FSM	2/65



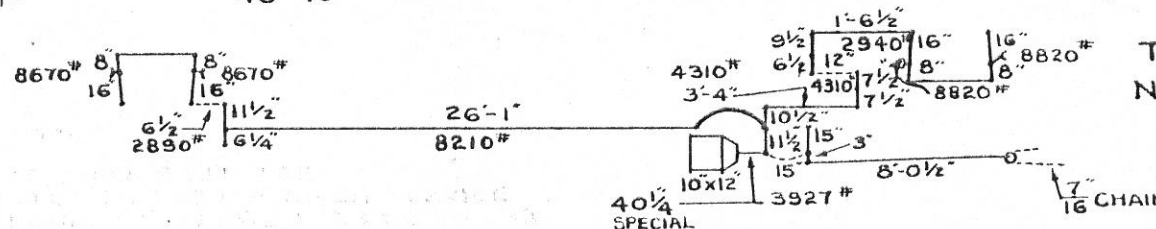
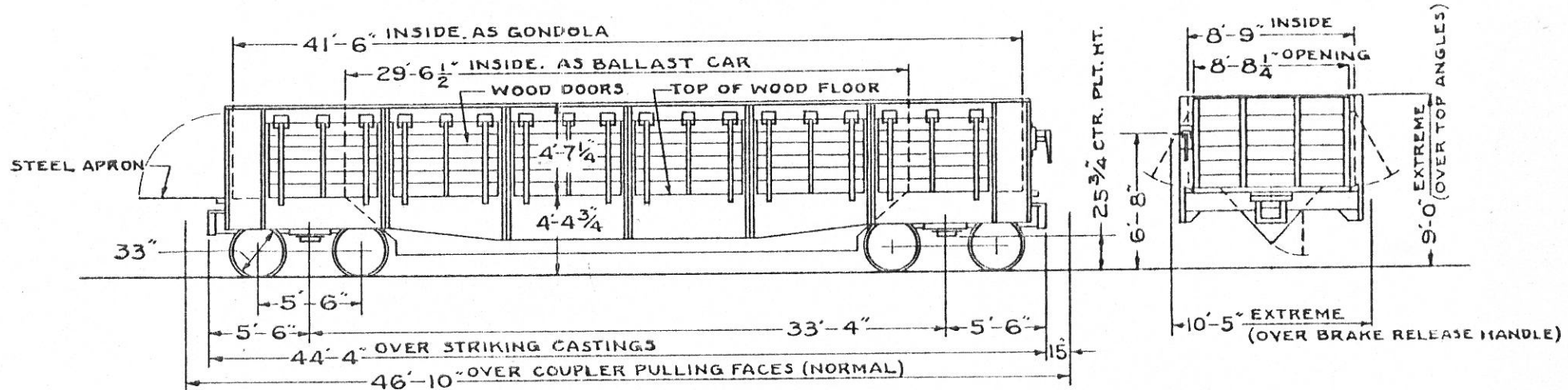
BUILDER: INDUSTRIAL BROWNHOIST CORP.	FLOODLIGHTS: STURDILITE 120-500	= WITHOUT OUTRIGGERS IN POSITION =	
YEAR BUILT: 1926	250 WATT, 120VOLT A.C. (THREE)	- MAIN HOIST -	- AUXILIARY HOIST -
BUILDERS REF.: SERIAL NO. 4491 (TYPE Z)	SHUTTERS: KYSOR M-517-F (MANUAL)	80,000 LBS @ 17'-6" R.	56,000 LBS @ 24'-0" R.
REBUILT & REPOWERED: 1967-1968	TORQUE CONVERTER: TWIN DISC MODEL	61,000 LBS @ 21'-0" R.	40,000 LBS @ 30'-0" R.
MANITOWOC EQUIPMENT WORKS	F-10029-TC-1, SPEC NO. 93688	47,000 LBS @ 25'-0" R.	31,000 LBS @ 35'-0" R.
WEIGHT: 360,850 LBS.	SERIAL NO. 229664	39,000 LBS @ 28'-0" R.	28,000 LBS @ 38'-0" R.
AIR COMPRESSOR: GARDNER-DENVER "V" TYPE	TORQUE 470 L FT. LBS.	35,000 LBS @ 30'-0" R.	26,000 LBS @ 40'-0" R.
2 STAGE, ADRA100 6 1/4" x 3 1/2" DIAM x 4" STROKE	VOLTAGE REGULATOR: ELECTRIC REGULATOR		24,000 LBS @ 42'-0" R.
200 PSI MAX. DISCHARGE PRESSURE, 61.8 C.F.M.	CO. "REGOHM" 12308-A	MIN. RADIUS CURVE: SELF-PROPELLING - 470	
@ 870 RPM. SERIAL NO. 554331		(125 FT. RADIUS)	
(COMP. SET TO CUT OUT @ 110 P.S.I.)	- LIFTING CAPACITIES -		
ALTERNATOR: GENERAL ELECTRIC 5ASB49YB5	= ALL OUTRIGGERS IN POSITION =		
3 K.V.A. - 1 WINDING 115 VOLT - 8.7 AMP A.C.	- MAIN HOIST -	- AUXILIARY HOIST -	- TRUCK -
1 WINDING 37.5 VOLT - 26.6 AMP A.C.	400,000 LBS @ 17'-6" R.	120,000 LBS @ 24'-0" R.	6 WHEEL TYPE 6 1/2" x 12" FRICTION BEARING
RECTIFIED TO 32 VOLT D.C.	300,000 LBS @ 21'-0" R.	100,000 LBS @ 40'-0" R.	JOURNALS.
BATTERY: EXIDE DL-7 HYCAP 32 VOLT	230,000 LBS @ 25'-0" R.		
CAB HEATER: KYSOR M-1565 - 24 VOLT -	180,000 LBS @ 28'-0" R.		
DIESEL ENGINE: DETROIT DIESEL DIV. - GEN. MOTORS	150,000 LBS @ 30'-0" R.		
SERIES 5V-71 8 CYLINDER "V" TYPE MODEL	= END OUTRIGGERS IN POSITION ONLY =		
7083-7200 SERIAL NO. 64097	- MAIN HOIST -	- AUXILIARY HOIST -	WRECKING DERRICK NO 99402
CYLINDERS 4 1/4" x 5" 17:1 COMP. RATIO 567.5 cu.in.	200,000 LBS @ 17'-6" R.	100,000 LBS @ 24'-0" R.	D.T. & I.
TOTAL DISPLACEMENT	150,000 LBS @ 21'-0" R.	100,000 LBS @ 32'-0" R.	MECHANICAL ENGINEERING DEPT. 1-30-70
DIESEL ENGINE HEATER: MANITOWOC DESIGN	125,000 LBS @ 25'-0" R.	90,000 LBS @ 35'-0" R.	- REVISIONS -
LP GAS FIRED - HEATER: CRESENT WATER	107,000 LBS @ 28'-0" R.	80,000 LBS @ 40'-0" R.	
HEATER MODEL 30-MB - 20,000 BTU INPUT	100,000 LBS @ 30'-0" R.		
DIESEL ENGINE MUFFLER: DONALDSON MFM09-0009			



— GENERAL —		
BUILDER: SOUTHWARK FOUNDRY & MACHINE CO.		
YEAR BUILT: 1925		
BUILDERS REF:		
CAR CLASS: NONE		
NO. BUILT: 1		
WT.: 82,000 LBS.		
— BODY —		
BODY: CAST BY BUILDER		
COUPLER: 6"x8" ARA STD. "D"		
COUPLER RELEASE RIG.: CARMER		
DRAFT GEAR: WESTINGHOUSE D-3		
" ATTACHMENT: CAST		
GEN. DWG. NO.: S.F. & M. CO. 8139/A; D.T. #1-X-1630		
HAND BRAKE:		
AIR BRAKE: NONE (HAS THRU TRAIN LINE)		
— RUNNING GEAR —		
BRAKE BEAM: ARA #2 PLUS		
JOURNAL: TIMKEN 5 1/2" X 10" QUAD ROLLER BEARING		
" BOX: TIMKEN K-50038		
SPRINGS: SEMIELLIPITICAL-CARBON STL. P. 2515		
WHEELS: 36" WROT STEEL		
AXLE: TIMKEN K-49023 DWG. Y-2525		
		99425 SCALE TEST CAR
		D.T. #1.
		MOTIVE POWER DEPT. 3-21-56
		REVISIONS
		1/61

CONVERTIBLE GONDOLA BALLAST

55-TON



THESE CARS WERE ORIGINALLY NUMBERED 6451-6470.

CARS 99673 AND 99678 HAVE SIDES REMOVED AND RAIL APPLIED ON DECK FOR TRANSPORTATION OF M.O.F.W TRACK MACHINERY. SEE DWG. V-5865

BRAKE DIAGRAM

GENERAL
 BUILDER:- MT. VERNON CAR MFG. CO.
 YEAR BUILT:- 1925
 BUILDER'S REF.- ORDER NO. 6208.
 R.R. SPEC. NO.- NONE.
 NO. BUILT:- 20
 CAPY:- 1672 CU. FT. AS GONDOLA.
 AVERAGE LT. WT. - 58300 LBS.
 " LOAD LIMIT:- 118,700 LBS.

BODY
 AIR BRAKE MFG.- N.Y.A.B. CO.
 " SCHEDULE:- AB
 BODY CTR. PLT.- 11 3/4" FORGED STEEL.
 " SIDE BRG.- CAST STEEL.
 CENTER SILL:- BUILT-UP.
 " COVER PLT.- NONE.
 " AREA:-
 COUPLER:- "D" 6x8" SLOTTED. TOP OR.
 " RELEASE RIG:- "CARMER"
 DOORS- END:- NONE.
 " - HOPPER:- BUILDER'S STEEL.
 " - SIDE:- " WOOD.

DOOR MECHANISM- END:- NONE.
 " " - HOPPER:- "ENTERPRISE"
 " " - SIDE:- "ENTERPRISE"
 DRAFT GEAR:- "NATIONAL" M-17. 2 3/4" TRAVEL.
 " ATTACHMENT:- "FARLOW" 2-KEY.
 ENDS:- WOOD. REMOVABLE.
 END SILL:- 10" 15.3 LBS. L

FLOORING:- 2" & 2 3/8"
 GENERAL DRAWING:- 537 E 8504-B
 HAND BRAKE:- "MINER IDEAL" STAFF.
 SIDE SILL:- BUILT-UP.
 " BRG. CENTERS:- 4'-2"

TRUCK
 BOLSTER:- FORD MOTOR CO. PATT. NO. B-570.
 BRAKE BEAM:- "AJAX" NO. 2+ OR A.A.R. NO. 15.
 " SAFETY:- 2"x 2"x 1/4" L
 CENTER PLT.- INTEGRAL.
 GENERAL DRAWING:- 565 D 8497-A
 JOURNAL:- 5 1/2" x 10"
 " BOX:- INTEGRAL.
 R.R. SPEC. NO.- NONE.

SIDE BEARING:- "STUCKI"
 " FRAME:- A. S. F. PATT. NO. 7273
 SPRINGS:- A.A.R. "D"
 TYPE OF TRUCK:- PRESSED SPRING PLANK.
 WHEELS:- 750 LB. CAST IRON.
 WEIGHT OF BOLSTER:-
 " SIDE FRAME:- 630 LBS.
 " ONE TRUCK:-

CARS:- 99662 to 99680

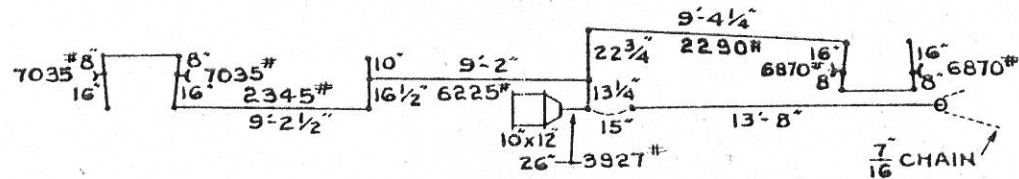
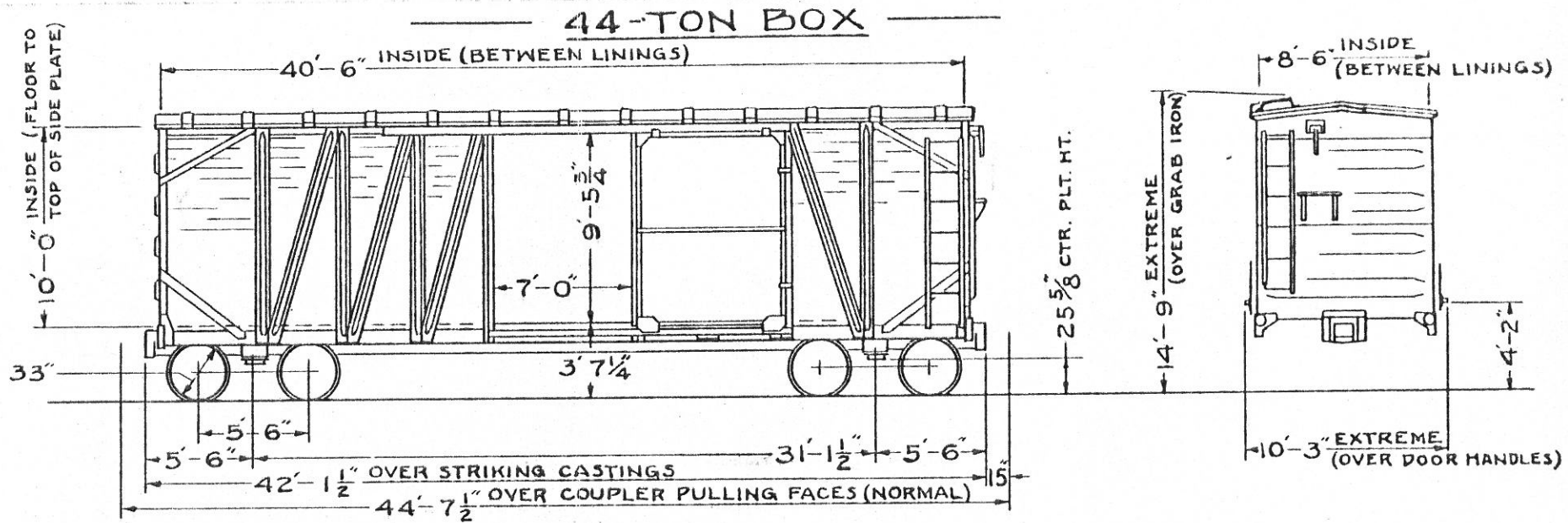
D. T. & I.

MOTIVE POWER DEPT.

9-1-42

12-57
 FSM 1/61 2/65 1/66

REVISION



BRAKE DIAGRAM

GENERAL
 BUILT BY:- STANDARD TANK CAR CO.
 YEAR BUILT:- 1923.
 BUILDER'S REF:- S.O. No. 1155
 R.R. SPEC. NO.- NONE
 A.A.R. CLASS:- **MWM or MWX**
 NO. BUILT:- 1000
 CAPY.- 3443 CU. FT.
 AVERAGE LT. WT.- 45100 LBS.
 " LOAD LIMIT:- 90,900 LBS.
 " WT. ALL WOOD MEMBERS - 14,640 LBS.

BODY
 AIR BRAKE MFG.- N.Y.A.B. CO.
 " SCHEDULE:- AB
 BODY CTR. PLT.- 11 3/4" FORGED STEEL.
 " SIDE BRG.- HARDENED STEEL PLATE.
 CENTER SILL:- 12" SHIP CHANNEL 34.5 LBS.
 " COVER PLT.- 1/4" x 20 3/4"
 " AREA:- 26.2 SQ. IN.
 COUPLER:- "D" 6"x8" SLOTTED. TOP OP.
 " RELEASE RIG:- "CARMER"
 DOOR:- WOOD
 " FIXTURES:- "CAMEL" NO. 50.

DRAFT GEAR:- "MINER" A-18-3. 2 1/2" TRAVEL.
 " ATTACHMENT:- "FARLOW" 2-KEY.
 ENDS:- "HUTCHINS."
 END SILL:- 6"x4"x3/8"L
 FLOORING:- 2 1/4" T&G.
 GENERAL DRAWING:- 14012-A. D.T.&I. DWG. V-2456
 HAND BRAKE:- MINER "IDEAL" STAFF.
 LINING-END:- 1 1/2" T&G.
 " SIDE:- NONE.
 ROOF:- "HUTCHINS"
 SIDE SILL:- 9" 17.5 LBS. L1
 " BRG. CENTERS:- 4'-2"
 SHEATHING:- 1 1/2" & 1 1/4" T&G.
 SUPERSTRUCTURE:- STEEL.
 WT. OF ONE DOOR WITH FIXTURES ON DOOR:-

TRUCK
 BOLSTER:- A.S.F. PATT. NO. 7250
 BRAKE BEAM:- NO. 2+ "AJAX" OR A.A.R. NO. 15.
 " SAFETY:- SEE NOTE NO. 1.
 CENTER PLATE:- INTEGRAL.
 GENERAL DRAWING:- 12073.
 JOURNAL:- 5" x 9"

JOURNAL BOX:- INTEGRAL.
 R.R. SPEC. NO.- NONE.
 SIDE BEARING:- "STUCKI" MALL. IRON.
 " FRAME:- A.S.F. PATT. NO. 7323.
 SPRINGS:- DRAWING 8130. COIL.
 TYPE OF TRUCK:- PRESSED SPRING PLANK.
 WHEELS:- 700 LB. CAST IRON.
 WEIGHT OF BOLSTER:- 725 LBS.
 " SIDE FRAME:- 575 LBS.
 " ONE TRUCK:-

NOTE NO. 1:- 2 1/2" x 2 1/2" x 3/8" L & "ECONOMY" SAFETY GUARD.

CARS: 99685 & 99713 #
 99728

D.T.&I.

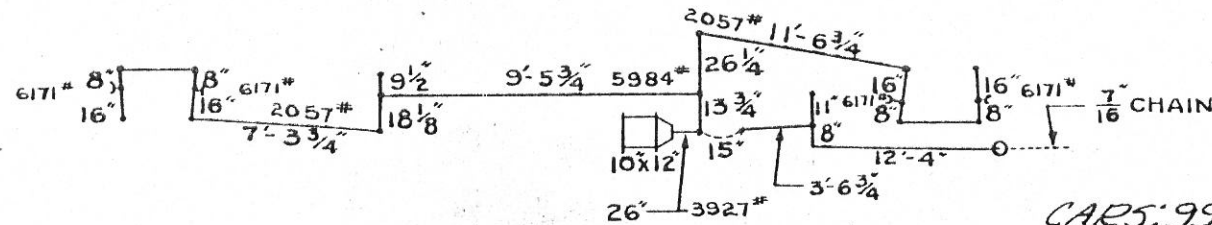
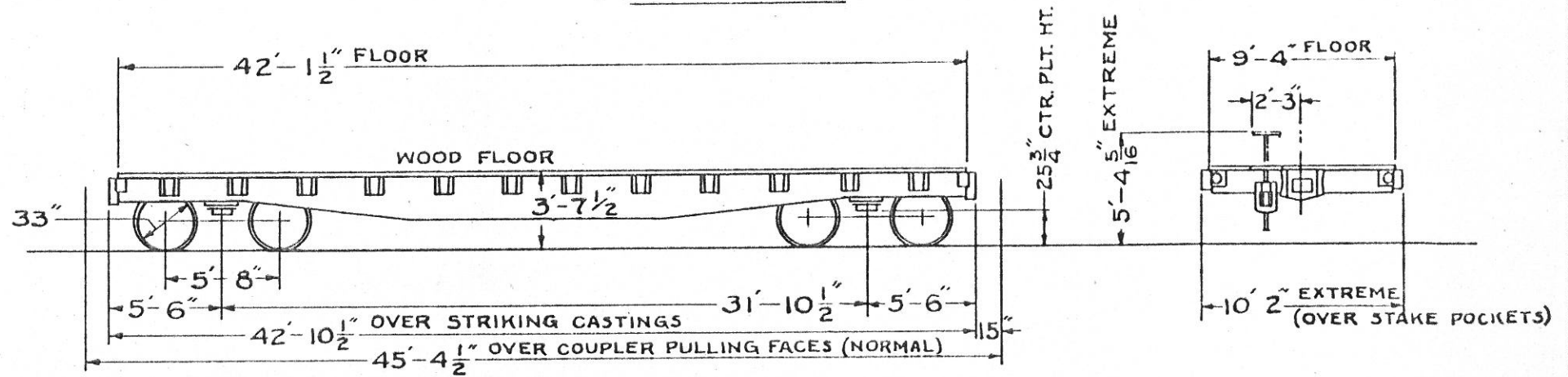
MOTIVE POWER DEPT.

9-1-42

REVISION

11-5T	12/60	5-62 2/					
FSM	RN	FAM	65				

— 77-TON FLAT —



BRAKE DIAGRAM

CARS: 99710-99712 - 33" WHEEL CARS

CARS: 99732 & 99733 TRACK PANEL CARS

CAR: 99751 LOCO STORAGE

GENERAL
 BUILDER:- STANDARD STEEL CAR CO.
 YEAR BUILT :- 1925
 BUILDER'S REF.- O.O. E-9910
 R.R. SPEC. NO.- NONE.
 A.A.R. CLASS :- MWIF
 NO. BUILT :- 50
 AVERAGE LT. WT. - 40,600 LBS.
 " LOAD LIMIT :- 179,400 LBS.

END SILL :- 12" 20.7 LBS. L.I.

FLOORING :- 2 3/4 T & G.
 GENERAL DRAWING :- 49932-A, DT&I V-2398
 HAND BRAKE :- "URECO" DROP SHAFT.
 SIDE SILL :- FISH BELLY.
 SIDE BEARING CENTERS :- 4'-2"

NOTE NO. 1 :-
 MULTIPLE WEAR WROT STEEL.

NOTE NO. 2 :- 2 1/2" x 2 1/2" x 1/4" L & "ECONOMY" SAFETY GUARD.

BODY
 AIR BRAKE MFG. - N.Y.A.B. Co.
 " SCHEDULE :- AB
 BODY CENTER PLATE :- 11 3/4" FORGED STEEL.
 " SIDE BEARING :- HARDENED STEEL PLT.
 CENTER SILL :- BUILT-UP.
 " COVER PLT. - 1/4" x 24"
 " AREA :- (FISH BELLY).
 COUPLER :- "E"-6 1/4" x 8" SLOTTED. TOP OP.
 " RELEASE RIG :- "CARMER"
 DRAFT GEAR :- "NATIONAL" M-17. 2 3/4" TRAVEL.
 " ATTACHMENT :- "FARLOW" 2-KEY.

TRUCK
 BOLSTER :- B.S.C. PATT. NO. B-707.
 BRAKE BEAM :- A.A.R. NO. 3.
 " SAFETY :- SEE NOTE NO. 2.
 CENTER PLATE :- CAST INTEGRAL
 GENERAL DRAWING :- 50026-A DT&I Y-2390
 JOURNAL :- 6" x 11" | Box :- INTEGRAL.
 SIDE BEARING :- "STUCKI" MALL IRON.
 " FRAME :- A.S.F. PATT. NO. 7275.
 SPRINGS :- DRAWING 47938. COIL.
 TYPE OF TRUCK :- PRESSED SPRING PLANK.
 WHEELS :- SEE NOTE NO. 1.
 WEIGHT OF BOLSTER :- 1013 LBS.
 " SIDE FRAME :- 795 LBS.
 " ONE TRUCK :-

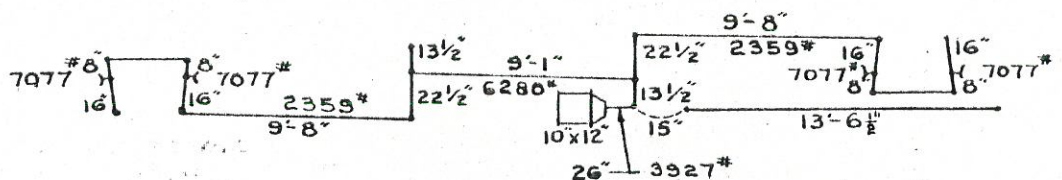
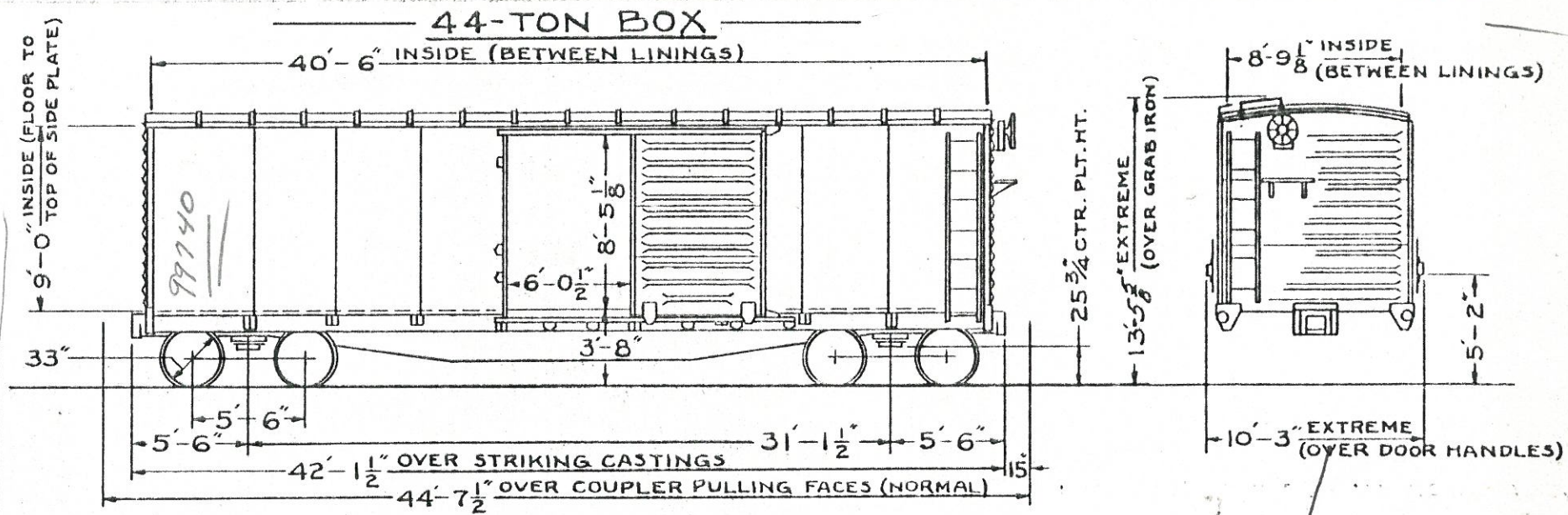
CARS: 99710-99712, 99732, 99733 & 99751

D.T. & I.
 MOTIVE POWER DEPT. 9-1-42

REVISION			
10/57	1/65	5/70	8/78
PH	FL		

L-313-241-5110 - Management
 Jan - 1-456-477 P/Gon
 + Cheamton

L-313-782-1775 → Murphy = \$50.00 GT-104910
 L-313-241-5110
 Jerry Fisher



BRAKE DIAGRAM

GENERAL
 BUILT BY:- ACF
 YEAR BUILT:- 1919
 BUILDER'S REF.-8512
 R.R. SPEC. NO.- NONE.
 A.A.R. CLASS:- MWM
 NO. BUILT:- 200 (FOR DT#1)
 CAPY.- 3193 CU. FT.
 AVERAGE LT.WT.- 47,000 LBS.
 " LOAD LIMIT:- 94,000 LBS.

BODY
 AIR BRAKE MFG.- N.Y.A.B. CO.
 " SCHEDULE:- AB
 BODY CTR. PLT.- 1 1/4" FORGED STEEL.
 " SIDE BRG.- 3/8" HARDENED STEEL PLATE.
 CENTER SILL:- BUILT-UP.
 " COVER PLT.- 1/4" x 20 1/2"
 " AREA:- (FISH BELLY)
 COUPLER:- "E" 6 1/4" x 8" SLOTTED. TOP OPERATED
 " RELEASE RIG:- ROTARY & CARMER
 DOOR:- "YOUNGSTOWN"
 " FIXTURES:- "CAMEL" ROLLER LIFT

DRAFT GEAR
 " ATTACHMENT:- C.S. YOKE. A.C.&F.
 ENDS:- "MURPHY"
 END SILL:- 6" x 4" x 3/8" L

FLOORING:- 2 1/4" T&G.
 GENERAL DRAWING:- DT&I V-2218
 HAND BRAKE:- "AJAX"
 LINING- END:- 1 1/2"
 " SIDE:- 13/16" & 1 1/4" T&G.
 ROOF:- "CAMBRE" ALL STEEL.
 SIDE SILL:-
 " BRG. CENTERS:- 4'-2"
 SHEATHING:- RIVETED STEEL.
 SUPERSTRUCTURE:- STEEL. 3" Z SIDE POSTS.
 WT. OF ONE DOOR WITH FIXTURES ON DOOR:- 355 LBS.

TRUCK
 BOLSTER:- A.C. & F. PATT. NO. U.S.S. 1412.
 BRAKE BEAM:- NO. 2 "AJAX" OR A.A.R. NO. 15.
 " SAFETY:- "CRECO" 3RD. POINT.
 CENTER PLATE:- INTEGRAL
 GENERAL DRAWING:- 4562735
 JOURNAL:- 5" x 9"

JOURNAL BOX
 R.R. SPEC. NO.- NONE.
 SIDE BEARING:- "WINE"
 " FRAME:- SEE NOTE NO. 2.
 SPRINGS:- DRAWING 2562779-A. COIL.
 TYPE OF TRUCK:- 13" 32LB. LI SPRING PLANK.
 WHEELS:- 700 LB. CAST IRON-
 WEIGHT OF BOLSTER:-
 " " A.C. & F. SIDE FRAME:-
 " " A.S.F. " 430 LBS.
 " " ONE TRUCK:- 7200 LBS.
 NOTE NO. 2:- A.C. & F. PATT. NO. U.S.S. 1409 &
 A.S.F. PATT. NO. 2104B.
 SUPERSEDED BY BUCKEYE PATT.# F-4002

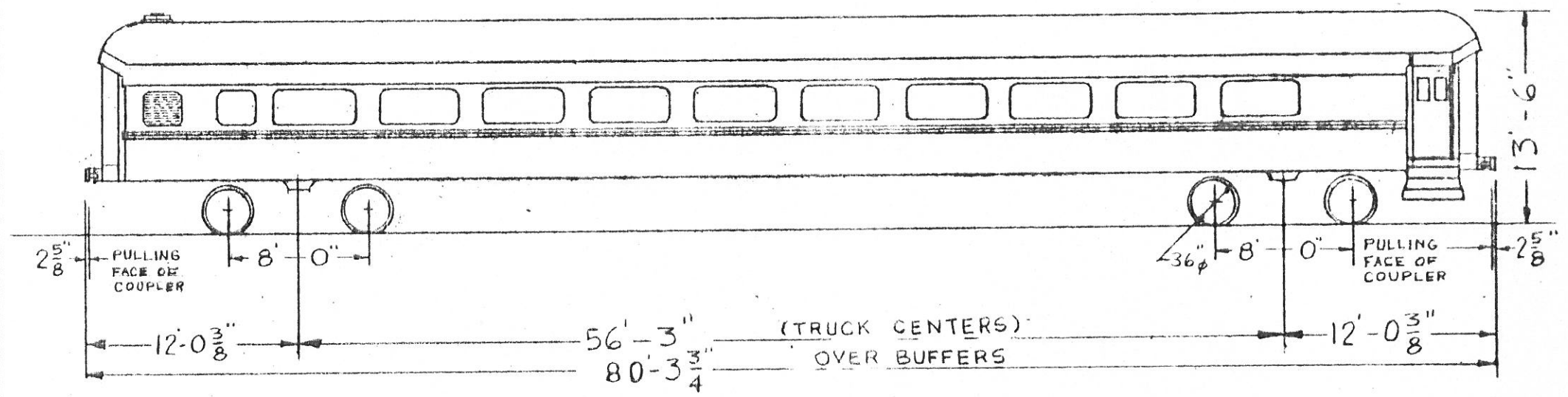
CARS:- 99714, 99731, 99735, 99742, 99748, & 99750

D.T. & I.

MOTIVE POWER DEPT. 9-1-42

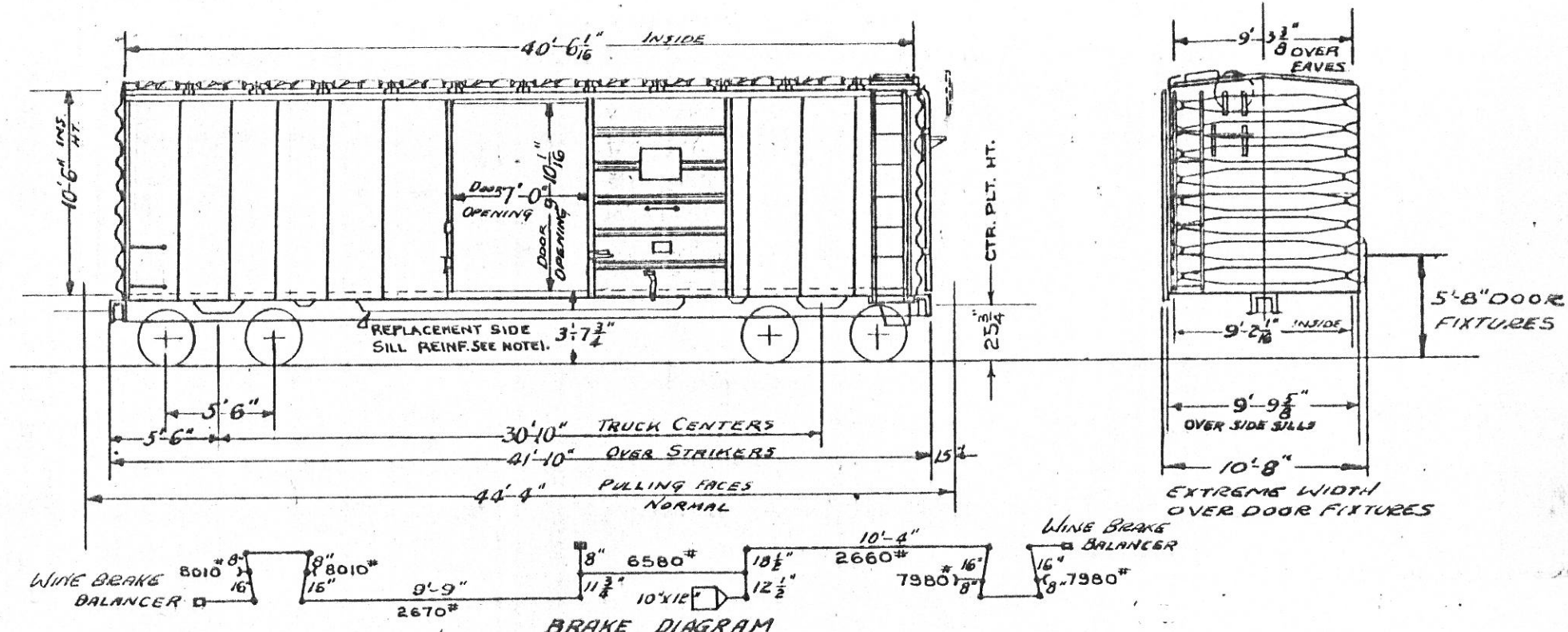
REVISION			
A	11/57	12/60	1/3/74
51947	FSH	RN	65/74

Sent to
 Murphy
 Springfield
 Feb 1942



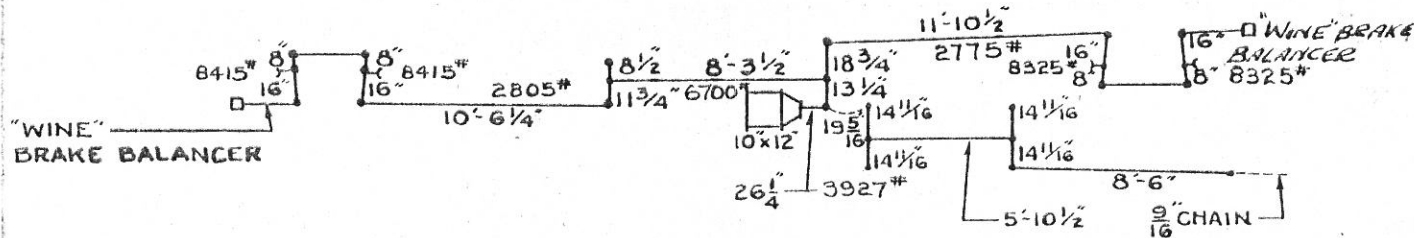
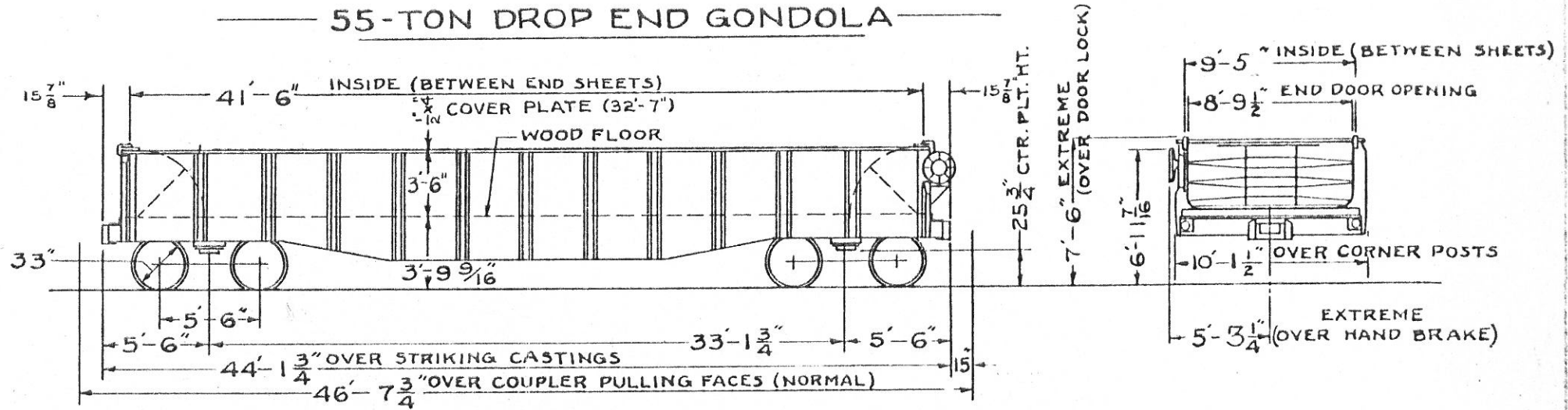
<p align="center">~ GENERAL ~</p>	<p>HEATING SYSTEM: CRANE "SUNNY DAY" MODEL</p>	<p align="center">-- TRUCKS --</p>										
<p>BUILDER: PENNSYLVANIA RAILROAD</p>	<p>G-W-102 PA(E) 75000 BTU RATING</p>	<p>BOLSTER: PRR PATT. S.C.V. 9258 (D.T. & I. DWG. W-2564)</p>										
<p>DATE REBUILT: 1966 JACKSON SHOPS</p>	<p>PROPANE GAS FUELED</p>	<p>BRAKE BEAM: INSIDE - PRR MARK 123 (D.T. & I. DWG. Y-4349)</p>										
<p>REF. NO. PRR. CAR NO. 3917 CLASS P-70</p>	<p>1/4" DIAM. 4 1/4" x 4 1/4" ALUMINUM FIN TUBE</p>	<p>OUTSIDE - PRR MARK 121A (D.T. & I. DWG. Y-4381)</p>										
	<p>RADIATORS HEATING SYSTEM CAPY 18.7 GAL.</p>	<p>CENTER PLATE: 12" PRR PATTERN F-184 (D.T. & I. DWG. X-5807)</p>										
	<p>POWER SUPPLY: 115 VOLT A.C. 10K.W.</p>	<p>JOURNALS: 5 1/2" x 10" HYATT ROLLER BEARING</p>										
	<p>FAIRBANKS-MORSE MODEL 6510000 CRAC</p>	<p>SIDE BEARINGS: OUT BOARD FRICTION TYPE</p>										
	<p>SINGLE PHASE 3 WIRE 60 CYCLE</p>	<p>SPRINGS: ELLIPTIC-COIL</p>										
	<p>PROPANE GAS CARBURATION</p>	<p>TRUCK FRAME: PRR PATT. S.C.V. 9253 (D.T. & I. DWG. V-2565)</p>										
<p align="center">~ BODY ~</p>	<p>REFRIGERATOR: 3E MODEL TB-16 SB</p>	<p>TYPE OF TRUCK: PRR CLASS 2D-P5</p>										
<p>AIR BRAKES: WESTINGHOUSE</p>	<p>LEFT HAND DOOR - ELECTRIC</p>	<p>WHEELS: 36" MULTIPLE WEAR WROUGHT STEEL - A-36</p>										
<p>AIR BRAKE CYLINDER 16" x 12"</p>	<p>SLEEPING ACCOMODATION: 10 PERSON</p>											
<p>AIR BRAKE SCHEDULE: U-12 BC</p>	<p>SUPPLIES: PROPANE GAS - 330 GAL (12,000 CU FT)</p>											
<p>BLOWER FAN MOTOR: GENERAL ELECTRIC</p>	<p>WATER - 385 GAL</p>											
<p>5KC49QG349 11R114OR.P.M.</p>	<p>WATER SYSTEM: PUMP-BURKS NO. A3HJS</p>	<p align="center">WORK EQUIPMENT CAR: 99716</p>										
<p>115 VOLT SINGLE PHASE</p>	<p>1/3 HP MOTOR 115 VOLT A.C.</p>	<p align="center">D.T. & I.</p>										
<p>BUFFER DEVICE:</p>	<p>600 G.P.H. CAPY.</p>	<p align="center">MECH. ENG. DEPT. 12-2-69</p>										
<p>CEILING: 1/2" STEEL-1/2" MASONITE-LAMINATED</p>	<p>HEATER: REPUBLIC 30 GAL</p>	<p align="center">-- REVISIONS --</p>										
<p>CENTER SILL: 2 1/2" @ 45 8" P.T. SHIP CHANNEL</p>	<p>GLASS LINED PROPANE FUELED.</p>	<table border="1"> <tr> <td> </td> <td> </td> <td> </td> <td> </td> <td> </td> <td> </td> <td> </td> <td> </td> <td> </td> <td> </td> </tr> </table>										
<p>COUPLER: TIGHT LOCK PRR PATT. V-11251</p>	<p>SINKS - KITCHEN LYONCRAFT #2048</p>											
<p>COUPLER RELEASE RIGGING</p>	<p>SINKS - WASHROOM LYONCRAFT #4-1700</p>											
<p>DRAFT GEAR: WAUGH WM-6-DP</p>	<p>HOPPER-DUNER #506V2</p>											
<p>DRAFT GEAR ATTACHMENT: V-68 YOKE</p>												
<p>EXHAUST FAN: NUTONE #8010 250 C.F.M.</p>												
<p>FLOORING: TRANS CO NAILABLE STEEL</p>												
<p>HAND BRAKE:</p>												

55 TON BOX



GENERAL	BODY (CONT)	TRUCK (CONT)
BUILDER: A.C.F. - Chicago Plant	FLOORING: 1 3/4" T & G SEE NOTE 8	SPRINGS: - 5.9 - COIL-ELLIPTIC
YEAR BUILT: 1949	GENERAL DRAWING: 61-17093-E DT&I V-2455	TRUCK TYPE: "UNIT" SPRING-PLANKLESS
BUILDERS REF: 3338	HAND BRAKE UNIVERSAL WX 2000	WHEELS - ONE WEAR WROUGHT STEEL
R.R. SPEC. NO. 122	LINING: END- 2 3/32" & 1 1/2" T & G	33" DIAM.
A.A.R. CLASS MWM	SIDE 2 5/32" & 1 1/4" T & G	
NO. BUILT: - 100	ROOF: MURPHY-DIAGONAL PANEL	NOTE 1 CARS ORIG. EQUIPPED WITH 6 1/2 @ 10.7" BULB
CAPY: - 3901 CU. FT.	SIDE SILL: 6" x 3 1/2" x 5/16" ANGLE	REPLACED BY DT&I WITH 8" @ 21.4" x 27'-6" SHIP CHAIR
AVER. LT. WT. 46200; LD. LIMIT 180,800	" BEARING CENTERS 4'-2"	CENTERED BETWEEN BOLSTERS.
	SHEATHING: STEEL - WELDED	NOTE 2 FLOOR REPLACEMENT 2 1/4" T & G
	SUPERSTRUCTURE: - STEEL - WELDED	
TRUCK		
AIR BRAKES: NEW YORK AIR BRAKE CO.	BOLSTER: O.S.F. PATT. NO. 495T	
SCHEDULE: FB	BRAKE BEAM 125 46 E "CRECO"	
BODY CENTER PLATE: - DROP FORGED	CENTER PLATE - INTEGRAL	
CENTER SILL: A.A.R. Z-26; 2; 72.416 / FT.	GENERAL DRAWING - 31-17663	
" AREA: 213.50 IN.	JOURNAL: 5 1/2" x 10"	
COUPLER: - TYPE "E" 6 1/4" x 8" BOT. OPERATED	JOURNAL BOX - INTEGRAL	
" RELEASE RIGGING - IMPERIAL ROTARY	R.R. SPEC. NO. 119	
DOORS: - SUPERIOR CAR DOOR CO.	SIDE BEARING - STUCKI	
DRIVE GEAR: W.H. MINERA-22-XB	" FRAME: O.S.F. PATT. 8236	
COUPLER YOKES: C.S. VERT. NAT'L MAL.		
ENDS: A.C.F.		
END SILL: 6" x 3 1/2" x 5/16" ANGLE		
REVISIONS		
MOTIVE POWER DEPT 6-6-51		
CAR 5 99724		
D.T. & I.		
3/57	SEP 57 R.I.	57-52 1/65 FAM

55-TON DROP END GONDOLA



BRAKE DIAGRAM

GENERAL
 BUILDER:- GREENVILLE STEEL CAR CO.
 YEAR BUILT:- 1941
 BUILDER'S REF:- 00-312
 R.R. SPEC. NO.- 107
 A.A.R. CLASS:-
 NO. BUILT:- 300
 CAPY.- 1368 CU. FT.
 AVERAGE LT. WT.- 51900 LBS.
 " LOAD LIMIT:- 125,100 LBS.

BODY
 AIR BRAKE MFG.- N.Y.A.B. Co.
 " SCHEDULE:- AB.
 BODY CTR. PLT:- 11 3/4" FORGED STEEL.
 " SIDE BRG.- 3/8" HARDENED STEEL PLT.
 CENTER SILL:- C.B. Z-26. 41.2 LBS.
 " COVER PLT.- NONE.
 " AREA:- 21.30 SQ. IN.
 COUPLER:- "E" 6 1/4" x 8" SLOTTED, BOTTOM OP.
 " RELEASE RIG:- "IMPERIAL" ROTARY.
 DOOR:- "DREADNAUGHT" DROP END.
 " LOCK:- "WINE"

DRAFT GEAR:- WESTINGHOUSE NY-11-E
 " " ATTACHMENT:- C.S. YOKE. N.M. & S.C.
 ENDS:- SEE "DOOR"
 END SILL:- 12" 20.7 LBS. LI
FLOORING:- 3" x 4 1/16" FACE, SHIP LAP.
 GENERAL DRAWING:- 16450. DT&I V-2447
 HAND BRAKE:- "AJAX"
 SIDE SILL:- FISH BELLY.
 " BRG. CENTERS:- 4'-2"

TRUCK
 BOLSTER:- O.S.F. PATT. NO. 4957.
 BRAKE BEAM:- NO. 15 "BUFFALO"
 " SAFETY:- "CRECO" FOUR POINT.
 CENTER PLT.- INTEGRAL.
 GENERAL DRAWING:- O.S.F. 204-LN-133.
 JOURNAL:- 5 1/2" x 10"
 " BOX:- INTEGRAL.
 R.R. SPEC. NO.- 108
 SIDE BEARING:- "STUCKI" SPRING STEEL.
 " FRAME:- O.S.F. PATT. NO. 4417.
 SPRINGS:- S.S.W. DRAWING 00-1016. COIL SNUBBER
 A.S.F. " 56369-A.

TYPE OF TRUCK:- SPRING PLANKLESS, WITH BRACKET FOR BRAKE BEAM SAFETY CAST INTEGRAL AND "MOBIL" RETAINER.
 WHEELS:- ONE WEAR WROT STEEL.
 WEIGHT OF BOLSTER:- 900 LBS.
 " " SIDE FRAME:- 635 LBS.
 " " ONE TRUCK:- 7320 LBS.

CARS: 99734

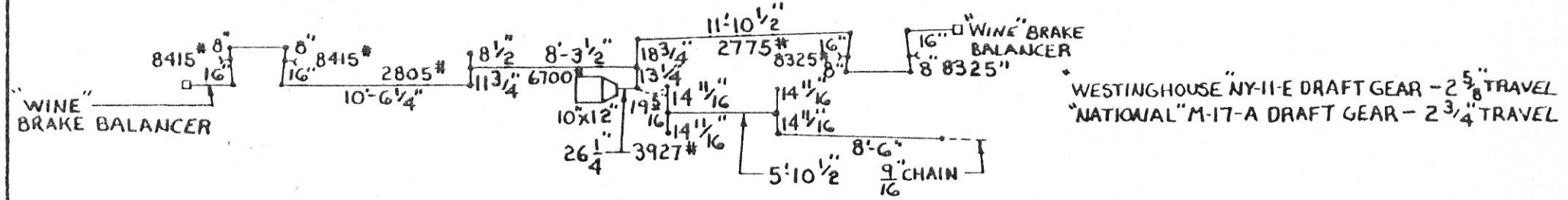
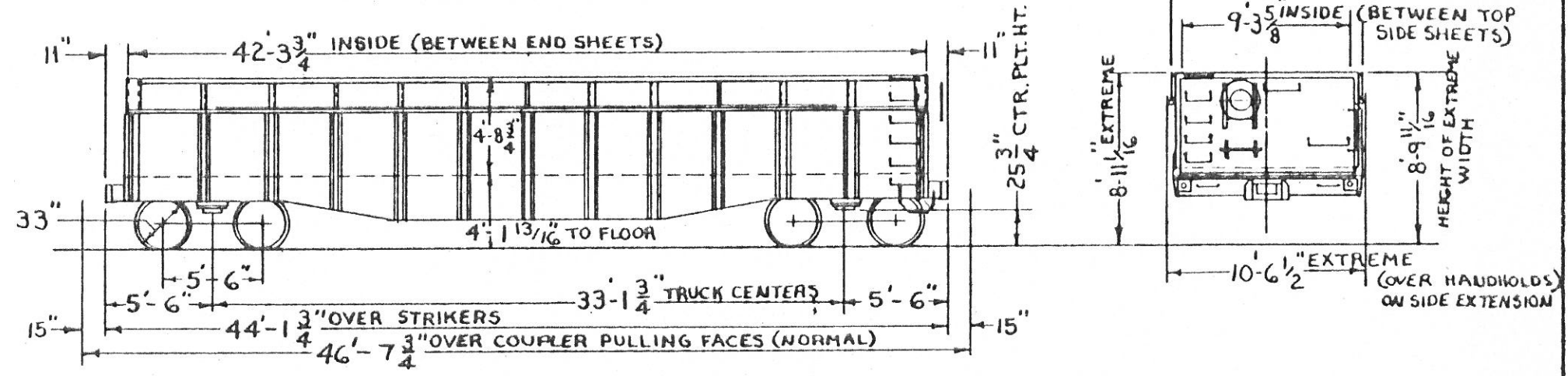
D.T.&I.

MOTIVE POWER DEPT.

9-1-42

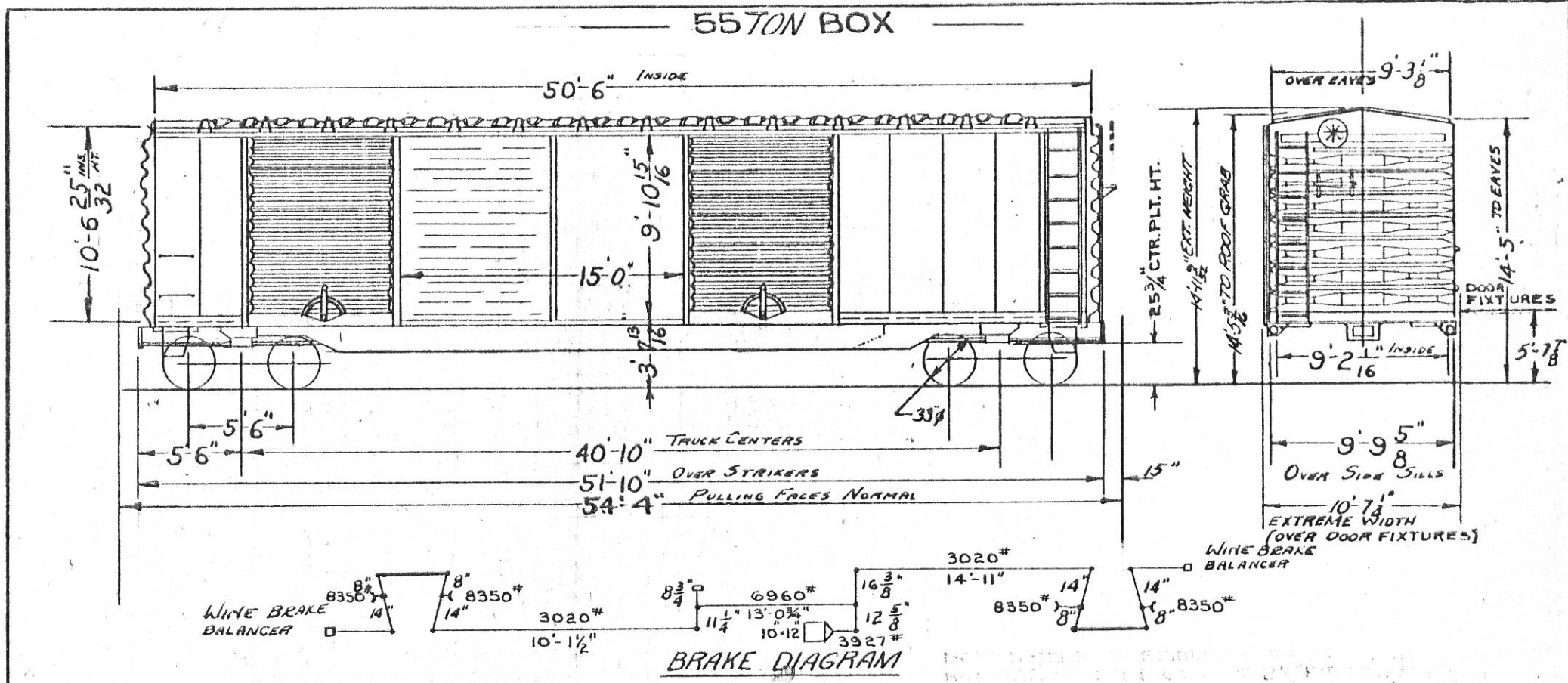
REVISION
 11/53 9/57 RN FAM 1 1/65 1/66 3/72 3/75
 12/60 5/62

— 55-TON GONDOLA —

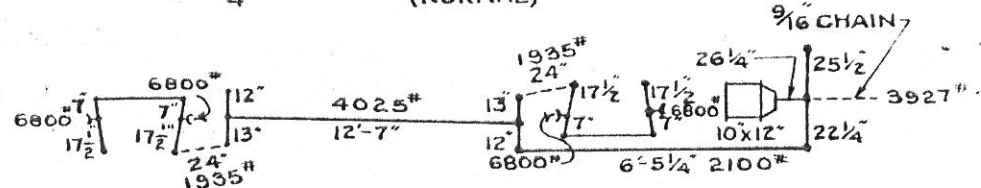
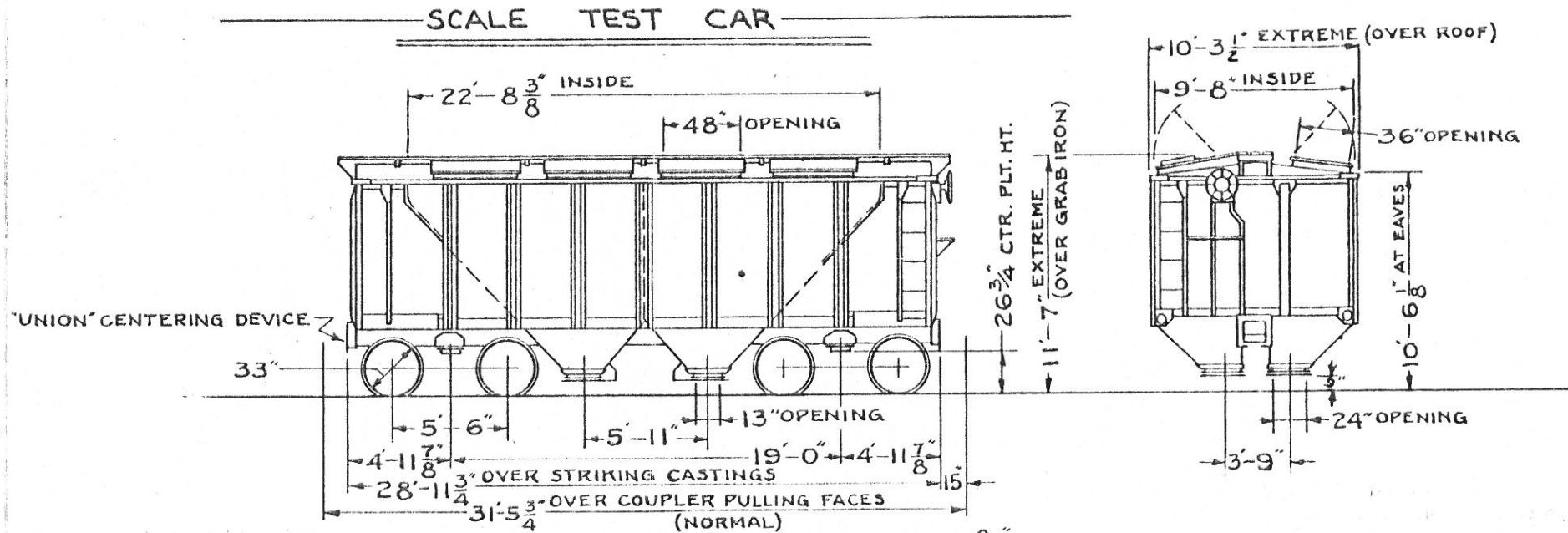


BRAKE DIAGRAM

<p>— GENERAL —</p> <p>BUILDER: GREENVILLE STEEL CAR CO. YEAR BUILT: 1941 REWORKED-1971 BUILDER'S REF. - 00-312</p> <p>A.A.R. CLASS: MWM NO. BUILT: ORIGINALLY 600, 7000-7299 CAPY: 1842 CU. FT. AVERAGE LT. WT.: 66,600 LBS. " LOAD LIMIT: 110,400 LBS.</p>		<p>DRAFT GEAR ATTACHMENT: C.S. YOKE, B-Y40</p> <p>ENDS: END SILL: 12" @ 20.7 #/FT. CHANNEL FLOORING: 1/4" PLATE GENERAL DWG. DT&I V-8757 HAND BRAKE: "AJAX" SIDE SILL: FISH BELLY</p>	<p>WHEELS: ONE WEAR WROT STEEL WEIGHT OF BOLSTER: 900 LBS. " " SIDE FRAME: 635 LBS. " " ONE TRUCK: 7320 LBS.</p>
<p>— BODY —</p> <p>AIR BRAKE MFG. - NYAB. CO. " " SCHEDULE - AB 1012 BODY CTR. PLATE: 1 1/4" FORGED STEEL " SIDE BRG.: 3/8" HARDENED STEEL PLT. CENTER SILL: 7-26 @ 41.2 #/FT. " " AREA: 24.24 SQ. IN. COUPLER: "E" 6 1/4" X 8" SLOTTED, BOTTOM OP. " RELEASE RIGGING: "IMPERIAL" ROTARY STANDARD DWG. 10-1571-BDT&I DWG. Y-10542 DRAFT GEAR: SEE NOTE 1</p>		<p>— TRUCK —</p> <p>BOLSTER: O.S.F. PATT. NO. 4957 (DT&I DWG. W-2828) BRAKE BEAM: NO. 18 " " SAFETY: "CRECO" FOUR POINT. (DT&I DWG. X-2981) GENERAL DWG. O.S.F. 204-LN-133 JOURNAL: 5 1/2" X 10" SIDE BEARING: "STUCKI" 656-C (DWG. Y-1470) SIDE FRAME: O.S.F. PATT. NO. 4417 (DT&I DWG. W-10416) SPRINGS: A.A.R. P-2 15/8" TRAVEL BOUVER & BANNER COILS / TRUCK TYPE OF TRUCK: SPRING PLAINLESS WITH BRACKET FOR BRAKE BEAM SAFETY CAST INTEGRAL AND "MOBIL" RETAINER</p>	<p>NOTE NO. 1: WESTINGHOUSE "NY-11-E" ON 97103, "NATIONAL" M-17-A ON 97216 AND 97260.</p> <p>CARS - 99755; 99756; 99757</p> <p>D.T. & I. MECHANICAL ENGINEERING DEPT. 9-23-71</p>
<p>— REVISION —</p>			<p>9/5</p>



GENERAL	BODY (CON'T)	TRUCK (CON'T)
BUILDER: GENERAL AMERICAN TRANS. CO.	DRAFT GEAR ATTACHMENT: C.S. YOKE NAT'L MALL.	JOURNAL BOX: INTEGRAL
YEAR BUILT: 1951	ENDS: "DREADNAUGHT" STAINLESS STEEL (DT&I V-146)	R.R. SPEC. No. 119
BUILDERS REF: 8022	END SILL: 6" x 3 1/2" x 1/16" ANGLE	SIDE BEARING: ROLLER TYPE - STUCKI
R.R. SPEC. No. 100-A	FLOORING: NAILABLE STEEL	SIDE FRAME: A.A.R. CODE F 5A-02AB-1A
A.A.R. CLASS: MWH	GENERAL DRAWING: GATX: 5-2883 D.T.&I. V-1323	BUCKEYE PAT. NO. F-5180 (DT&I. DNG. W-1462)
N. BUILT: 300	HAND BRAKE: AJAX CONSOLIDATED	A.A.R. IDENTIFICATION NO.
CAPY: 4850 CU. FT.	LINING - END: 2 5/32 T.&G.	SPRINGS: 3 1/16" TRAVEL - AMERICAN LOCO. CO.
AVER. LT. WT. 58,000 LB LD. LIMIT: 119,000 LB.	" - SIDES: NONE	TRUCK TYPE: UNIT A-3 RIDE CONTROL
	ROOF: DIAGONAL PANEL - MURPHY	SPRG. PEELESS
	SIDE SILL: 6" x 6" x 3/8" ANGLE; REINF. 15" - 40 LB CHAM.	WHEELS: ONE WEAR WROUGHT STL. 33" DIA.
	" BRG CENTERS: 4'-2"	
AIR BRAKE MFG. NEW YORK AIR BRAKE CO.	SHEATHING: 0.10" RIVETED STEEL	
" SCHEDULE: AB-10"	SUPERSTRUCTURE: STEEL	
BODY CTR. PLATE: DROP FORGED STEEL		
" SIDE BRG FORGED STEEL		
CENTER SILL: 2Z-26 WELDED 36.2 LBS. EA.		
" COVER PLATE: NONE		
" AREA: 21.3 SQ. IN.		
COUPLER: E 6 1/4" x 8" SLOTTED. BOTTOM OR		
" RELEASE MIGGING: "IMPERIAL" ROTARY		
DOOR: "YOUNGSTOWN" - STAGGERED		
" FIXTURES: "CAMEL" ROLLER LIFT.		
DRAFT GEAR: CARDWELL-WESTINGHOUSE NY-II-F		
	TRUCK	
	BOLSTER: A.A.R. CODE: BSA-03DN-BN BUCKEYE	
	PATTERN NO. B-5219 (DT&I DNG W-1461)	
	BRAKE BEAM: A.A.R. #18 UNIT TYPE	
	GENERAL DRAWING: GATX 4-5507 D.T.&I. W-1324	
	JOURNAL: 5 1/2" x 10"	
	CARS: 99758, 760, 761, 762, 763,	
	D. T. & I.	
	MOTIVE POWER DEPT	11-2-51
	REVISIONS	
	9/17	SEPT 57
	1/65	5/10
	5/14	3/74
	8/74	



BRAKE DIAGRAM

GENERAL
 BUILT BY:- GREENVILLE STEEL CAR CO.
 YEAR BUILT:- 1934
 BUILDER'S REF.- O.O. 207
 R.R. SPEC. NO.- NONE.
 A.A.R. CLASS:-
 NO. BUILT:- 1
 CAPY.- 1321 CU. FT.
 AVERAGE LT. WT.- LBS.

DOOR FIXTURES-ROOF:- CAR BUILDER'S.
 " " -HOPPER:- "ENTERPRISE"
 DRAFT GEAR:- "NATIONAL" M-17-A. 2 3/4" TRAVEL.
 " " ATTACHMENT:- C.S. YOKE. B.S.C.
 END SILL:- 5" x 3 1/2" x 3/8" L.
 GENERAL DRAWING:- 13394 DT&I V-342
 HAND BRAKE:- "KLASING"
 SIDE SILL:- BUILT-UP. 6" x 3 1/2" x 5/16" L.
 " BRG. CENTERS:- 4'-2"

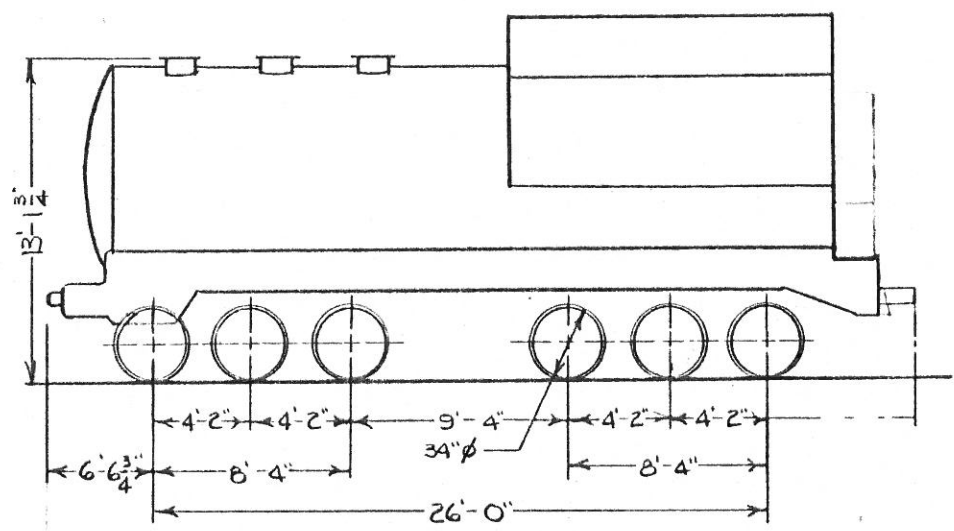
TYPE OF TRUCK:- PRESSED SPRING PLANK WITH "MOBIL" RETAINER.
 WHEELS:- 33" STEEL
 WEIGHT OF BOLSTER:- 812 LBS.
 " " SIDE FRAME:- 600 LBS.
 " " ONE TRUCK:- 7,950 LBS.

BODY
 AIR BRAKE MFG.- N.Y.A.B. CO.
 " " SCHEDULE:- AB.
 BODY CTR. PLT.- 1 1/4" FORGED STEEL.
 " SIDE BRG.- FORGED STEEL.
 CENTER SILL:- C.B. 12" 40.3 LBS. C-112"
 " " COVER PLT.- 13 1/2" x 1/2"
 " " AREA:- 30.2 SQ. IN.
 COUPLER:- "E" 6 1/4" x 8" SLOTTED. BOTTOM OP.
 " RELEASE RIG:- "IMPERIAL" ROTARY.
 DOORS-ROOF:- CAR BUILDER'S.
 " -HOPPER:- "ENTERPRISE."

TRUCK
 BOLSTER:- B.S.C. PATT. NO. B-5052.
 BRAKE BEAM:- NO. 15 A.S.F.
 " " SAFETY:- "CRECO" FOUR-POINT.
 CENTER PLATE:- INTEGRAL.
 GENERAL DRAWING:- 13398
 JOURNAL:- 5 1/2" x 10"
 " BOX:- INTEGRAL.
 R.R. SPEC. NO.- NONE.
 SIDE BEARING:- "STUCKI" SPRING STEEL.
 " FRAME:- A.S.F. PATT. NO. 21202-A.
 SPRINGS:- 1932 A.A.R. "D-1" 1 5/8" TRAVEL

CARS:- 99759
 D.T.&I.
 MOTIVE POWER DEPT. 9-1-41
 REVISION
 SEPT 5-62 1-64 1 / 57 / RIN / FAM RW. / 65

— WATER SUPPLY CAR —



- GENERAL -		- TRUCK -
BUILDER: AMERICAN LOCOMOTIVE CO.		
YEAR BUILT: 1942		
A.A.R. CLASS:		
WATER CAPACITY:	14,300 GALS.	
LIGHT WT.:	119,000 LBS.	
		CAR: 99767
		D. T. & I.
		MECHANICAL ENGINEERING DEPT.
		- REVISION -