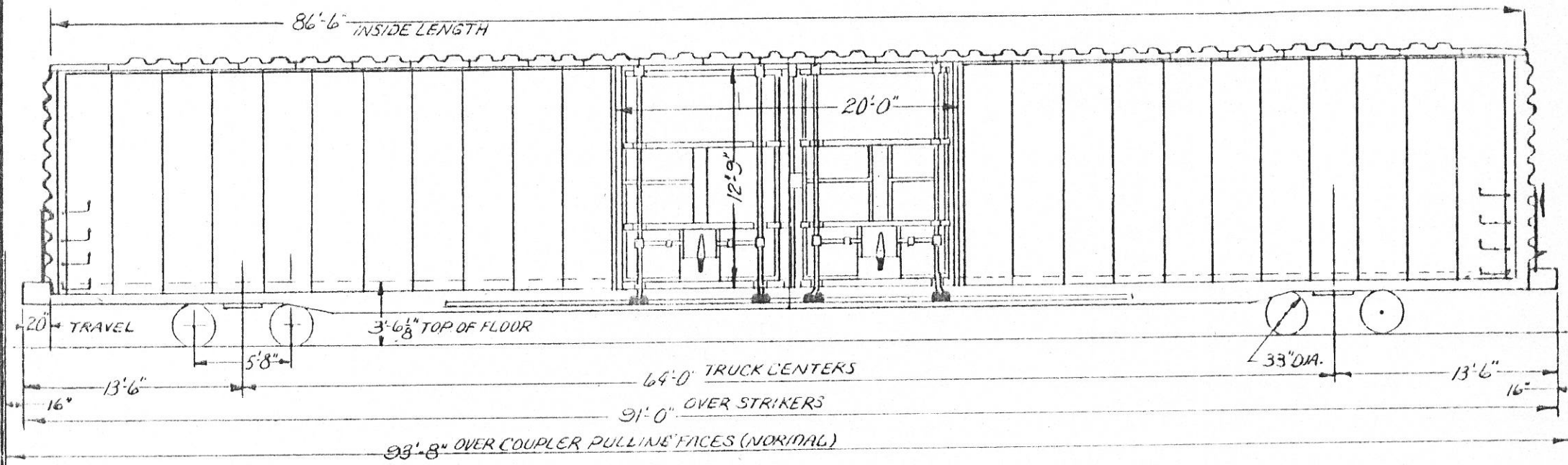


- 50 TON BOX -

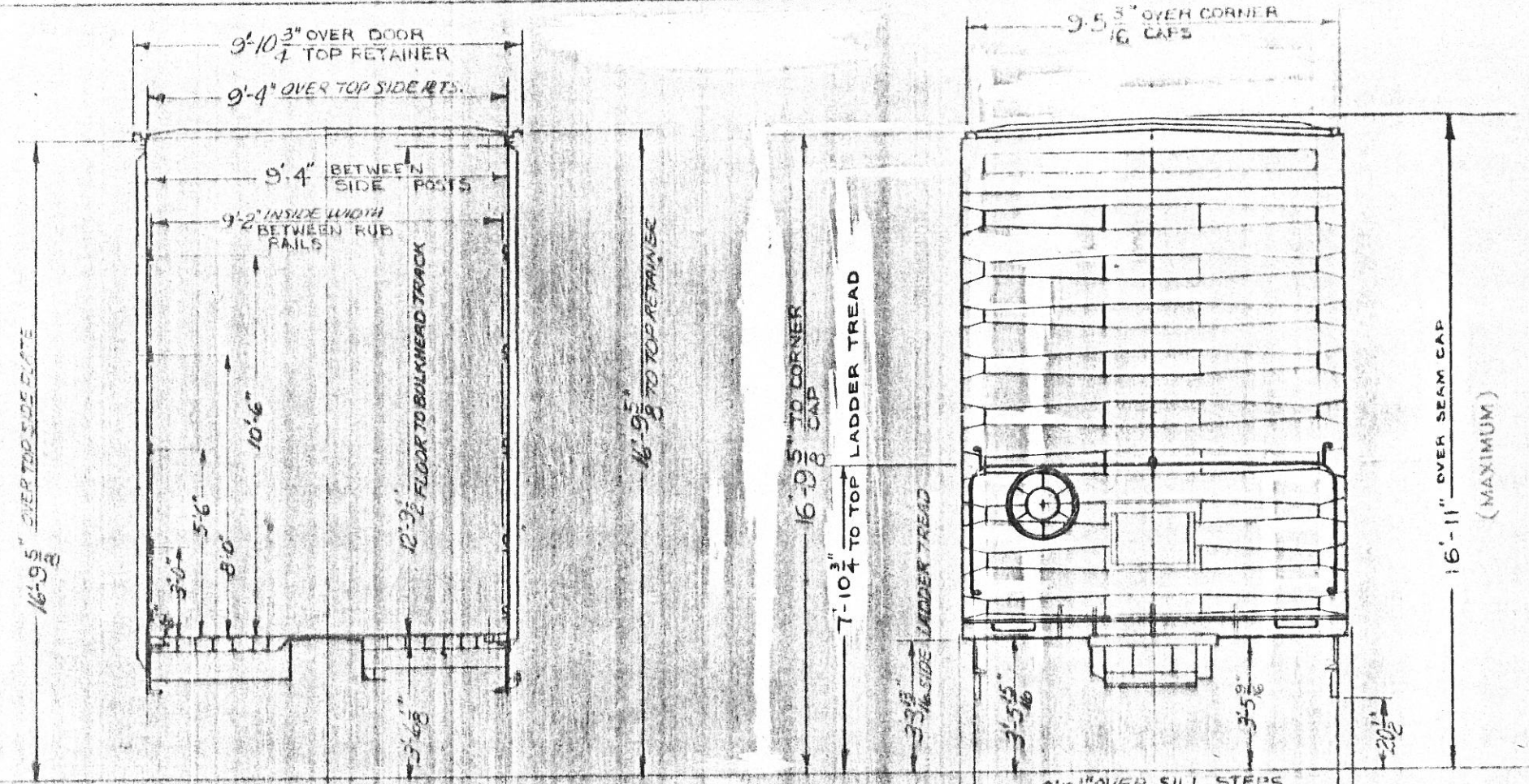


~ GENERAL ~
 BUILDER: GREENVILLE STEEL CAR CO.
 YEAR BUILT: 1964
 BUILDER'S REF: O.O. 838
 AAR CLASS: XML
 NO. BUILT: 20
 CAPACITY: 10,000 CU. FT.
 AVG. LT WT: 114,300 LBS.
 AVG. LD LIMIT: 105,700 LBS.
 ~ BODY ~
 AIR BRAKE MFG: WESTINGHOUSE AIR BRAKE CO.
 AIR BRAKE SCHEDULE: ABD 1 VALVE - WABCO PAC B3
 7 1/2 UNITS A-TRED VALVE
 BODY CENTER PLT: 13 1/4" WAUGH CASTING CG 4336
 BODY SIDE BEARING: DROP FORGED WEDGE BECT.
 CENTER SILL: SLIDING, 2 1/2 HTA 1 2 1/2" FT ROLLED IEE
 STATIONARY, 2 TO TEN 3 1/2" FT ROLLED IEE
 CENTER SILL AREA: SLIDING 24.24 SQ. IN.
 STATIONARY 18.90 SQ. IN.
 COMPARTMENTIZER: EQUI CO (DT&I DWG V 7895)
 COUPLER: TYPE "E" HEAD, TYPE "F" SHANK, 60"
 PULLING FACE TO PIN HOLE.
 COUPLER RELEASE RIGGING: STD RY EQPT (DWG)
 CROSS OVER STBP.
 CUSHIONING DEVICE: KEYSTONE RBY EQPT. CO.
 20" TRAVEL.

DOOR ADD FIXTURES: YOUNGSTOWN DOUBLE PLUG, ALUM
 OPEN INSIDE OR OUTSIDE (DWG)
 DRAFT GEAR: MINER, RF 333 (HIGH CAPACITY)
 DRAFT GEAR ATMTS: HIGH TENSILE'S YOKE (BY-48)
 ENDS: STD. RY EQPT CO. TOP SHT. 5/32" BOT SHTS. 3/16"
 END SILL: 6" x 3 1/2" x 3/8" ANGLE
 FLOOR: 3/16" PLT, CORTEN; WITH ANTI SKID COATING
 GENERAL DRAWING: GSC 29946-D, DT&I V-7446
 HAND BRAKE: MINER (NOW SPIN TYPE)
 LINING: END 3/16" PLATE
 SIDE RUB RAILS, DF-2 EVANS BELT RAIL
 ROOF: STD. RY EQPT. CO 4R-18539 (DT&I DWG)
 SIDE BEARING CTRS.: 4'-2"
 SIDE SILL: 6" x 3 1/2" x 3/8" ANGLE
 SIDE PLATE: 8" x 4 1/2" ANGLE
 SIDE SHEATHING: 1/4" PLT @ CORNER & DOOR POSTS
 .01" PLT. INTERMEDIATE SHEETS
 ~ TRUCK ~
 BOLSTER: BUCKEYE STEEL CASTINGS PATT # B-7151
 DT&I DWG W-7875 AAR IDENT # B-1895
 AAR CODE B75-01HH-EN
 BRAKE BEAM: WAB. UNIT # 582997 (INC. PISTON)
 BRAKE SHOES: RAILROAD FRICTION PRODUCTS V-141
 1 3/16" COMPOSITION
 GENERAL DWG. STD CAR TRK 3738-B (DT&I DWG W-6618)

JOURNALS: 6" x 11" ROLLER BEARING
 JOURNAL BEARINGS: TIMKEN 6" x 11" AP
 JOURNAL BEARING RETAINER: BUCKEYE FC-70 (DT&I DWG X-5945)
 SIDE BEARINGS: STUCKI 686-C SINGLE ROLLER (DWG) 140
 SIDE FRAME: BUCKEYE STEEL CASTINGS PATT # F-7161
 NARROW PEDESTAL JAW, AAR CODE P7502AV-UN
 AAR IDENT # B-866 DT&I DWG. V-7876
 SPRINGS: 2 1/2" TRUL, 10 OUTER, 10 INNER COILS / TRUCK
 TYPE OF TRUCK: 70 TON BARBER S-2-A
 STABILIZED EQPT FOR ROLLER BEARINGS
 & TRUCK MOUNTED BRAKES
 WHEELS: 33" ONE WEAR WROT STEEL J-33
 NON HEAT TREATED, FOR RAISED
 WHEEL SEAT AXLES
 CARS: 26000-26025
 D.T. & I.
 MECHANICAL ENGINEERING DEPT. 9-10-64
 ~ REVISION ~

2/65	1/66	7/70							
------	------	------	--	--	--	--	--	--	--



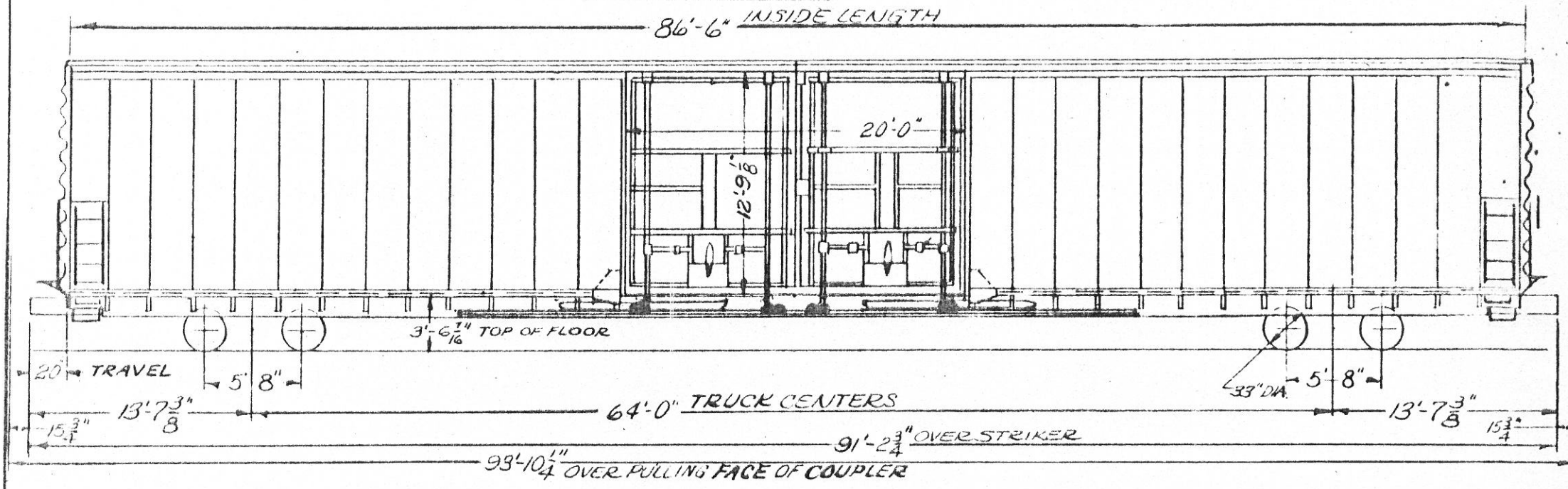
NOTE: THIS CAR EXCEEDS A.A.R. CLEARANCE LIMIT OUTLINES PLATES "B & C"



HAND BRAKE DIAGRAM

CARS: 26000-26025					
CLEARANCE DIAGRAM					
MECHANICAL ENGINEERING DEPT. 9-10-64					
- REVISIONS -					
2/65					

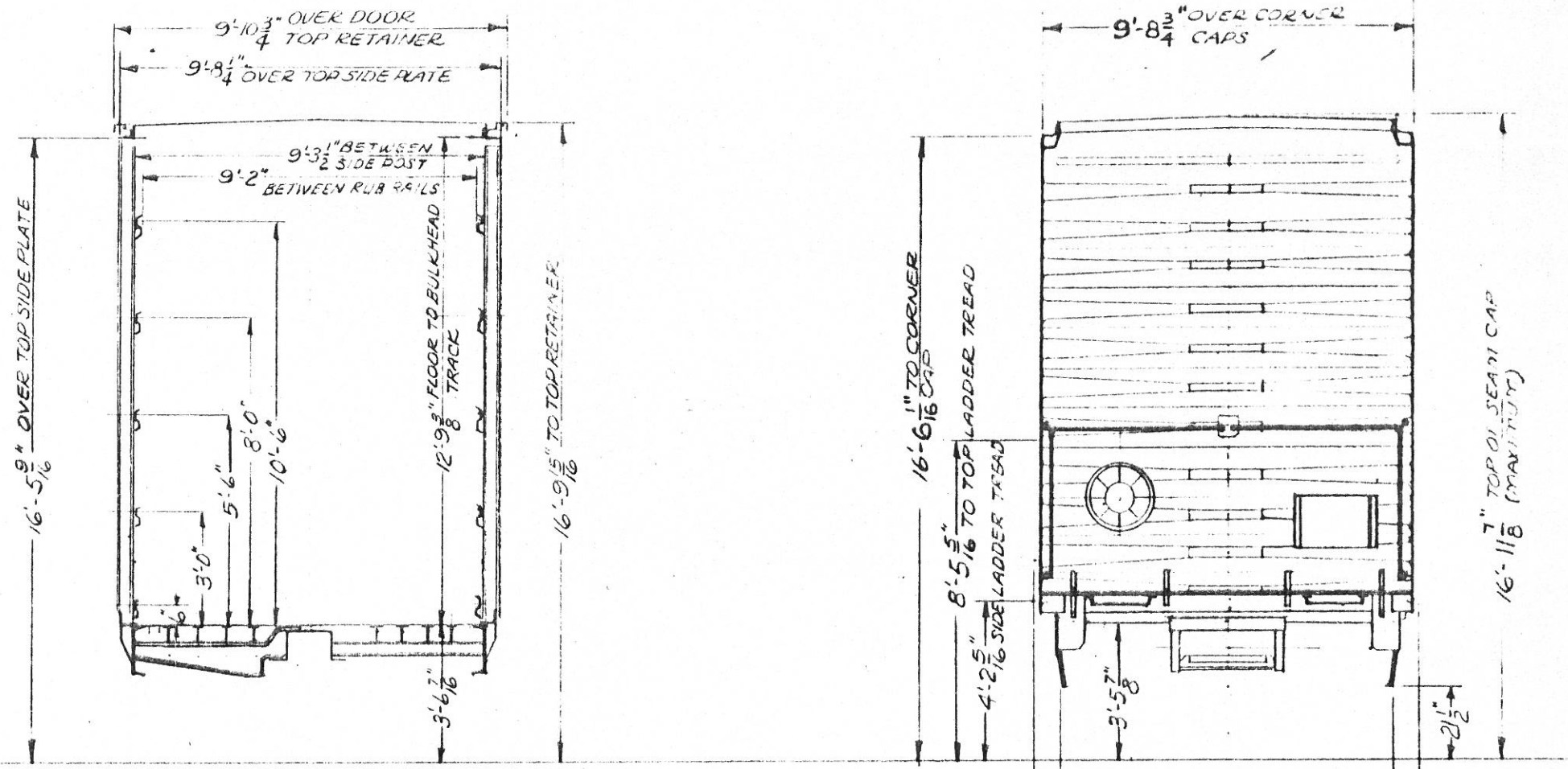
50 TON BOX



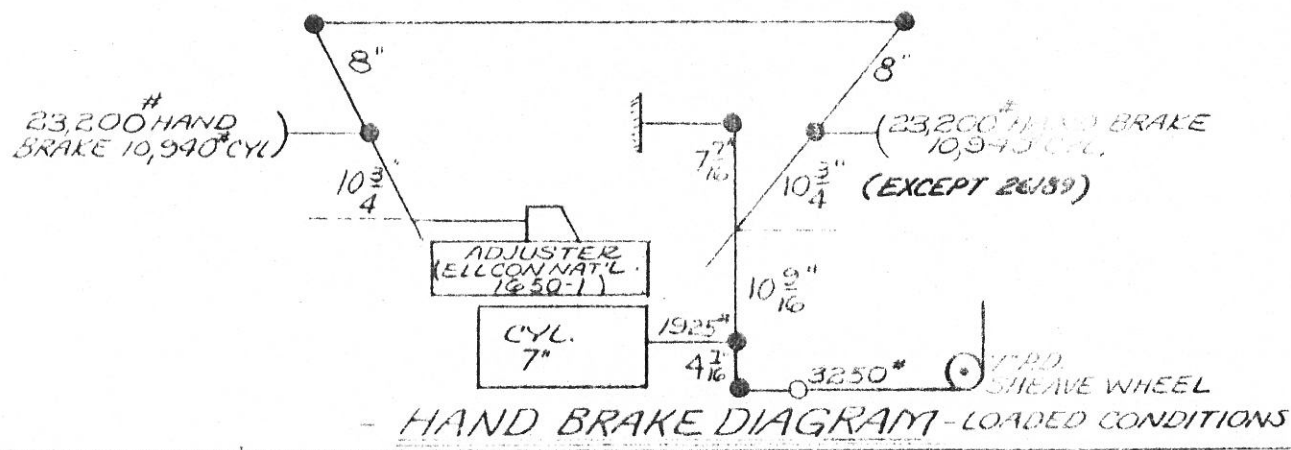
NOTE: CONVERTED TO WABCOAAR-26189 (1976)

- GENERAL -		DOOR AND FIXTURES: YOUNGSTOWN DOUBLE PLUG ALUM. OPEN INSIDE OR OUTSIDE (DWG. V-7854)	JOURNALS: 6"X11" ROLLER BEARING
BUILDER: PULLMAN STANDARD		DRAFT GEAR: MINER RF 399 (HIGH CAPACITY)	JOURNAL BEARINGS: TIMKEN 6"X11" AP
YEAR BUILT: 1965		DRAFT GEAR ATT'NPTS: HIGH TENSILE C.S. WIRE (BY-25)	JOURNAL BEARING RETAINER: BUCKEYE FL-70 (DT&I DWG. V-819)
MODEL NO. REF: 5510		ENDS: PULLMAN STANDARD: TOP SHY. 302" BOT SHY. 1/2"	SIDE BEARINGS: SINGLE ROLLER TYPE # 656-C (STUCK)
CLASS: X37L		INTER. SHY. .7793"	SIDE FRAME: NATIONAL CASTING CO. PATT. NO. 43937-4-A
CO. BUILT: III		END SILL: 6" X 3 1/2" X 5/16" ANGLE	NARROW PEDESTAL JAW AAR CODE F75-02AN-1A
CAPACITY: 10,000 CU. FT.		FLOOR: 1/4" PLT. TRI-TEN ANTI-SELD COATING	AAR IDENT. # 8-943 (DT&I DWG. V-809 B)
AUG. LT. WT. 109,900 LBS.		GENERAL DRAWING: 537-F-49-B (DT&I DWG. V-8001)	SPRINGS: 2 1/2" TRVL. 10 OUTER 10 INNER COILS / TRUCK D-3
AUG. LD. LIMIT: 110,100 LBS.		HAND BRAKE: AJAX-CONSOLIDATED CO. 14665-B	TYPE OF TRUCK: 70 TON BARBER S-2-A
- BODY -		LIVING: END-3/16" PLATE	STABILIZED EQPT. FOR ROLLER BEARINGS
AIR BRAKE: MFG. WESTINGHOUSE AMERICAN BRAKE SHOE		ROOF: PULLMAN-STD. 592-H-100-T (DT&I DWG. V-8077)	& AMERICAN BRAKE SHOE TRUCK MOUNTED
AIR BRAKE SCHEDULE: AAB VALVE: A8307		SIDE BEARING CTPS: 4'-2"	BRAKES INCLUDING S. ACF ADJUSTER
WINDERS: #2126 8 TRED VALVE		SIDE SILL: 4" X 4" X 5/16" ANGLE (TRI-TEN)	WHEELS: 33" ONE WEAR (1W) CAST STEEL CT-37
BODY CENTER PLATE: 1/4" CAST STEEL (DT&I DWG. V-7743)		SIDE PLATE: 3" @ 6.7" Z AND 4" X 3" X 3/16" ANGLE	
BODY SIDE BEARING: HARDENED STEEL CARNEGIE SECTM-119A		SIDE SHEATHING: 1/4" PLT. @ CORNER & DOOR POSTS	
CENTER SILL: SLIDING 2 TRITEN 4.5' FT ROLLED ZEE		10" PLT. INTERMEDIATE SHEETS	
STATIONARY 2 CHS. 3.9' FT ROLLED ZEE		-- TRUCK --	
CENTER SILL AREA: SLIDING - 2 1/2 24 SQ IN.		BOLSTER: NATIONAL CASTINGS CO. PATT. NO. 43932-29	BOX: 26100-26210
STATIONARY-7830 SQ IN.		(DT&I DWG. W-3096) AAR IDENT. # B-1091	D.T. & I.
COMPARTMENTIZERS: EQUIP CO (DT&I DWG. V-7877)		BOLSTER (COUNTER PLATE WEAR RING): NATIONAL CASTING CO.	MECHANICAL ENGINEERING DEPT. 6-30-65
CRUICER: TYPE F HEAD TYPE F SHANK (60)		No. 43292 (DWG. Y-9097)	- REVISION -
PULLING FACE TO PIN HOLE		BRAKE BEAM: UNIT #18	
WINDYER RELEASE RIGGING: PULLMAN STD CAR (DWG. V-7995)		BRAKE SHOES: AMERICAN BRAKE SHOE CO. AAR #1	
CROSS OVER STEP: US GYPSUM 62165-E		GENERAL DWG: (DT&I DWG. W-6613)	
CONSOLIDATING DEVICE: PULLMAN STANDARD			
(HYDRA-FRAME 20) 20" TRAVEL			

66/78



NOTE: THIS CAR EXCEEDS AAR CLEARANCE LIMIT OUTLINES PLATES "B" & "C"

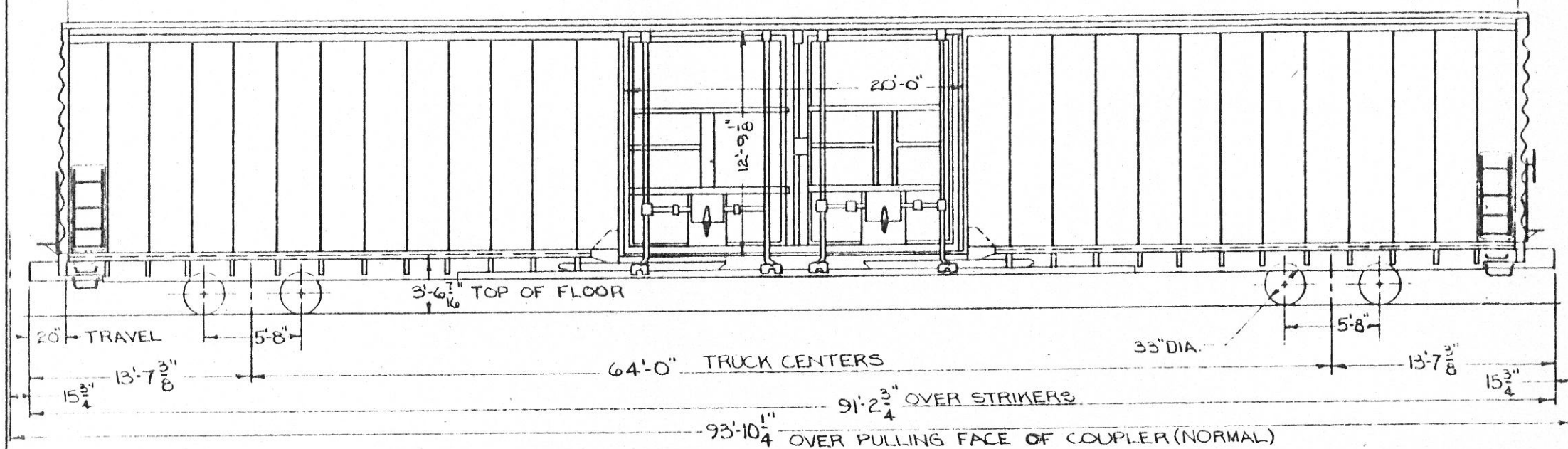


9'-11 3/16" OVER SIDE LADDERS (MAXIMUM)
 9'-1 1/8" OVER SILL STEP
 3'-5 7/8"

CARS: 26100-26210	
CLEARANCE DIAGRAM	
MECHANICAL ENGINEERING DEPT	7-2-65
- REVISIONS -	
7/10	8/7B

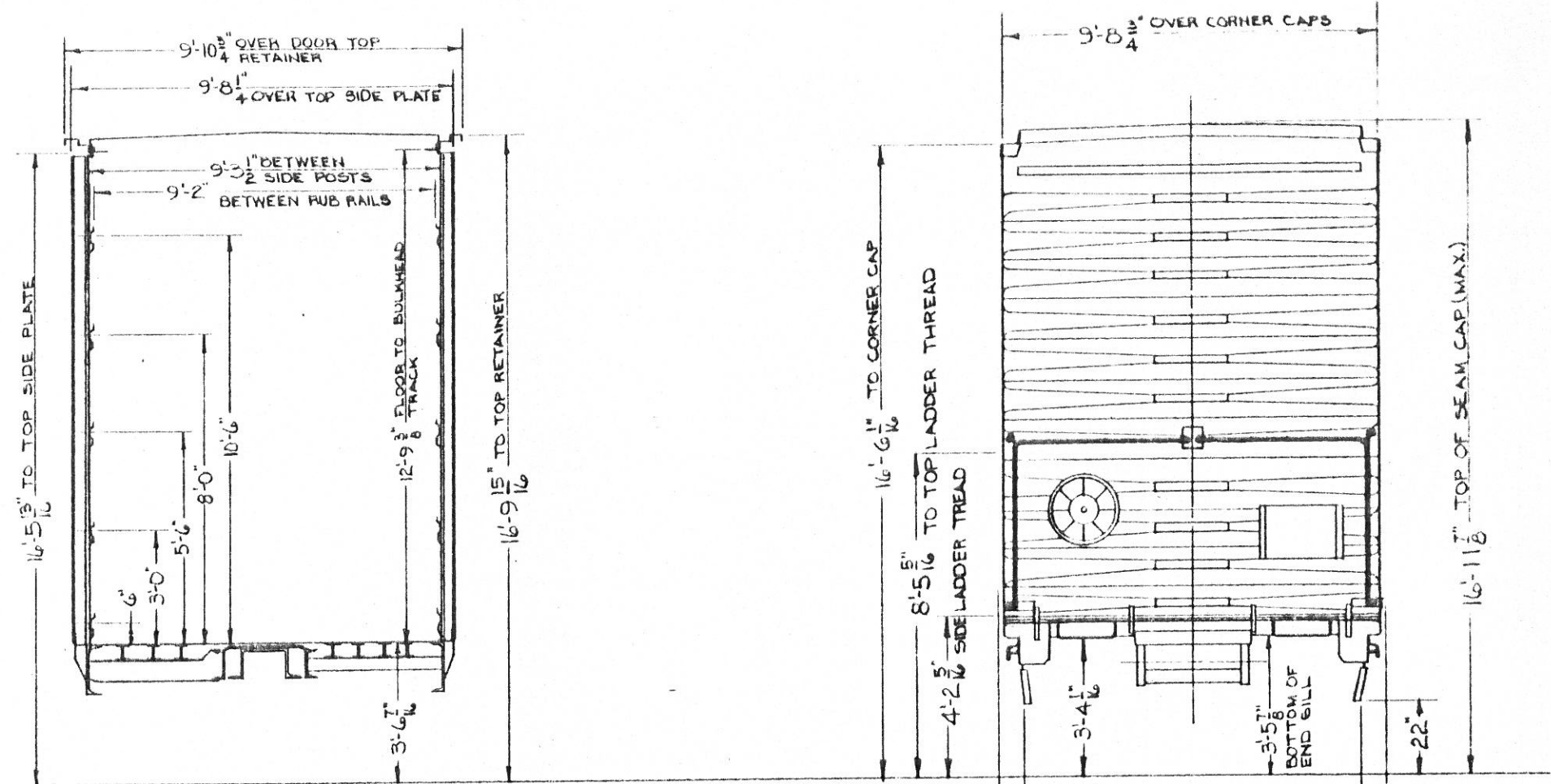
50 TON BOX

86'-6" INSIDE LENGTH

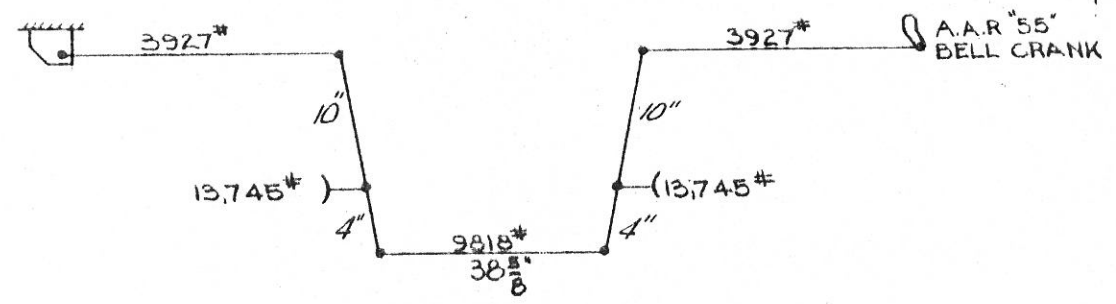


NOTE 1: GRADE "C" CAST STEEL CENTER PLATES, BUCKEYE PATT. 45-62-HT (DWG. W-9466) APPLIED TO ALL CARS EXCEPT: 26347, 26427 WAUGH CASTING CG-4354, 26304, 26353, 26354, 26357, 26360, 26391, 26397 26409, 26424 PULLMAN FABRICATED, 26422 PULLMAN FABRICATED-REBUILT BODY BOLSTER

- GENERAL -		CUSHIONING DEVICE: PULLMAN STD. HYDRA-FRAME 40 (20" TRAVEL)	BRAKE SHOES: COMPOSITION, RAILROAD FRICTION PRODUCTS #141
BUILDER: PULLMAN STANDARD (BESSEMER)	YEAR BUILT: 1946	DOOR AND FIXTURES: YOUNGSTOWN DOUBLE PLUG (ALUM.) OPEN FROM INSIDE OR OUTSIDE (DT&I DWG.)	GENERAL DWG.: DT&I DWG. X-8364
BUILDERS REF: 9109-A-4A	A.A.R. CLASS: XML	DRAFT GEAR: MINER RF-355 (HIGH CAPACITY)	JOURNALS: 6"x11" ROLLER BEARINGS
NO. BUILT: 147	CAPACITY: 10,000 CU. FT.	DRAFT GEAR ATTACHMENTS: HIGH TENSIL C.S. YOKE (BY-4E)	JOURNAL BEARINGS: HYATT 6"x11" 4-R-2043 (GROUP 2)
AVG. LT. WT.: 109,000 LBS.	AVG. LD. LIMIT: 111,000 LBS.	ENDS: PULLMAN STD. TOP SHEET 3/2 O.H.S., INTER. SHEET .1793" QHS BOTTOM SHEET 1/4 O.H.S.	SIDE BEARINGS: SINGLE ROLLER TYPE (STUCKI 650-C) DT&I DWG. Y-1470
- BODY -		END SILL: 6"x3 1/2"x 5/16" ANGLE	SIDE FRAME: A.A.R. CODE F75-02BN-UA, A.S.F. PATTERN NO. 21982-D, DT&I DWG. W-8366, A.A.R. IDENTIFICATION NO. 903, OR BUCKEYE PATTERN NO. F-7161, DT&I DWG. V-7876, A.A.R. IDENTIFICATION NO. D864
AIR BRAKE MFG.: WESTINGHOUSE	AIR BRAKE SCHEDULE: ABD VALVE - WABCO PAC B-3, 7 1/2" UNITS, A-1 REDUCTION RELAY VALVE	FLOOR: 1/4" PLT. TRI-TEN WITH ANTI-SKID COATING	SPRINGS: 2 1/2" H. OUTER, 10 INNER COILS PER TRUCK, A.A.R. B-3
BODY CENTER PLATE: 13 3/4" SEE NOTE 1	ROOF: PULLMAN STD.	GENERAL DWG: 601-F-62 (DT&I DWG.)	TYPE OF TRUCK: BARBER S-2-A 6"x11" STABILIZED EQUIPPED FOR ROLLER BEARINGS (NARROW PEDESTAL) & TRUCK MOUNTED BRAKES
BODY SIDE BEARING: HARDENED STEEL - CARNEGIE SEC. M-4198	CENTER SILL: SLIDING - 2 TRI-TEN 4 1/2" / FT. ROLLED ZEE STATIONARY - 2-13" O.H.S. CHANNELS @ 31.6" / FT.	LINING: END - 3/4" PLT. SIDE - RUB RAILS, DF-2 EVANS BELT RAIL	WHEELS: 33" ONE WEAR CAST STEEL CJ-33
CENTER SILL AREA: SLIDING - 24.24 SQ. IN. STATIONARY - 16.60 SQ. IN.	COMPARTMENTIZER: PRECO (DT&I DWG. V-8382)	SIDE BEARING CENTERS: 4'-2"	BOX: 26300-26446 DT&I
COUPLER: TYPE "F" HEAD, TYPE "F" SHANK 60" FROM PULLING FACE TO PIN HOLE	COUPLER CENTERING DEVICE: STD. RWY. EQUIP. CO. (DT&I DWG.)	SIDE PLATE: 3" @ 6.7" / FT. & 4"x3"x 5/16" ANGLE SIDE SHEATHING: 1/4" SHT. @ CORNER AND DOOR POSTS 10" SHT. INTERMEDIATE SHEETS SIDE SILL: 4"x4"x 5/16" ANGLE (TRI-TEN)	
COUPLER RELEASE MECHANISM: PULLMAN STD. (DT&I DWG.)	CROSSOVER STEP: MORTON (DT&I DWG. W-8291)	- TRUCK -	
		BOLSTER: A.A.R. CODE B7S-08HN-FX A.S.F. PATTERN 22253-DL DT&I DWG. W-12157 A.A.R. IDENT. NO. 1873	MECHANICAL ENGINEERING DEPT. 6-B-666
		BOLSTER WEAR PLATES: HORIZONTAL, DWG. Z-8692 VERTICLE, DWG. Y-10326	- REVISION -
		BOLSTER CENTER PLATE WEAR RING: DT&I DWG. Y-8097	10/
		BRAKE BEAM: W.A.B. UNIT # 566260 (INCLUDING PISTON)	70/



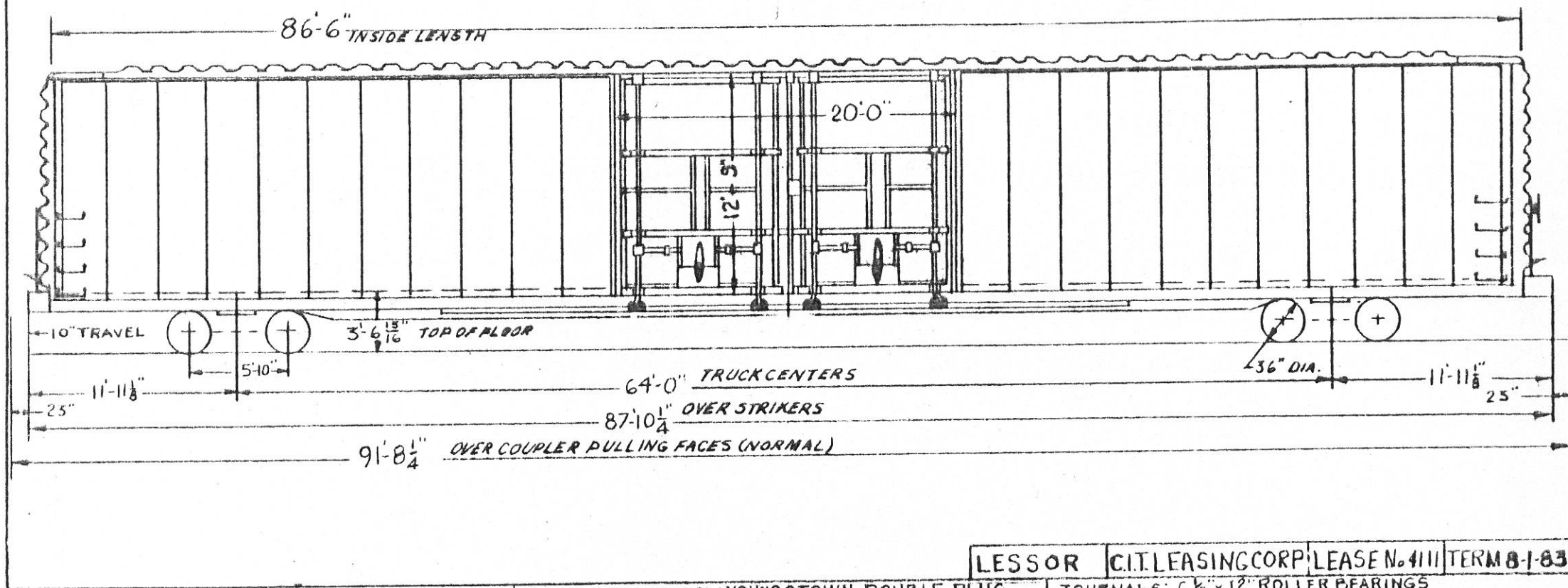
NOTE: THIS CAR EXCEEDS A.A.R CLEARANCE LIMIT OUTLINES, PLATES 'B' & 'C'



HAND BRAKE DIAGRAM

CARS: 26300-26446	
CLEARANCE DIAGRAM	
MECHANICAL ENGINEERING DEPT	8-13-66
- REVISIONS -	

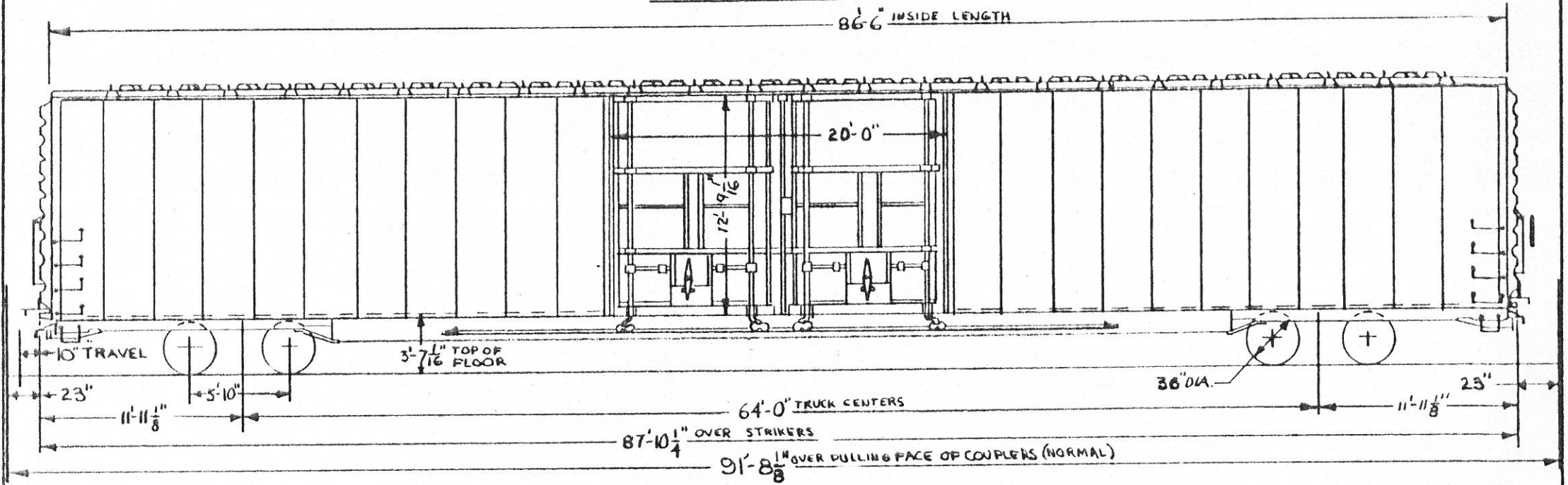
- 75 TON BOX -



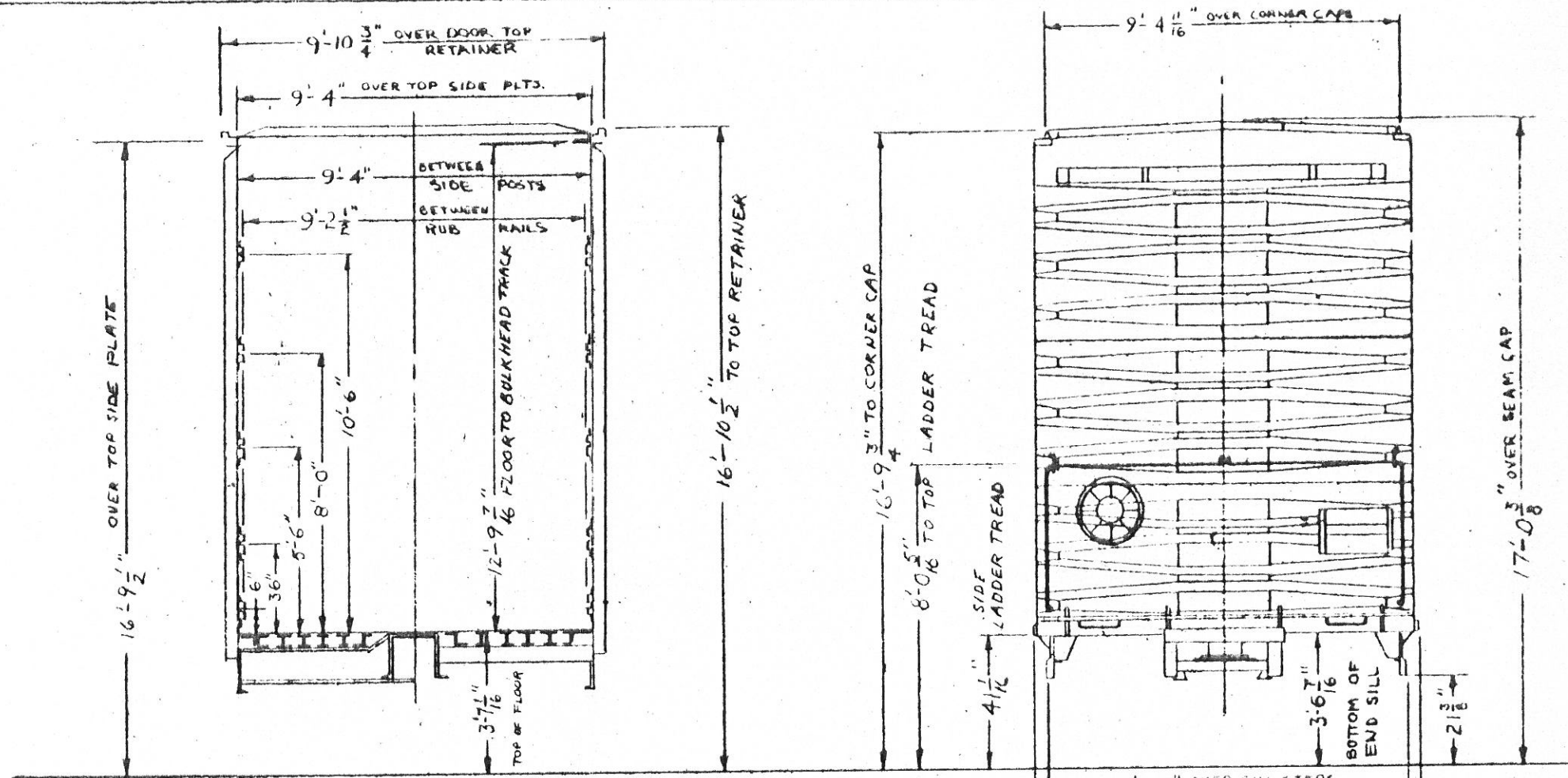
LESSOR CITILEASINGCORP LEASE No. 4111 TERM 8-1-83

<p>~ GENERAL ~</p> <p>BUILDER: GREENVILLE STEEL CAR CO.</p> <p>YEAR BUILT: 1968</p> <p>BUILDERS REF: O.O. 953</p> <p>AAR CLASS: XL</p> <p>NO. BUILT: 135</p> <p>CAPACITY: 10,000 CU. FT.</p> <p>AVG. LT. WT: 110,200 LBS</p> <p>AVG. LD. LIMIT: 152,800 LBS</p>	<p>DOOR AND FIXTURES: YOUNGSTOWN DOUBLE PLUG (ALUMINUM) OPEN FROM INSIDE OR OUTSIDE (DWG. V-9084)</p> <p>ENDS: STANRAY SE-19051-B (DT & I DWG. V-8789)</p> <p>TOP SHEET 5/32", INTER. SHEET 3/16", BOTTOM SHEET 3/16"</p> <p>ENDSILL: 6" x 3 1/2" x 3/8" ANGLE</p> <p>FLOOR: 1/4" PLT. TRI-TEN STEEL WITH ANTI-SKID PAINT</p> <p>GENERAL DRAWING: G.S.C. 3316 (DT & I V-9606)</p> <p>HAND BRAKE: MINER 6600-L 1966</p> <p>LINING END: 1/16" STL. PLT.</p> <p>SIDE: RUD RAILS, WEST. RY DEVICES</p> <p>ROOF: STANRAY 4R-19052-A (DWG. W-8790)</p> <p>SIDE BEARING STRS: 4'-2"</p> <p>SIDE SILL: 3 1/2" x 3 1/2" x 3/8" ANGLE</p> <p>SIDE REINFORCEMENT: 15" @ 33.9" / FT. AND 10" @ 24.9" / FT. CHANNEL</p>	<p>JOURNALS: 6 1/2" x 12" ROLLER BEARINGS</p> <p>JOURNAL BEARINGS: 6 1/2" x 12" - 26500-26569 TIMKEN I-A 26570-26634 HYATT 6-A</p> <p>JOURNAL BEARING RETAINER: BETHLEHEM (DWG. Y-5849)</p> <p>SIDE BEARINGS: STUCKI 68B-B (DWG. Z-5817)</p> <p>SIDE FRAMES AAR CODE: F9C-05BN-UA A.S.F. PATT. 22141-A DT & I DWG. W-8769 AAR IDENTIFICATION NO. F-5017</p> <p>NARROW PEDESTAL</p> <p>SPRINGS: 3 1/2" TRAVEL 20 OUTER 10 INNER COILS PER TRUCK, AAR D-5</p> <p>SNUBBER: HOLLAND D-5 (DWG. Z-8768) 4 PER TRUCK</p> <p>TYPE OF TRUCK: BARBER S-2-C 6 1/2" x 12" STABILIZED NARROW PEDESTAL ROLLER BEARING</p> <p>WHEEL: 36" 2 WEAR WROT STEEL J-36</p>
<p>~ BODY ~</p> <p>AIR BRAKE MFG: NEW YORK AIR BRAKE</p> <p>AIR BRAKE SCHEDULE: ABD VALVE NYCOPAC B382</p> <p>UNIT (NEN-B282) A.I. REDUCTION RELAY VALVE</p> <p>BODY CENTER PLT: 13 3/4" DRESSER (DWG. X-11020)</p> <p>BODY SIDE BEARING: HARDENED STEEL (DWG. Y-9291)</p> <p>CENTER FILLER: SYN-WAYNE (DWG. W-9085)</p> <p>CENTER SILL: 41.24" / FT. ROLLED ZEE</p> <p>CENTER SILL AREA: 24.24 SQ. IN.</p> <p>COMPARTMENTIZER: EQUICO 222-H-1C792-</p> <p>COUPLER: TYPE "E" HEAD TYPE "F" SHANK 60" FROM PULLING FACE TO PIN HOLE</p> <p>COUPLER CENTERING DEVICE: STANRAY (DWG. V-8785)</p> <p>COUPLER RELEASE RIGGING: STANRAY (DWG. W-8784)</p> <p>CROSS OVER STR: APEX 4459 (DWG. X-8775)</p> <p>CUSHIONING DEVICE: FREIGHTMASTER END OF CAR NO. B7.14120 (9" TRAVEL IN BUFF) IN DRAFT</p>	<p>~ TRUCK ~</p> <p>BOLSTER: AAR CODE-NONE NATIONAL CASTINGS PATT. NO. 48002-1-C (DWG. W-8791) AAR IDENTIFICATION NO. B-1910 ROLLER BEARING</p> <p>BOLSTER CENTER PLATE: HORIZONTAL WEAR PLATE (DWG. Z-8692) VERTICAL WEAR PLATE (DWG. Y-8097)</p> <p>BRAKE STRAIN: NYAB N-8977 (INCLUDING PISTON)</p> <p>BRAKE SHOES: COMPOSITION: R.F.F. V-141</p> <p>GENERAL DWG: A.S.F. 74132-A (DT & I W-8776)</p>	<p>CARS: 26500-26634</p> <p>D.T. & I.</p> <p>MECHANICAL ENGINEERING DEPT. 10-24-69</p> <p>REVISION</p>

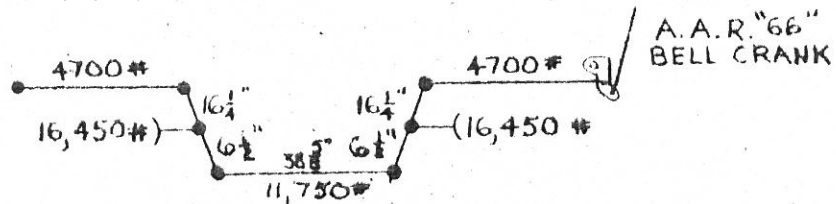
— 75TON BOX —



LESSOR		CREEKO EQUIP CORP.	LEASE 4139	TERM. 7-15-83
— GENERAL —		DOOR & FIXTURES: YOUNGSTOWN DOUBLE PLUG (ALUMINUM) OPENS FROM INSIDE OR OUTSIDE (DWG. V-9084)	JOURNALS: 6 1/2" x 12" ROLLER BEARINGS	
BUILDER: GREENVILLE STEEL CAR CO.	YEAR BUILT: 1968	ENDS: STANRAY 5E-19051-B (DT&I DWG. V-8789)	JOURNAL BEARINGS: TIMKEN 6 1/2" x 12" 1-A	
BUILDERS REF NO. 0.0.956	A.A.R. CLASS: XL	TOP SHEET 5/32" INTER. SHEET 3/16" BOTTOM SHEET 3/16"	SIDE BEARINGS: STUCKI G88-B (DWG. Z-5817)	
NO. BUILT: 15	CAPACITY: 10,000 CU. FT.	ENDSILL: 6" x 3 1/2" x 3 3/8" ANGLE	SIDE FRAMES: A.A.R. CODE F9C-058N-UA ASF PATT.# 22141-A (DT&I DWG. W-8769) AAR IDENT NO. 5017	
AVE. LT. WT. 110,800 LBS.	AVE. LOAD LIMIT 152,200 LBS.	FLOOR: 1/4" STEEL PLATE (TRI-TEN) WITH ANTI-SKID PAINT	SPRINGS: A.A.R. D-5 14 OUTER & 14 INNER COILS PER TRUCK SINGLE SIDE SPRINGS - DWG. Y-7041	
— BODY —		GENERAL DRAWING: G.S.C. 32981- (DT&I DWG. V-9616)	TYPE OF TRUCK: BARBER S-2-C, 6 1/2" x 12" STABILIZED	
AIR BRAKE MFG.: NEW YORK AIR BRAKE	AIR BRAKE SCHEDULE: A-B VALVE, B-3, 8 1/2" UNITS, NYCOPAC, A-T REDUCTION RELAY VALVE (N 8982)	HANDBRAKE: EQUIPCO - TYPE 4000 (1966)	EQUIPPED FOR ROLLER BEARINGS AND TRUCK MOUNTED BRAKES, NARROW PFDL.	
ROOF: STANRAY 4R-19052-A (DWG. W-8790)	SIDE PLATE: 8" x 4" x 1/2" ANGLE	LINING: END: 3/16" STEEL PLATE	WEIGHT OF 1 TRUCK: 10,750 LBS.	
SIDE SHEATHING: 1/4" SHT. @ CORNER & DOOR POSTS	10" SHT. - INTERMEDIATE SHEETS	SIDE: RUB RAILS - WESTERN BY DEVICES	WHEELS: 36" 1 WEAR WROUGHT STEEL H-36	
BODY CENTER PLATE: 13 3/4" FABRICATED (DWG. Y-8780)	BODY SIDE BEARING: HARDENED STEEL (DWG. Y-9291)	SIDE SILL: 3 1/2" x 3 1/2" x 3 3/8" ANGLE	CARS: 26635 - 26649	
CENTER FILLER: SYM-WAYNE (DWG. W-9085)	CENTERSILL: 2, 2-26 @ 51.2 #/FT. EX-TEN 50	SIDE SILL REINFORCEMENT: 15 @ 33.9 #/FT & 10 @ 24.9 #/FT CHANNELS	D. T. & I.	
CENTER SILL AREA: 30.12 SQ. IN.	COMPARTMENTIZER EQUIPCO 222-H-16792	— TRUCK —		MECHANICAL ENGINEERING DEPT. 1-28 70
COUPLER: EG4HT68 BOTT. OPERATED	COUPLER CENTERING DEVICE: STANRAY (DWG. V-8785)	BOLSTER: A.A.R. CODE B9S-211H-FX A.S.F. PATT. NO. 222576A (TOTAL DWG. NO. 1) AAR IDENT NO. 2047	— REVISIONS —	
COUPLER RELEASE RIGGING: STANRAY (DWG. W-8784)	CROSSOVER STEP: APYX 4459 (DT&I DWG. X-8775)	BOLSTER CENTER PLATE WEAR PLATES: HORIZONTAL: A.S.F. #7737 (DWG. Z-8672) VERTICAL: ASP #75607 (DWG. Y-8097)		
CUSHIONING DEVICE: "FREIGHTMASTER" END OF CAR	NO. 87, 14120 (3 TRAVEL BUFF, 1" IN DRAFT)	BRAKE BEAM: NYAB #N-8977 (INCLUDING PISTON)		
		BRAKE SHOES: RFP V-141		
		GENERAL DWG. A.S.F. 73991-A (DT&I)		



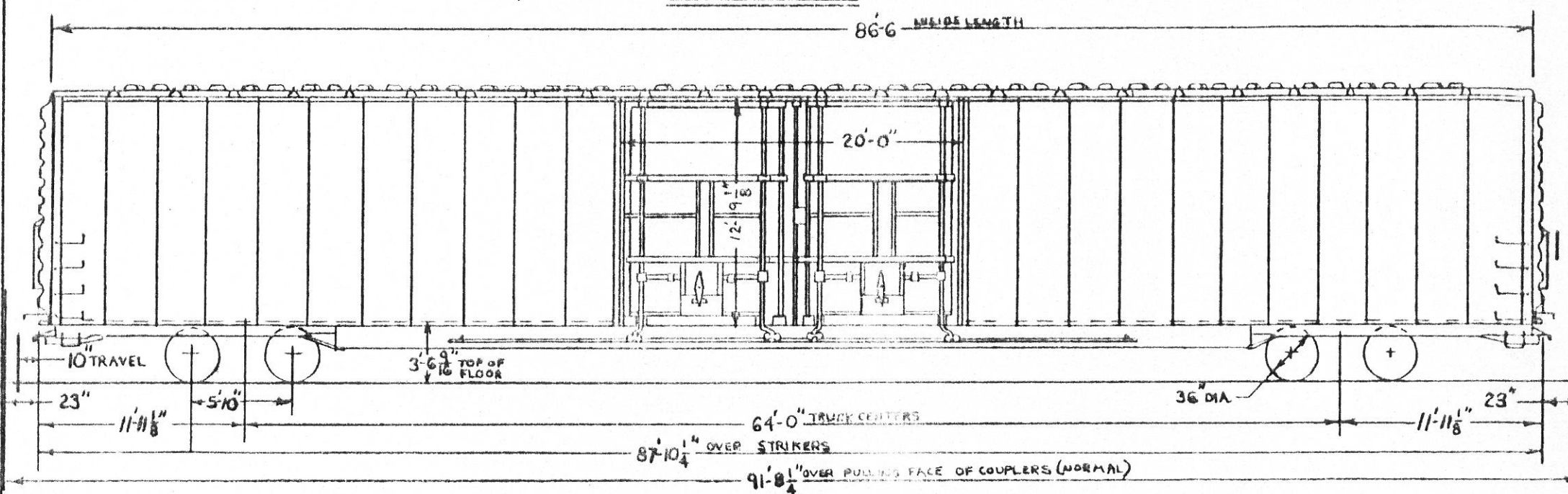
NOTE: THIS CAR EXCEEDS A.A.R CLEARANCE LIMIT OUTLINES PLATES "B & C"



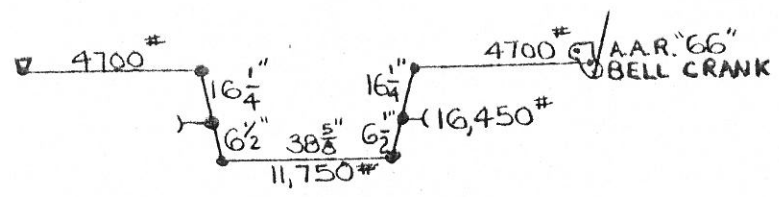
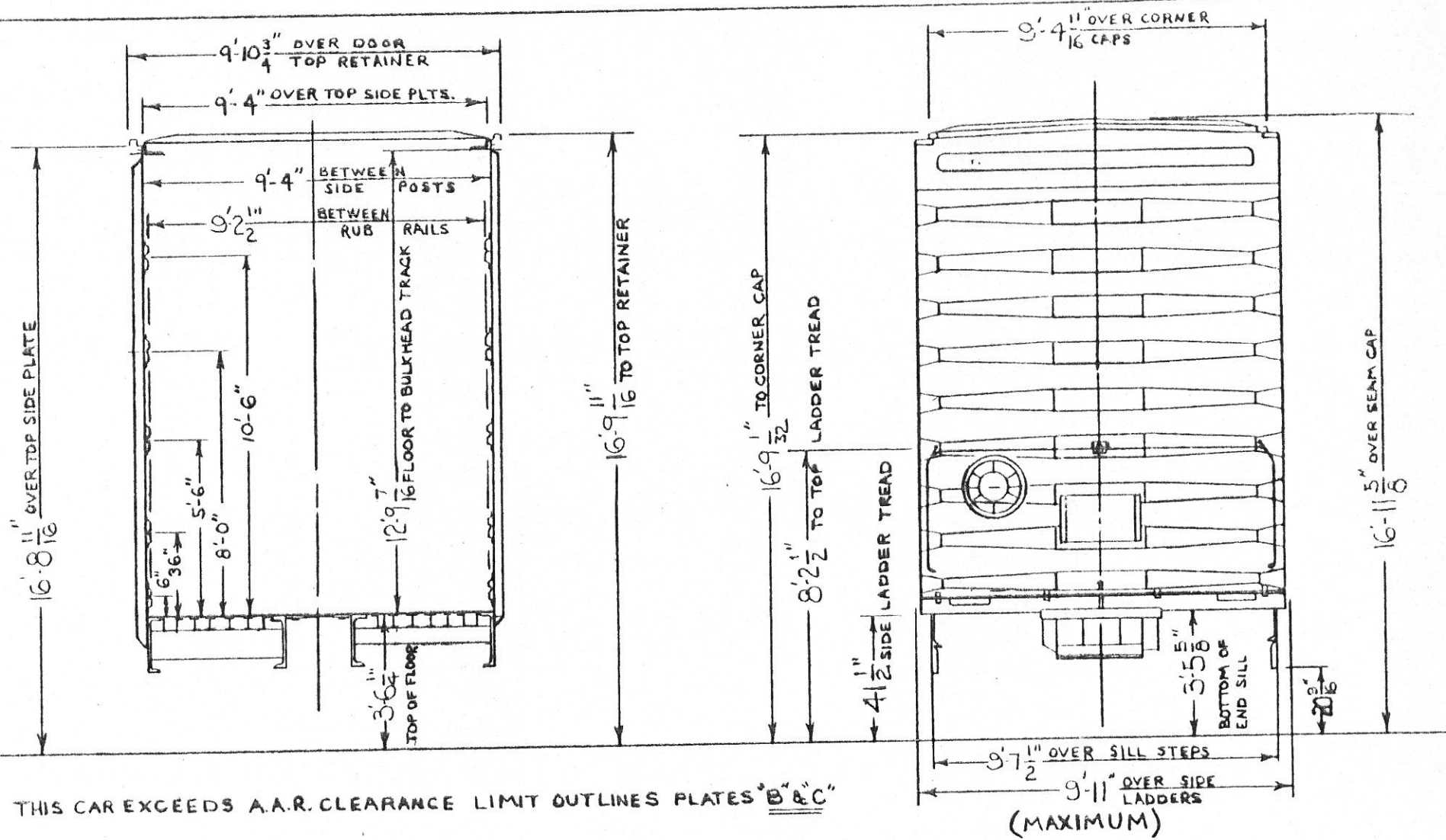
HAND BRAKE DIAGRAM

CARS: 26635 - 26649				
CLEARANCE DIAGRAM				
MECHANICAL ENGINEERING DEPT. 1-26-70				
— REVISIONS —				

75 TON BOX

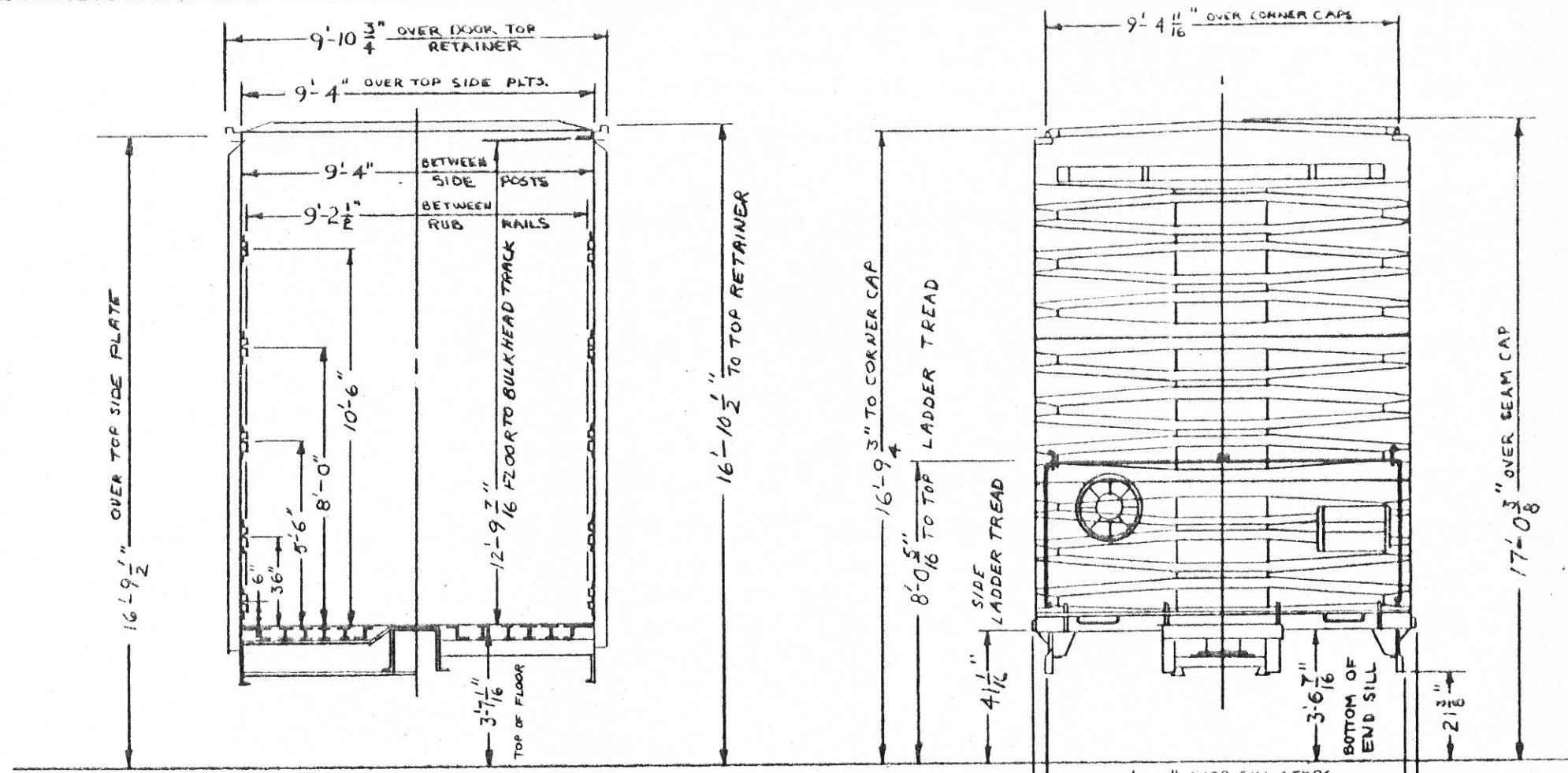


LESSOR		U.S. LEASING INTERNAL		LEASE 4267	TERM 3-24-85
GENERAL			DOOR AND FIXTURES: YOUNGSTOWN DOUBLE PLUS (ALUM)		
BUILDER: GREENVILLE STEEL CAR CO.			SIDE FRAME: A.A.R. CODE-F9C-05BN-UA BUCKEYE PATT. NO. F-1097		
YEAR BUILT: 1970			(D.T.&I. DWG. W-9679) A.A. IDENT. NO. B-5046 NARROW		
BUILDERS REF: O.O. 997-A			PEDESTAL		
A.A.R. CLASS: XL			SIDE FRAME WEAR PLATE: BOLT ON TYPE		
NO. BUILT: 29			(DWG.)		
CAPACITY: 10,000 CU.FT.			SPRINGS: A.A.R. D-5 14 OUTER, 10 INNER COILS PER TRUCK		
AVE. LTWT: 112,600 LBS.			TYPE OF TRUCK: BARBER S-2-C 6 1/2" x 12" STABILIZED		
AVE. LOAD LIMIT: 150,400 LBS.			EQUIPPED FOR TRUCK MOUNTED BRAKES, NARROW PEDESTAL		
			ROLLER BEARINGS		
			WHEELS: 36" 2 WEAR CAST STEEL CJ-36		
BODY			TRUCK		
AIR BRAKE MFG.: NEW YORK AIR BRAKE CO.			BOLSTER: A.A.R. CODE-B95-21EJ-BX BUCKEYE PATT. NO. B-10076		
AIR BRAKE SCHEDULE: ABD VALVE NYGOPAC B-3 B1" UNIT			(D.T.&I. DWG. V-9451) A.A.R. IDENT. NO. B-1921 (RB)		
(N 8982) A-1 REDUCTION RELAY VALVE			BOLSTER CENTER PLATE: HORIZONTAL WEAR PLATE (Z-8892)		
BODY CENTER PLATE & FILLER: INTEGRAL - BUCKEYE PATT. NO. 31-79X (D.T.&I. DWG. W-9678)			VERTICAL WEAR PLATE (Y-9450)		
BODY SIDE BEARING: PITT FORGE D-120B (D.T.&I. Z-9676)			BRAKE BEAM: NYAB N-8977 (INCLUDING PISTON)		
CENTER SILL: 2, Z-26 @ 51.25" FT. ASTM A-572-50			BRAKE SHOES: RERV-141		
CENTER SILL AREA: 30.12 SQ. IN.			GENERAL DWG: BEC C-10609-D (D.T.&I. X-9677)		
COMPARTMENT TIE RAILS: EVANS PRODUCTS DB-302124			JOURNAL: 6 1/2" x 12" ROLLER BEARINGS		
COUPLER: EIGHTEG BOTTOM OPERATED			JOURNAL BEARINGS: SKF 6 1/2" x 12" - 4B		
COUPLER CENTERING DEVICE: STANRAY 7C-22525-BZ (D.T.&I. V-9176)			SIDE BEARINGS: STUCKI GBR-B (D.T.&I. DWG. Z-5817)		
COUPLER RELEASE RIGGING: STANRAY 4U-21064-G (2)					
CROSSOVER STEPS: V.S. GYPSUM 6600B-P (D.T.&I. X-11155)					
CONDITIONING DEVICE: FREIGHTMASTER END-OF-CAR					
H11110-N (D.T.&I. W-9680) 9" TRAVEL IN BUFF, 1" TRAVEL DRAFT					
			CARS: 26650-26678		
			D. T. & I.		
			MECHANICAL ENGINEERING DEPT. 4-21-70		
			-- REVISIONS --		

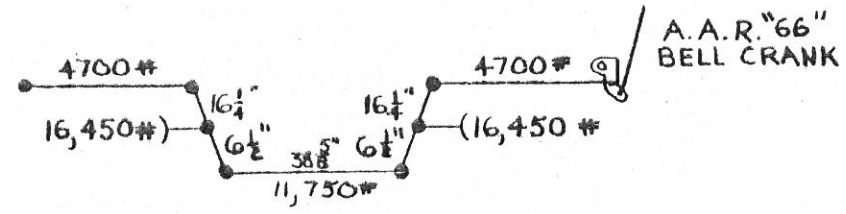


HAND BRAKE DIAGRAM

CARS: 26650-26678				
CLEARANCE DIAGRAM				
MECHANICAL ENGINEERING DEPT. 4-21-70				
- REVISIONS -				



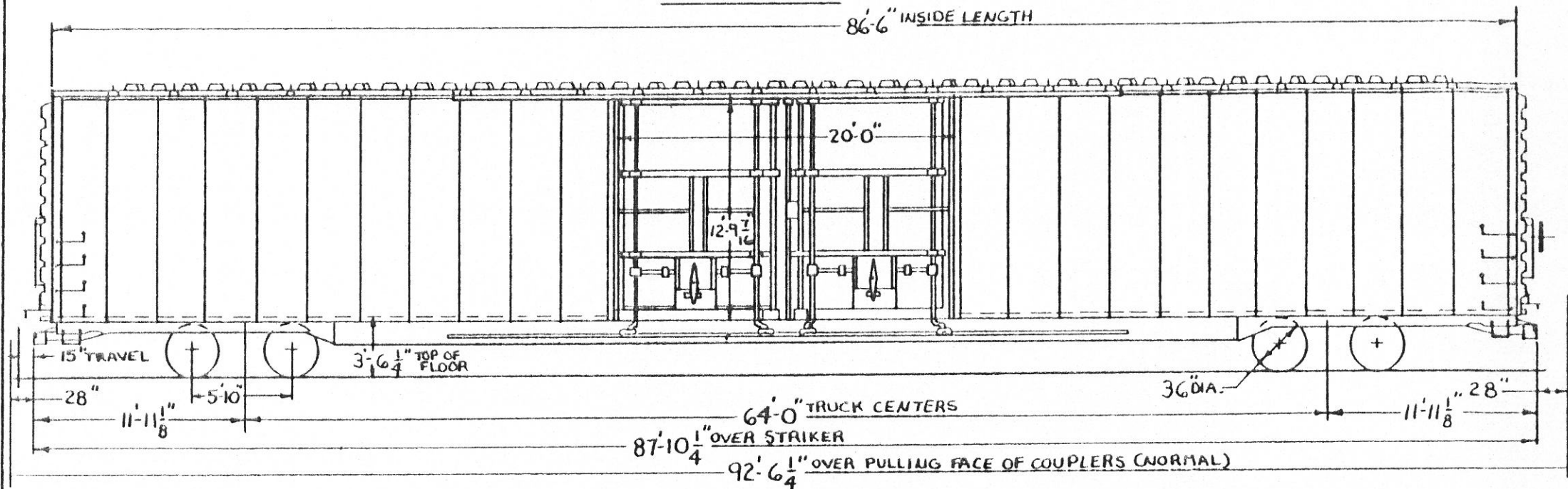
NOTE: THIS CAR EXCEEDS A.A.R. CLEARANCE LIMIT OUTLINES PLATES "B" & "C"



HAND BRAKE DIAGRAM

CARS: 26700-26736				
CLEARANCE DIAGRAM				
MECHANICAL ENGINEERING DEPT. 1-26-70				
— REVISIONS —				

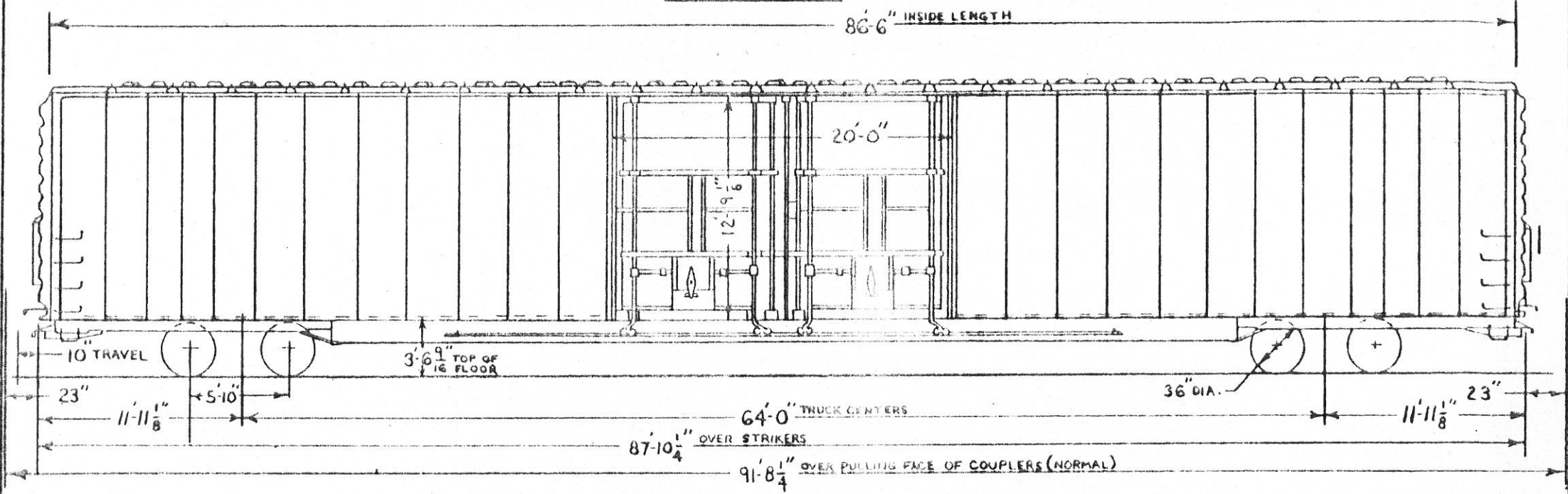
— 74 TON BOX —



LESSOR		C.I.T. LEASING CORP.	LEASE 4342	TERM 6-14-86
— GENERAL —				
BUILDER: GREENVILLE STEEL CAR CO.	DOOR AND FIXTURES: YOUNGSTOWN DOUBLE PLUG (ALUM.) DWG. V-10109 (OPENS FROM INSIDE OR OUTSIDE)	SIDE FRAME: A.A.R. CODE F9C-05BN-LA ASF PATT. NO. 22141-E		
YEAR BUILT: 1971	ENDS: STANRAY SE-19051-B (DT&I DWG. V-8789) TOP SHEET	DT&I DWG. W-10547, AAR IDENT. NO. 5017, NARROW PEDESTAL		
BUILDERS REF: 0.0.1015	5/32" INTERMEDIATE SHEET 3/16" BOTTOM SHEET 3/16"	SIDE FRAME WEAR PLATE: BOLT ON TYPE (DWG. X-9764)		
A.A.R. CLASS: XL	END SILL: 6" x 3 1/2" x 3/8" ANGLE ASTM A-36	SPRINGS: A.A.R. D-5, 14 OUTER, 12 INNER PER TRUCK		
NO. BUILT: 17	FLOOR: 1/4" PLATE TRI-TENASTHIA WITH ANTI-SKID PAINT	TYPE OF TRUCK: BARBER S-2-C 6 1/2" x 12" STABILIZED		
CAPACITY: 10,000 CU. FT.	GENERAL DWG: G6C 34546-A (DT&I DWG. V-10445)	EQUIPPED FOR TRUCK MOUNTED BRAKES		
AVE. LT. WT.: 115,000 LBS.	HAND BRAKE: ELLCON NATIONAL D-1600-2L (1966)	AND NARROW PEDESTAL ROLLER BEARINGS		
AVE. LOAD LIMIT: 148,000 LBS.	LINING: END - 3/16" STEEL PLATE ASTM A-569 (20% COPPER)	WHEELS: 36" ONE WEAR WROUGHT STEEL, H-36		
— BODY —				
AIR BRAKE MFG.: NEW YORK AIR BRAKE CO.	SIDE: 225/8" x 12 GA. ST. L X 10 1/2" H.T. & RUB RAILS - WEST. RY. DEV. (DWG. C-1673-Y)			
AIR BRAKE SCHEDULE: ABD VALVE NYCOPAC B-3.8 1/2"	ROOF: STANRAY 4R-19052-C (LINE 1) DT&I DWG. W-8790			
UNITS: A-1 REDUCTION RELAY VALVE	SIDE PLATE: 8" x 4" x 1/2" ANGLE ASTM A-36			
BODY CENTER PLATE & FILLER: INTEGRAL BUCKEYE PATT. NO. 31-79-X (DT&I DWG. W-9678)	SIDE SILL: 3 1/2" x 3 1/2" x 3/8" ANGLE ASTM A-36			
BODY SIDE BEARING: STUCKI #791 (DT&I DWG. Z-9676)	SIDE SILL REINF.: 15" @ 33.9" FT. & 10" @ 24.9" FT. CHANNEL			
CENTER SILL: 2, Z 26 @ 51.2" FT. ASTM A-572 GR. 60 TYPE 2	— TRUCK —			
CENTER SILL AREA: 30.12 SQ. IN.	BOLSTER: A.A.R. CODE-B9S-214N-DX ASF PATT. NO. 22257-KN			
COMPARTMENTIZERS: EVANS PRODUCTS DB-302249	DT&I DWG. W-10546 AAR IDENT. NO. 2047 (RB)			
COUPLER: E69 HTEC BOTTOM OPERATED	BOLSTER CENTER PLATE: HORIZONTAL WEAR PLATE Z-8692	CARS: 26750-26766		
COUPLER CENTERING DEVICE: STANRAY C-22525-C (V-9710)	VERTICAL WEAR PLATE - Y-9450			
COUPLER RELEASE RIGGING: STANRAY 4U-21064 H (W-8784)	BRAKE BEAM: NYA B. 4-8777 (INCLUDING PISTON)			
CROSSOVER STEP: U.S. GYPSUM G6005-P (DT&I X-11145)	BRAKE SHOES: R.F.P. Y-141 (COMPOSITION)			
CUSHIONING DEVICE: KEYSTONE END-OF-CAR TYPE	GENERAL DWG: ASF 74728 - (DT&I W-10548)			
F9C-15-LR 15" TRAVEL IN BUFF, 0" TRAVEL IN BUFF	JOURNALS: 6 1/2" x 12" ROLLER BEARINGS			
	JOURNAL BEARINGS: TIMKEN 6 1/2" x 12" 1-A			
	SIDE BEARINGS: STUCKI 688-B (DWG. Z-5817)			
— REVISIONS —				

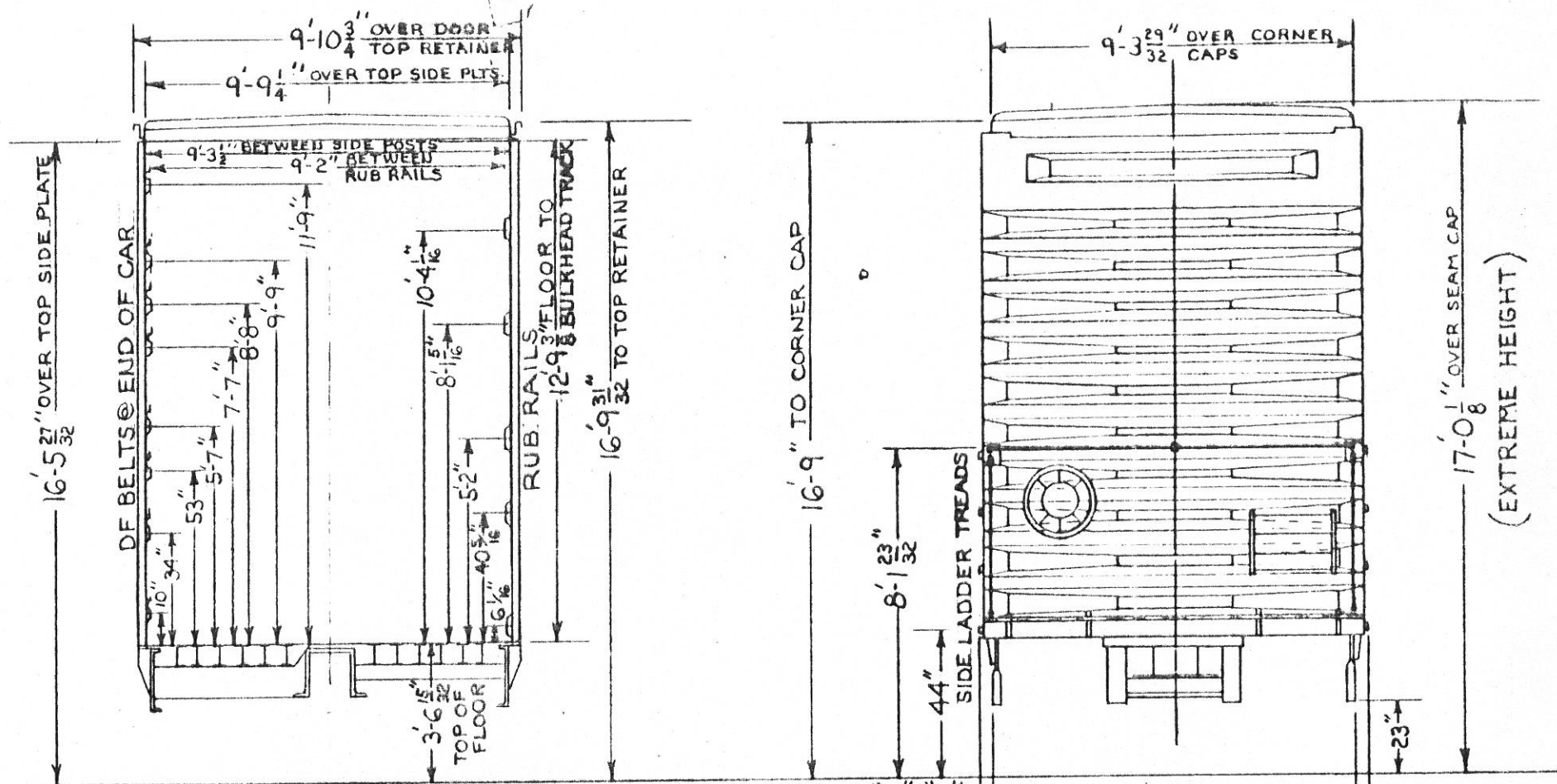
D. T. & I.
MECHANICAL ENGINEERING DEPT. DEC. 20, 1971

74 TON BOX CAR

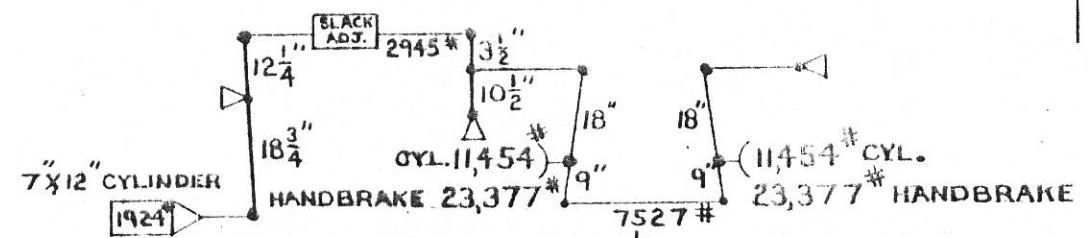


RANDOM CARS		LESSOR	U.S. LEASING INTERNAL	LEASE: 4267	TERM: 3-24-85
		LESSOR	U.S. LEASING INTERNAL	LEASE: 4278	TERM: 7-1-85
— GENERAL —		87.14120-N (D.T.&I. DWG. W-9680) 9" TRAVEL IN BUFF, 1" TRAVEL DRAFT		SIDE BEARINGS: STUCKI 688-B (D.T.&I. DWG. Z-5817)	
BUILDER: GREENVILLE STEEL CAR CO.		DOOR AND FIXTURES: YOUNGSTOWN DOUBLE PLUG (ALUM)		SIDE FRAME: AAR CODE-F9C-05BN-UA BUCKEYE PATT. NO.	
YEAR BUILT: 1970		OPENS FROM INSIDE OR OUTSIDE (D.W.G. V-10067)		F-1097 (D.T.&I. DWG. W-9679) A.A. IDENT. NO. B-5048	
BUILDER'S REF: 997		ENDS: STANRAY EE-19051-B (D.T.&I. DWG. V-8789) TOP SHEET 3/32"		NARROW PEDESTAL	
A.A.R. CLASS: XL		INTERSHEET 3/16" BOTTOM SHEET 3/16"		SIDE FRAME WEAR PLATE: BOLT ON TYPE (D.W.G. X-9784)	
NO. BUILT: 54		END SILL: 6" x 3 1/2" x 7/8" ANGLE		SPRINGS: A.A.R. D-5 14 OUTER 10 INNER COILS PER	
CAPACITY: 10,000 CU.FT.		FLOOR: 1/4" PLATE ASTM A-441 STEEL ANTI-SKID PAINT		TRUCK, TYPE OF TRUCK: BARBER S-2-C 62" x 12"	
AVE. LT. WT: 113,800 LBS.		GENERAL DWG.: GSC 3410B- (D.T.&I. DWG. V-10090)		STABILIZED EQUIPPED FOR TRUCK MOUNTED	
AVE. LOAD LIMIT: 147,200 LBS.		HAND BRAKE: ELLCON-NATIONAL D-1800-2 (1968)		BRAKES, NARROW PEDESTAL ROLLER BEARINGS	
		LINING: END 3/16" STEEL PLATE ASTM A-569		WHEELS: 36" 2 WEAR CAST STEEL CJ-36	
— BODY —		SIDE-RUBRAILS: WESTERN RY DEVICES (D.W.G. C-1872-V)			
AIR BRAKE MFG.: NEW YORK AIR BRAKE CO.		ROOF: STANRAY 4R-19052-C (LINE 1) (D.T.&I. DWG. V-8790)			
AIR BRAKE SCHEDULE: AED VALVE NYGPAC 8-3 8 1/2" UNIT		SIDE PLATE: 8" x 4" x 1/2" ANGLE			
(N-8182) A-1 REDUCTION RELAY VALVE		SIDE SILL: 3 1/2" x 3 1/2" x 7/8" ANGLE			
BODY CENTER PLATE: INTERFERAL-BUCKEYE PATT. NO. 31-79X (D.T.&I. DWG. W-9678)		SIDE SILL REINFORCEMENT: 15" @ 33.9" FT. AND 10" @ 24.9" FT.			
BODY SIDE BEARING: PITZ FORGE D-1208 (D.T.&I. Z-9678)		CHANNELS ASTM A-572-50 STEEL			
CENTER SILL: 2, 2-26 @ 51.2 1/2" ASTM A-572-50		— TRUCK —			
CENTER SILL AREA: 30.12 SQ. IN.		BOLSTER: AAR CODE-B95-21EJ-BX BUCKEYE PATT. NO. —		CARS: 26800-26853	
COMPARTMENTIZERS: EVANS PRODUCTS DB-30223G		B-10076 (D.T.&I. DWG. V-9451) A.A.R. IDENT. NO. B-1921 (R)			
COUPLER: EQUITER-BOTTOM OPERATOR		BOLSTER CENTER PLATE: HORIZONTAL WEAR PLATE (Z-8693)		D.T.&I.	
COUPLER CENTERING DEVICE: STANRAY 7C-28525-B (V-9170)		VERTICAL WEAR PLATE (Y-9450)			
COUPLER RELEASE RIGGING: STANRAY 4U-21064-6 (2)		BRAKE BEAM: NYAR N-8977 (INCLUDING PISTON)		MECHANICAL ENGINEERING DEPT.	
CROSSBAR: EVANS PRODUCTS I DF-204564		BRAKE SHOES: R.F.P.V.-141		- REVISIONS -	
CROSSOVER STEP: U.S. GYPSUM 66006-P (D.T.&I. DWG. X-1145)		GENERAL DWG.: BSC C-10809-D (D.T.&I. X-9677)			
CUSHIONING DEVICE: FREIGHTMASTER, END-OF-CAR —		JOURNALS: 6 1/2" x 12" ROLLER BEARINGS			
		JOURNAL BEARINGS: SKF 6 1/2" x 12" -4B			

4-28-70

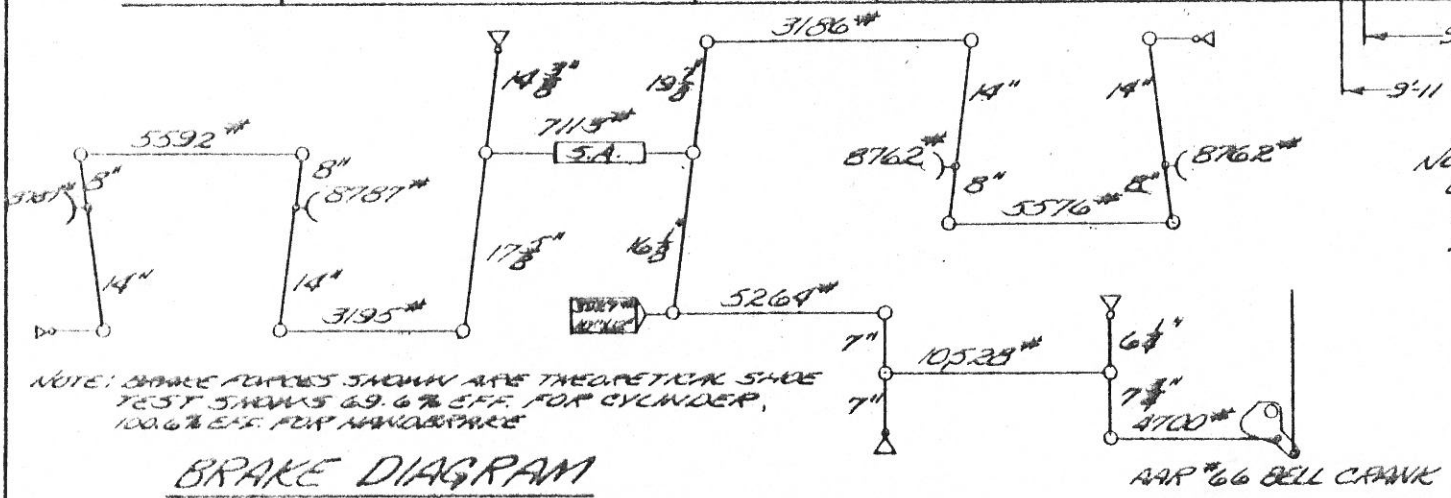
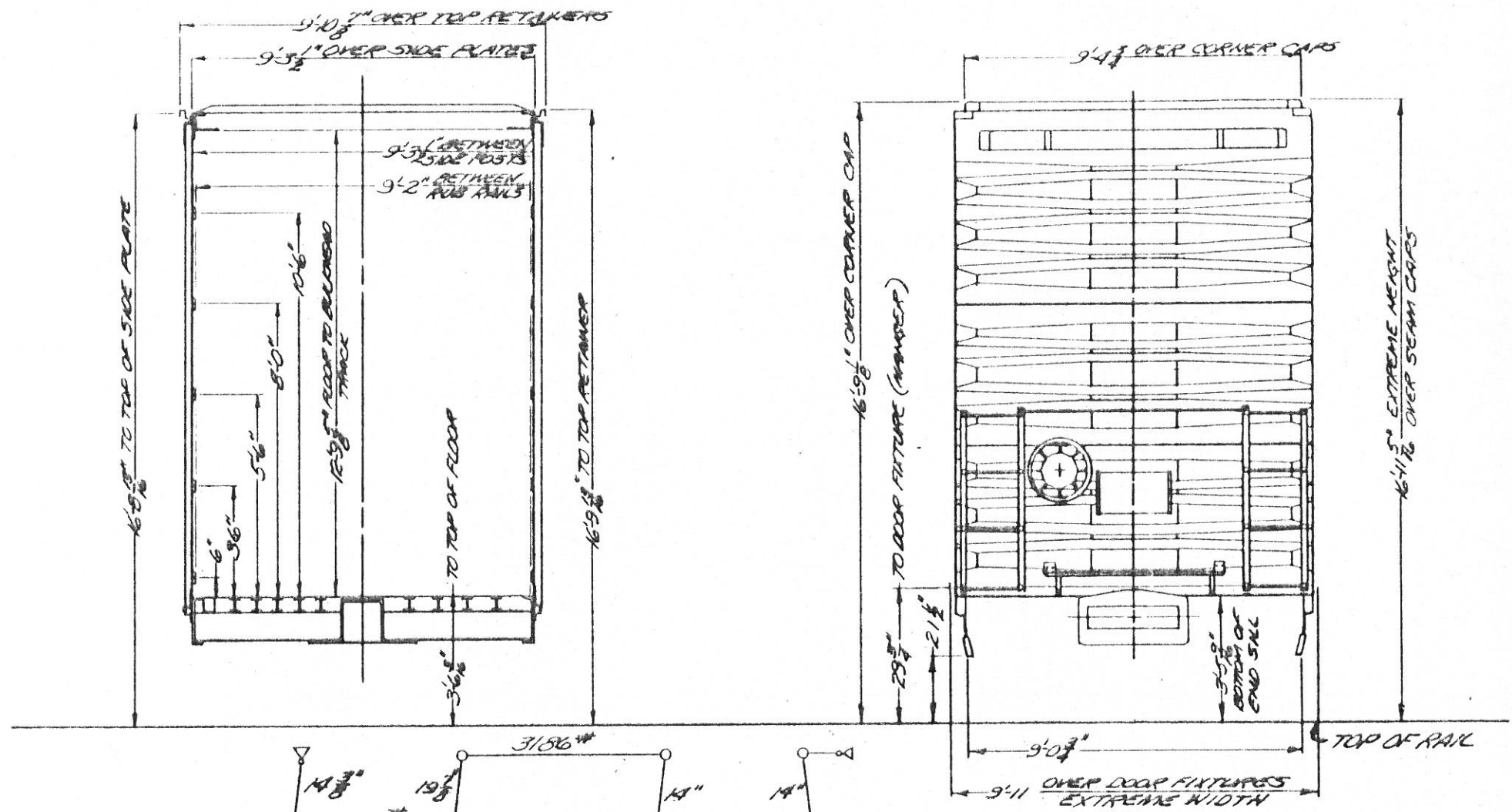


NOTE: THIS CAR EXCEEDS A.A.R. CLEARANCE OUTLINE PLATES "B" & "C"



BRAKE DIAGRAM FOR 1/2 OF CAR

CARS: 26886-26899	
CLEARANCE DIAGRAM	
MECHANICAL ENGINEERING DEPT.	9-9-70
~ REVISIONS ~	



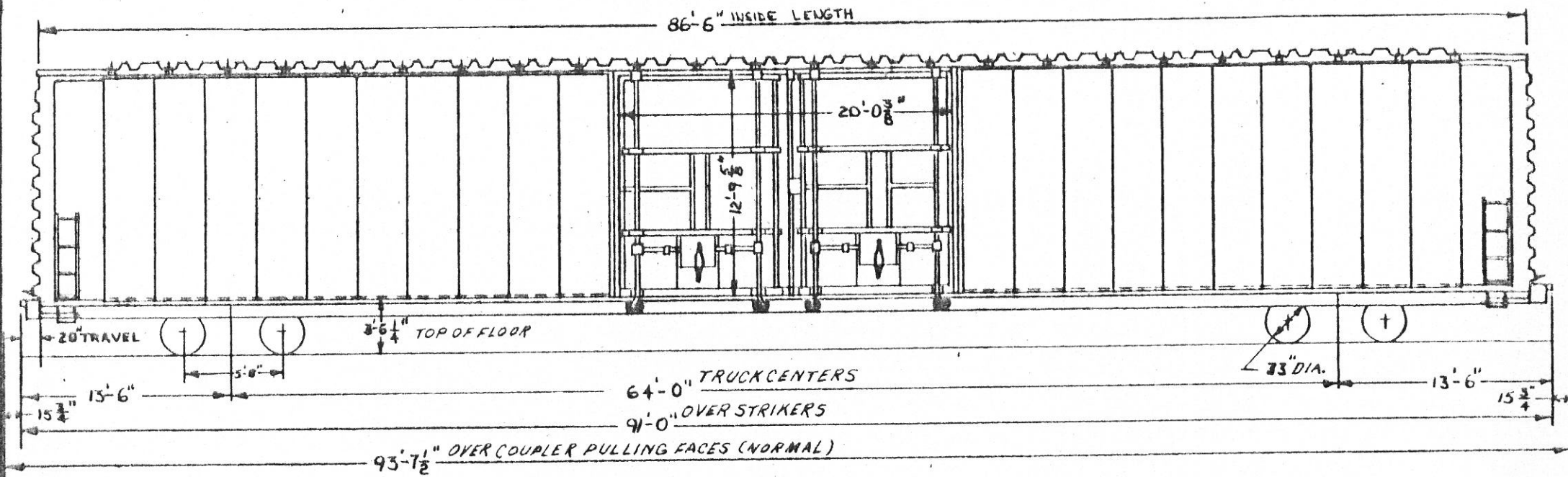
NOTE: THIS CAR EXCEEDS AAR CLEARANCE LIMIT OUTLINES PLATES 18" x 6"
 THIS CAR EQUIPPED WITH STANDARD BOX CAR SAFETY APPLIANCES.

BOX: 27000-27134	
CLEARANCE DIAGRAM	
MECHANICAL ENGINEERING DEPT.	5-13-74
REVISIONS	

NOTE: CHAMF ANGLES SHOWN ARE THEORETICAL SINCE TEST SHOWS 69.6% EFF. FOR CYLINDER, 100.6% EFF. FOR HANDSPACE

BRAKE DIAGRAM

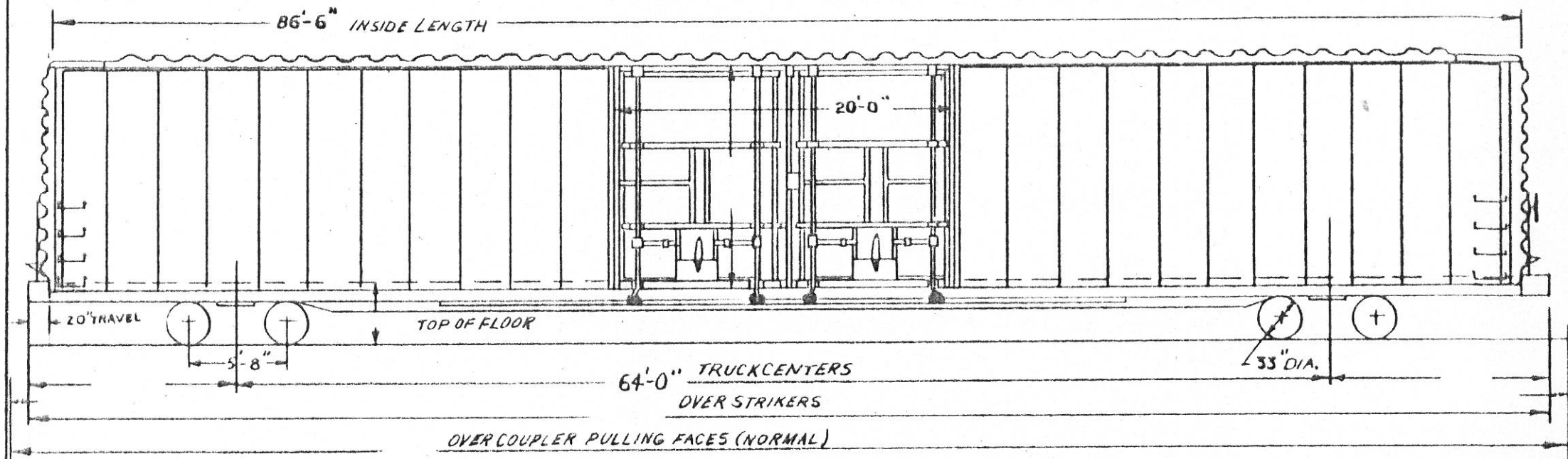
— 50 TON BOX —



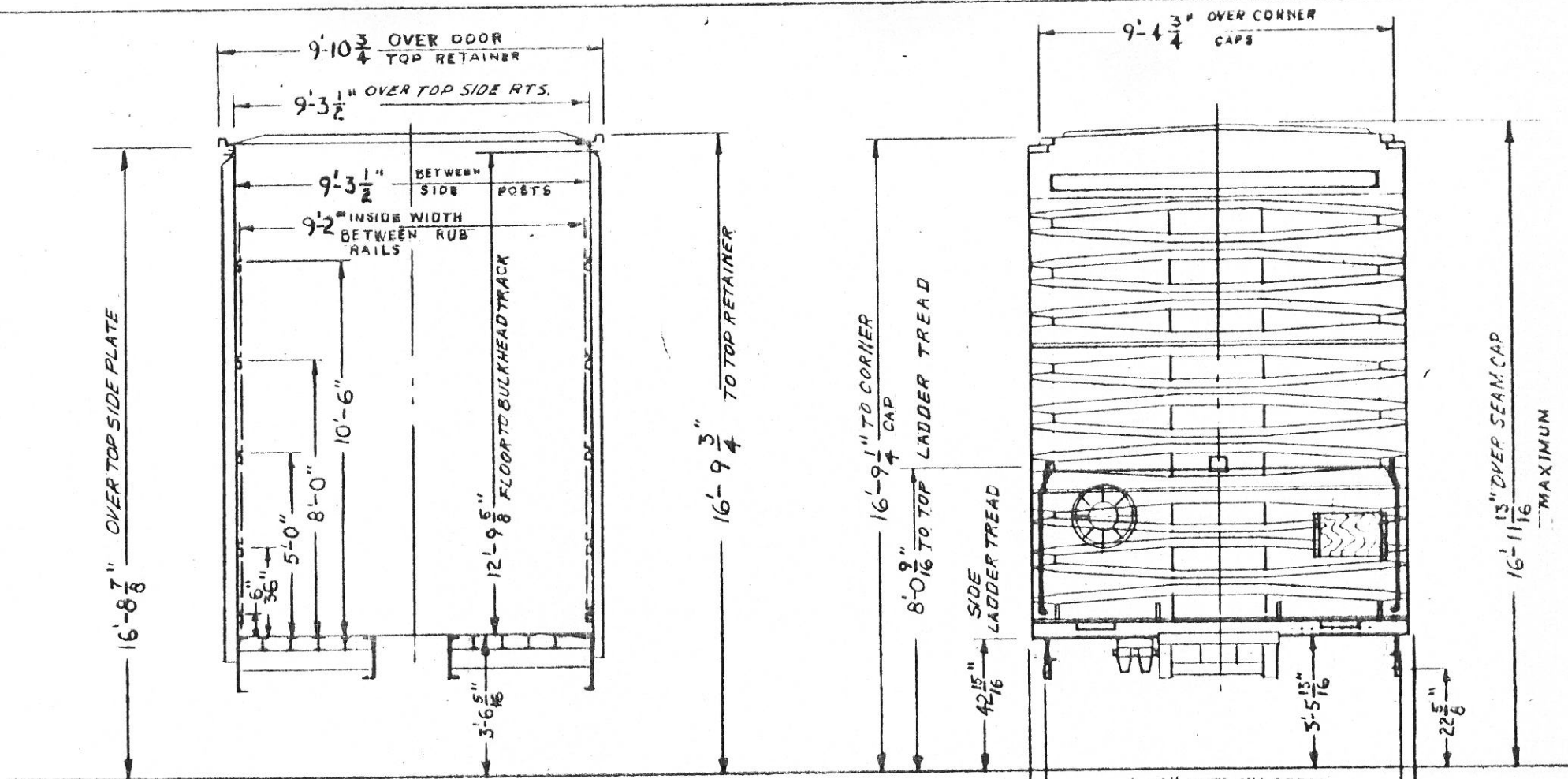
LESSOR U.S. RY. LEASING CORP. LEASE 4181 TERM. 2-5-84

— GENERAL —		CUSHIONING DEVICE: KEYSTONE (20" TRAVEL)	BRAKE BEAM: WAB UNIT 562947 (INCLUDING PISTON)
BUILDER: THRALL CAR MFG. CO.		DOORS & FIXTURES: YOUNGSTOWN	BRAKE SHOES: R.F.P. V-141
YEAR BUILT: 1964		DRAFT GEAR:	GENERAL DWG.:
BUILDERS REF.: 170-G		DRAFT GEAR ATTACHMENTS:	JOURNALS: 6"X11" ROLLER BEARING
A.A.R. CLASS: XL		ENDS: STANRAY 5E-18282-F TOP SHEET 5/32"	JOURNAL BEARINGS: TIMKEN 6"X11" 1
NO. BUILT: 3 (ORIGINALLY G.B.W. 100-102)		INTERMEDIATE SHEET 3/16"	SIDE BEARINGS:
CAPACITY: 10,000 CU. FT.		BOTTOM SHEET 3/16"	SIDE FRAME: A.A.R. CODE F75-02BN-UA NAT'L CASTINGS
AVE. LT. WT.: 112,700 LBS.		END SILL: 6"X3 1/2"X5/16" ANGLE	PAT. NO. 43931-4 (D.T. DWG. V-8098) A.A.R.
AVE. LOAD LIMIT: 107,300 LBS.		FLOOR: 3/16" PLATE WITH ANTI-SKID COATING	IDENT. NO. B-943
— BODY —		GENERAL DWG: THRALL B-1820-G	SPRINGS: A.A.R. D-3 10 OUTER, 10 INNER COILS PER TRUCK
AIR BRAKE MFG:		HAND BRAKE: MINER D-3290-XL	TYPE OF TRUCK: BARBER 5-2-A 6"X11" STABILIZED
AIR BRAKE SCHEDULE: AB, WABCO PAC B-3 7/8" UNITS		LINING: END - 3/16" PLATE	NARROW PEDESTAL ROLLER BEARING
NO. 8 VENT VALVE		SIDE - RUB RAILS WEST. RY. EQUIP. CO.	3 TRUCK MOUNTED BRAKES
BODY CENTER PLATE: 13 1/4" CAST STEEL		ROOF: STANRAY 7R-18284-D	WHEELS: 33" 1 WEAR WROUGHT STEEL J-33
WAUGH PAT. C6-4335		SIDE BEARING CENTERS: 4'-2"	
BODY SIDE BEARING:		SIDE PLATE: 5"X5"X1/2" ANGLE	
CENTER SILL: SLIDING: 3, @ 26 @ 41.2"/FT. EX-TEN 50		SIDE SHEETING: 1/4" SHT. @ CORNER & DOOR POSTS	
STATIONARY: 18 @ 36"/FT. CHANNEL HTLA		.10" SHT. - INTERMEDIATE SHEETS	
CENTER SILL AREA: SLIDING: 24.24 SQ. IN.		SIDE SILL: 3" @ 6.7"/FT. ZEE	
STATIONARY: 20.48 SQ. IN.		SIDE SILL REINFORCEMENT: 15" @ 33.9"/FT. CHANNEL	
COMPARTMENTIZER: EQUIPCO 221-H-14718			
COUPLER HEIGHT: 60" FROM PULLING FACE TO PIN HOLE		— TRUCK —	
COUPLER RELEASE (KING'S) STANRAY 4U-18339-D		BOLSTER: A.A.R. CODE: PAT. NO.	
(LINE 1)		(D.T. DWG.) A.A.R. IDENT. NO.	
CROSSOVER STEP: APEX			
			CARS: 69000 & 69012
			D.T. & I. RAILROAD
			MECHANICAL ENGINEERING DEPT. 11-11-69
			— REVISION —

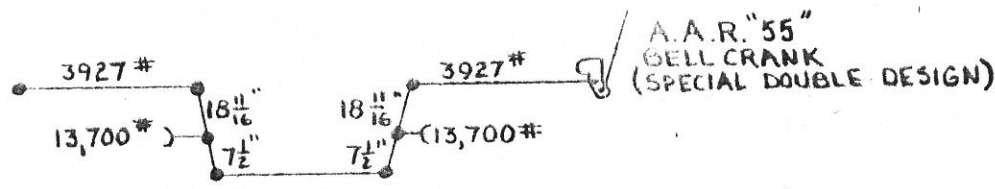
- 50 TON BOX -



LESSOR		U.S. RY. LEASING CORP.	LEASE 4181	TERM 2-5-84
~ GENERAL ~		DOOR AND FIXTURES: YOUNGSTOWN DOUBLE PLUG (ALUM.)	JOURNALS: 6"X11" ROLLER BEARINGS	
BUILDER: GREENVILLE STEEL CAR	YOUNGSTOWN DWG:	JOURNAL BEARING: BRENCO 6"X11" 5-A		
YEAR BUILT: 1963	DRAFT GEAR:	SIDE BEARINGS:		
BUILDERS REP: O.O. BGI	DRAFT GEAR ATTMTS:	SIDE FRAMES: A.A.R. CODE		
ARR CLASS: XL	ENDS: STANRAY 5E-19050-D (D.T. DWG. V-8788)	SPRINGS: A.A.R. D-3		
NO BUILT: 3 (ORIGINALLY GBW 103-108)	BND SILL: 6"X3 1/2"X 1/2" ANGLE (DWG. Y-7490)	TYPE OF TRUCK: BARBER S-2-A, 6"X11" STABILIZED NARROW		
CAPACITY: 10,000 CU. FT.	FLOOR:	PEDESTAL ROLLER BEARINGS TRUCK		
AVG. LT. WT: 115,000 LBS.	GENERAL DRAWING:	MOUNTED BRAKES		
AVG. LD. LIMIT: 105,000 LBS.	HAND BRAKE:	WHEELS: 33" WEAR WROUGHT STEEL J-33		
~ BODY ~		LINING: ENB-5/16" STEEL PLT. (DWG. Y-7486)		
AIR BRAKE MFG:	SIDE - RUB RAILS			
AIR BRAKE SCHEDULE: ADD VALVE W/NO COP. C-6-3, 7 1/2" UNITS, A-1 REDUCTION RELAX VALVE	ROOF: STANRAY 4R-19093-A (D.T. DWG. W-8790)			
BODY CENTER PLY: 13/32" CAST STEEL, WAUGH CG-4338	SIDE BEARING CYRS: 4'-2"			
BODY SIDE BEARING:	SIDE SILL:			
CENTER SILL:	SIDE PLATE:			
	SIDE SHEATHING:			
CENTER SILL AREA:	~ TRUCK ~		CARS: 69001, 002 AND 69007	
COMPARTMENTIZER: EVANS DB-500192	BOLSTER: A.A.R. CODE	D.T. & I. RAILROAD		
COUPLER:		MECHANICAL ENGINEERING DEPT 10-27-69		
COUPLER RELEASE RIGGING: STANRAY 4U-18695-G (LINE 2) (D.T. DWG. V-8111)	BRAKE BEAM:	- REVISION -		
CROSS OVER STEP:	BRAKE SHOES: 1 1/2" HIGH FRICTION COMPOSITION			
CUSHIONING DEVICE: DRESSER "HYDRA-CUSHION" CG-3546 TYPE II (20" TRAVEL)	GENERAL DWG:			



NOTE: THIS CAR EXCEEDS A.A.R. CLEARANCE LIMIT OUTLINES PLATES "B" & "C"



HAND BRAKE DIAGRAM

CARS: 69003, 04, 05, 06, 08, 09, 10, 11				
CLEARANCE DIAGRAM				
MECHANICAL ENGINEERING DEPT 12-3-69				
- REVISIONS -				